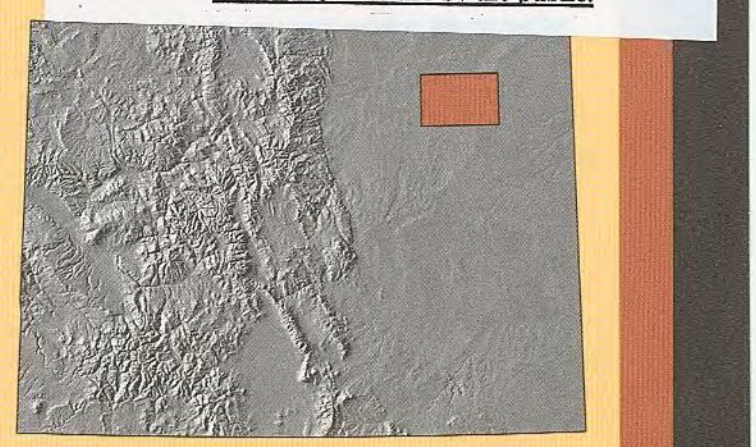


CORRECTION NOTICE FOR FORT MORGAN 1:100K LANDOWNERSHIP MAP August 28, 2008 In Township 3 North, Range 56 W, the dark blue area 2 miles southwest of Brush, marked "Bollinger State Habitat Area" is privately owned land, with a lease held by the Colorado Division of Wildlife. It is not open to the public.



Surface Management Status 1:100,000-Scale Topographic Map

2008 U.S. DEPARTMENT OF THE INTERIOR BUREAU OF LAND MANAGEMENT

Edited and published by the Bureau of Land Management National Operations Center in cooperation with the Bureau of Land Management Colorado State Office. Primary data partially revised by Bureau of Land Management from various source materials. Revised information not field checked.

Public Land Survey System derived from the Bureau of Land Management Geographic Coordinate Data Base. Land status and other source information compiled by Bureau of Land Management. Hypsography, Hydrography, Boundary, and Transportation data derived from U.S. Geological Survey 1:100,000 scale digital line graphs. Digital line graphs based on 1:100,000 scale quadrangle map dated 1980.

Lambert Conformal Conic Projection North American Datum 1983 National Geodetic Vertical Datum of 1929

There may be private inholdings within the boundaries of the National or State reservations shown on this map. Land lines are omitted in areas of extensive tract surveys.

THIS MAP COMPLIES WITH NATIONAL MAP ACCURACY STANDARDS In general, BLM Public Lands are open to a number of recreational activities in addition to those that may be highlighted on the map. These activities include camping, fishing, hiking, and hunting. Certain restrictions may apply. Contact appropriate BLM State, District, or Field Office for more information.

CONVERSION TABLE (METERS vs FEET), DECLINATION DIAGRAM (MAGNETIC vs TRUE), and ADJOINING MAPS (listing nearby map sheets).

FOR SALE BY THE U.S. DEPARTMENT OF THE INTERIOR BUREAU OF LAND MANAGEMENT COLORADO STATE OFFICE LAKEWOOD, CO 80225 U.S. GEOLOGICAL SURVEY DENVER, CO 80225

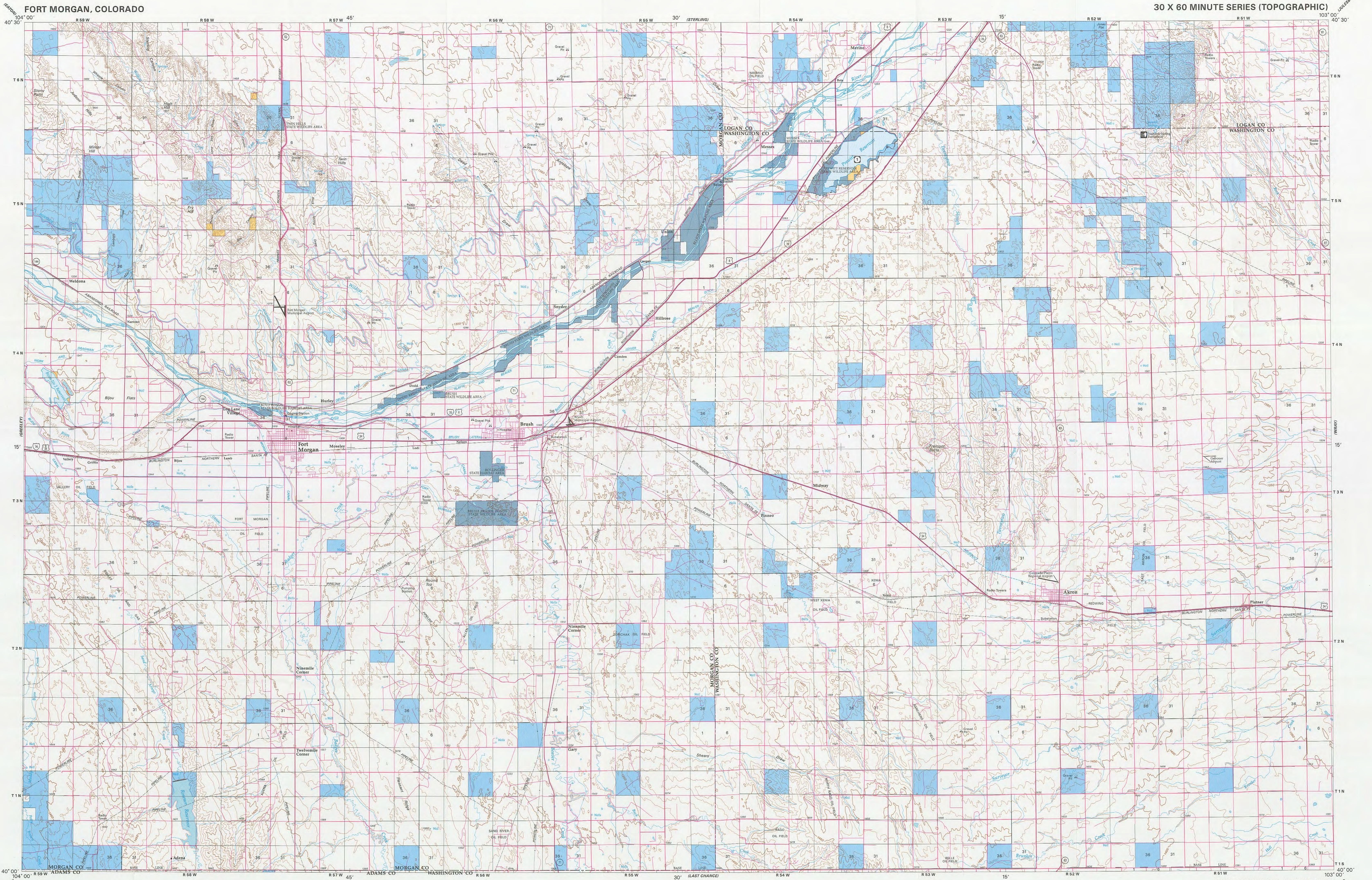


TOPOGRAPHIC MAP SYMBOLS

Legend for topographic map symbols including roads, railways, bridges, airports, boundaries, and land status symbols.

NOTE TO MAP USERS The surface and mineral management status overlays are published as general planning and management tools. Some of the lands, surface and mineral rights, may have been shown as patented lands due to the lack of information available to BLM with respect to the nature of acquisition. No warranty is made by the BLM for use of the map for purposes not intended by BLM. The official land records in the respective offices of the Bureau of Land Management or other responsible Federal agencies should be checked for up-to-date status on any specific tract of land. Inadequacies in the BLM maps should be reported to the respective Bureau of Land Management office from which the maps were obtained.

PUBLIC ACCESS Roads crossing public lands may be traveled by the public unless closed by signing or notice by the land management agency. Public lands traversed by private lands may not have public access. Permission is required from the private landowner to cross private land, unless access is provided by a Federal, State, or County road, or a BLM road with legal access.



RECREATIONAL SYMBOL LEGEND listing symbols for Campground, Hunting, Boat Ramp, Restrooms, Historic Site, etc.

RECREATION SITES, TRAILS AND AREAS LEGEND listing symbols for various recreation sites and trails.

LAND STATUS LEGEND listing various land status categories such as National Forest, National Wildlife Refuge, etc.

BANKHEAD-JONES LAND USE LEGEND listing various land use designations like National Grasslands, Military Reservations, etc.

OREGON & CALIFORNIA LAND (O&C) LEGEND listing various O&C land categories like Coos Bay Wagon Road, etc.

SPECIAL SYMBOL LEGEND listing symbols for Route/Trail Markers, Bureau of Land Management, Forest Service, etc.

TOWNSHIP DIAGRAM and INDEX TO 1:24,000-SCALE MAPS showing township and range grids and corresponding map sheet numbers.