

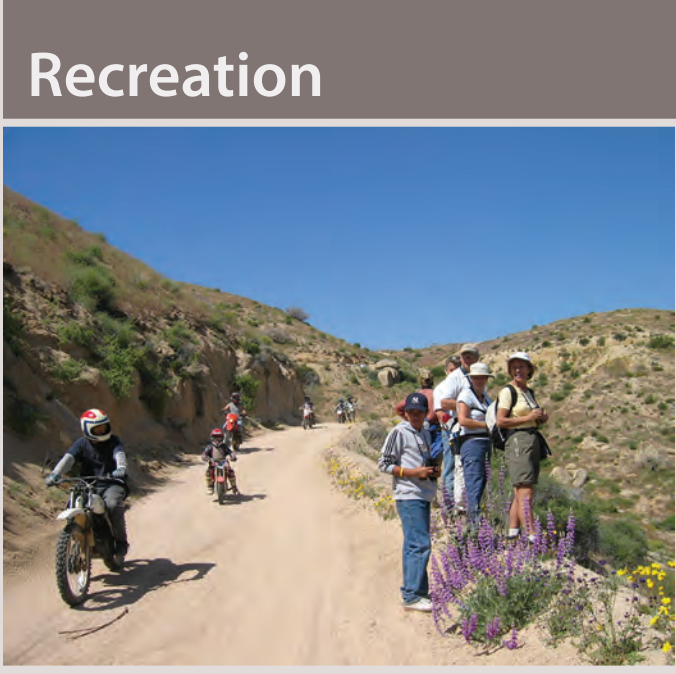


Juniper Flats is a shotgun only area (per San Bernardino County ordinance); no night shooting or recreational target shooting with rifles or handguns is allowed. In the immediate vicinity of wildlife waterers and guzzlers, hunting is limited to 30 minutes. It is illegal to shoot within 150 feet of any campsite or to shoot at trees, signs, glass bottles, domestic livestock, outbuildings, or other objects on federal land. On private land, visitors must obtain permission from the landowner to discharge firearms. Check with the California Department of Fish and Wildlife for current hunting regulations and seasonal limits.

Hunting and Shooting

Dispersed camping and parking are allowed in areas that show obvious signs of prior use and lack of vegetation cover, that are within 300 feet of a designated open route, and that are at least 200 yards from wildlife watering places. Camping in any one location is limited to 14 days. Please obtain permission before entering private land. Fire permits are required and may be restricted in the fire season (May – October). Fire danger is extreme during most of the year.

Camping and Picnicking



Visitors to Juniper Flats enjoy excellent recreation opportunities, including camping, hiking, backpacking, horseback riding, mountain biking, and hunting. Off-highway vehicle (OHV) touring is restricted to a designated route system (see numbered routes on included maps). Routes not marked as open are CLOSED to all motorized vehicles. "Technical" or cross-country (off-route) OHV activities are not allowed in Juniper Flats; please use the nearby El Mirage, Johnson Valley, or Stoddard Valley OHV areas. Juniper Flats is part of a public trail network that connects the San Bernardino National Forest with Victor Valley OHV areas to the northwest.

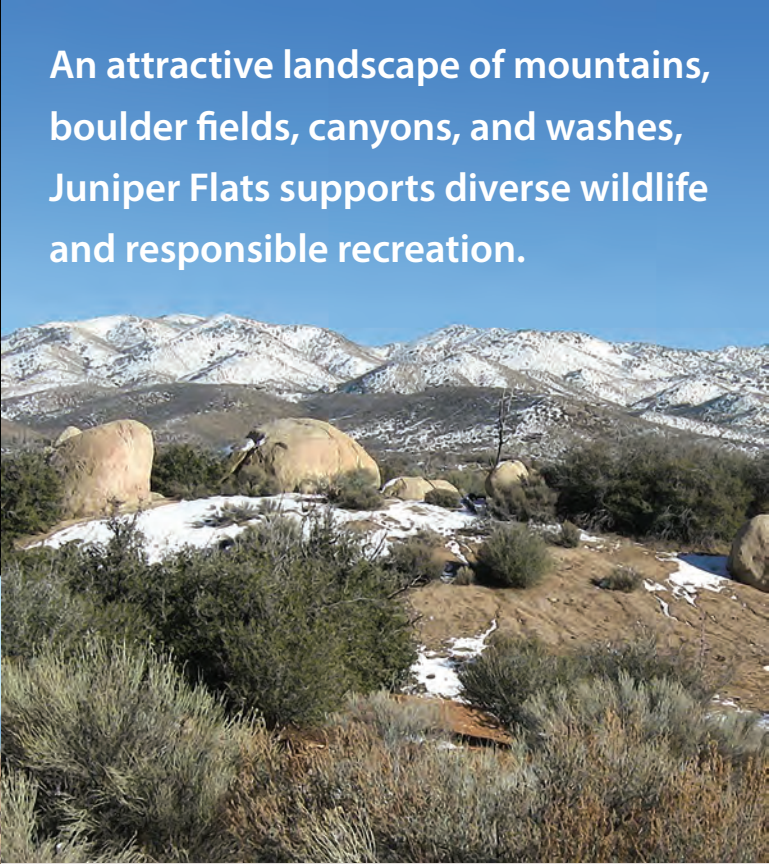
Recreation

Transitional areas between ecosystems typically support and attract a greater number of plant and animal species. Among the many mammals sighted at Juniper Flats are mountain lion, bobcat, coyote, kit fox, white-tailed antelope squirrel, black-tailed jackrabbit, California ground squirrel, Botta's pocket gopher, the kangaroo rat, and Merriam's chipmunk.

Many birds also call Juniper Flats home, including the red-tailed hawk, Cooper's hawk, prairie falcon, golden eagle, American kestrel, greater roadrunner, loggerhead shrike, LeConte's thrasher, Least Bell's vireo, western scrub jay, great horned owl, barn owl, and burrowing owl. Visitors may also encounter a variety of insects and amphibians near water sources, as well as rattlesnakes, such as the Southern Pacific rattlesnake, throughout Juniper Flats.

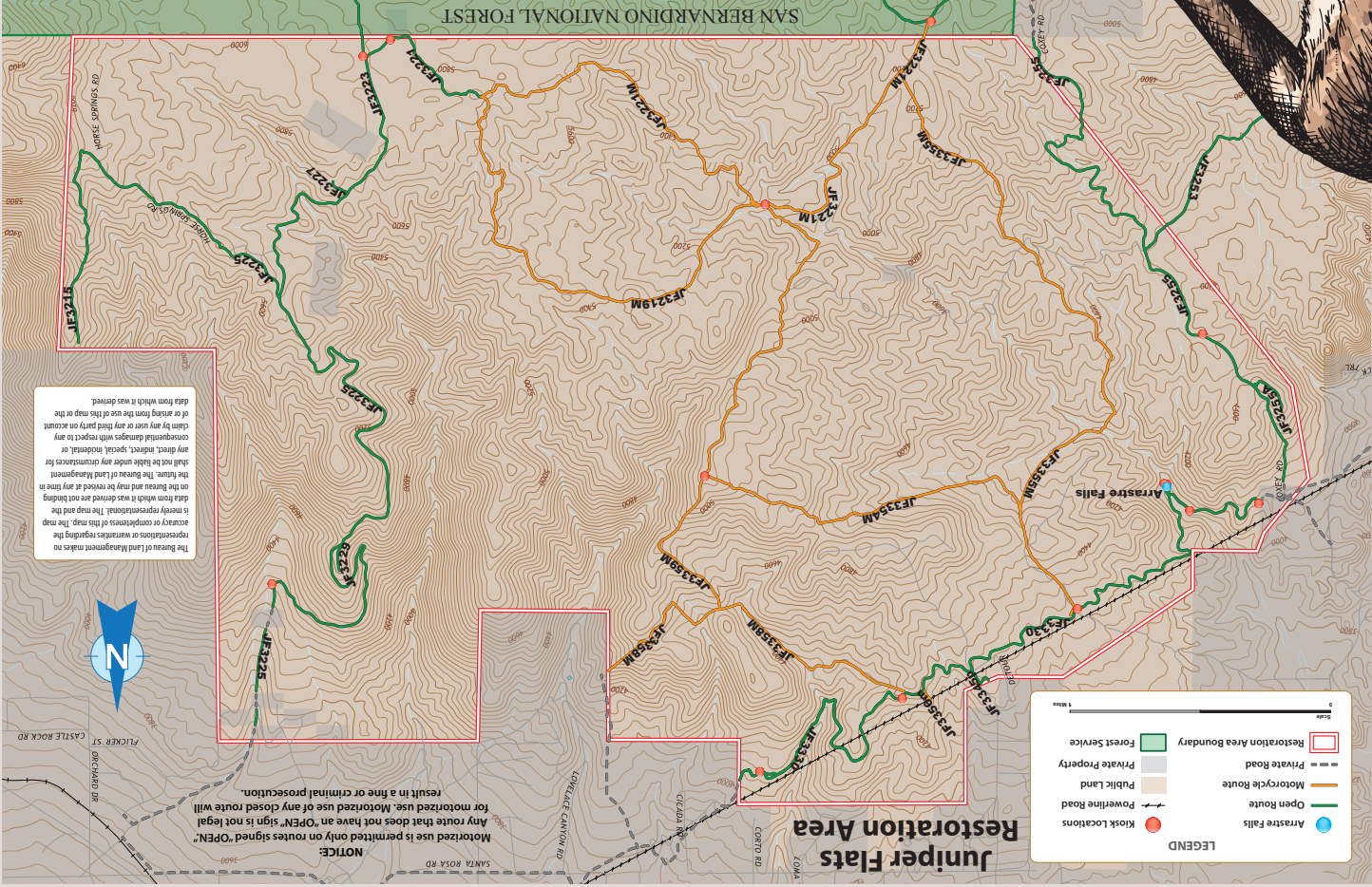
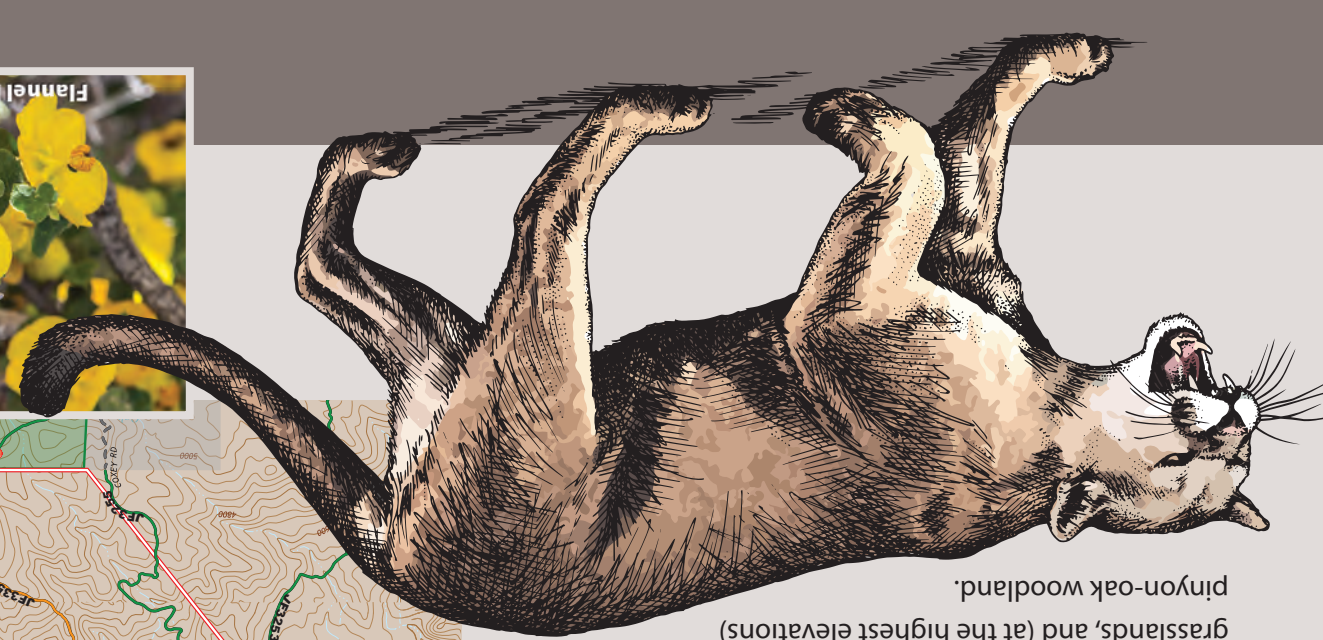
Flora communities include the Mojave Desert creosote scrub, the Joshua tree woodland, cottonwood and willow riparian woodland, juniper woodland, grasslands, and (at the highest elevations) pinyon-oak woodland.

Flora and Fauna



An attractive landscape of mountains, boulder fields, canyons, and washes, Juniper Flats supports diverse wildlife and responsible recreation.

Juniper Flats covers 101,272 acres of mixed public and private lands. Located between the Mojave Desert and the forests of the San Bernardino Mountains, Juniper Flats hosts a unique mixture of plants from both environments. Its streams and wetlands attract many kinds of wildlife. No less amazing are the beautiful views and varied landscape that make Juniper Flats a favorite recreation destination year-round.



Off-route recreation travel through wildlands seriously damages the environment and cultural resources. It takes only one tire tread to crush a nest or destroy fragile evidence of the past! Please stay on trails marked OPEN. Be especially careful in the part of Juniper Flats designated an Area of Critical Environmental Concern. See map on other side.

Extensive restoration has already been accomplished (see the red-bordered area in the map below), but protecting this unique environment, and community institutions Residents, local government, and community institutions can all help ensure that the natural and cultural resources of Juniper Flats are enjoyed for generations to come. For more information about how you can help, contact the Bureau of Land Management, Barstow Field Office, at (760) 252-6000.

For more information, contact:

BUREAU OF LAND MANAGEMENT
 Barstow Field Office
 2601 Barstow Road
 Barstow, CA 92311
 (760) 252-6000

Public lands in Juniper Flats are managed by the Bureau of Land Management.

Bureau of Land Management

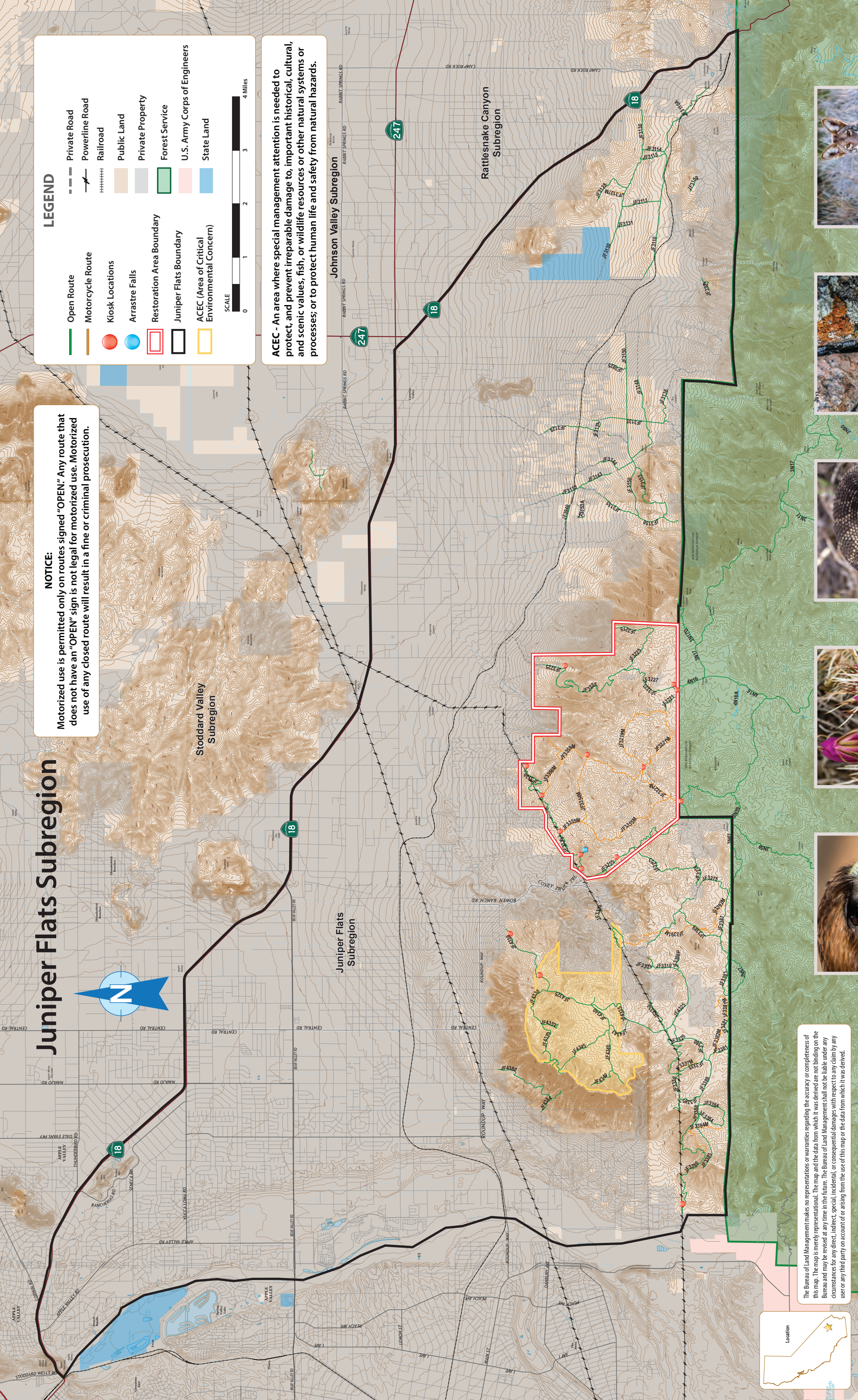
Juniper Flats

Limited Use Area



Map and Guide

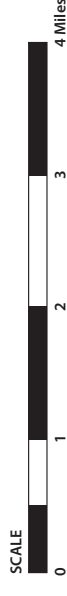
Juniper Flats Subregion



NOTICE: Motorized use is permitted only on routes signed "OPEN." Any route that does not have an "OPEN" sign is not legal for motorized use. Motorized use of any closed route will result in a fine or criminal prosecution.

LEGEND

- Open Route
- Motorcycle Route
- Kiosk Locations
- Arrastre Falls
- Restoration Area Boundary
- Juniper Flats Boundary
- ACEC (Area of Critical Environmental Concern)
- Private Road
- Powerline Road
- Railroad
- Public Land
- Private Property
- Forest Service
- U.S. Army Corps of Engineers
- State Land



ACEC - An area where special management attention is needed to protect, and prevent irreparable damage to, important historical, cultural, and scenic values, fish, or wildlife resources or other natural systems or processes; or to protect human life and safety from natural hazards.

The Bureau of Land Management makes no representations or warranties regarding the accuracy or completeness of this map. The map is merely representational. The map and the data from which it was derived are not binding on the Bureau and may be revised at any time in the future. The Bureau of Land Management shall not be liable under any circumstances for any direct, indirect, special, incidental, or consequential damages, with respect to any claim by any user or any third party on account of or arising from the use of this map or the data from which it was derived.

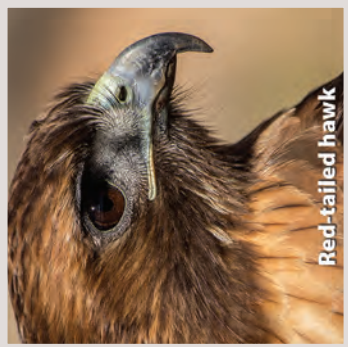


TAKE PRIDE IN JUNIPER FLATS, AND LEAVE IT AS YOU FOUND IT!

- Stay on designated routes. Desert plants provide homes and food for wildlife but are easily destroyed if walked on or run over by a vehicle.
- Pack out all trash. Even orange peels and other natural items decompose slowly in the high desert climate.
- Respect wildlife. Do not feed or approach wild animals. Observe them from a distance. Secure food out of their reach.
- Be careful with fire. Keep campfires small. Comply with fire restrictions.

SAFETY

Expect wild, rugged conditions and extreme temperatures. Prepare for your trip by learning about ways to stay safe in the back country. This brochure provides only limited safety information. If you arrive unprepared, you could become lost, dehydrated, injured, or even die. Your safety is your responsibility.



Red-tailed hawk



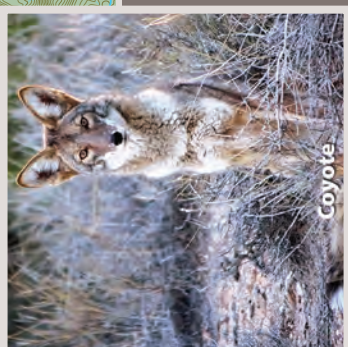
Hedgehog cactus



Rattlesnake



Dudleya and lichen



Coyote

A FEW RECOMMENDED SAFETY TIPS

- Carry plenty of water—a *minimum* of 1 gallon per person, per day.
- Tell someone where you are going and when you plan on returning.
- If you are stranded, stay with your vehicle.
- Dress appropriately for the season and changing weather.
- Do not approach or feed wildlife.

IN AN EMERGENCY, CALL 9-1-1

- Nearest Hospitals:**
- Victor Valley Global Medical Center
15248 11th Street
Victorville, CA 92395
(760) 245-8691
 - St. Mary Medical Center
18300 Highway 18
Apple Valley, CA 92317
(760) 242-2311

