

Surface Management Status 1:100,000-Scale Topographic Map

2016

U.S. DEPARTMENT OF THE INTERIOR BUREAU OF LAND MANAGEMENT

Edited and published by the Bureau of Land Management National Operations Center in cooperation with the Bureau of Land Management Colorado State Office. Planimetry partially revised by Bureau of Land Management from various source materials. Revised information not field checked.

Public Land Survey System derived from the Bureau of Land Management Geographic Coordinate Data Base. Land status and other source information compiled by Bureau of Land Management. Hypsography, hydrography, boundary, and transportation data derived from U.S. Geological Survey 1:100,000 scale digital line graphs. Digital line graphs based on 1:100,000 scale quadrangle map dated 1984.

Lambert Conformal Conic Projection North American Datum 1983 National Geodetic Vertical Datum of 1929

There may be private inholdings within the boundaries of the National or State reservations shown on this map. Land lines are omitted in areas of extensive tract surveys.

THIS MAP COMPLIES WITH NATIONAL MAP ACCURACY STANDARDS. In general, BLM Public Lands are open to a number of recreational activities in addition to those that may be highlighted on the map. These activities include camping, fishing, hiking, and hunting. Certain restrictions may apply. Contact appropriate BLM State, District, or Field Office for more information.

CONVERSION TABLE, DECLINATION DIAGRAM, ADJOINING MAPS. Includes a table for meters to feet conversion and a declination diagram showing magnetic north.

FOR SALE BY U.S. DEPARTMENT OF THE INTERIOR BUREAU OF LAND MANAGEMENT COLORADO STATE OFFICE LAKEWOOD, CO 80215



TOPOGRAPHIC MAP SYMBOLS

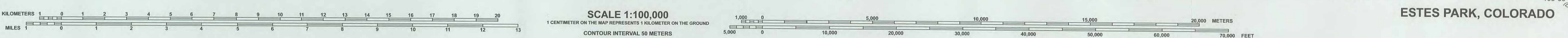
Table of topographic map symbols including road types, trails, landmarks, and terrain features with corresponding line styles and colors.

NOTE TO MAP USERS

The surface and subsurface management status concepts are published as general planning and management tools. Some of the lands, public and mineral rights, may have been reserved to the Bureau of Land Management. Treaties less than 60 acres are usually omitted because of the map scale. The official land records in the respective office of the Bureau of Land Management or other responsible Federal agencies should be checked for up-to-date status on any specific tract of land. Inadequacies in the BLM maps should be reported to the respective Bureau of Land Management offices for which the maps were prepared.

PUBLIC ACCESS

Roads crossing public lands may be traveled by the public unless closed by signage or notice by the land management agency. Public lands intersected by private roads may not have public access. Permission is required from the private landowner to cross private land, unless access is provided by a Federal, State, or County road, or a BLM road with legal access.



RECREATION SYMBOL LEGEND and RECREATION SITES, TRAILS AND AREAS LEGEND. Includes symbols for visitor centers, campgrounds, trails, and various recreation sites.

LAND STATUS LEGEND. Includes categories for Public Lands and Monuments, National Forests, National Wildlife Refuge & Mgmt Areas, National Parks and Monuments, Indian Land or Reservation, Public Lands Wilderness, National Forest Wilderness, National Wildlife Refuge Wilderness, National Parks/Monuments Wilderness, Other Federal Lands, and Indian Land or Reservation.

SPECIAL SYMBOL LEGEND, TOWNSHIP DIAGRAM, and INDEX TO 1:24,000-SCALE MAPS. Includes symbols for route/trail markers, Bureau of Land Management, Forest Service, National Park, Indian Reservation, County, National Wild and Scenic Rivers, and Roads with Public Access. Also includes a township diagram and an index to 1:24,000-scale maps.