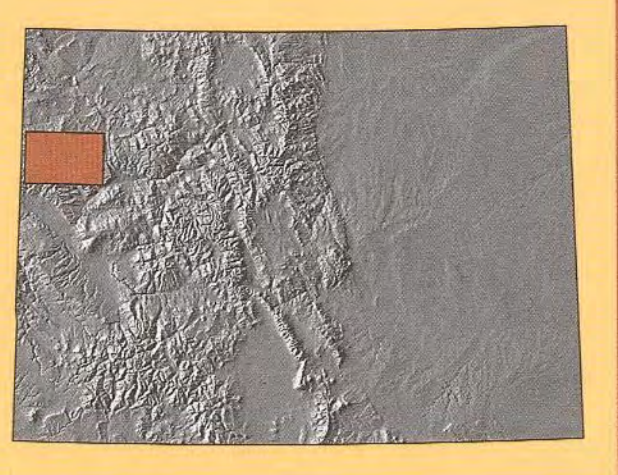


COLORADO

Douglas Pass



Surface Management Status
1:100,000-Scale Topographic Map

2009

U.S. DEPARTMENT OF THE INTERIOR
BUREAU OF LAND MANAGEMENT

Edited and published by the Bureau of Land Management National Operations Center in cooperation with the Bureau of Land Management Colorado State Office. Planimetry partially revised by Bureau of Land Management from various source materials. Revised information not field checked.

Public Land Survey System derived from the Bureau of Land Management Geographic Coordinate Data Base. Land status and other source information compiled by Bureau of Land Management. Hydrography, Hydrography, Boundary, and Transportation data derived from U.S. Geological Survey 1:100,000 scale digital line graphs. Digital area graphs based on 1:100,000 scale quadrangle map dated 1981.

Lambert Conformal Conic Projection
North American Datum 1983
National Geodetic Vertical Datum of 1929

There may be private inholdings within the boundaries of the National or State reservations shown on this map. Land lines are omitted in areas of extensive tract surveys.

THIS MAP COMPLIES WITH NATIONAL MAP ACCURACY STANDARDS
In general, BLM Public Lands are open to a number of recreational activities in addition to those that may be highlighted on the map. These activities include camping, fishing, hiking, and hunting. Certain restrictions may apply. Contact appropriate BLM State, District, or Field Office for more information.

CONVERSION TABLE		DECLINATION DIAGRAM		ADJOINING MAPS	
METERS	FEET	MAGNETIC		MAP NUMBER	
1000	3281			1 Vernal	
1250	4101			2 Rangely	
1500	4921			3 Meeker	
1750	5741			4 Seep Ridge	
2000	6562			5 Glenwood Springs	
2250	7382			6 Westwater	
2500	8202			7 Grand Junction	
2750	9022			8 Carbondale	
3000	9842				
3250	10663				
3500	11483				
3750	12303				

To convert meters to feet multiply by 3.2808
To convert feet to meters multiply by 0.3048

2009 Magnetic declination (MN) is based on the center of the map. Declination is approximate.

FOR SALE BY
U.S. DEPARTMENT OF THE INTERIOR
BUREAU OF LAND MANAGEMENT
COLORADO STATE OFFICE
LAKEWOOD, CO 80215
AND
U.S. GEOLOGICAL SURVEY
DENVER, CO 80225

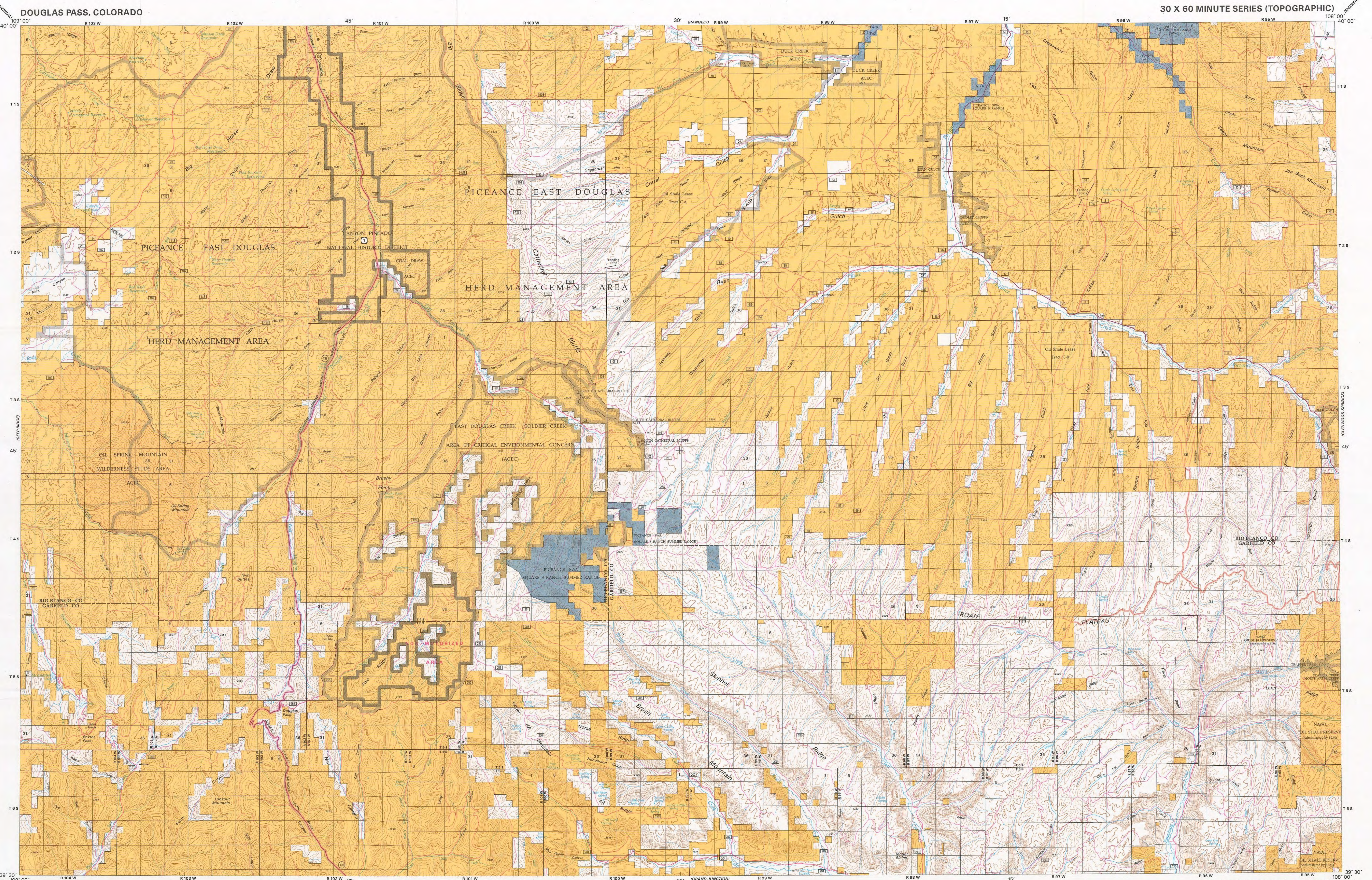
ISBN 978-1-4113-2439-6

TOPOGRAPHIC MAP SYMBOLS

Primary highway, hard surface
Secondary highway, hard surface
Light duty, hard, or aggregate surface
Streets, roads graded/natural surface
4WD, rough bladed or two-tracked surface
Trail (foot, pack, bicycle, or as labeled)
Road marker: Interstate, U.S. State
Railroad: standard gauge, narrow gauge
Bridge: overpass, underpass
Tunnel: road, railroad
Built up area: locality, elevation
Airport: landing field, landing strip
National boundary
State boundary
County boundary
National or State reservation boundary
Land grant boundary
U.S. public lands survey range, township and/or section
Land subject to controlled inundation
Special area boundary
Recreation area boundary
National trail, back country, scenic byway

NOTE TO MAP USERS
The surface and mineral management status overlayers are published as general planning and management tools. Some of the lands, surface and mineral rights, may have been shown as patented lands due to the lack of information available to BLM with respect to the status of the lands. No warranty is made by the BLM for use of the map for purposes not intended by BLM. The official U.S. public lands survey range, township and/or section information is maintained by the respective office of the Bureau of Land Management or other responsible Federal agencies and should be checked for up-to-date status on any specific tract of land. Inadequacies in the BLM maps should be reported to the respective Bureau of Land Management offices from which the maps were obtained.

PUBLIC ACCESS
Roads crossing public lands may be traveled by the public unless closed by signs or notices by the land management agency. Public lands traversed by private lands may not have public access. Permission is required from the private landowner to cross private land. Access is provided by a Federal, State, or County road, or a BLM road with legal access.



RECREATIONAL SYMBOL LEGEND

Picnic Area	Restrooms
Interpretive Trail	Archaeological Site

RECREATION SITES, TRAILS AND AREAS LEGEND

National Historic District	Wilderness Study Area
Area of Critical Environmental Concern (ACEC)	Oil Spring Mountain Wilderness Study Area

LAND STATUS LEGEND

Public Lands and Monuments (Admin by BLM)	Public Lands Wilderness (Admin by BLM)	Public Lands Wilderness Study Area (Admin by BLM)	Bankhead-Jones Land Use Land (Admin by Acquiring Agency)
National Forest (Admin by USFS)	National Forest Wilderness (Admin by USFS)	National Grasslands (Admin by USFS)	Cooks Bay Wagon Road (CBWR)
National Wildlife Refuge & Mgmt Areas (Admin by USFWS)	National Wildlife Refuge Wilderness (Admin by USFWS)	Military Reservation/Corps of Engineers (Admin by DOD)	Bureau of Reclamation Land (Admin by USBOR)
National Parks and Monuments (Admin by USNPS)	National Parks and Monuments Wilderness (Admin by USNPS)	State Land	State Land Wilderness
Indian Land or Reservation	Other Federal Lands (Admin by Titled Agency)	State, County, City, Wildlife, Park and Outdoor Recreation Areas	Private Land

SPECIAL SYMBOL LEGEND

Route / Trail Marker
Bureau of Land Management
Forest Service
National Park
Indian Reservation
County
National Wild and Scenic Rivers
Roads with Public Access

Note: Roads Partly Revised 2007

TOWNSHIP DIAGRAM

6	5	4	3	2	1
7	8	9	10	11	12
18	17	16	15	14	13
19	20	21	22	23	24
30	29	28	27	26	25
31	32	33	34	35	36

INDEX TO 1:24,000-SCALE MAPS

1	2	3	4	5	6	7	8
9	10	11	12	13	14	15	16
17	18	19	20	21	22	23	24
25	26	27	28	29	30	31	32

1 Banita Ridge
2 Water Canyon
3 Philadelphia Creek
4 Saffers Hill
5 Wolf Ridge
6 Square S Ranch
7 Greenwood Gulch
8 Seagr Mountain
9 Texas Creek
10 Douglas Pass
11 White Coyote Draw
12 Black Cabin Gulch
13 Yankee Gulch
14 Rock School
15 Jessup Gulch
16 No Name Ridge

17 East Evacuation Creek
18 Big Foundation Creek
19 Brushy Point
20 Razorback Ridge
21 Figure Four Spring
22 Bull Fork
23 Cutoff Gulch
24 McCarthy Gulch
25 Call Canyon
26 Henderson Ridge
27 Call Canyon
28 Henderson Ridge
29 Mount Blaine
30 Circle Dot Gulch
31 Circle Dot Gulch
32 Forked Gulch