



Surface Management Status
1:100,000-Scale Topographic Map

2011
U.S. DEPARTMENT OF THE INTERIOR
BUREAU OF LAND MANAGEMENT

Edited and published by the Bureau of Land Management National Operations Center in cooperation with the Bureau of Land Management Colorado State Office. Planimetry partially revised by Bureau of Land Management from various source materials. Revised information not field checked.

Public Land Survey System derived from the Bureau of Land Management Geographic Coordinate Data Base. Land status and other source information compiled by Bureau of Land Management. Hypsography, Hydrography, Boundary, and Transportation data derived from U.S. Geological Survey 1:100,000 scale digital line graphs. Digital line graphs based on 1:100,000 scale quadrangle map dated 1980.

Lambert Conformal Conic Projection
North American Datum 1983
National Geodetic Vertical Datum of 1929

There may be private inholdings within the boundaries of the National or State reservations shown on this map. Land lines are omitted in areas of extensive tract surveys.

THIS MAP COMPLIES WITH NATIONAL MAP ACCURACY STANDARDS

In general, BLM Public Lands are open to a number of recreational activities in addition to those that may be highlighted on the map. These activities include camping, fishing, hiking, and hunting. Certain restrictions may apply. Contact appropriate BLM State, District, or Field Office for more information.

| METERS | FEET | MM | 1 | 2 | 3 |
|--------|-------|------|----|----|----|
| 1000 | 3281 | 1000 | 1 | 2 | 3 |
| 1500 | 4921 | 1500 | 4 | 5 | 6 |
| 2000 | 6562 | 2000 | 6 | 7 | 8 |
| 2500 | 8202 | 2500 | 8 | 9 | 10 |
| 3000 | 9842 | 3000 | 10 | 11 | 12 |
| 3250 | 10681 | 3250 | 11 | 12 | 13 |

FOR SALE BY
U.S. DEPARTMENT OF THE INTERIOR
BUREAU OF LAND MANAGEMENT
COLORADO STATE OFFICE
LAKEWOOD, CO 80215
U.S. GEOLOGICAL SURVEY
DENVER, CO 80225

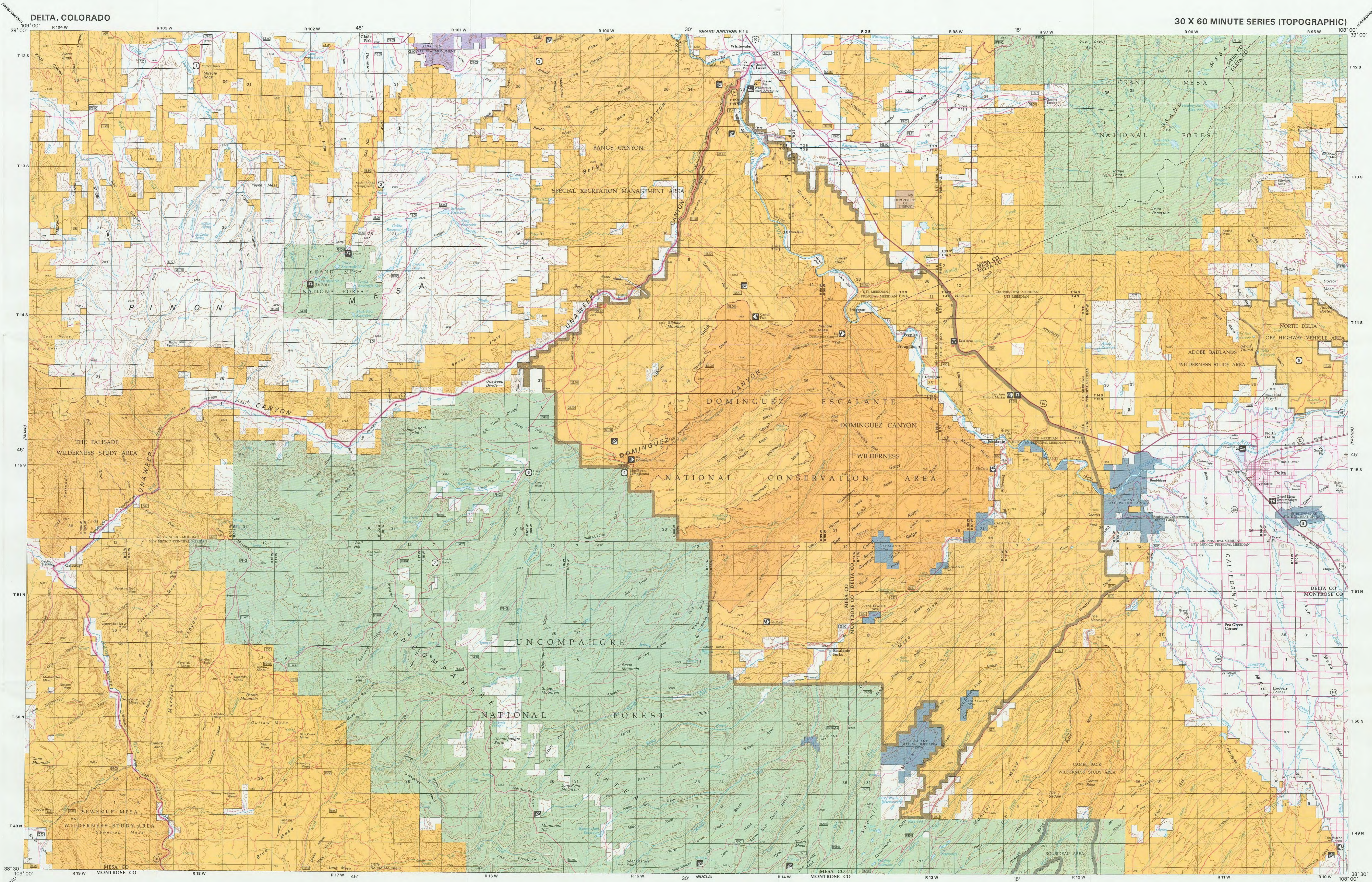
ISBN 978-1-4113-3240-9

TOPOGRAPHIC MAP SYMBOLS

| | | | | | | | | | | | | | | | | | | | | | | | | | | | | | | | | | | | |
|-------------------------------|---------------------------------|---------------------------------------|---------------------------------------|--|--|-------------------------------------|--|-----------------------------|-----------------------|------------------------------------|---------------------------------------|-------------------|----------------|-----------------|--|---------------------|--|--|-----------------------------------|--------------------|--------------------|-------------------------------|--|---|-----------------------|---|--|-------------------------|---------------------------------------|---|------------------------------------|---------------------------------------|----------------------|--------------------------|-----------------------------|
| Primary highway, hard surface | Secondary highway, hard surface | Light duty, hard or aggregate surface | Streets, roads graded/natural surface | 4WD, rough bitted or two-tracked surface | Trail (foot, pack, bicycle, or as labeled) | Road marker: Interstate, U.S. State | Railroad: standard gauge; narrow gauge | Bridge; overpass; underpass | Tunnel road; railroad | Built up area; locality; elevation | Airport; landing field; landing strip | National boundary | State boundary | County boundary | National or State reservation boundary | Land grant boundary | U.S. public lands survey; range, township, section | Range, township, section line; supplementary | Power transmission line; pipeline | Dam; dam with lock | Cemetery; building | Windmill; water wheel; spring | Mine shaft; adit or cave; mine, quarry; gravel pit | Campground; picnic area; US location monument | Ruins, cliff dwelling | Disturbed surface; strip mine, quarry, sand | Contours; index; intermediate; supplementary | Contour interval change | Stream, lake; perennial; intermittent | Rapid; ledge and small falls; large and small | Area to be submerged; marsh, swamp | Land subject to controlled inundation | Social area boundary | Recreation area boundary | National park, back country |
|-------------------------------|---------------------------------|---------------------------------------|---------------------------------------|--|--|-------------------------------------|--|-----------------------------|-----------------------|------------------------------------|---------------------------------------|-------------------|----------------|-----------------|--|---------------------|--|--|-----------------------------------|--------------------|--------------------|-------------------------------|--|---|-----------------------|---|--|-------------------------|---------------------------------------|---|------------------------------------|---------------------------------------|----------------------|--------------------------|-----------------------------|

NOTE TO MAP USERS
The surface and mineral management status overprints are published as general planning and management tools. Some of the lands, surface and mineral rights, are held in trust for the benefit of descendants. There are 40 areas in vicinity of Delta, Colorado. The official land status of the respective offices of the Bureau of Land Management responsible. Federal agencies should be checked for up-to-date status on any specific tract of land. Inquiries on the BLM map should be referred to the respective Bureau of Land Management offices from which the maps were obtained.

PUBLIC ACCESS
Roads crossing public lands may be travelled by the public unless closed by signs or posted by the land management agency. Public lands interest by private lands may not have public access. Permission is required from the private landowner to cross private land. Unless access is provided by a Federal, State or County road, or a BLM road with legal access.



RECREATIONAL SYMBOL LEGEND

| | |
|---------------------------|---------------------|
| Campground | Mountain Bike Trail |
| Picnic Area | Hiking Trail |
| All Terrain Vehicle Trail | Restrooms |
| Horse Trail | Drinking Water |
| Four Wheel Drive Trail | Trailhead |
| Boat Ramp | Ranger Station |
| Hand Launch | Showers |
| Historic Site | Swimming |
| Group Picnic Area | |
| Trailer Sanitary Station | |

RECREATION SITES, TRAILS AND AREAS LEGEND

| | | | |
|--|---|--|--|
| Public Lands and Monuments (Admin by BLM) | Public Lands Wilderness (Admin by BLM) | Public Lands Wilderness Study Area (Admin by BLM) | Bankhead-Jones Land Use Land (Admin by Acquiring Agency) |
| National Forest (Admin by USFS) | National Forest Wilderness (Admin by USFS) | National Grasslands (Admin by USFS) | Oregon & California Land (O&C) (Admin by USFS) |
| National Wildlife Refuge & Mgmt Area (Admin by USF&WS) | National Wildlife Refuge Wilderness (Admin by USF&WS) | Military Reservation/Corps of Engineers (Admin by DOD) | Bureau of Reclamation Land (Admin by USBRD) |
| National Parks and Monuments (Admin by USNPS) | National Parks/Monuments Wilderness (Admin by USNPS) | State Land | State Land Wilderness |
| Indian Land or Reservation | Other Federal Lands (Admin by Titled Agency) | Private Land | |

LAND STATUS LEGEND

SPECIAL SYMBOL LEGEND

| | | | | | | | |
|----------------------|---------------------------|----------------|---------------|--------------------|--------|---------------------------------|--------------------------|
| Route / Trail Marker | Bureau of Land Management | Forest Service | National Park | Indian Reservation | County | National Wild and Scenic Rivers | Roads with Public Access |
|----------------------|---------------------------|----------------|---------------|--------------------|--------|---------------------------------|--------------------------|

TOWNSHIP DIAGRAM

| | | | | | |
|----|----|----|----|----|----|
| 6 | 5 | 4 | 3 | 2 | 1 |
| 7 | 8 | 9 | 10 | 11 | 12 |
| 18 | 17 | 16 | 15 | 14 | 13 |
| 19 | 20 | 21 | 22 | 23 | 24 |
| 30 | 29 | 28 | 27 | 26 | 25 |
| 31 | 32 | 33 | 34 | 35 | 36 |

INDEX TO 1:24,000-SCALE MAPS

| | | | | | | | |
|----|----|----|----|----|----|----|----|
| 1 | 2 | 3 | 4 | 5 | 6 | 7 | 8 |
| 9 | 10 | 11 | 12 | 13 | 14 | 15 | 16 |
| 17 | 18 | 19 | 20 | 21 | 22 | 23 | 24 |
| 25 | 26 | 27 | 28 | 29 | 30 | 31 | 32 |

SCALE 1:100,000
1 CENTIMETER ON THE MAP REPRESENTS 1 KILOMETER ON THE GROUND
CONTOUR INTERVAL 60 METERS

DELTA, COLORADO