

Edited and published by the Bureau of Land Management National Operations Center in cooperation with the Bureau of Land Management Colorado State Office. Planimetry partially revised by Bureau of Land Management from various source materials. Revised information not field checked.

Public Land Survey System derived from the Bureau of Land Management Geographic Coordinate Data Base. Land status and other source information compiled by Bureau of Land Management. Hydrography, Hydrography, Boundary, and Transportation data derived from U.S. Geological Survey 1:100,000 scale digital line graphs. Digital line graphs based on 1:100,000 scale quadrangle map dated 1982.

Lambert Conformal Conic Projection  
North American Datum 1983  
National Geodetic Vertical Datum of 1929

There may be private inholdings within the boundaries of the National or State Reservations shown on this map. Land lines are omitted in areas of extensive tract surveys.

**THIS MAP COMPLIES WITH NATIONAL MAP ACCURACY STANDARDS**

In general, BLM Public Lands are open to a number of recreational activities in addition to those that may be highlighted on the map. These activities include camping, fishing, hiking, and hunting. Certain restrictions may apply. Contact appropriate BLM State, District, or Field Office for more information.

CONVERSION TABLE		DECLINATION DIAGRAM		ADJOINING MAPS		
METERS	FEET	M	N	1	2	3
2000	6562	95°	<p>2010 Magnetic declination (MN) is based on the center of the map. Diagram is approximate.</p>	1	2	3
2250	7382	4		4	5	
2500	8202	6		6	7	
2750	9022	8				
3000	9842					
3250	10663					
3500	11483					
3750	12303					
4000	13123					
4250	13943					

FOR SALE BY  
U.S. DEPARTMENT OF THE INTERIOR  
BUREAU OF LAND MANAGEMENT  
COLORADO STATE OFFICE  
LAKEWOOD, CO 80215

U.S. GEOLOGICAL SURVEY  
DENVER, CO 80226

ISBN 978-1-4113-3087-0

**TOPOGRAPHIC MAP SYMBOLS**

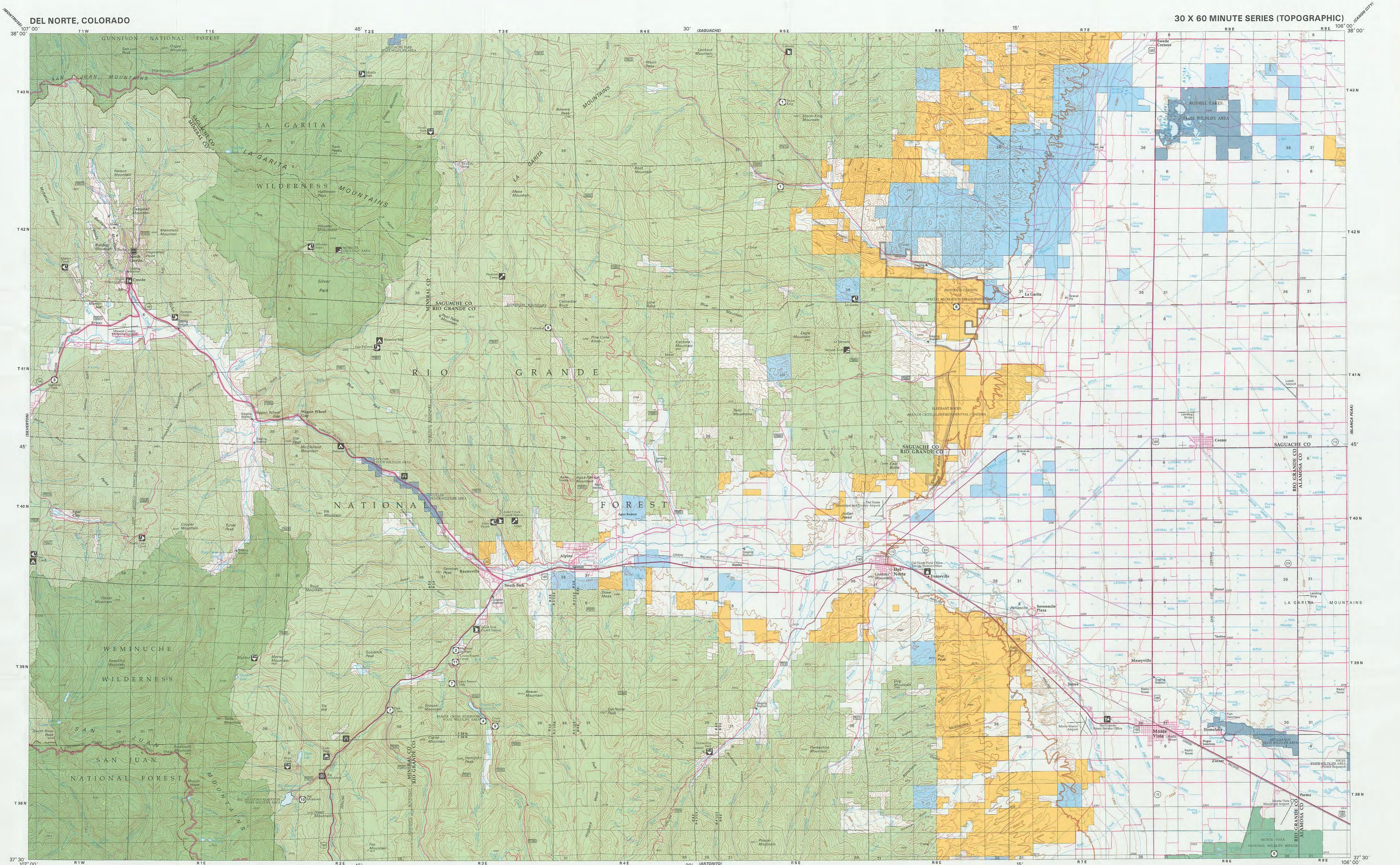
Primary highway, hard surface	
Secondary highway, hard surface	
Light duty, hard, or aggregate surface	
Streets, roads graded/drainage/natural surface	
AWD, rough bladed or two-tracked surface	
Trail (foot, pack, bicycle, or animal)	
Roads marked, Interstate U.S. State	
Railroad: standard gage, narrow gage	
Bridge: overpass, underpass	
Tunnel: road, railroad	
Built-up area: local, elevation	
Airport: landing field, landing strip	
National boundary	
State boundary	
County boundary	
National or State reservation boundary	
Land grant boundary	
U.S. public lands survey: range, township, section	
Range: township, section line, pre-1863	
Power transmission line: pipeline	
Dam: dam with lock	
Cemetery: building	
Well: water, well with spring	
Mine shaft: adit or cave, mine, quarry, gravel pit	
Campground: picnic area, US location monument	
Ruin: cliff dwelling	
Distorted surface: strip mine, quarry, sand	
Contour: index, intermediate, supplementary	
Contour interval change	
Stream, lake: perennial, intermittent	
Rapids, large and small, falls, large and small	
Area to be submerged, marsh, swamp	
Land subject to controlled inundation	
Special area boundary	
Recreation area boundary: scenic byway	

**NOTE TO MAP USERS**

The surface and mineral management estate viewpoints are published as general planning and management tools. Some of the lands, surface and mineral rights, may be shown as potential inroads due to the lack of information available to BLM with respect to the nature of acquisition. No warranty is made by the BLM for use of the map for purposes not intended by the BLM. The official land records in the respective offices of the Bureau of Land Management or other responsible Federal agencies should be checked for up-to-date status on any specific tract of land. Inquiries in the BLM maps should be referred to the respective Bureau of Land Management offices from which the maps were obtained.

**PUBLIC ACCESS**

Roads crossing public lands may be traveled by the public unless closed by signs or notices by the land management agency. Public lands inholdings by private lands may not have public access. Permission is required from the private landowner to cross private land, unless access is provided by Federal, State, or County road, or a BLM road with legal access.



**RECREATIONAL SYMBOL LEGEND**

Campground		Climbing	
Restrooms		Hiking Trail	
Drinking Water		Information	
Picnic Area		Winter Recreation Area	
Boat Ramp		Wheelchair Accessible	
All Terrain Vehicle Trail		Interpretive Auto Road	
Point of Interest		BLM Field Office	
Fishing		Ranger Station	
Trailhead		Other Forest Service Facility	
Horse Trail		Mountain Bike Trail	
Scenic Geology		Fee Area	

**RECREATION SITES, TRAILS AND AREAS LEGEND**

	1		15
	2		16
	3		17
	4		18
	5		19
	6		20
	7		21
	8		22
	9		23
	10		24
	11		25
	12		26
	13		27
	14		28
	15		29
	16		30
	17		31
	18		32

**LAND STATUS LEGEND**

Public Lands and Monuments (Admin by BLM)		Public Lands Wilderness (Admin by BLM)		Public Lands Wilderness Study Area (Admin by BLM)		Bankhead-Jones Land Use Land (Admin by Acquiring Agency)	
National Forest (Admin by USFS)		National Forest Wilderness (Admin by USFS)		National Grasslands (Admin by USFS)		Oregon & California Land (O&C) (Admin by USFS)	
National Wildlife Refuge & Mgmt Areas (Admin by USF&WS)		National Wildlife Refuge Wilderness (Admin by USF&WS)		Military Reservation/Corps of Engineers (Admin by DOD)		Bureau of Reclamation Land (Admin by USBOR)	
National Parks and Monuments (Admin by USNPS)		National Parks/Monuments Wilderness (Admin by USNPS)		Other Federal Lands (Admin by Titled Agency)		State Land Wilderness	
Indian Land or Reservation				State, County, City, Wildlife, Park and Outdoor Recreation Areas		Private Land	

**SPECIAL SYMBOL LEGEND**

Route / Trail Marker	
Bureau of Land Management	
Forest Service	
National Park	
Indian Reservation	
County	
National Wild and Scenic Rivers	
Roads with Public Access	

**TOWNSHIP DIAGRAM**

6	5	4	3	2	1
7	8	9	10	11	12
18	17	16	15	14	13
19	20	21	22	23	24
30	29	28	27	26	25
31	32	33	34	35	36

**INDEX TO 1:24,000-SCALE MAPS**

1	2	3	4	5	6	7	8
9	10	11	12	13	14	15	16
17	18	19	20	21	22	23	24
25	26	27	28	29	30	31	32

**SCALE 1:100,000**

1 CENTIMETER ON THE MAP REPRESENTS 1 KILOMETER ON THE GROUND

1:100,000

1 000 0 5,000 10,000 15,000 20,000 25,000 30,000 35,000 40,000 45,000 50,000 55,000 60,000 65,000 70,000 METERS

1 0 1 2 3 4 5 6 7 8 9 10 11 12 13 KILOMETERS

1 0 1 2 3 4 5 6 7 8 9 10 11 12 13 MILES

CONTOUR INTERVAL TO 40 METERS