



Surface Management Status 1:100,000-Scale Topographic Map

2009

U.S. DEPARTMENT OF THE INTERIOR BUREAU OF LAND MANAGEMENT

Edited and published by the Bureau of Land Management National Operations Center in cooperation with the Bureau of Land Management Colorado State Office.

Public Land Survey System derived from the Bureau of Land Management Geographic Coordinate Data Base. Land status and other source information compiled by Bureau of Land Management.

Lambert Conformal Conic Projection North American Datum 1983 National Geodetic Vertical Datum of 1929

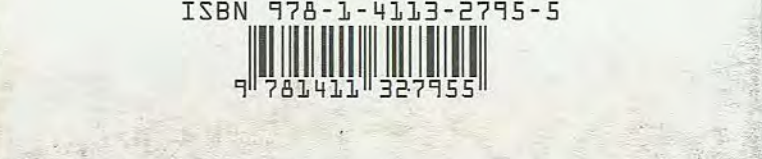
There may be private inholdings within the boundaries of the National or State reservations shown on this map. Land lines are omitted in areas of extensive tract surveys.

THIS MAP COMPLIES WITH NATIONAL MAP ACCURACY STANDARDS

In general, BLM Public Lands are open to a number of recreational activities in addition to those that may be highlighted on the map.

CONVERSION TABLE, DECLINATION DIAGRAM, ADJOINING MAPS

FOR SALE BY U.S. DEPARTMENT OF THE INTERIOR BUREAU OF LAND MANAGEMENT COLORADO STATE OFFICE



TOPOGRAPHIC MAP SYMBOLS

Table of topographic map symbols including roads, trails, and landmarks.

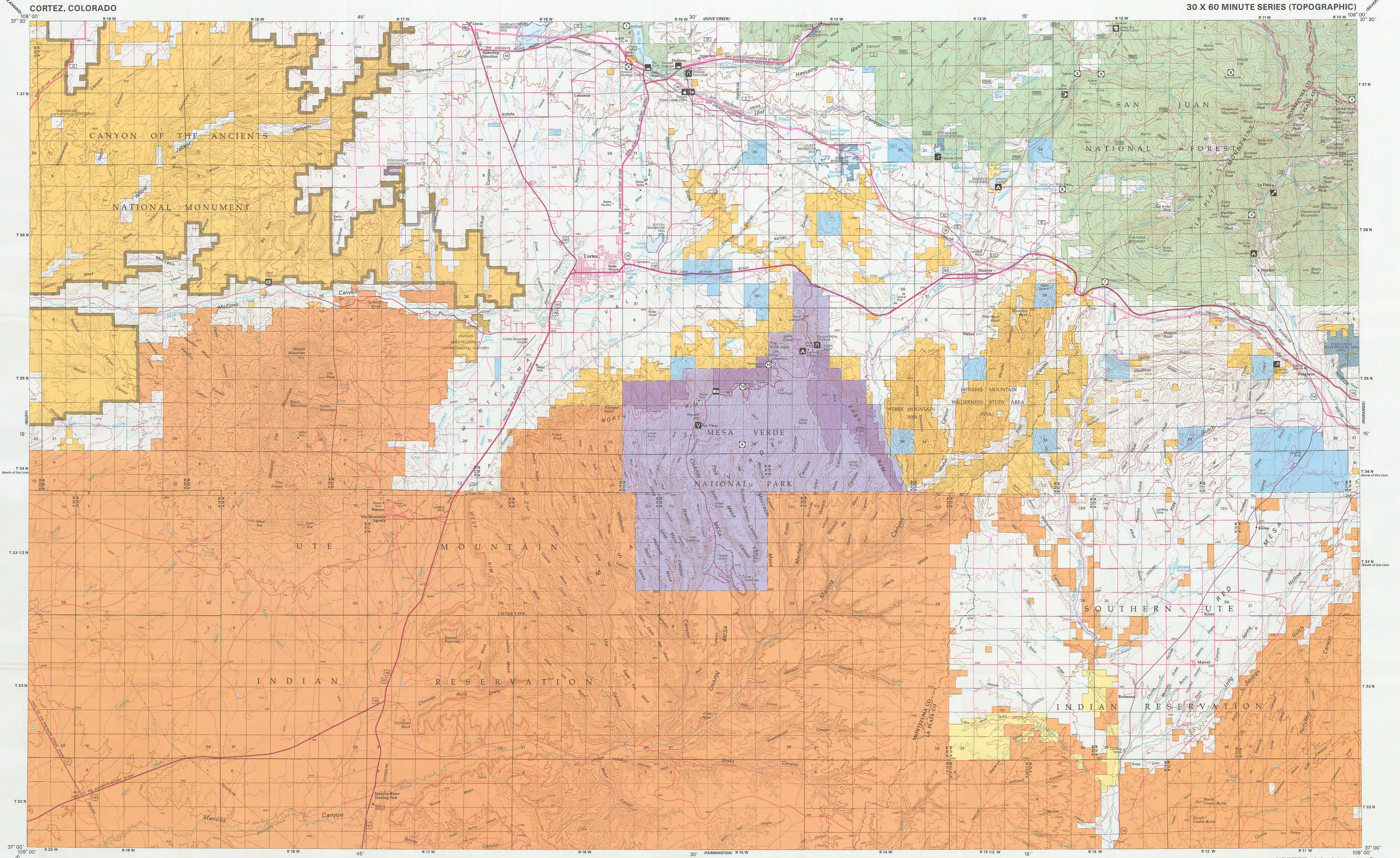
NOTE TO MAP USERS

The surface and mineral management status overlays are published as general information only. Some of the lands, surface and mineral rights, may have been shown as patented lands due to the lack of information available to BLM with respect to the status of acquisition.

PUBLIC ACCESS

Roads crossing public lands may be traveled by the public unless closed by posting or notice by the land management agency.

30 X 60 MINUTE SERIES (TOPOGRAPHIC)



RECREATIONAL SYMBOL LEGEND

RECREATION SITES, TRAILS AND AREAS LEGEND

Public Lands and Monuments (Admin by BLM)

Public Lands Wilderness (Admin by BLM)

Public Lands Wilderness Study Area (Admin by BLM)

Bankhead-Jones Land Use Land (Admin by Acquiring Agency)

Special Symbol Legend

TOWNSHIP DIAGRAM

INDEX TO 1:24,000-SCALE MAPS

CORTEZ, COLORADO

CORTEZ, COLORADO