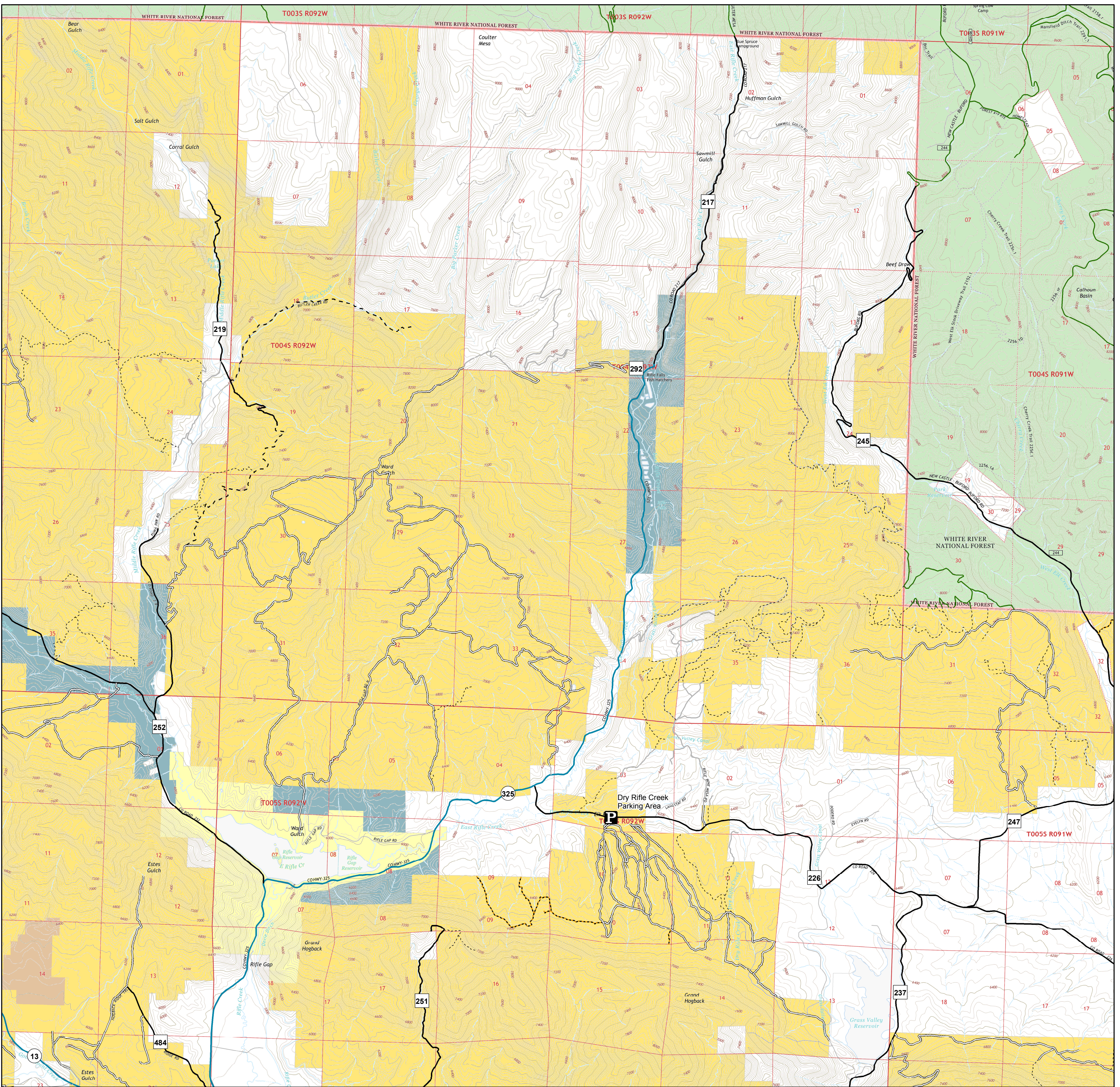




Cedar Mountain- Colorado River Valley Field Office



BLM Routes

- Open to ATV (<50 in), Motorcycles, Bikes, Hikers, & Equestrians
- Open to Bikes, Hikers, Equestrians
- Open to Hikers, Equestrian, and Livestock
- Open to all Modes of Transportation
- Other Designation - Note in Route Designation Other

Major Roads

- County
- State Highway
- USFS
- Unknown route

- Bureau of Land Management
- Bureau of Reclamation
- Other Federal
- Private
- State
- State Wildlife Area
- US Forest Service

No warranty is made by the Bureau of Land Management as to the accuracy, reliability, or completeness of these data for individual use or aggregate use with other data, or for the purposes not intended by the BLM. Spatial information may not meet National Map Accuracy Standards. This information may be updated without notification.