

Edited and published by the Bureau of Land Management National Operations Center in cooperation with the Bureau of Land Management Colorado State Office. Primary data revised by Bureau of Land Management from various source materials. Revised information not field checked.

Public Land Survey System derived from the Bureau of Land Management Geographic Coordinate Data Base. Land status and other source information compiled by Bureau of Land Management. Hypsography, Hydrography, Boundary, and Transportation data derived from U.S. Geological Survey 1:100,000 scale digital line graphs. Digital line graphs based on 1:100,000 scale quadrangle map dated 1982.

Lambert Conformal Conic Projection
North American Datum 1983
National Geodetic Vertical Datum of 1929

There may be private inholdings within the boundaries of the National or State reservations shown on this map. Land lines are omitted in areas of extensive tract surveys.

THIS MAP COMPLIES WITH NATIONAL MAP ACCURACY STANDARDS

In general, BLM Public Lands are open to a number of recreational activities in addition to those that may be highlighted on the map. These activities include camping, fishing, hiking, and hunting. Certain restrictions may apply. Contact appropriate BLM State, District, or Field Office for more information.

CONVERSION TABLE

METERS	FEET
1750	5741
2000	6562
2250	7383
2500	8204
2750	9025
3000	9846
3250	10667
3500	11488
3750	12309
4000	13130

DECLINATION DIAGRAM

ADJOINING MAPS

	1	2	3
1	2	3	4
5	6	7	8

FOR SALE BY
U.S. DEPARTMENT OF THE INTERIOR
BUREAU OF LAND MANAGEMENT
COLORADO STATE OFFICE
LAKEWOOD, CO 80215
AND
U.S. GEOLOGICAL SURVEY
DENVER, CO 80225

ISBN 9781413227619

FOR SALE BY
U.S. DEPARTMENT OF THE INTERIOR
BUREAU OF LAND MANAGEMENT
COLORADO STATE OFFICE
LAKEWOOD, CO 80215
AND
U.S. GEOLOGICAL SURVEY
DENVER, CO 80225

ISBN 9781413227619

TOPOGRAPHIC MAP SYMBOLS

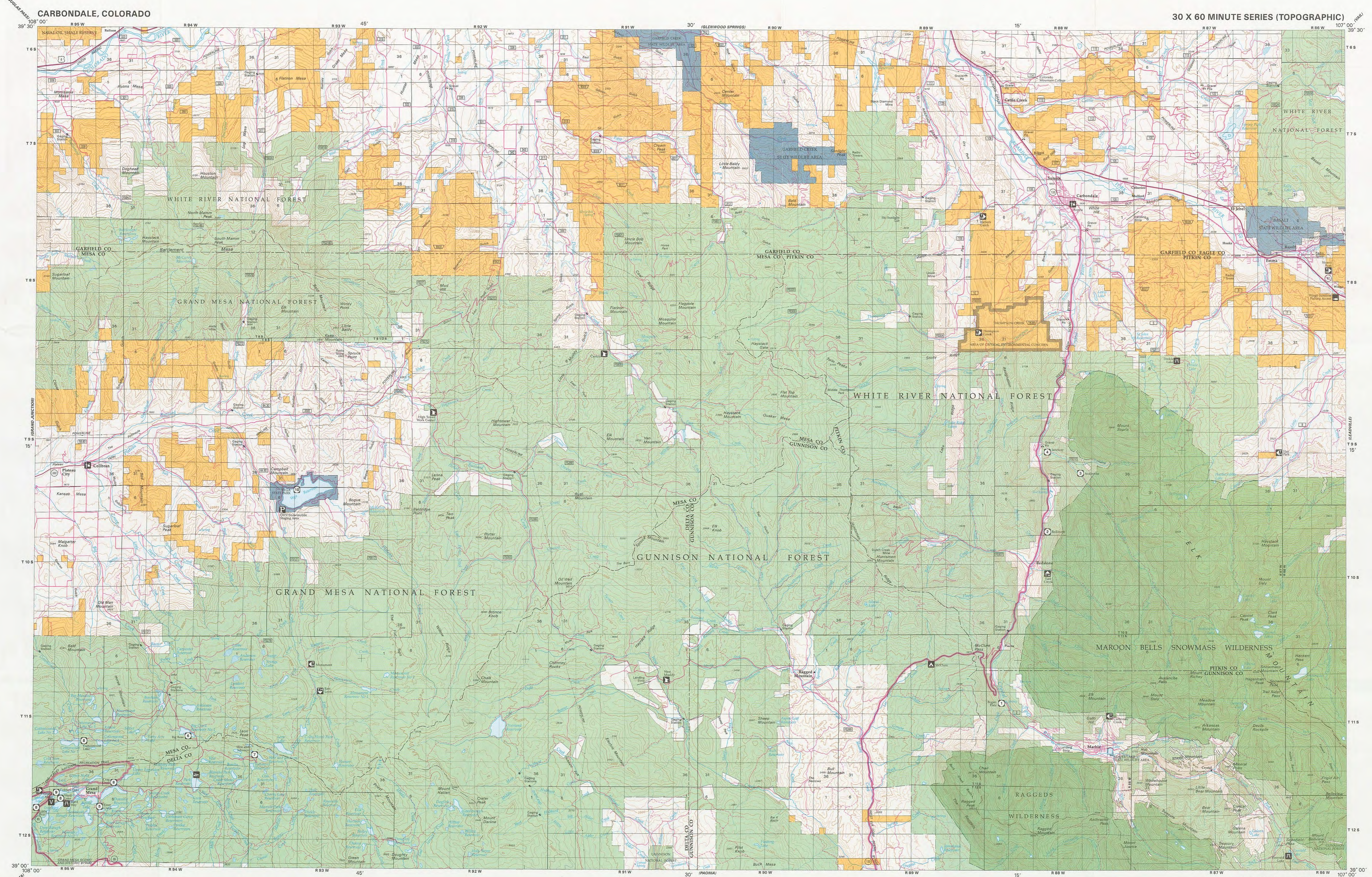
Primary highway, hard surface
Secondary highway, hard surface
Light dirt, level, or aggregate surface
Streets, roads graded/drainage surface
4WD, rough bleaded or two-tracked surface
Trail (foot, pack, bicycle, or eel labeled)
Roads marked Interstate, U.S. State
Railroad: standard gage, narrow gage
Bridge: overpass, underpass
Tunnel: road, railroad
Built up area: locality, abutment
Airport: landing field, landing strip
National boundary
State boundary
County boundary
National or State reservation boundary
Land grant boundary
U.S. public lands survey: range, township, section
Range, township, section line, protracted
Power transmission line: electric
Dam: dam with lock
Cemetery: building
Windmill: water well, spring
Mine shaft: adit or cave; mine, quarry, gravel pit
Campground: picnic area; US location monument
Ruins: cliff dwelling
Distorted surface: strip mine, quarry, sand
Contours: index, intermediate, supplementary
Contour interval change
Stream, lake: perennial, intermittent
Area to be submerged: marsh, swamp
Land subject to controlled inundation
Special area boundary
Recreation area boundary
National trail, back country, scenic, historic

NOTE TO MAP USERS

The surface and mineral management status information is published as general planning and management tools. Some of the lands, surface and mineral rights, may have been previously reserved to the State or Federal Government. The BLM is not responsible for the accuracy of the information shown on this map. The official responsible Federal agencies should be contacted for up-to-date status on any specific lands. The Bureau of Land Management office from which the maps were reproduced.

PUBLIC ACCESS

Roads crossing public lands may be traveled by the public unless closed by signs or posted by the land management agency. Public lands reserved for private lands may not have public access. Permission is required from the State, or County road, or a BLM road with legal access.



RECREATIONAL SYMBOL LEGEND

Campground	A
Hiking Trail	1
Fishing	2
Horse Trail	3
Trailhead	4
Bot Ramp	5
Motorboating	6
Mountain Bike Trail	7
Visitor Center	V
Ranger Station	R
Cross Country Skiing	C
Restrooms	8
Drinking Water	9
Other Forest Service Facility	10
Wheelchair Accessible	11
Fee Area	S

RECREATION SITES, TRAILS AND AREAS LEGEND

1	2	3	4	5	6	7	8	9	10	11	12	13	14	15	16	17	18	19	20	21	22	23	24	25	26	27	28	29	30	31	32
---	---	---	---	---	---	---	---	---	----	----	----	----	----	----	----	----	----	----	----	----	----	----	----	----	----	----	----	----	----	----	----

LAND STATUS LEGEND

Public Lands and Monuments (Admin by BLM)
National Forest (Admin by USFS)
National Wildlife Refuge & Mgmt Areas (Admin by USFWS)
National Parks and Monuments (Admin by USNPS)
Indian Land or Reservation
Public Lands Wilderness or Wilderness Study Area (Admin by BLM)
National Forest Wilderness (Admin by USFS)
National Wildlife Refuge Wilderness (Admin by USFWS)
National Parks/Monuments Wilderness (Admin by USNPS)
Indian Land or Reservation Wilderness
Bankhead-Jones Land Use Land (Admin by Acquiring Agency)
National Grasslands (Admin by USFS)
Military Reservation/Corps of Engineers (Admin by DOD)
State Land
State, County, City, Wildlife, Park and Outdoor Recreation Areas
Oregon & California Land (O&C) Coos Bay Wagon Road (CBWR) (Admin by USBOR)
Other Federal Lands (Admin by Titled Agency)
State Land Wilderness
Private Land

SPECIAL SYMBOL LEGEND

Route / Trail Marker
Bureau of Land Management
Forest Service
National Park
Indian Reservation
County
National Wild and Scenic Rivers
Roads with Public Access

TOWNSHIP DIAGRAM

6	5	4	3	2	1
7	8	9	10	11	12
18	17	16	15	14	13
19	20	21	22	23	24
30	29	28	27	26	25
31	32	33	34	35	36

INDEX TO 1:24,000-SCALE MAPS

1	2	3	4	5	6	7	8
9	10	11	12	13	14	15	16
17	18	19	20	21	22	23	24
25	26	27	28	29	30	31	32

RECREATION SITES, TRAILS AND AREAS LEGEND

1	2	3	4	5	6	7	8	9	10	11	12	13	14	15	16	17	18	19	20	21	22	23	24	25	26	27	28	29	30	31	32
---	---	---	---	---	---	---	---	---	----	----	----	----	----	----	----	----	----	----	----	----	----	----	----	----	----	----	----	----	----	----	----