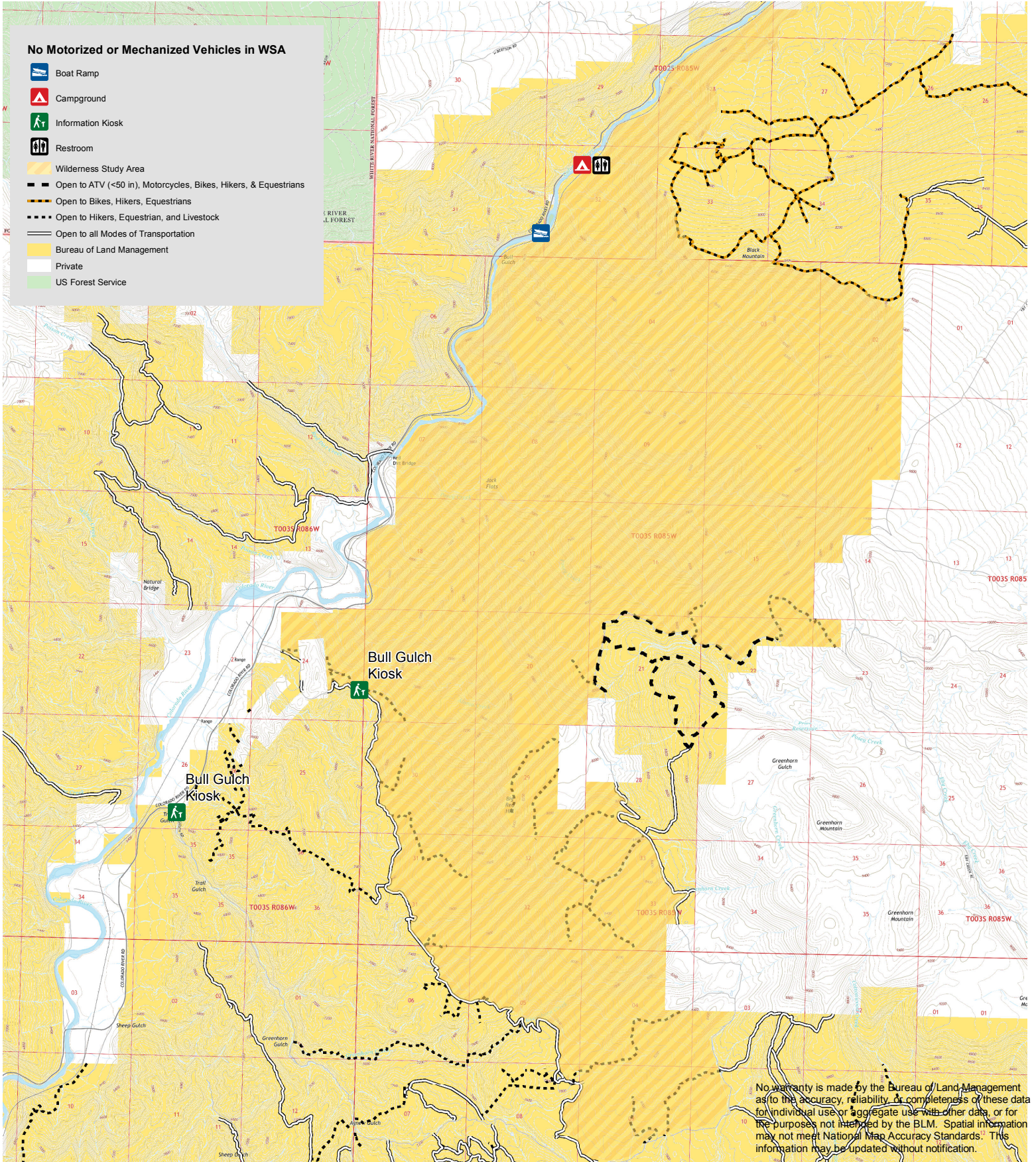




Bull Gulch WSA- Colorado River Valley Field Office

No Motorized or Mechanized Vehicles in WSA

- Boat Ramp
- Campground
- Information Kiosk
- Restroom
- Wilderness Study Area
- Open to ATV (<50 in), Motorcycles, Bikes, Hikers, & Equestrians
- Open to Bikes, Hikers, Equestrians
- Open to Hikers, Equestrian, and Livestock
- Open to all Modes of Transportation
- Bureau of Land Management
- Private
- US Forest Service



No warranty is made by the Bureau of Land Management as to the accuracy, reliability, or completeness of these data for individual use or aggregate use with other data, or for the purposes not intended by the BLM. Spatial information may not meet National Map Accuracy Standards. This information may be updated without notification.