
BLM Facts

Oregon and Washington
1987



U.S. Department of the Interior
Bureau of Land Management



U.S. Department of the Interior

BUREAU OF LAND MANAGEMENT

OREGON STATE OFFICE

P.O. Box 2965 (825 NE Multnomah Street)

Dear Reader:

In 1987, the BLM in Washington and Oregon faced one of its biggest challenges—massive wildfire activity on the public land. Firefighters from across the nation came to this state to help save lives, resources, and property. In the two states, 133 human-caused fires burned more than 17,500 acres, while 401 lightning-caused fires burned more than 58,500 acres. Although our resources were hit hard and stretched almost to their limits, our employees have been able to help the land start its slow trip back.

But fire was not the only big event in the past year. Before you turn to the facts portion of this publication, I hope you will take the time to note some of the major achievements of fiscal year 1987 listed below.

In June, the Oregon-Washington Riparian Enhancement Plan was issued. This plan set goals and objectives for the management of riparian areas on 656 miles of Bureau-administered streams in the two states. As a part of this plan, each District established one or more riparian demonstration areas to show the public and various interest groups how successful riparian management can be in diverse environments.

This past year, 1489 volunteers contributed 98,964 hours of work to BLM valued at more than \$930,000.

In western Oregon 1.3 million board feet (MMBF) of timber were harvested. In addition, 1.143 MMBF were offered for sale and 45 MMBF were credited in fiscal year 1987 in Medford to compensate for sales protested and appealed in fiscal year 1985. Also in FY 1987, 13,604,000 seedling trees were planted to reforest 27,746 acres.

In Oregon, BLM acquired approximately 4,694 acres of private land within the Steens Mountain Recreation Area and about 805 acres of private land within the Owyhee Wild and Scenic River boundary. Both purchases were from the Trust for Public Lands and funded through the Land and Water Conservation Fund.

Approximately 156 acres were acquired in the State of Washington for riparian habitat through the Challenge Grant Program. An additional 279 acres were acquired within the Juniper Dunes Wilderness Study Area in Washington.

Under the President's Productivity Improvement Program this past year, a review of the Western Oregon Road Maintenance Program was completed resulting in an 8% reduction in the workforce and a \$390,000 saving in heavy equipment investment. In fiscal year 1987, only 13% of road maintenance expenditures went for federal employee salaries. The remainder was expended through the private sector.

During fiscal 1987, nine intensive evaluations of archaeological sites were conducted to determine their scientific importance. These evaluations included sites at Gerber Reservoir, along the Umpqua River, in Warner Valley, and in the foothills near Eugene.

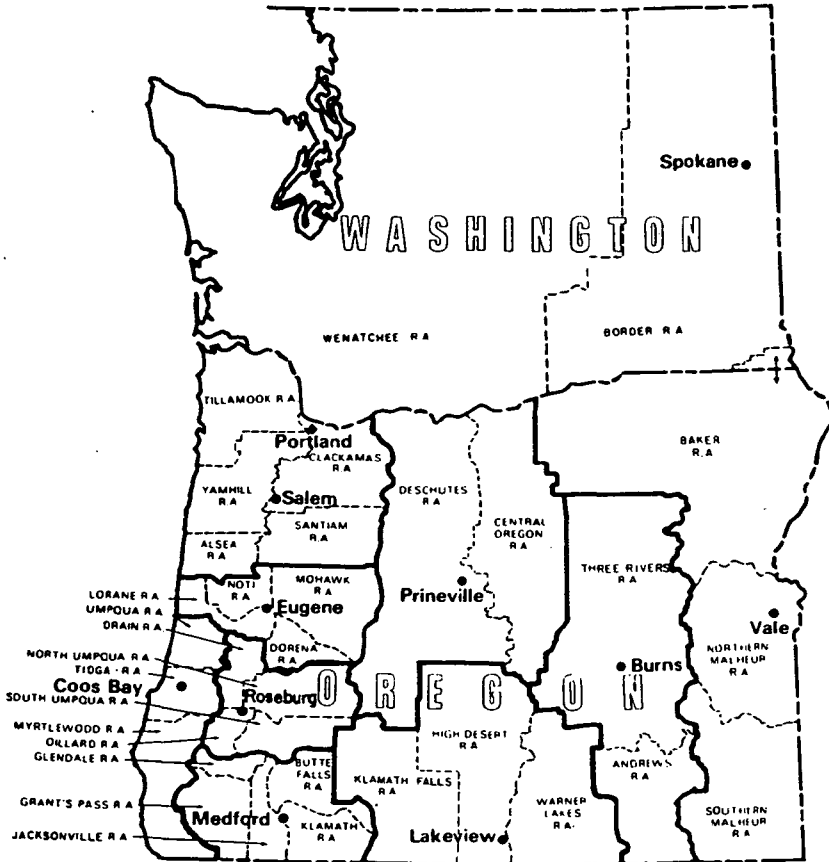
Approximately 900 horses were gathered from public lands in fiscal 1987. This brings Oregon and Washington to within less than 10% of their established management limits—one of the first Western States to reach this goal.

As State Director, I am proud of these accomplishments and the role our employees, volunteers, and other members of the public have played in helping us maintain our public lands. Most of all, though, I look forward to the challenges of the coming year.

Sincerely,

Charles W. Lusk
State Director

BLM Offices in Oregon & Washington



Oregon State Office 825 N.E. Multnomah Street P.O. Box 2965 Portland, OR 97208	231-6251	Charles W. Luscher State Director
Lakeview District 1000 Ninth Street S. P.O. Box 151 Lakeview, OR 97630	947-2177	Judy Nelson District Manager
Burns District HC 74-12533, Hwy. 20 West Hines, OR 97738	573-5241	Joshua L. Warburton District Manager
Vale District 100 Oregon Street P.O. Box 700 Vale, OR 97918	473-3144	William C. Calkins District Manager
Prineville District 185 East 4th Street P.O. Box 550 Prineville, OR 97754	447-4115	James L. Hancock District Manager
Salem District 1717 Fabry Road, S.E. P.O. Box 3227 Salem, OR 97302	399-5646	Van Manning District Manager
Eugene District 1255 Pearl Street P.O. Box 10226 Eugene, OR 97401	687-6600	Ronald L. Kaufman District Manager
Roseburg District 777 N.W. Garden Valley Blvd. Roseburg, OR 97470	672-4491	Mel Berg District Manager
Medford District 3040 Biddle Road Medford, OR 97501	776-4174	David Jones District Manager
Coos Bay District 333 S. Fourth Street Coos Bay, OR 97420	269-5880	Melvin E. Chase District Manager
Spokane District East 4217 Main Spokane, WA 99202	509-456-2570	Joseph K. Buesing District Manager

Contents

1 Introduction

2 Administration

- 2 Employees of BLM
- 2 Lands Managed by BLM in each District
- 3 Lands Managed by BLM in each County
- 4 Collections and Expenditures Graph
- 5 Expenditures for Resource Management
- 5 Collections, Classified by commodity, FY 1986-Oregon
- 6 Collections, Classified by Commodity, FY 1987-Oregon
- 6 Collections, Classified by Commodity, FY 1986-Washington
- 7 Collections, Classified by Commodity, FY 1987-Washington
- 7 Revenue Sharing
- 8 Payments to Counties and State, FY 1986-Oregon
- 9 Payments to Counties and State, FY 1987-Oregon
- 10 Payments to Counties and State, FY 1986-Washington
- 11 Payments to Counties and State, FY 1987-Washington

12 Forestry

- 13 Commercial Forest Land
- 13 Timber Sales
- 14 Timber Harvests
- 14 Harvested Volume
- 14 Commercial Forest Acres With No Planned Timber Harvest
- 15 Timber Trespasses
- 15 Minor Forest Products Sales
- 16 Forest Development-I
- 17 Forest Development-II
- 18 Forest Development-III

19 Wild Horse and Burro Program

- 19 Wild Horse Management

20 Rangelands

- 21 Livestock Grazing
- 22 Resource Development and Conservation

23 Wildlife Habitat

- 24 Big Game Population Estimates
- 24 Wildlife Habitat on BLM Lands
- 25 Wildlife Habitat Improvement
- 25 Aquatic Habitat Improvement

26 Recreation

- 26 Recreation Management
- 27 Estimated Recreation Visits to BLM Lands

28 Wilderness

29 Minerals and Energy

- 29 Mineral and Mining Statistics
- 29 Leasable Minerals Operations
- 30 Minerals
- 30 Geothermal Leases
- 30 Federal Lands Available for Mining and Mineral Leasing

31 Support

- 31 Fire Statistical Summary
- 32 Numbers of Fires by Size-Class
- 32 Prescribed Fire Statistical Summary
- 33 Roads Constructed
- 33 Rights of Way
- 34 Roads Maintained
- 34 Road Right of Way Permits and Agreements
- 34 Road Right of Way Easements and Lands Acquired
- 35 Other Acquisitions
- 35 Withdrawal Review Recommendations
- 36 Lands Transferred Between BLM and Other Federal Agencies
- 36 Land Leases
- 37 Public Land Surveys
- 37 Lands Received by BLM
- 38 Land Patents Issued



Big Indian Gorge, Steens Mountain, Burns District

BLM in Oregon and Washington manages about 16 million acres of public lands (15.7 million acres and 300,000 respectively) and has subsurface mineral responsibilities for an additional 23.4 million acres in Oregon and about 16.5 million acres in Washington.

Natural resources managed by BLM on forestland and rangeland include forest products, livestock forage, minerals, soil, water and air, wildlife habitat and wild horses. Uses administered include recreation, mineral extraction, and realty actions. BLM programs provide for the development and use of the public land and its resources under principles of multiple use and sustained yield while maintaining and enhanc-

ing the quality of the environment.

In relation to these resource management programs, BLM in Oregon and Washington conducts a variety of programs such as lands and mineral records, cadastral survey, fire management, law enforcement and construction and maintenance.

BLM programs in Oregon are funded in two separate appropriations from Congress, one for resource management on Revested Oregon and California Railroad lands (O&C) and reconveyed Coos Bay Wagon Road lands and the other for public domain lands. Activities in Washington are funded entirely for public domain lands.

Administration

This area covers such activities as personnel management, budget preparation and analysis, procurement, property management, organization planning, telecommunication, training, accounts and safety.

BLM is responsible for both collecting and paying out funds. BLM collects money from many sources utilizing the public lands and

deposits these monies in the U.S. Treasury. In turn, monies are paid out to Oregon and Washington. One payment is paid to the states for their share of receipts collected by BLM, another is made directly to counties in lieu of taxes. In western Oregon, the counties also receive an additional payment from O&C receipts.

Employees of BLM (Authorized permanent positions)

Districts	September 30 1987	September 30 1986
Lakeview	63	42
Burns	59	61
Vale	92	94
Prineville	43	50
Salem	194	197
Eugene	166	172
Roseburg	174	177
Medford	275	252
Coos Bay	165	176
Spokane	31	31
State Office	260	252
Total	1501¹	1525²

¹An additional 57 positions were authorized, but were temporarily reduced from office position ceilings pending funding and completion of an organization study.

²The figures in this column represent the position ceilings following completion of the organization study.

Lands Managed by BLM

Lands under the exclusive jurisdiction of each district of the Bureau of Land Management in Oregon and Washington includes public domain, re-vested Oregon & California Railroad grant lands, reconveyed Coos Bay Wagon Road grant lands, Land Utiliza-

tion Project Lands, and certain other categories. Acreages are as of September 30, 1987, and are approximate. Lands managed by BLM are 25 percent of the total acreage of Oregon and less than 1 percent of Washington.

District	Acres
Lakeview	3,337,140
Burns	3,617,394
Vale	4,960,730
Prineville	1,382,687
Salem	406,425
Eugene	316,618
Roseburg	423,862
Medford	911,453
Coos Bay	332,474
Oregon Total	15,688,783
Spokane	311,292
Total	16,000,075

Administration

Lands Managed by the Bureau of Land Management in Each County in Oregon and Washington (as of September 30, 1987).

Oregon		Washington	
County	Acres	County	Acres
Baker	367,772	Adam's	481
Benton	57,454	Asotin	10,422
Clackamas	66,967	Benton	18,188
Clatsop	43	Chelan	21,124
Columbia	11,081	Clallam	83
Coos	168,289	Clark	5
Crook	510,966	Columbia	519
Curry	67,510	Cowlitz	52
Deschutes	506,493	Douglas	37,520
Douglas	654,081	Ferry	11,459
Gilliam	23,340	Franklin	17,646
Grant	170,787	Garfield	433
Harney	4,106,890	Grant	37,094
Hood River	180	Grays Harbor	13
Jackson	430,921	Island	2
Jefferson	25,846	Jefferson	59
Josephine	311,510	King	340
Klamath	287,264	Kitsap	--
Lake	2,589,642	Kititas	16,009
Lane	289,149	Klickitat	16,407
Lincoln	20,073	Lewis	279
Linn	88,596	Lincoln	7,130
Maiheur	4,540,389	Mason	3
Marion	20,966	Okanogan	54,960
Morrow	2,347	Pacific	374
Multnomah	4,247	Pend Oreille	1,904
Polk	41,268	Pierce	12
Sherman	44,109	San Juan	282
Tillamook	49,455	Skagit	277
Umatilla	8,857	Skamania	63
Union	6,250	Snohomish	170
Wallowa	18,908	Spokane	--
Wasco	36,115	Stevens	29,738
Washington	12,009	Thurston	1
Wheeler	106,319	Wahkiakum	1
Yamhill	42,690	Walla Walla	630
Total	15,688,783	Whatcom	145
		Whitman	1,294
		Yakima	25,673
		Total	310,972

Administration

An important aspect of BLM administration is that BLM returns a profit to the Federal Treasury for the investment made in it by its shareholders—the American taxpayer. During fiscal year 1987 we reported receipts of \$154,290,184 against expenses of \$82,043,283. As always, those receipts were shared with state, county and local

governments. A total of \$78,675,755 was distributed in Oregon and Washington.

Total collections from all BLM resource management activities are several times more than total costs of management. Principal sources of revenue include timber sales, mineral lease fees and grazing fees.

Collections, Classified by Commodity, FY 1986 - Oregon

Commodity	O&C Lands		CBWR ³	Other Lands ⁴	Unrelated to Land Status
	BLM ¹	FS ²			
Mineral Leases	\$ --	\$ --	\$ --	\$ --	\$ --
Mineral (Material)					
Sales	--	--	--	8,162	--
Land Sales	--	--	--	19,551	--
Rent of Land	96,848	--	1,154	13,390	--
Sale of Timber	123,835,343	18,913,133	5,647,753	10,901,953	--
Grazing Fees	15,404	--	23	1,334,435	--
Recreation Fees	--	--	--	48,479	--
Other Resources	--	--	29,890	392,088	--
Other Fees	610,356	--	7,852	35,885	31,653
Penalties & Forfeitures	--	--	--	--	--
Other Sources	211,824	--	--	--	57,824
Totals	\$124,769,775	\$18,913,133	\$5,686,672	\$12,753,943	\$89,477
Total O&C	\$143,682,908				

Grand Total BLM, All Sources: \$162,213,000

¹Includes 2,074,602 acres of revested Oregon and California Railroad grant lands managed by the Bureau of Land Management.

²Includes 492,399 acres of revested Oregon and California Railroad grant lands managed by the Forest Service.

³Includes 74,547 acres of reconveyed Coos Bay Wagon Road grant lands managed by the Bureau of Land Management.

⁴Principally public domain and acquired lands managed by the Bureau of Land Management, plus other federal lands with respect to mineral leasing.

Administration

Collections, Classified by Commodity, FY 1987 - Oregon

Commodity	O&C Lands		CBWR ³	Other Lands ⁴	Unrelated to Land Status
	BLM ¹	FS ²			
Mineral Leases	\$ --	\$ --	\$ --	\$ --	\$1,236,496 ⁵
Mineral (Material)					
Sales	--	--	--	13,242	--
Land Sales	--	--	--	49,206	--
Rent of Land	105,676	--	2,049	13,790	--
Sale of Timber	116,943,110	18,863,112	4,819,772	8,489,469	--
Grazing Fees ⁶	14,035	--	23	1,270,002	--
Recreation Fees	--	--	--	51,065	--
Other Resources	--	--	29,496	51,152	--
Other Fees	687,193	--	55,206	20,812	37,152
Penalties & Forfeitures	--	--	--	--	--
Other Sources	231,140	--	--	--	340,230
Totals	\$117,981,154	\$18,863,112	\$4,906,546	\$9,958,738	\$1,613,878
Total O&C	\$136,844,266				
Grand Total BLM, All Sources:	\$153,323,428				

¹Includes 2,074,602 acres of revested Oregon and California Railroad grant lands managed by the Bureau of Land Management.

²Includes 492,399 acres of revested Oregon and California Railroad grant lands managed by the Forest Service.

³Includes 74,547 acres of reconveyed Coos Bay Wagon Road grant lands managed by the Bureau of Land Management.

⁴Principally public domain and acquired lands managed by the Bureau of Land Management, plus other federal lands with respect to mineral leasing.

⁵Collected from all federal mineral estate lands managed by BLM (public lands, other agency lands, and private surface ownership lands).

⁶From grazing permits and leases issued under Sections 3 and 15 of the Taylor Grazing Act.

Collections, Classified by Commodity, FY 1986 - Washington

Commodity	BLM Lands	Unrelated to Land Status
Mineral Leases	\$ --	\$ --
Mineral Sales	--	--
Land Sales	58,103	--
Rent of Land	--	--
Sale of Timber	194,293	--
Grazing Section 15	37,268	--
Recreation Fees	--	--
Other Resources	--	--
Other Fees	--	11,070
Penalties & Forfeitures	--	--
Other Sources	16,868	--
Total	\$306,532	\$ 11,070

Administration

Collections, Classified by Commodity, FY 1987 - Washington

Commodity	BLM Lands	Unrelated to Land Status
Mineral Leases*	\$111,682	\$411,816
Mineral Material Sales	--	--
Land Sales	49,282	--
Rent of Land	--	--
Sale of Timber	338,301	--
Grazing Sec. 15	32,579	--
Recreation Fees	--	--
Other Resources	--	--
Other Fees	--	14,365
Penalties & Forfeitures	--	--
Other Sources	8,731	--
Total	\$540,575	\$426,181

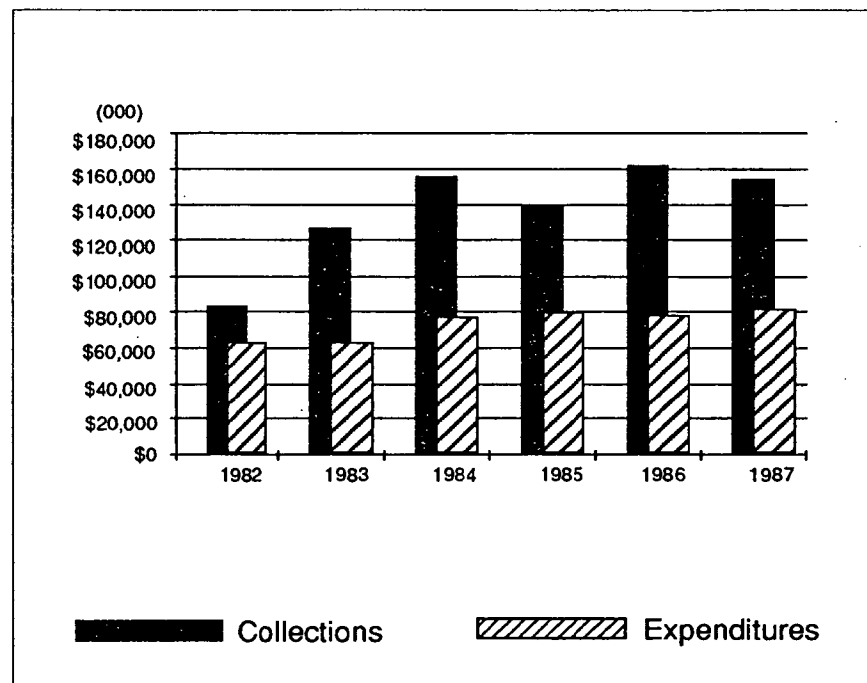
Grand Total, All Sources: \$966,756

*Collected from all federal mineral estate lands managed by BLM (public lands, other agency lands, and private surface ownership lands).

BLM Expenditures for Resource Management

	FY 1986	FY 1987
Forest Management	\$22,058,652	\$21,154,865
Forest Development	19,152,404	19,597,376
Range Management	3,191,539	3,582,922
Range Improvement	732,184	771,196
Soil and Watershed Conservation	1,489,493	2,540,746
Lands and Minerals	3,162,092	3,409,406
Wildlife Management	2,245,212	2,400,076
Recreation Management	1,871,873	1,827,527
Recreation Construction	17,334	875
Cadastral Survey	667,129	700,049
Resource Protection	2,408,050	2,495,600
Fire Presuppression	1,265,884	1,480,154
Fire Suppression	3,630,750	4,924,712
Fire & Storm Damage Rehabilitation	733,205	703,851
Forest Pest Control	74,688	41,302
Law Enforcement	576,801	644,332
Road Construction & Acquisition	1,549,486	815,426
Building Construction	--	12,112
Maintenance of Capital Investments	9,682,691	10,385,765
Planning and Data Management	1,159,855	1,658,181
Program Services	2,552,406	2,896,815
Total	\$78,221,728	\$82,043,283

Administration



Oregon and Washington Collections and Expenditures

Revenue Sharing

Total collections from all BLM resource management activities are several times more than total costs of management. Principal sources of revenue include timber sales, mineral lease fees and grazing fees.

Since federal lands are not taxed, various laws provide for payments to reimburse states and counties for the services they provide that benefit the Federal government. Some payments in lieu of taxes are based on acreages of federal land and shares received from resource revenues.

Proportions of collections from resource management that are shared with the states and counties vary from 4 percent to 90 percent, with the balance usually going to the general fund of the U.S. Treasury. For example, 50 percent of collections from management of the resources of the revested Oregon and California Railroad grant lands in western Oregon goes to the counties where the lands are located. On the other hand, 50 percent of most grazing fee receipts is used for range improvements by BLM, with 12.5 percent available for states to use for range improvements.

Administration

Payments to Counties and State, FY 1986 - Oregon

Counties	Resource Management O&C Lands	Mineral Leasing	Sec. 15 Grazing Leases	Payments in Lieu of Taxes	Totals
Baker	\$ --	\$ 156	\$ 196	\$ 97,526	\$ 97,877
Benton	285,804	23,025	--	1,932	287,736
Clackamas	564,489	29,521	--	49,424	613,913
Clatsop	--	--	--	303	303
Columbia	209,522	4,455	--	--	209,522
Coos	600,088 ²	45,066	--	6,657	606,745
Crook	--	3	469	90,276	90,748
Curry	371,241	2,352	--	56,658	427,899
Deschutes	--	133,187	563	137,349	137,946
Douglas	2,547,830 ³	184,546	48	90,291	2,638,169
Gilliam	--	--	2,408	3,462	5,871
Grant	--	--	12,923	167,078	180,001
Harney	--	12,242	972	295,803	296,775
Hood River	--	320	--	20,176	20,176
Jackson	1,593,792	67,737	1,210	44,827	1,639,829
Jefferson	--	8,234	834	28,098	28,932
Josephine	1,228,654	8,172	229	33,561	1,262,444
Klamath	238,001	43,097	3,859	205,118	446,978
Lake	--	29,102	61	315,011	315,072
Lane	1,553,108	106,497	8	131,606	1,684,722
Lincoln	36,616	2,608	--	17,516	54,132
Linn	268,514	32,586	--	46,177	314,691
Malheur	--	12,409	--	558,553	558,646
Marion	148,496	13,273	--	19,645	168,141
Morrow	--	1	149	15,593	15,743
Multnomah	110,864	2,239	--	6,785	117,649
Polk	219,693	13,407	--	--	219,693
Sherman	--	3	1,580	4,977	6,560
Tillamook	56,957	13,613	--	10,123	67,080
Umatilla	--	3	728	41,093	41,824
Union	--	3	259	59,844	60,106
Wallowa	--	--	1,298	111,558	112,856
Wasco	--	702	3,045	19,856	22,903
Washington	64,077	6,317	--	277	64,354
Wheeler	--	--	3,170	24,568	27,738
Yamhill	73,231	22,133	--	2,564	75,794
Total	\$ 10,170,977*	\$817,089	\$34,009	\$2,714,285	\$12,919,569

Payment to State of Oregon from sale of public domain timber, materials, and lands, totaling \$175,324 and Section 3 grazing permits totaling \$152,776

Distribution of proceeds to Oregon counties and to the State of Oregon derived from resource management on lands managed by the Bureau of Land Management in Oregon. Revenues are from sales of timber, grazing fees, mineral fees, rental and sales of land, P.I.L.T., and from other sources.

Total payments to counties and State, FY 1986 \$14,064,460

¹Includes mineral proceeds from O&C or CBWR lands.

²Includes \$359,226 of CBWR.

³Includes \$68,518 of CBWR.

* Amount actually paid during the fiscal year, 10/1/85 through 9/30/86. See table on page 5 for total O&C receipts.

\$50,952,550.35 was paid to the counties in late FY 1985. The normal cycle would have been to make the payment in early FY 1986. For this reason actual FY 1985 payments were larger and FY 1986 payments smaller than if payments were made on established schedule.

Administration

Payments to Counties and State, FY 1987 - Oregon

Counties	Resource Management O&C Lands	Mineral Leasing ¹	Sec. 15 Grazing Leases	Payments in Lieu of Taxes	Totals
Baker	\$ --	\$ 155	\$ --	\$ 100,905	\$ 100,960
Benton	2,025,981	7,241	18	1,996	2,035,236
Clackamas	3,915,408	20,576	--	51,051	3,987,035
Clatsop	--	105	--	312	417
Columbia	1,512,579	6,567	--	--	1,519,146
Coos	4,750,501 ²	7,870	--	6,911	4,765,282
Crook	--	71,697	314	93,193	165,204
Curry	2,608,668	--	--	58,526	2,667,194
Deschutes	--	116,581	659	141,944	259,184
Douglas	18,126,218 ³	51,628	49	93,353	18,271,148
Gilliam	--	7,049	2,396	3,556	13,001
Grant	--	9,103	11,303	172,895	193,301
Harney	--	47,539	1,866	305,539	354,944
Hood River	--	640	--	20,868	21,508
Jackson	11,100,367	18,446	1,318	46,326	11,166,457
Jefferson	--	9,215	706	28,997	38,918
Josephine	8,624,760	--	23	34,667	8,659,450
Klamath	1,641,411	30,962	3,651	212,463	1,888,487
Lake	--	26,276	69	325,379	351,724
Lane	11,047,962	43,357	12	136,005	11,227,336
Lincoln	295,953	1,662	--	18,089	315,704
Linn	1,928,924	16,314	--	47,697	1,992,935
Malheur	--	17,375	--	641,084	658,459
Marion	1,049,982	13,941	--	20,292	1,084,215
Morrow	--	14,396	126	15,809	30,331
Multnomah	777,773	343	--	7,012	785,128
Polk	1,553,074	2,786	--	--	1,555,860
Sherman	--	3,353	1,879	21,744	26,976
Tillamook	414,348	2,687	--	10,388	427,423
Umatilla	--	9,581	516	42,445	52,542
Union	--	3	247	61,818	62,068
Wallowa	--	--	1,170	115,290	116,460
Wasco	--	15,763	2,563	20,490	38,818
Washington	458,641	10,374	--	289	469,304
Wheeler	--	23,156	2,994	25,494	51,644
Yamhill	546,215	11,815	--	2,643	560,673
Total	\$72,378,765*	\$618,558	\$31,870	\$2,885,470	\$75,914,672

Payment to State of Oregon from sale of public domain timber, materials, and lands, totaling \$452,870 and Section 3 grazing permits totaling \$158,835 \$611,705

Distribution of proceeds to Oregon counties and to the State of Oregon derived from resource management on lands managed by the Bureau of Land Management in Oregon. Revenues are from sales of timber, grazing fees, mineral fees, rental and sales of land, P.I.L.T., and from other sources.

Total payments to counties and State, FY 1987 \$76,526,377

¹Does not include minerals proceeds from O&C or CBWR lands, but does include proceeds from rental and bonus payments on federally held leases

²Includes \$491,681 of CBWR.

³Includes \$45,633 of CBWR.

* Amount actually paid during the fiscal year, 10/1/86 through 9/30/87. See table on page 5 for total O&C receipts.

Administration

Payments to Counties and State, FY 1986 - Washington

Counties	Sec. 15 Grazing Leases	Payments in Lieu of Taxes	Totals
Adams	\$ 20	\$ 2,811	\$ 2,831
Asotin	509	6,311	6,820
Benton	426	28,783	29,209
Chelan	825	310,850	311,675
Clallam	--	63,256	63,256
Clark	--	1,282	1,282
Columbia	--	15,819	15,819
Cowlitz	--	1,967	1,967
Douglas	2,636	28,611	31,247
Ferry	1,055	49,384	50,439
Franklin	985	19,658	20,643
Garfield	13	9,717	9,730
Grant	2,839	84,354	87,193
Grays Harbor	--	20,350	20,350
Island	--	4,465	4,465
Jefferson	--	67,940	67,940
King	--	32,029	32,029
Kitsap	--	--	--
Kititas	1,150	57,457	58,607
Klickitat	1,158	3,627	4,785
Lewis	--	44,964	44,964
Lincoln	512	15,946	16,458
Mason	--	15,853	15,853
Okanogan	4,772	468,145	472,917
Pacific	--	2,416	2,416
Pend Oreille	--	46,543	46,543
Pierce	--	43,545	43,545
San Juan	--	1,637	1,637
Skagit	--	49,557	49,557
Skamania	--	77,383	77,383
Snohomish	--	60,332	60,332
Spokane	--	--	--
Stevens	659	24,145	24,804
Thurston	--	--	--
Wahkiakum	--	--	--
Walla Walla	--	13,174	13,174
Whatcom	--	80,794	80,794
Whitman	59	8,307	8,366
Yakima	2,225	50,850	53,075
Total	\$ 19,843	\$1,812,262	\$1,832,105

Payment to State of Washington from sale of public domain timber, materials, lands, etc. \$5,715
 Payment to State of Washington from mineral leasing Not Available

Distribution of proceeds to Washington counties and to the State of Washington during fiscal years 1983 and 1984 derived from resource management on lands managed by the Bureau of Land Management in Washington. Revenues are from sales of timber, grazing fees, mineral fees, rental and sales of land, P.I.L.T., and from other sources.

Total payments to counties and State FY1986. \$1,837,820

Administration

Payments to Counties and State, FY 1987 - Washington

Counties	Mineral Leasing ¹	Sec. 15 Grazing Leases	Payments in Lieu of Taxes	Totals
Adams	\$ 5,441	\$ 20	\$ 2,973	\$ 8,434
Asotin	20	500	6,518	7,030
Benton	15,574	427	29,726	45,727
Chelan	640	752	334,845	336,237
Clallam	4,606	--	65,658	70,264
Clark	--	--	374	374
Columbia	264	--	16,321	16,585
Cowlitz	--	--	2,796	2,796
Douglas	2,841	2,692	29,200	34,733
Ferry	--	988	49,406	50,394
Franklin	29,414	1,089	20,188	50,691
Garfield	3,662	8	10,037	13,707
Grant	37,557	1,566	102,857	141,980
Grays Harbor	304	--	23,762	24,066
Island	--	--	5,313	5,313
Jefferson	--	--	70,055	70,055
King	21	--	34,329	34,350
Kitsap	604	--	--	604
Kititas	33,042	1,128	93,086	127,256
Klickitat	12,661	1,154	3,747	17,562
Lewis	991	--	46,716	47,707
Lincoln	7,320	582	16,406	24,308
Mason	--	--	16,355	16,355
Okanogan	295	4,843	384,089	389,227
Pacific	--	--	2,496	2,496
Pend Oreille	--	--	53,613	53,613
Pierce	5,439	--	75,009	80,448
San Juan	--	--	1,686	1,686
Skagit	--	--	51,183	51,183
Skamania	8,998	--	82,082	91,080
Snohomish	--	--	62,652	62,652
Spokane	--	--	--	--
Stevens	--	612	64,132	64,744
Thurston	--	--	--	--
Wahkiakum	--	--	--	--
Walla Walla	3,017	--	13,356	16,373
Whatcom	16,801	--	83,453	100,254
Whitman	654	48	7,510	8,212
Yakima	15,742	2,225	52,811	70,778
Total	\$205,908	\$18,634	\$1,914,740	\$2,139,282

Payment to State of Washington from sale of public domain timber, materials, lands, etc. \$10,096
 Payment to State of Washington from mineral leasing \$205,908

Distribution of proceeds to Washington counties and to the State of Washington derived from resource management on lands managed by the Bureau of Land Management in Washington. Revenues are from sales of timber, grazing fees, mineral fees, rental and sales of land, P.I.L.T., and from other sources.

Total payments to counties and State FY 1987 \$2,149,378

¹Includes proceeds from rental and bonus payments on federally held

Forestry



Burning slash on O&C land after tree harvest.

BLM forestlands in Oregon and Washington are administered under two management programs. One is for the administration of O&C lands in western Oregon; the other for public domain lands which are mostly in eastern Oregon and Washington.

The primary objectives of the O&C program are to manage for a high level and sustained yield output of wood products needed to contribute to the economic stability of the local communities and industries, and to provide for other land uses, such as wildlife

habitat and recreation, including hunting and fishing.

On public domain lands, the Federal Land Policy Act of 1976 requires public lands and resources to be managed under the principles of multiple use and sustained yield, without permanent impairment of the productivity of the land and the quality of the environment, and with recognition of the Nation's need for timber from the public lands.

Forestry

Commercial Forest Land

District	Commercial Forest Land Acres	Withdrawn Forest Land Acres*	Allowable Cut M.bd.ft.
Lakeview	28,000	12,000	1,350
Burns	48,000	700	3,350
Vale	36,000	5,000	3,210
Prineville	70,000	9,000	5,480
Salem	360,000	63,900	246,000
Eugene	307,900	31,200	223,000
Roseburg	402,000	34,500	247,000
Medford	716,100	235,500	213,000
Coos Bay	306,300	58,600	254,000
Oregon Total	2,274,300	450,400	1,196,390
Spokane	38,000	7,000	4,000
Total	2,312,300	457,400	1,200,390

*Land withdrawn from planned timber harvesting for other forest uses such as recreation sites, streamside buffers, scenic zones, and TPCC, but included in commercial forest land totals.

Timber Sales

Volumes and sale prices of timber sold from lands managed by BLM during fiscal year 1986 and fiscal year 1987.

District	FY 1986 Volume		FY 1987 Volume	
	M.bd.ft.	Value	M.bd.ft.	Value
Lakeview	1,759	\$ 284,471	536	\$151,538
Burns	1,139	110,189	--	--
Vale	--	--	2,041	39,424
Prineville	7,860	116,799	12,552	138,966
Salem	249,863	29,261,604	244,428	31,962,161
Eugene	261,574	24,373,228	217,004	28,064,000
Roseburg	317,618	23,228,718	251,993	23,900,276
Medford	409,934	27,404,903	175,247	18,236,307
Coos Bay	344,346	29,729,096	269,088	36,964,418
Oregon Total	1,594,093	134,509,008	1,172,889	139,457,090
Spokane	8,938	430,076	3,961	237,008
Total	1,603,031	134,939,084	1,176,850	139,694,098

Forestry

Timber Harvests

Acreages from which the timber sold during fiscal year 1986 and fiscal year 1987 will be harvested.

District	FY 1986		FY 1987	
	Clearcut Acres	Partialcut Acres	Clearcut Acres	Partialcut Acres
Lakeview	554	808	57	64
Burns	--	257	--	1,160
Vale	--	--	--	--
Prineville	--	1,328	101	661
Salem	3,518	357	3,531	101
Eugene	3,752	774	3,558	362
Roseburg	6,821	1,091	5,527	810
Medford	11,450	6,706	3,904	7,656
Coos Bay	5,224	35	4,468	54
Oregon Total	31,319	11,356	21,146	10,868
Spokane	99	688	115	499
Total	31,418	12,044	21,261	11,367

Timber - 1987 Harvested Volume (M. bd. ft.)

Western Oregon		Eastern Oregon and Washington	
Salem	257,370	Lakeview	5
Eugene	243,036	Burns	9,708
Roseburg	273,014	Vale	3,645
Coos Bay	257,414	Prineville	11,794
Medford	238,037	Spokane	7,562
Total	1,268,871	Total	32,714

Western Oregon Commercial Forest Acres With No Planned Timber Harvest

Reservation	Acres	Allowable Cut Impact MMBF
TPCC (fragile sites, etc.)	302,500	214
Bald Eagles	3,200	2
ACEC, RNA, ONA, cultural and botanical sites	7,200	5
Riparian Zones	58,300	41
Recreation Management	2,400	2
Older Forest Retention Areas (raptor habitat, etc.)	46,300	33
Totals	419,900	297

Forestry

Timber Trespasses

District	FY 1986		FY 1987	
	No. of Cases	Collections	No. of Cases	Collections
Lakeview	--	--	--	\$ --
Burns	--	--	--	--
Vale	1	26.00	--	--
Prineville	1	158.00	--	--
Salem	14	70,399.83	--	--
Eugene	17	17,871.67	13	11,278.50
Roseburg	14	42,321.26	17	18,652.20
Medford	24	31,705.83	25	41,289.99
Coos Bay	21	11,757.83	13	16,885.86
Oregon Total	92	174,240.42	68	88,106.55
Spokane	--	--	3	1,886.68
Total	92	\$174,240.42	71	\$89,993.23

Minor Forest Products Sales

Item and Unit	FY 1986		FY 1987	
	Quantity	Value	Quantity	Value
Fuelwood, board feet	*	\$117,783	12,449,448	\$120,590
Bolts and shakes, board feet	*	26,154	308,440	18,876
Small poles, board feet	*	459	30,400	248
Large poles, board feet	*	--	10,105	344
Corral poles, board feet	*	415	175,668	823
Posts, board feet	*	52	39,613	1,615
Split rails, board feet	*	2,946	4,797	163
Mine timbers, board feet	*	482	120	54
Pulpwood, board feet	*	--	212,000	2,044
Cascara bark, pounds	2,030	3,376	2,800	78
Boughs, pounds	7,230	150	424,509	31,160
Ferns, bunches	203,038	6,600	16,157	688
Cones, bushels	11,385	381	580	142
Huckleberry brush, bunches	1,523	100	25,451	1,184
Christmas trees, each	16,490	685	2,878	6,139
Wildings, each	5,005	8,181	2,937	277
Moss, pounds	68,502	1,554	26,498	483
Arrow stock, board feet	25,866	580	57,890	2,893
Greens, bunches	*	--	193	105
Total	9,627	\$170,091		\$187,906

*Shown in different units in previous years (see page 15, BLM Facts, 1986).

Forestry

Forest Development - I

Reforestation work in site preparation, planting, and seeding on commercial forest land is tabulated here. Natural seeding is not included.

FY 1986

District	Site Preparation Acres	Planting Acres
Lakeview	380	--
Burns	--	266
Vale	50	21
Prineville	900	--
Salem	2,497	4,317
Eugene	2,709	3,930
Roseburg	3,773	3,886
Medford	5,555	8,378
Coos Bay	2,436	3,076
Oregon Total	18,300	23,874
Spokane	--	191
Total	18,300	24,065

FY 1987

District	Site Preparation Acres	Planting Acres
Lakeview	450	40
Burns	--	--
Vale	--	--
Prineville	--	--
Salem	3,416	3,956
Eugene	2,684	3,637
Roseburg	3,282	4,913
Medford	6,571	11,027
Coos Bay	2,408	4,141
Oregon Total	18,811	27,714
Spokane	--	--
Total	18,811	27,714

Forestry

Forest Development - II

Reforestation treatments made to protect unestablished stands from animals, insects, and disease are tabulated under "Protection." Reforestation treatments made to release unestablished stands from competing vegetation are tabulated under "Release."

FY 1986

District	Protection Acres	Release Acres	Protection and Release Acres
Lakeview	--	--	--
Burns	--	--	--
Vale	--	--	--
Prineville	--	--	--
Salem	391	1,747	2,138
Eugene	2,676	1,352	4,028
Roseburg	2,210	--	2,210
Medford	4,810	65	1,714
Coos Bay	2,600	1,153	4,070
Oregon Total	12,687	4,317	14,160
Spokane	--	--	--
Total	12,687	4,317	14,160

FY 1987

District	Protection Acres	Release Acres	Protection and Release Acres
Lakeview	--	--	--
Burns	--	--	--
Vale	--	--	--
Prineville	--	--	--
Salem	257	2,797	3,054
Eugene	4,518	127	4,645
Roseburg	1,964	181	2,145
Medford	3,948	--	3,948
Coos Bay	3,283	1,206	4,489
Oregon Total	13,970	4,311	18,281
Spokane	--	--	--
Total	13,970	4,311	18,281

Forestry

Forest Development - III

Fertilization and thinning accomplishments on commercial forest land are tabulated below. The "Tree Improvement" column reports acres seeded or planted with genetically improved seed or seedlings. "Tree Improvement" acres are included in the "Forest Development - I" Table.

FY 1986

District	Fertilization Acres	Improvement Acres	Thinning	
			Precommercial Acres	Commercial Acres
Lakeview	--	--	--	--
Burns	--	--	--	--
Vale	--	--	--	--
Prineville	--	--	118	--
Salem	--	--	--	73
Eugene	--	--	--	645
Roseburg	4,538	--	592	--
Medford	6,030	--	--	1,212
Coos Bay	--	--	--	--
Oregon Total	10,568	--	710	1,930
Spokane	--	--	--	--
Total	10,568	--	710	1,930

FY 1987

District	Fertilization Acres	Improvement Acres	Thinning	
			Precommercial Acres	Commercial Acres
Lakeview	--	--	10	80
Burns	--	--	--	--
Vale	--	--	--	--
Prineville	--	--	--	--
Salem	--	--	--	292
Eugene	--	--	--	580
Roseburg	--	--	--	37
Medford	--	232	--	46
Coos Bay	--	470	--	--
Oregon Total	--	702	10	1,035
Spokane	--	--	--	--
Total	--	702	10	1,035

Wild Horse and Burro Program

Comprehensive herd management area plans have been developed for wild horse management areas. Such plans describe range conditions, consider present and planned population levels, specify how water and forage are to be made available, and determine what measures will be taken to provide for other uses.

The goal is to maintain wild horse population levels in balance with the carrying capacity of the land and with habitat requirements for wildlife and livestock. This protects the environment for all uses. To accomplish this, excess wild horses are periodically rounded up and made available for adoption.

Wild Horse Management

	Horses Removed From the Range 10/01/86-9/30/87	Horses on Range the Range 9/30/87	Levels to be Maintained
Lakeview	233	312	160-360
Burns	457	876	426-788
Vale	237	1,208	714-1,392
Medford	--	36	25-50
Forest Service	--	--	--
Totals	927¹	2,549²	1,325-2,590

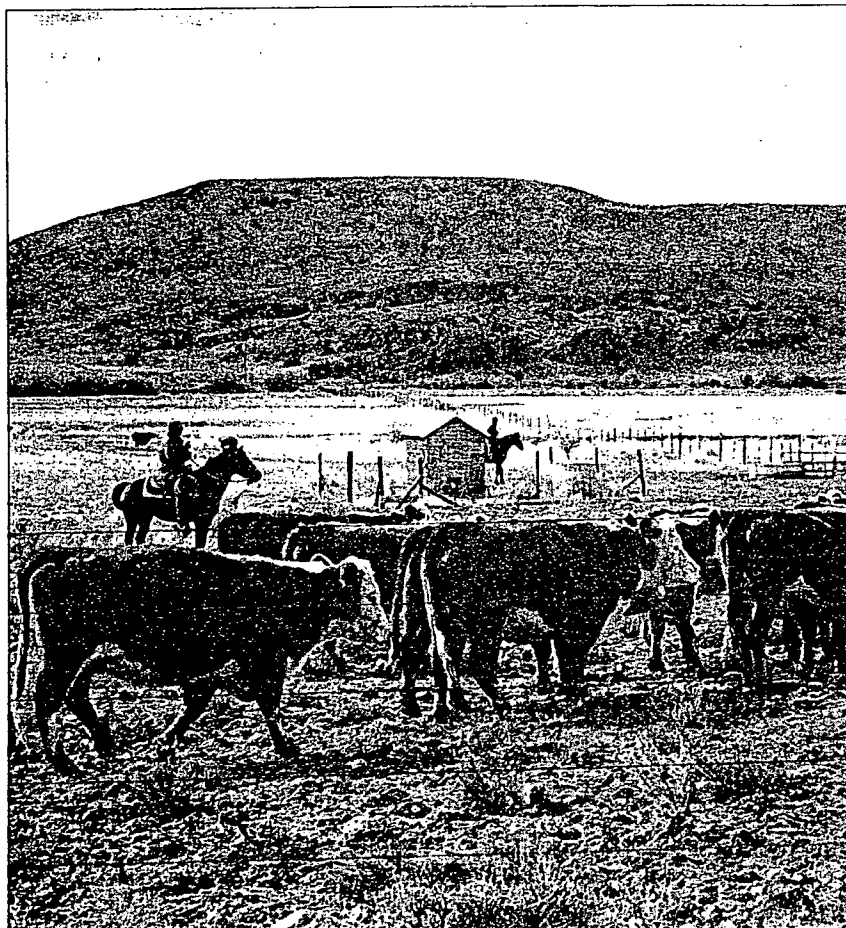
¹10 horses were gathered from outside designated herd management areas.
²Includes 117 horses outside designated herd management areas.

Summary FY 1987

In corral 10/01/86	147 horses, 1 burro
Gathered	927 horses
Born in corral	10 horses
Shipped into Oregon (gathered in other states)	54 horses, 82 burros
Adopted	91 horses, 82 burros ³
Repossessed	4 horses, 2 burros
Died or destroyed	77 horses, 2 burros
Returned to range	79 horses
To holding centers	726 horses
In corral 09/30/87	169 horses, 1 burro

³Burros were not gathered in Oregon. They were brought in from other states for adoption.

Rangelands



Corralling cattle in the Vale District.

BLM in Oregon and Washington manages land grazed by livestock under permits and leases. Ranchers pay grazing fees for the privilege of using BLM rangelands. Rangeland uses are based on resource management plans which consider all resource values and establish priorities. The plans help identify the grazing allotments where investments in management will result in the greatest returns.

Various types of range improvements facilitate livestock management, increase the productivity of the land, and protect environmental quality. These include developing water sources for livestock and wildlife; constructing fences, cattle guards, and roads; rotating the use of pastures to promote healthy forage growth; controlling brush; and revegetating burned or depleted areas.

Rangelands

Livestock Grazing

Grazing use is tabulated for grazing fee year 1986 (March 1, 1986-February 28, 1987). During 1985, the grazing fee for all BLM lands was \$1.35 per AUM. ¹

District	Permits & Leases	Cattle	Horses	Sheep	AUMs
Lakeview					
Permits	91	37,715	105	—	156,801
Leases	62	1,535	20	488	4,234
Bums					
Permits	169	54,652	76	40	210,162
Leases	143	3,258	34	34	18,556
Vale					
Permits	379	82,957	368	7,125	417,087
Leases	110	1,035	1	332	4,178
Prineville					
Permits	124	21,141	67	—	85,786
Leases	220	3,076	44	1,015	17,758
Eugene					
Leases	8	115	—	—	558
Roseburg					
Leases	16	135	6	20	810
Medford					
Leases	129	3,933	—	226	12,802
Coos Bay					
Leases	6	7	—	1	41
Oregon Total	1,457	209,559	721	9,281	928,773
Spokane					
Leases	363	6,370	137	195	26,921
Total	1,820	215,929	858	9,476	955,694

Above figures do not include numbers authorized by Exchange of Use Agreement.

¹An AUM (animal unit month) is the forage required to sustain one cow (or its equivalent) for one month.

Grazing use totals during grazing fee year 1985 were:

State	Permits & Leases	Cattle & Horses	Sheep	AUMs
Oregon	1,467	234,091	8,874	1,019,565
Washington	361	9,504	195	30,499
Total	1,828	243,595	9,069	1,050,064

Rangelands

Resource Development and Conservation

Major watershed conservation and range improvement jobs are tabulated here. Other accomplishments include preparation of watershed management plans, soil stabilization, and water control.

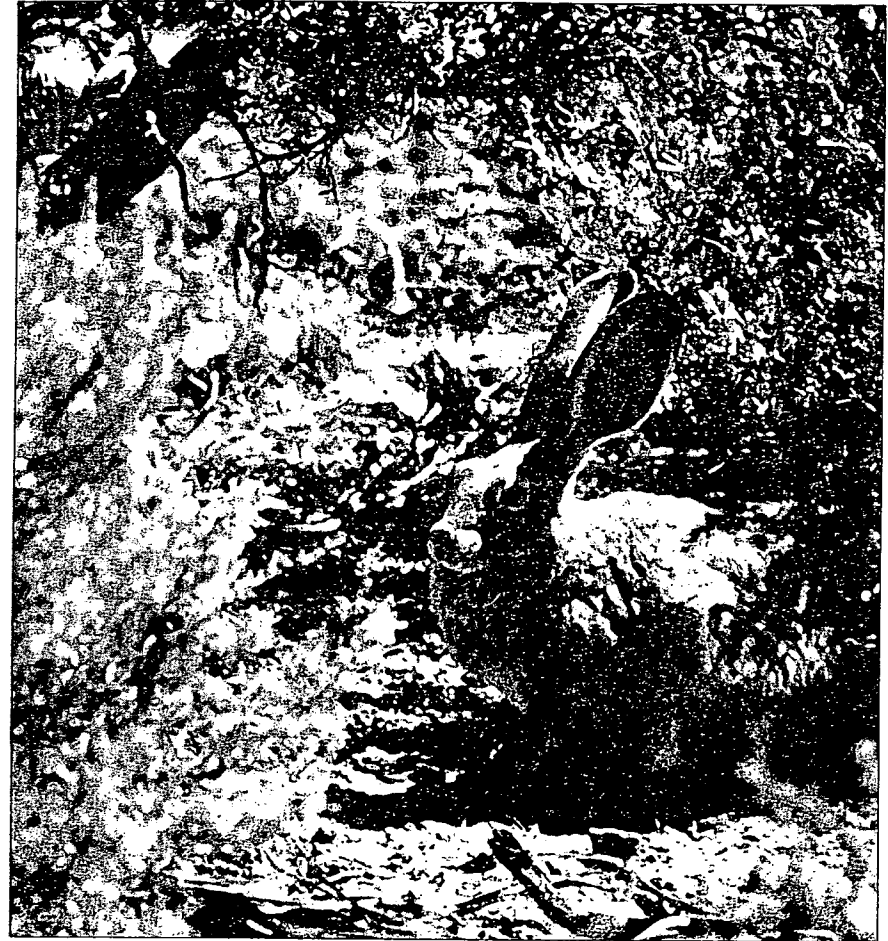
FY 1987

District	Vegetation Manipulation Acres	Grass Seeding Acres	Juniper Mgmt Acres	Fencing Miles	Cattle Guards Number	Pipe line Miles	Number Reservoirs	Number Springs	Number Wells
Lakeview	820	820	—	—	—	1.3	—	—	—
Burns	1,800	1,800	—	20.6	4	—	2	1	—
Vale	2,500	2,500	—	18.3	4	1.7	1	1	—
Prineville	2,000	2,000	2,180	4.5	—	13.6	2	1	—
Roseburg	—	—	—	—	—	—	—	—	—
Medford	—	—	—	3.2	1	—	—	3	—
Coos Bay	—	—	—	—	—	—	—	—	—
Oregon Total	7,120	7,120	2,180	46.6	9	18.6	5	6	—
Spokane	32	32	—	2.5	3	2.0	—	—	—
Ore-Wash Total	7,152	7,152	2,180	49.1	12	18.6	5	6	—

FY 1986

District	Vegetation Manipulation Acres	Grass Seeding Acres	Juniper Mgmt Acres	Fencing Miles	Cattle Guards Number	Pipe-line Miles	Number Reservoirs	Number Springs	Number Wells
Lakeview	365	365	—	28.0	3	9.6	—	—	—
Burns	2,750	2,750	—	10.8	2	5.7	6	1	3
Vale	425	425	—	10.7	9	—	—	—	—
Prineville	6,900	—	—	3.2	—	—	—	—	—
Roseburg	—	—	—	—	—	—	—	—	—
Medford	13	—	—	—	—	—	—	—	—
Coos Bay	—	—	—	—	—	—	—	—	—
Oregon Total	10,453	3,548	—	52.7	14	15.3	6	1	3
Spokane	—	—	—	6.6	1	—	—	9	—
Ore-Wash Total	10,453	3,548	—	59.3	15	15.3	6	10	3

Wildlife Habitat



The jackrabbit is only one of many species that lives in the sagebrush community.

Nearly all BLM-managed lands provide habitat for a diversity of fish and wildlife species. Therefore, in developing resource management plans it is necessary to recognize fish and wildlife needs in achieving a suitable balance among the various land uses. Special attention also is given to the habitats of endangered or threatened and migratory species.

BLM cooperates closely with state wildlife management agencies in improving habitat conditions, restoring animal populations, providing forage and water, and managing habitats to attain appropriate wildlife populations levels. BLM also welcomes the cooperation of wildlife groups, sports clubs, and others interested in wildlife habitat management.

Wildlife Habitat

Big Game Population Estimates

Big game animals which used lands managed by BLM during fiscal year 1987.

District	Pronghorn Antelope	Deer	Elk	Bighorn Sheep	Mountain Goats	Black Bear	Cougar
Lakeview	3,000	21,000	100	100	--	10	6
Burns	4,000	32,400	900	440	--	15	10
Vale	5,350	42,500	6,100	470	7	80	35
Prineville	1,600	22,000	200	50	--	50	5
Salem	--	19,000	2,400	--	--	230	20
Eugene	--	18,600	590	--	--	340	25
Roseburg	--	16,600	660	--	--	90	15
Medford	--	25,000	1,000	--	--	900	50
Coos Bay	--	15,000	2,250	--	--	200	50
Oregon Total	13,950	212,100	14,200	1,060	7	1,915	216
Spokane	--	20,500	50	100	75	200	10
Total	13,950	232,600	14,250	1,160	82	2,115	226

Wildlife Habitat on BLM Lands

As of 9/30/87.

District	Big Game Acres	Small Game Acres	Waterfowl Acres	Fishable Streams Miles
Lakeview	2,505,000	2,000,000	30,000	51
Burns	3,288,000	2,492,000	17,000	231
Vale	3,153,000	4,260,000	11,000	600
Prineville	1,260,000	1,446,000	10,000	365
Salem	405,000	405,000	15,000	620
Eugene	318,000	300,000	22	350
Roseburg	424,000	424,000	--	270
Medford	910,000	910,000	2,000	540
Coos Bay	280,000	300,000	100	344
Oregon Total	12,543,000	12,537,000	85,122	3,371
Spokane	308,000	307,000	4,000	120
Total	12,851,000	12,844,000	89,122	3,491

Wildlife Habitat

Wildlife Habitat Improvement

District	Brush Control Acres		Grass/Legume Seeding, Acres		Fencing Miles		Water Development Number		Other Wildlife Improvements	
	1986	1987	1986	1987	1986	1987	1986	1987	1986	1987
Lakeview	500 ¹	670 ¹	500	300	7	5	--	4	1,200 ²	21
Burns	--	--	130	100	--	8	1	4	1 ²	--
Vale	--	--	--	--	12	7	6	--	--	6
Prineville	--	100 ¹	--	--	2	1	15	15	--	1
Salem	--	--	--	--	--	--	--	--	--	--
Eugene	--	--	--	46	--	--	--	1	--	--
Roseburg	--	--	--	--	--	--	--	--	--	--
Medford	40 ¹	--	40	--	--	--	--	--	--	2
Coos Bay	--	--	--	700	--	--	--	--	--	--
Oregon Total	540	770	670	1,146	21	21	22	24	1,201	30
Spokane	--	--	--	--	4	5	22	1	135 ¹	6
Total	540	770	670	1,146	25	26	44	25	1,336	36

¹Prescribed Burn
²Artificial nest boxes

Aquatic Habitat Improvement¹

District	Stream ² Clearance Miles		Spawning ³ and/or Rearing Area Miles		Improved ⁴ Fish Passage Miles		Instream Structures Number		Reservoirs Acres	
	1986	1987	1986	1987	1986	1987	1986	1987	1986	1987
Lakeview	--	--	--	--	--	--	--	--	--	--
Burns	--	--	--	--	--	--	1,500	--	20	--
Vale	--	--	--	--	--	--	--	30	--	--
Prineville	--	--	--	--	--	--	--	3	--	--
Salem	--	--	5.5	3.0	--	--	351	264	--	--
Eugene	--	--	7.2	4.0	8.0	--	--	150	--	--
Roseburg	--	--	1.0	1.0	--	--	31	30	--	--
Medford	0.5	--	1.5	--	--	--	58	35	--	--
Coos Bay	--	--	2.5	--	--	--	120	33	--	--
Oregon Total	0.5	--	17.7	8.0	8.0	--	2,060	545	20	--
Spokane	--	--	--	--	--	--	6	2	--	--
Total	0.5	--	17.7	8.0	8.0	--	2,066	547	20	--

¹Miles refer to number of stream miles where fish production will be increased by the projects.

²Removal of debris jams.

³Includes fish passage over waterfalls and dams and through culverts.

⁴Includes new projects and improvement of existing water.

Recreation

Diversity prevails in outdoor recreation on the lands managed by BLM. Most popular of all is enjoying the scenery of the wide open spaces, while other activities include picnicking, camping, hunting, fishing, swimming, boating, hiking, horseback riding, rockhounding, studying nature and taking photographs.

BLM provides recreation sites with picnicking and camping facilities in many popular locations, while natural conditions are preserved in wilderness areas. In between, there is plenty of room to roam while enjoying recreational pursuits. Fees are required at certain recreation sites, competitive events, and for commercial activities.

Recreation Management

District	Developed Sites ¹			Semi-Developed ² Sites	Undeveloped ³ Sites	Special Recreation Use Permits		
	Number	Camp	Units Picnic Fees			Number	Fees	
Lakeview	1	50	2	\$ 1,899	--	11	4	\$ 53
Burns	2	36	11	--	2	4	8	840
Prineville	3	148	32	5,000	4	--	115	31,802
Vale	2	30	6	--	9	15	42	7,300
Salem	15	160	221	21,867	--	1	3	387
Eugene	3	50	35	12,785	1	1	--	--
Roseburg	6	91	62	14,508	2	2	--	--
Medford	6	108	38	15,705	5	39	116	68,800
Coos Bay	5	82	40	36,612	2	--	--	--
Oregon Total	43	755	447	108,376	25	73	288	109,182
Spokane	--	--	--	--	5	--	11	--
Total	43	755	447	\$108,376	30	73	299	109,182

¹ Sites which fully meet fee collection criteria set forth in Section 4(b) of the Land and Water Conservation Fund Act, whether or not fees were collected.

² Sites which fail to meet one or more of the critical criteria for fee collection in Section 4(b) of the Land and Water Conservation Fund Act.

³ Sites with some combination of sanitary facilities, water, fire containment, garbage cans or tables, which represent some type of management or maintenance commitment.

Recreation

Estimated Recreation Visits to BLM Lands¹

Use	Fiscal Year 1987	
	Oregon	Washington
Off-road vehicle travel	275,900	1,400
Other motorized travel ²	626,100	100
Non-motorized travel ³	199,700	700
Camping	656,300	5,200
Hunting	629,900	800
Fishing	928,900	1,300
Boating	593,500	35,000
Winter sports	78,800	0
Other ⁴	678,700	3,200
Total	4,667,800	47,700

¹ A visit to BLM administered land and/or water by a person for the purpose of engaging in recreation activities, whether for a few minutes, full day, or more.

² Includes recreation related driving for pleasure.

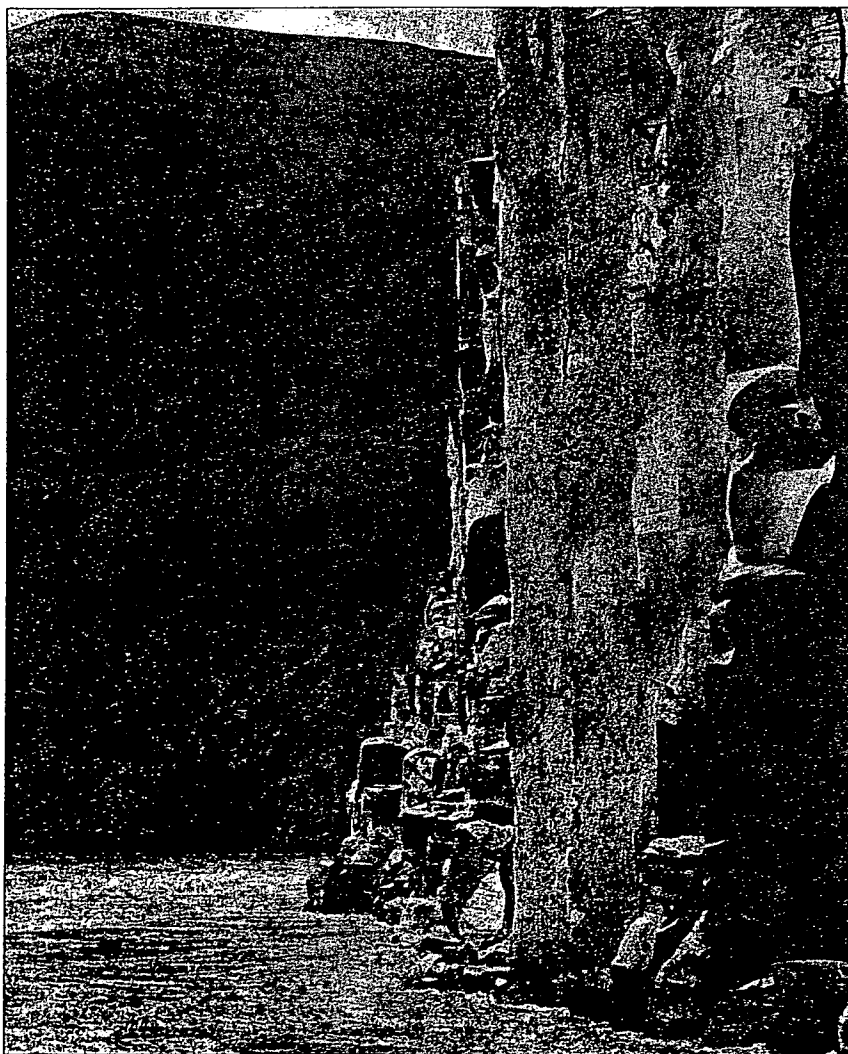
³ Includes bicycling, horseback riding, backpacking, hiking and walking for pleasure.

⁴ Includes sightseeing and water related activities outside of boating (swimming, etc.).

Wilderness

Oregon has 1 BLM-managed wilderness area, Table Rock (approximately 5,500 acres), and 92 wilderness study areas (including 5 instant study areas) totalling 2.8 million acres.

Washington has 1 BLM-managed wilderness area, Juniper Dunes (approximately 7,140 acres), and 1 wilderness study area totalling 5,500 acres.



The John Day River near Cordwood Canyon, Thirtymile Wilderness Study Area, Prineville District.

Minerals and Energy

BLM is responsible for administering minerals management laws on all Federal lands and also on other lands where mineral rights have been retained by the United States. BLM also assists the Bureau of Indian Affairs in supervising minerals management on Indian lands. BLM issues mineral leases, regulates exploration and production, maintains records of mining claims and administers sales of common minerals. Operators' plans are reviewed to ensure conservation of mineral resources and protection of other resource values.

Operations and rehabilitation of mined and drilled areas are monitored.

The minerals and energy resource management programs continue to gain visibility in Oregon and Washington. BLM is responsible for approximately 56 million acres of Federal minerals in the two states. Of that acreage, about 6.9 million acres are currently leased for oil and gas, 620,000 for geothermal resources and 5,700 acres for coal. Approximately 82,600 mining claims have been filed for hard rock minerals such as gold and silver, of these 55,300 are active.

Number of Mining Claim Recordations (all Public Lands)

Claims: 46,689
Annual Filings: 6,135

Number of Claim Notices and Plans of Operations

BLM & Forest Service: 151

Value of Mineral Material Production:

\$217,813

Solid Mineral Leases

Coal: 5
Uranium (Indian Lands): 3
Mineral Materials (Indian Lands): 7

Leasable Minerals Operations

Activity	State	
	Oregon	Washington
Oil and Gas		
Exploration Permits	—	46
Miles of Seismic Survey	—	52
No. of Wells Drilled	—	—
Total Footage Drilled	—	—
Geothermal		
No. of Wells Drilled	8 ¹	—
Total Footage Drilled	24,136 ²	—
No. of Unit Agreements	3 ³	—

¹Includes holes drilled and completed in FY 1987, but may have been started in FY 1986.

²Total footage, all holes.

³Units in effect October 31, 1987. They total about 260,400 acres within 142 leases

Minerals and Energy

Minerals

Item	Oregon		Washington	
	FY 1986	FY 1987	FY 1986	FY 1987
Mineral Patents Issued	1	--	--	--
Coal Leases Issued, Acres	--	--	--	--
Coal Leases in Force, Acres	5,430	5,430	321	321
Oil & Gas Leases Issued, Acres	269,294	49,933	13,905	35,275
Oil & Gas Leases in Force, Acres	2,044,772	814,959	928,824	721,940

Geothermal Leases in Effect September 30, 1987

	Number	Acreage	Number	Acreage	
Oregon Forest Service	252	467,064	Washington FS	47	73,263
Oregon BLM	26	42,877	Washington BLM	—	—
Total Oregon	278	509,941	Total Washington	47	73,263

Federal Lands Available for Mining and Mineral Leasing As of 9-30-87.

	Oregon		Washington	
	Acres Open	Acres Closed	Acres Open	Acres Closed
Location and Entry Under the Mining Laws ¹	28,900,000	4,700,000	6,330,000	5,300,000
Application and Offer Under the Mineral Leasing Laws ^{1,2}	32,530,000	3,310,000	7,990,000	5,000,000

¹ Acreage includes Federal subsurface ownership where surface is not owned by the United States.

² Acreage includes acquired lands.

Support

There are a wide variety of support activities including programs in engineering design and construction, cadastral survey, cartography, fire management and control, unauthorized use prevention, road and recreation site maintenance, access acquisition, land

and mineral appraisal, lands and mineral case adjudication, land status records, and mining claim recordation. Public land records are maintained and information is provided about the land records and public land laws and mineral laws.

Fire

BLM's electronic lightning detection system instantly plots cloud-to-ground lightning strikes, thus permitting prompt suppression of lightning-caused fires. On the other hand, prescribed burning

enhances wildlife habitat, improves range forage mixes, improves watersheds, and removes timber harvest residues to avoid wildfires and simplify reforestation.

Fire Statistical Summary

Number of fires and acres burned on lands managed by the Bureau of Land Management in Oregon and Washington during 1987.

	Number of Human-caused Fires	Acres Burned	Number of Lightning Fires	Acres Burned	Total Number Fires	Total Acres Burned
Lakeview	8	657	99	5,200	107	5,857
Burns	11	378	44	4,821	55	5,199
Vale	39	7,091	28	2,455	67	9,546
Prineville	20	240	98	2,085	118	2,325
Salem	3	1	1	1	4	2
Eugene	1	39	1	10	2	49
Roseburg	20	4,445	9	6,997	29	11,442
Medford	14	161	117	36,901	131	37,062
Coos Bay	7	48	1	60	8	108
Oregon Total	123	13,060	398	58,530	521	71,590
Spokane	10	4,523	3	56	13	4,579
Total	133	17,583	401	58,586	534	76,169

Average Number of Fires Annually During Five Years, 1982-1986

Human-caused - 119

Lightning-caused - 268

Acres burned - 215,168

Total fires for 5 years - 1,938

Average Number of Fires Annually During Ten Years, 1977-1986

Human-caused - 123

Lightning-caused - 266

Acres burned - 134,713

Total fires for 10 years - 3,894

Support

Numbers of Fires by Size Class During 1987

Size Class	Number
A (0-.25 acres)	299
B (.26-9 acres)	111
C (10-99 acres)	52
D (100-299 acres)	21
E and larger (300 acres and over)	51
False Alarms	48

Prescribed Fire Statistical Summary

	Prescribed Fires	Forestry Site Prep	Wildlife	Hazard Reduct.	Water- Range shed	Other	Total Acres	Emerg. Number	Fires Acres
Eastern Oregon & Washington									
Lakeview	9	32	--	450	--	--	482	--	--
Burns	2	--	300	--	15	--	315	--	--
Vale	4	49	--	--	4,700	--	4,749	--	--
Prineville	2	--	--	--	1,000	1,000	2,000	--	--
Spokane	1	5	--	--	--	--	5	--	--
Total	18	86	300	450	5,715	1,000	7,551	--	--
Western Oregon									
Salem	110	3,295	--	--	--	--	3,295	3	1
Eugene	59	1,935	--	--	--	--	1,935	--	--
Roseburg	104	2,900	--	--	--	--	2,900	5	45
Medford	197	4,532	--	--	--	--	4,532	2	84
Coos Bay	107	3,530	--	--	--	--	3,530	6	48
Total	577	16,192	--	--	--	--	16,192	16	178
Oregon & Washington									
Total	595	16,278	300	450	5,715	1,000	23,743	16	178

Support

Roads

The mileage of the BLM road transportation system in Oregon as of 9/30/87 totaled 26,409—16,867 miles in western Oregon and 9,542 miles in eastern Oregon.

miles, western Oregon 797 miles, total 1,109 miles—since funding has not been appropriated for road construction. No appropriated fund roads have been constructed in Washington.

Appropriated-fund-constructed mileage has remained the same for the past several years—eastern Oregon 312

Timber sale contract mileage is shown on the table below.

Roads Constructed

District	Miles Built Under Timber Sale Contracts		
	FY 1986	FY 1987	Total to 9/30/87
Lakeview	0.7	1.5	51.4
Burns	3.1	0.0	157.3
Vale	0.0	0.0	112.8
Prineville	0.0	5.0	178.0
Total, Eastern Oregon	3.8	6.5	499.5
Salem	23.1	17.5	1,056.9
Eugene	27.8	35.2	1,623.5
Roseburg	77.4	62.5	2,113.0
Medford	37.1	81.1	3,649.5
Coos Bay	20.1	29.7	1,302.5
Total, Western Oregon	185.5	226.0	9,745.4
Oregon Total	189.3	232.5	10,244.9
Spokane	0.3	3.8	6.4
Total	189.6	236.3	10,251.3

Rights of Way

Right of way permits issued by the Oregon State Office during the 1986 and 1987 fiscal years. (Does not include permits for logging roads in western Oregon.)

Kind	Oregon		Washington	
	FY 1986	FY 1987	FY 1986	FY 1987
Energy Related ¹	12	13	3	2
Non-energy Related ²	79	86	16	8
Total	91	99	19	10

¹Includes electric transmission lines and oil and gas pipelines.

²Includes telephone and telegraph lines, communication sites, water pipelines, roads, highways, material sites, etc.

Support

Roads Maintained

The Bureau of Land Management maintained 6,250 miles of road in western Oregon and 680 miles in eastern Oregon during Fiscal Year 1987. An additional 3,500 miles were maintained by timber purchasers or under agreements with counties or timber companies.

Road Right of Way Permits and Agreements

Right of way permits issued for logging, and reciprocal right of way and road use agreements signed.

District	Permits Issued		Agreements Signed	
	FY 1986	FY 1987	FY 1986	FY 1987
Lakeview	--	--	--	--
Burns	--	4	--	--
Vale	--	--	--	--
Prineville	12	--	3	--
Salem	13	15	--	--
Eugene	5	16	--	1
Roseburg	6	11	--	1
Medford	52	29	3	2
Coos Bay	10	10	--	--
Oregon Total	98	85	6	4
Spokane	2	1	--	--
Total	100	86	6	4

Road Right of Way Easements and Lands Acquired

District	FY 1986		FY 1987	
	Direct Purchase	Eminent Domain	Direct Purchase	Eminent Domain
Lakeview	2	--	9	--
Burns	--	--	--	--
Vale	--	--	3	--
Prineville	--	--	--	--
Salem	2	--	3	--
Eugene	5	--	8	--
Roseburg	9	--	20	--
Medford	13	--	7	1
Coos Bay	5	--	4	--
Spokane	--	--	--	--
Total	36	--	54	1

Support

Other Acquisitions

District	FY 1986		FY 1987	
	Direct Purchase	Eminent Domain	Direct Purchase	Eminent Domain
Burns - Steens Mtn. Rec. Area	3	--	1	--
Spokane - Juniper Dunes Wilderness Riparian Habitat	--	--	1	--
Vale - Owyhee Wild and Scenic River	--	--	1	--
Total	3	--	4	--

Lands

The Lands program includes the processing of lands and minerals application (casework) from other Federal agencies, state and local governments, and private individuals. This includes field examination, classification and issuance of land use decisions, title conveyances, leases, permits, rights-of-way, withdrawals and withdrawal review. It also provides for maintenance of public records in Oregon and Washington, issuance of public land status, and information about the public land and minerals laws.

Withdrawal Review Recommendations

	Reviewed in FY 1987					
	Revoke		Continue		Totals	
	No.	Acres	No.	Acres	No.	Acres
Oregon						
Withdrawals	19	37,373	12	8,291	31	45,664
Land Classifications	--	--	--	--	--	--
Washington						
Withdrawals	32	24,136	9	1,394	41	25,530
Land Classifications	--	--	--	--	--	--
Total	51	61,509	21	9,685	72	71,194

	Total Reviewed Since October 21, 1976					
	Revoke		Continue		Totals	
	No.	Acres	No.	Acres	No.	Acres
Oregon						
Withdrawals	385	909,275	96	410,522	481	1,319,797
Land Classifications	87	9,544,120	61	3,893,612	148	13,437,732
Washington						
Withdrawals	207	856,238	41	5,471	248	861,709
Land Classifications	18	24,379	19	1,690	37	26,069
Total	697	11,334,012	217	4,311,295	914	15,645,307

Support

Lands Transferred Between BLM and Other Federal Agencies

	FY 1986 Acres	FY 1987 Acres
Oregon		
Jurisdiction Transferred to BLM	1,440	--
Jurisdiction Transferred from BLM	--	1,338
Washington		
Jurisdiction Transferred to BLM	--	--
Jurisdiction Transferred from BLM	--	1,708

Land Leases

In effect 9-30-86.

Kind	Oregon		Washington	
	Number	Acres	Number	Acres
Recreation & Public Purposes Act	59	4,147	13	1,885
Airport	6	303	--	--
Mining Claim Occupancy Act	9	35	--	--
Public Works	1	4	1	1
Communication Site	1	1	--	--
Sec. 302 FLPMA Leases, Permits and Easements	170	153,286	3	52
Total	246	157,776	17	1,938

Land Leases

In effect 9-30-87.

Kind	Oregon		Washington	
	Number	Acres	Number	Acres
Recreation & Public Purposes Act	46	3,242	12	1,877
Small Tract	4	4	--	--
Airport	4	197	--	--
Mining Claim Occupancy Act	8	15	--	--
Public Works	1	4	1	1
Communication Site	1	1	--	--
Sec. 302 FLPMA Leases, Permits and Easements	100	32,816	3	52
Total	164	36,279	16	1,930

Support

Surveys

Cadastral surveys are performed to create, mark and define, or to retrace the boundaries between adjoining lands and, more particularly, between land of the federal government and private owners or

local governments. The Bureau of Land Management is the only agency that is authorized to determine the boundaries of the public lands of the United States.

Public Land Surveys

Kind	FY 1986		FY 1987	
	Oregon	Washington	Oregon	Washington
Miles of Line Retraced or Surveyed	608	145	622	210
Corners Monumented	1,168	208	972	436
Plats Accepted	47	20	65	16

Lands Received by BLM

	FY 1986	FY 1987
	Acres	Acres
Oregon		
Exchanges	14,122	22,225
Reconveyance of Recreation & Public Purposes Act Land	--	--
Acquisitions in Fee	2,065	5,500
Total	16,187	27,725

Washington

Exchanges	--	--
Reconveyance of Recreation & Public Purposes Act Land	--	--
Acquisition in Fee	--	435
Total	80	435
Grand Total	16,267	28,160

Support

Land Patents Issued

Kind of Patent	FY 1986		FY 1987	
	No.	Acres	No.	Acres
Oregon - BLM				
Public Sale	10	427	12	1,293
Recreation & Public Purposes Act	--	--	--	--
Exchange	9	13,554	7	5,494
Railroad Grant	--	--	--	--
Mining Claim Patent	1	20	--	--
Color of Title Patent	--	--	--	--
Airport Conveyance Patent	--	--	1	160
Act of Congress Patent (PL 98-137)	--	--	--	--
Conveyance of Federally Owned Minerals	--	--	--	--
Supplemental Exchange Patent	--	--	--	--
Total	20	14,001	20	6,947
Oregon - Other Agency				
Indian Fee Patents	--	--	27	1,293
National Forest Exchange	3	4,915	6	10,953
Reclamation Sale	--	--	1	40
Wildlife Refuge Exchange	--	--	--	--
Cumulative Forest Exchange	1	2,598	--	--
Total	4	7,513	34	12,286
Washington - BLM				
Exchange	--	--	--	--
Public Sale	5	77	--	--
Townsite Patent	--	--	--	--
Mining Claim Patent	--	--	--	--
Airport Conveyance Patent	--	--	--	--
Recreation & Public Purposes Act	4	41	1	--
State Lieu Selection Clear List	--	--	--	--
State Quantity Grant Clear List	--	--	--	--
Railroad Grant	1	7	2	193
Conveyance of Federally Owned Minerals	1	5,655	7	3,012
Confirmatory Patent for State Grants	2	70,887	8	120,593
Color of Title Patent	1	31	--	--
Supplemental Sale Patent	--	--	1	40
Total	14	76,698	19	123,838
Washington - Other Agency				
Indian Fee and Re-issue Trust	14	704	8	413
National Forest Exchange	5	10,882	6	13,058
Corrective Forest Homestead Patent	1	80	--	--
Cumulative Indian Fee	--	--	--	--
Total	20	11,666	14	13,471
Total - BLM	34	90,699	39	130,785
Total - Other Agency	24	19,179	48	25,757

As the Nation's principal conservation agency, the Department of the Interior has responsibility for most of our nationally owned public lands and natural resources. This includes fostering the wisest use of our land and water resources, protecting our fish and wildlife, preserving the environmental and cultural values of our national parks and historical places, and providing for the enjoyment of life through outdoor recreation. The Department assesses our energy and mineral resources and works to assure that their development is in the best interests of all our people. The Department also has a major responsibility for American Indian reservation communities and for people who live in Island Territories under United States Administration.

