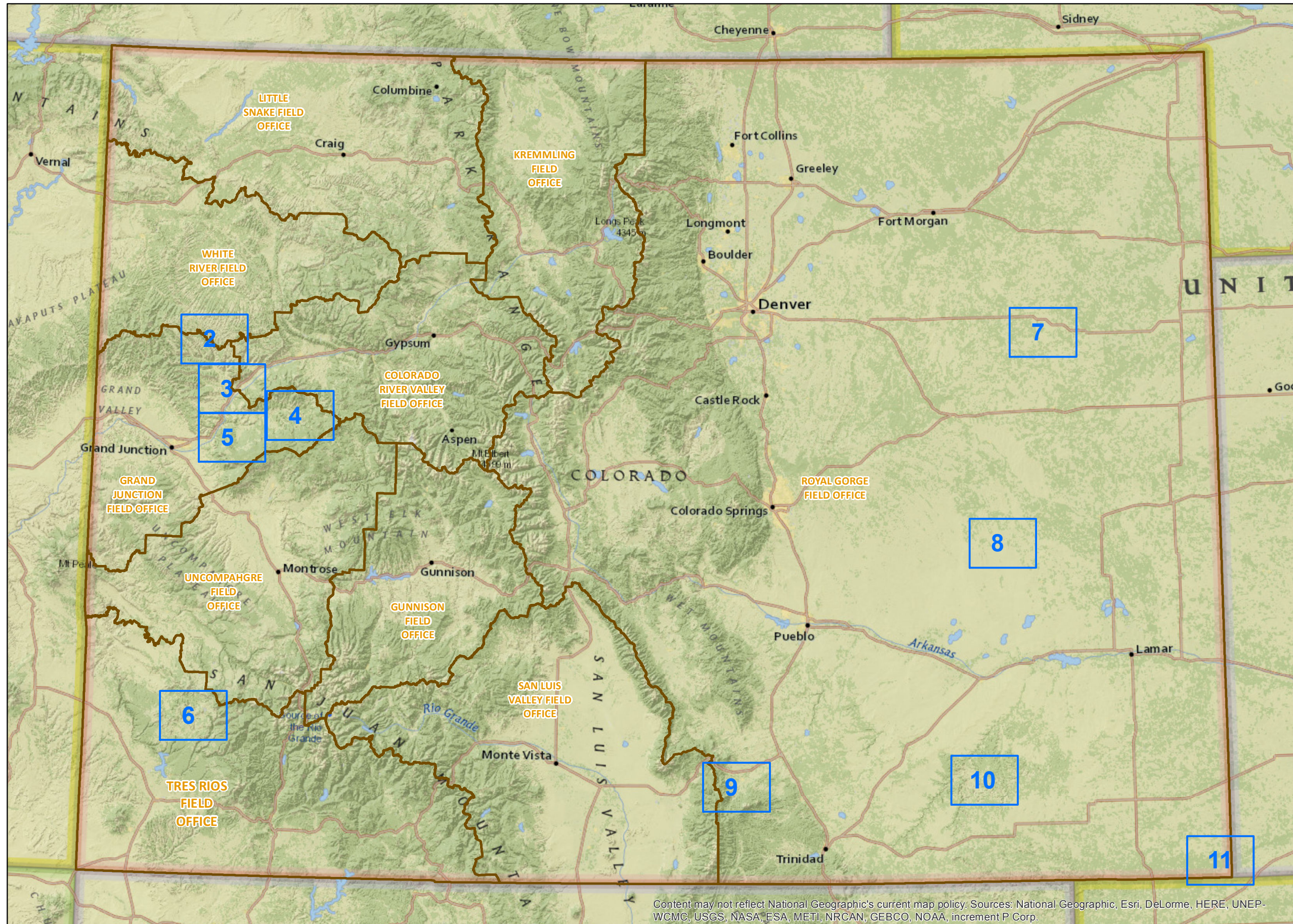


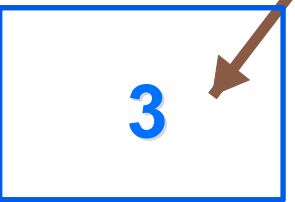
BLM Competitive Oil and Gas Lease Sale December, 2016




Legend

- BLM Field Office Areas
- Lease Map Pages

Please click on the Close Up Map Pages to see more detail.



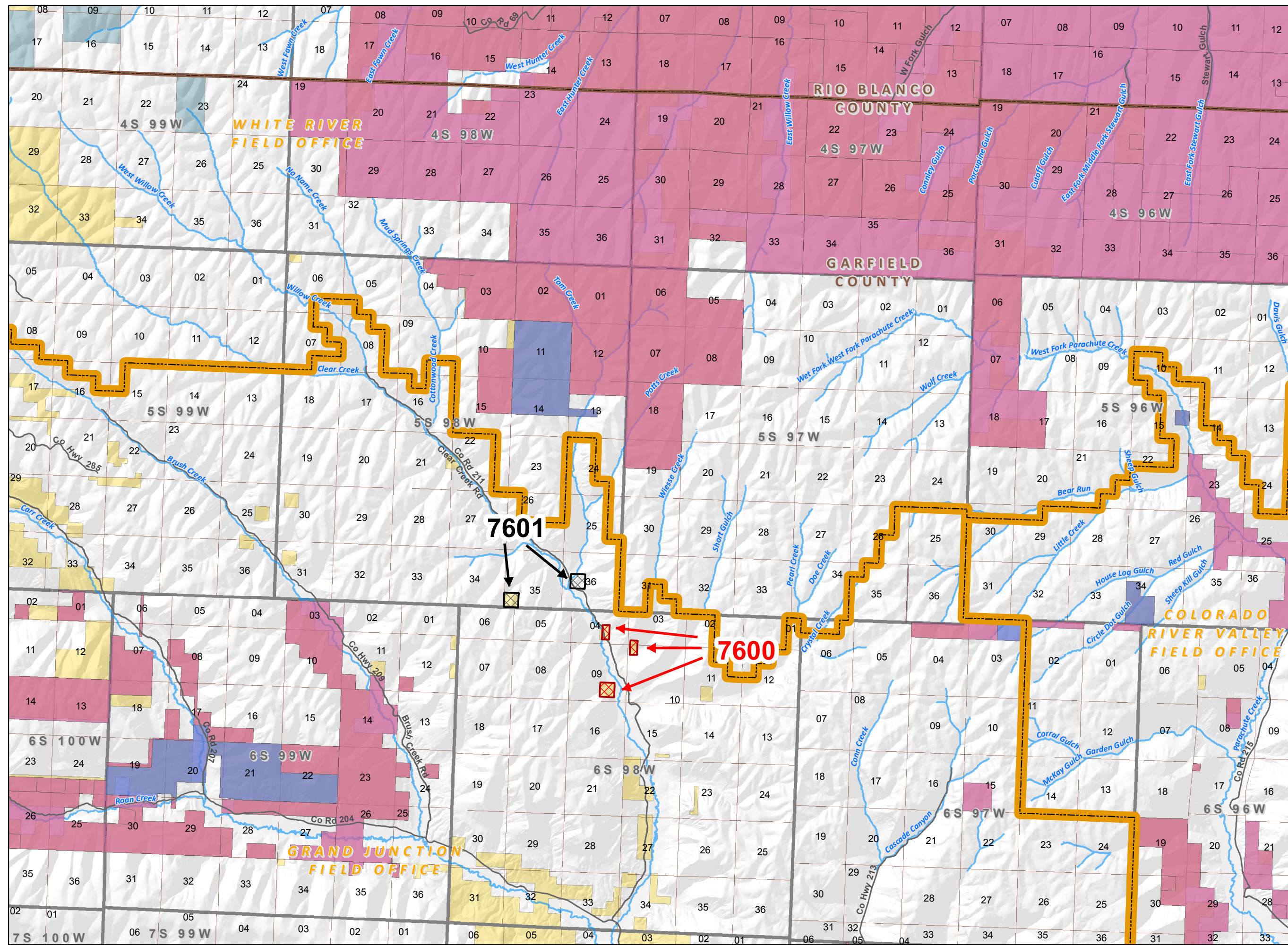
3 / 11



Click on the Page Navigation Tools to return to this Index map on Page 1.



NOTE TO MAP USERS
No warrant is made by the Bureau of Land Management as to the accuracy, reliability, or completeness of the data layers shown on this map. The official land records should be checked for the current status on any specific tract of land.



7601

7600

Legend

Status

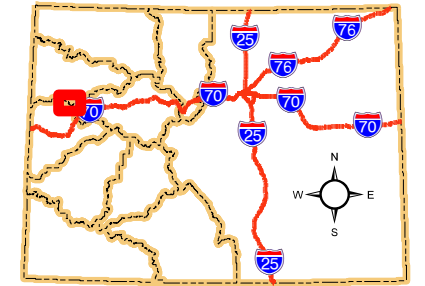
- Deferral (hatched box)
- Sale (red hatched box)
- BLM Field Office Areas Boundaries (orange dashed line)

Oil and Gas Leases

- Non-Producing Leases (blue)
- Producing Leases (pink)
- Township & Range (grey lines)
- Sections (white)
- Bureau of Land Management (yellow)
- Private (light blue)
- State, County, City; Areas (light green)
- County Boundaries (thick black line)
- Streams (blue line)
- County & Main Roads (black line)

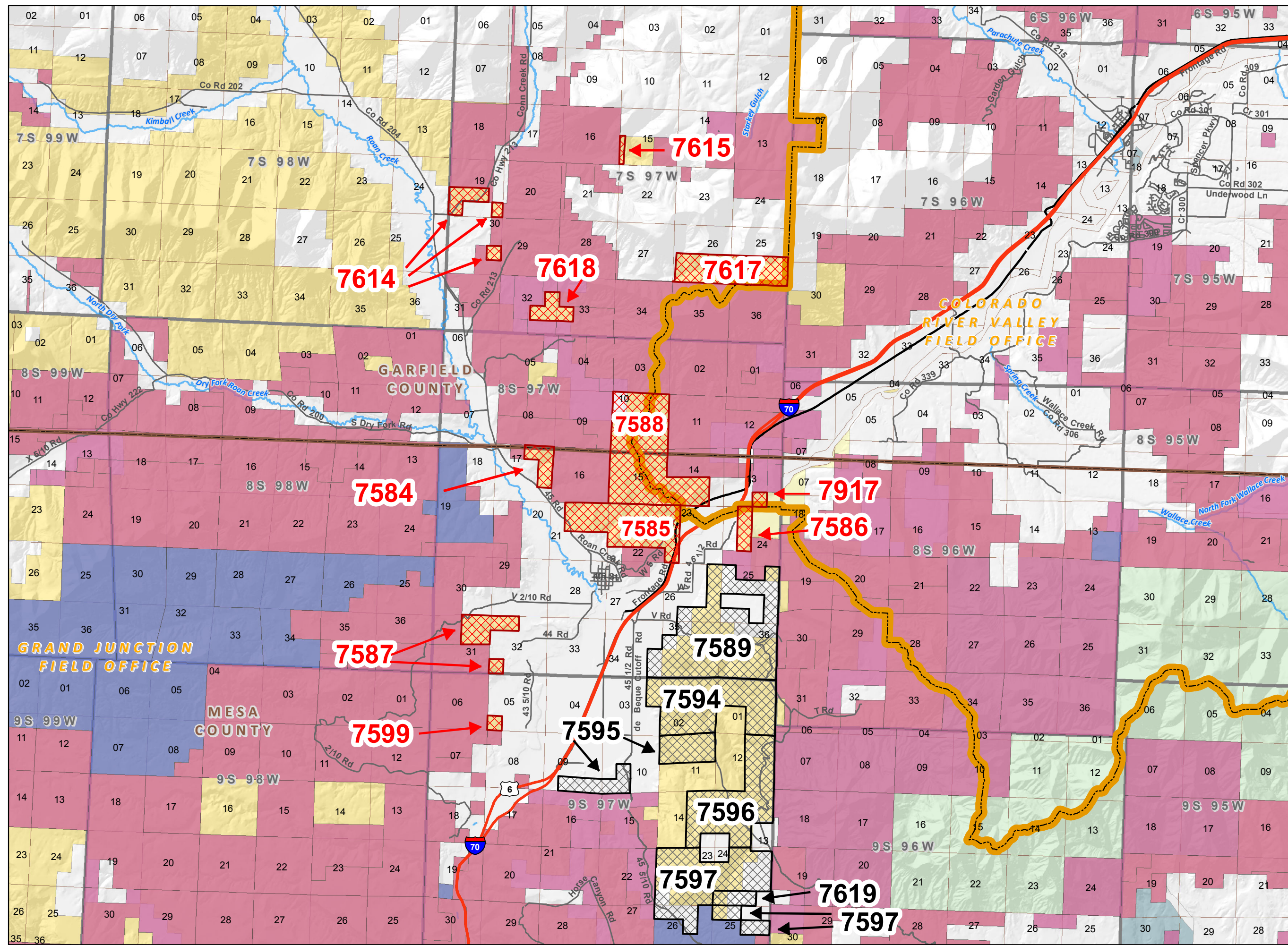
0 0.5 1 2 Miles

**Map Page Location
Page Number 2
GRAND JUNCTION FIELD OFFICE**





NOTE TO MAP USERS
No warrantee is made by the Bureau of Land Management as to the accuracy, reliability, or completeness of the data layers shown on this map. The official land records should be checked for the current status on any specific tract of land.



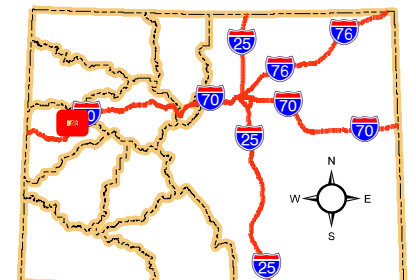
Legend

- Status**
- Deferral
 - Sale
 - BLM Field Office Areas Boundaries
- Oil and Gas Leases**
- Non-Producing Leases
 - Producing Leases
 - Township & Range
 - Sections
 - Bureau of Land Management
 - Bureau of Reclamation
 - Private
 - State, County, City, Areas
 - US Forest Service
 - County Boundaries
 - Streams
 - Interstates
 - U.S. Highway
 - County & Main Roads
 - Other Cities and Towns



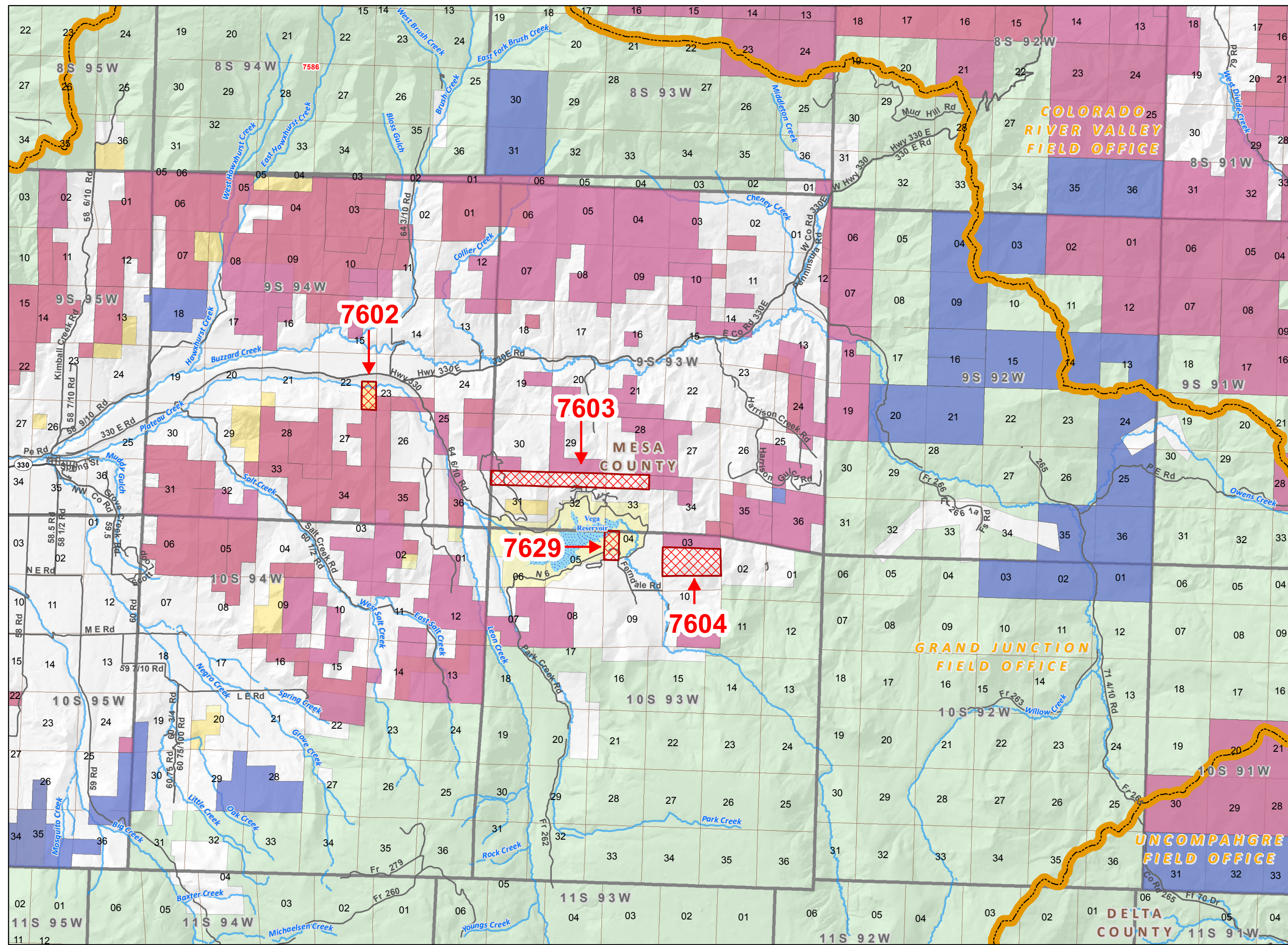
**Map Page Location
Page Number 3**

GRAND JUNCTION FIELD OFFICE





NOTE TO MAP USERS
No warrantee is made by the Bureau of Land Management as to the accuracy, reliability, or completeness of the data layers shown on this map. The official land records should be checked for the current status on any specific tract of land.

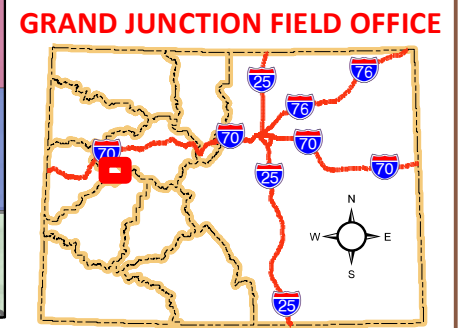


Legend

- Status**
- Sale
 - BLM Field Office Areas Boundaries
- Oil and Gas Leases**
- Non-Producing Leases
 - Producing Leases
 - Township & Range
 - Sections
 - Bureau of Land Management
 - Bureau of Reclamation
 - Private
 - State, County, City; Areas
 - US Forest Service
 - County Boundaries
 - Lakes and Reservoirs
 - Streams
 - State Highway
 - County & Main Roads
 - Other Cities and Towns



**Map Page Location
Page Number 4**



GRAND JUNCTION FIELD OFFICE



NOTE TO MAP USERS
No warrantee is made by the Bureau of Land Management as to the accuracy, reliability, or completeness of the data layers shown on this map. The official land records should be checked for the current status on any specific tract of land.

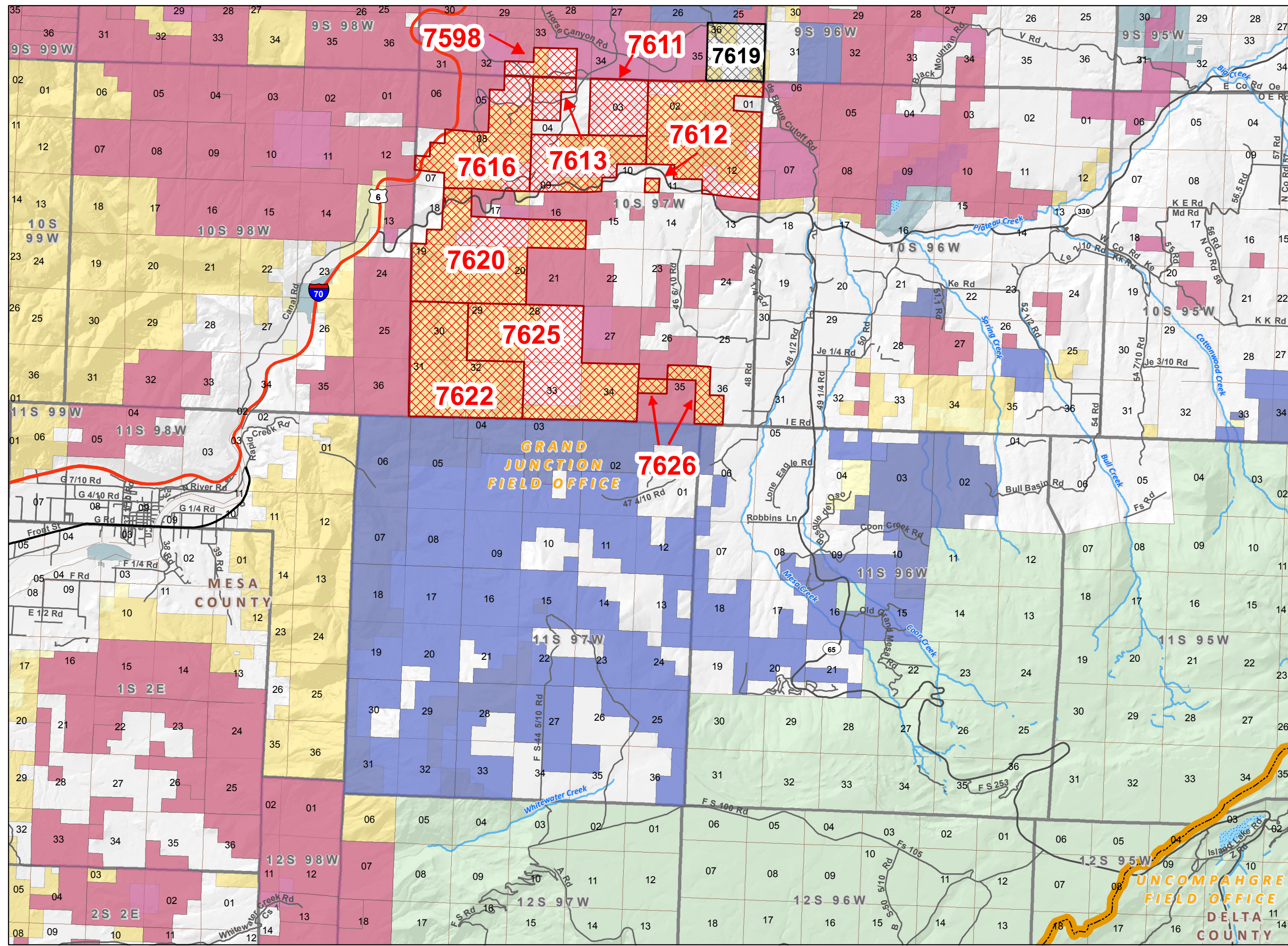
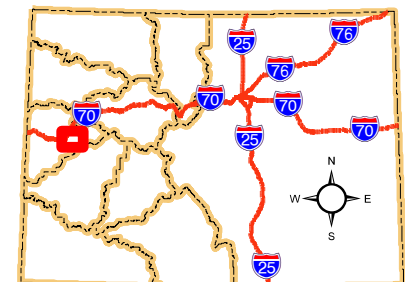
Legend

- Status**
- Deferral
 - Sale
 - BLM Field Office Areas Boundaries
- Oil and Gas Leases**
- Non-Producing Leases
 - Producing Leases
 - Township & Range
 - Sections
 - Bureau of Land Management
 - Bureau of Reclamation
 - Private
 - State, County, City; Areas
 - US Forest Service
 - County Boundaries
 - Lakes and Reservoirs
 - Streams
 - Interstates
 - U.S. Highway
 - State Highway
 - County & Main Roads
 - Other Cities and Towns



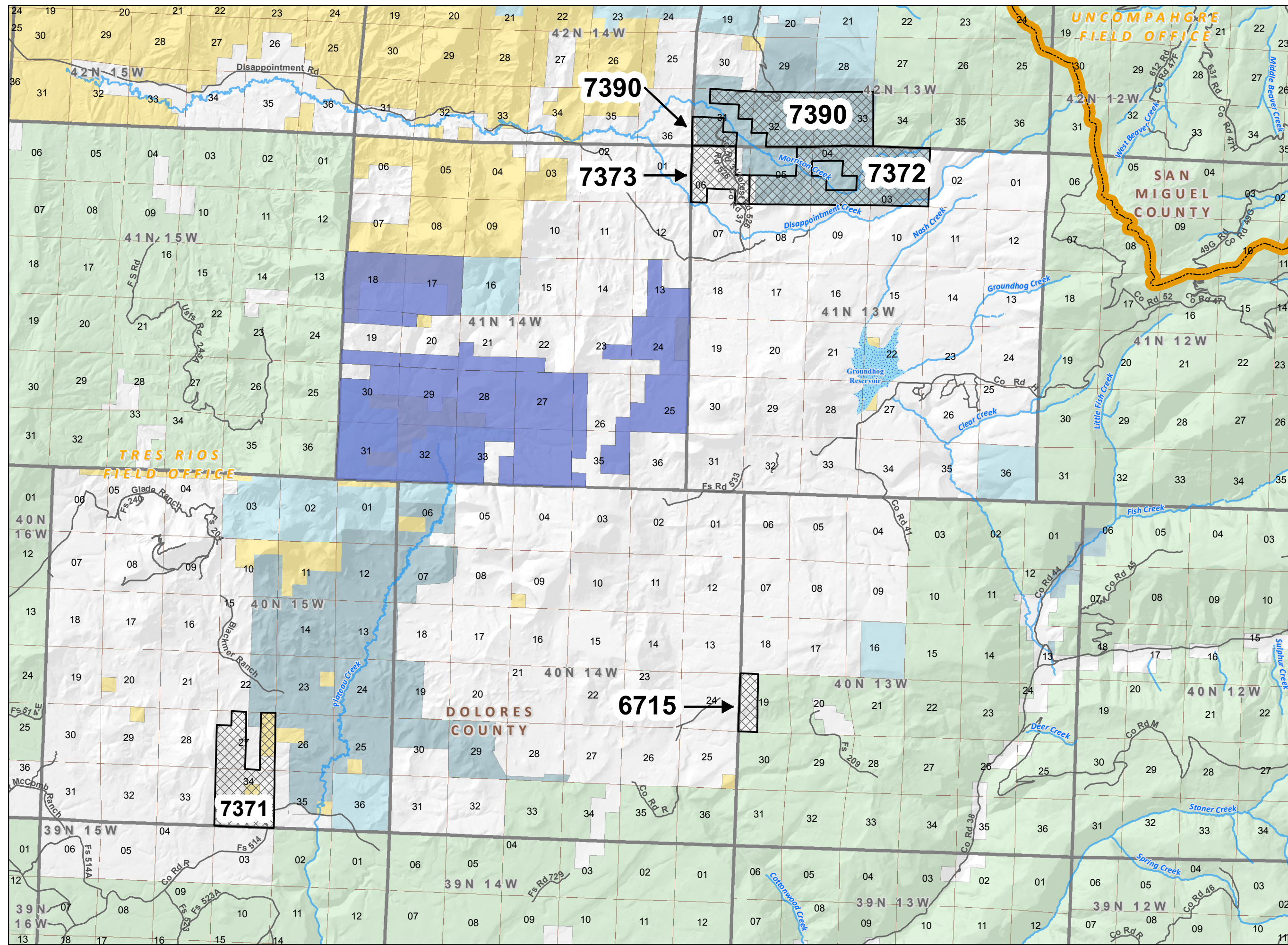
**Map Page Location
Page Number 5**

GRAND JUNCTION FIELD OFFICE



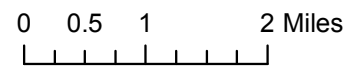


NOTE TO MAP USERS
 No warrant is made by the Bureau of Land Management as to the accuracy, reliability, or completeness of the data layers shown on this map. The official land records should be checked for the current status on any specific tract of land.

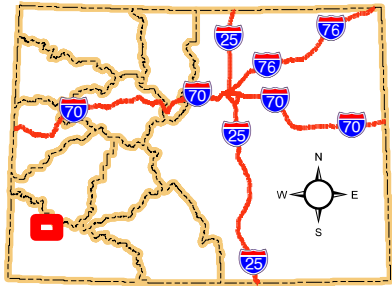


Legend

- Status**
- Deferral
 - BLM Field Office Areas Boundaries
- Oil and Gas Leases**
- Non-Producing Leases
 - Township & Range
 - Sections
 - Bureau of Land Management
 - Other Federal
 - Private
 - State
 - State, County, City; Areas
 - US Forest Service
 - County Boundaries
 - Lakes and Reservoirs
 - Streams
 - County & Main Roads

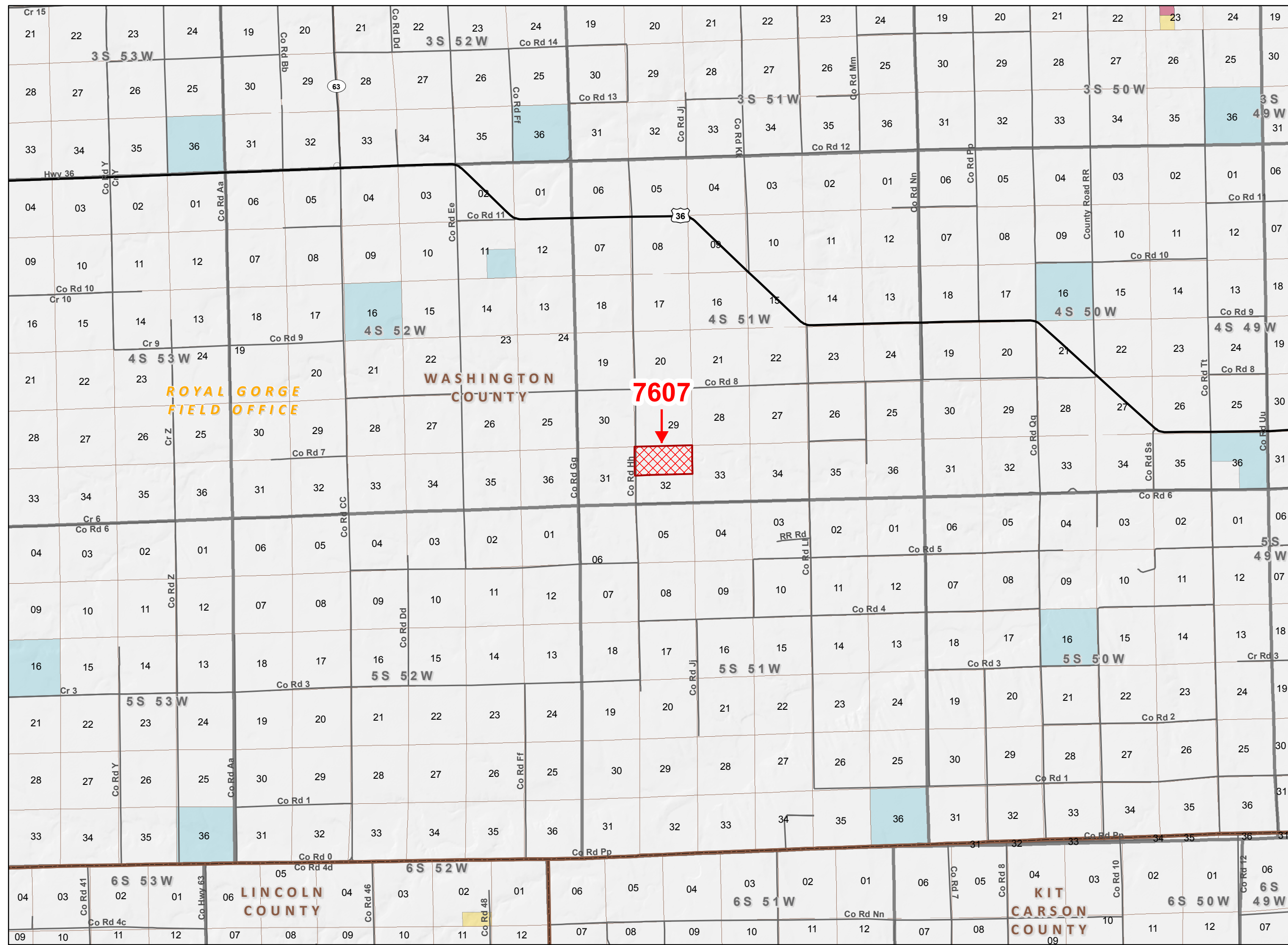


Map Page Location
Page Number 6
TRES RIOS FIELD OFFICE





NOTE TO MAP USERS
No warrantee is made by the Bureau of Land Management as to the accuracy, reliability, or completeness of the data layers shown on this map. The official land records should be checked for the current status on any specific tract of land.



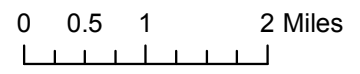
Legend

Status

- Sale
- BLM Field Office Areas Boundaries

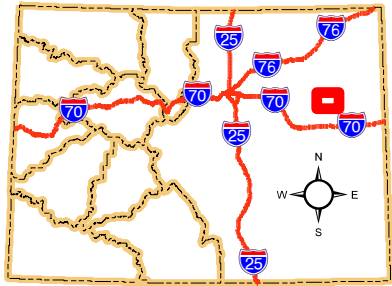
Oil and Gas Leases

- Producing Leases
- Township & Range
- Sections
- Bureau of Land Management
- Private
- State
- County Boundaries
- U.S. Highway
- State Highway
- County & Main Roads
- Other Cities and Towns



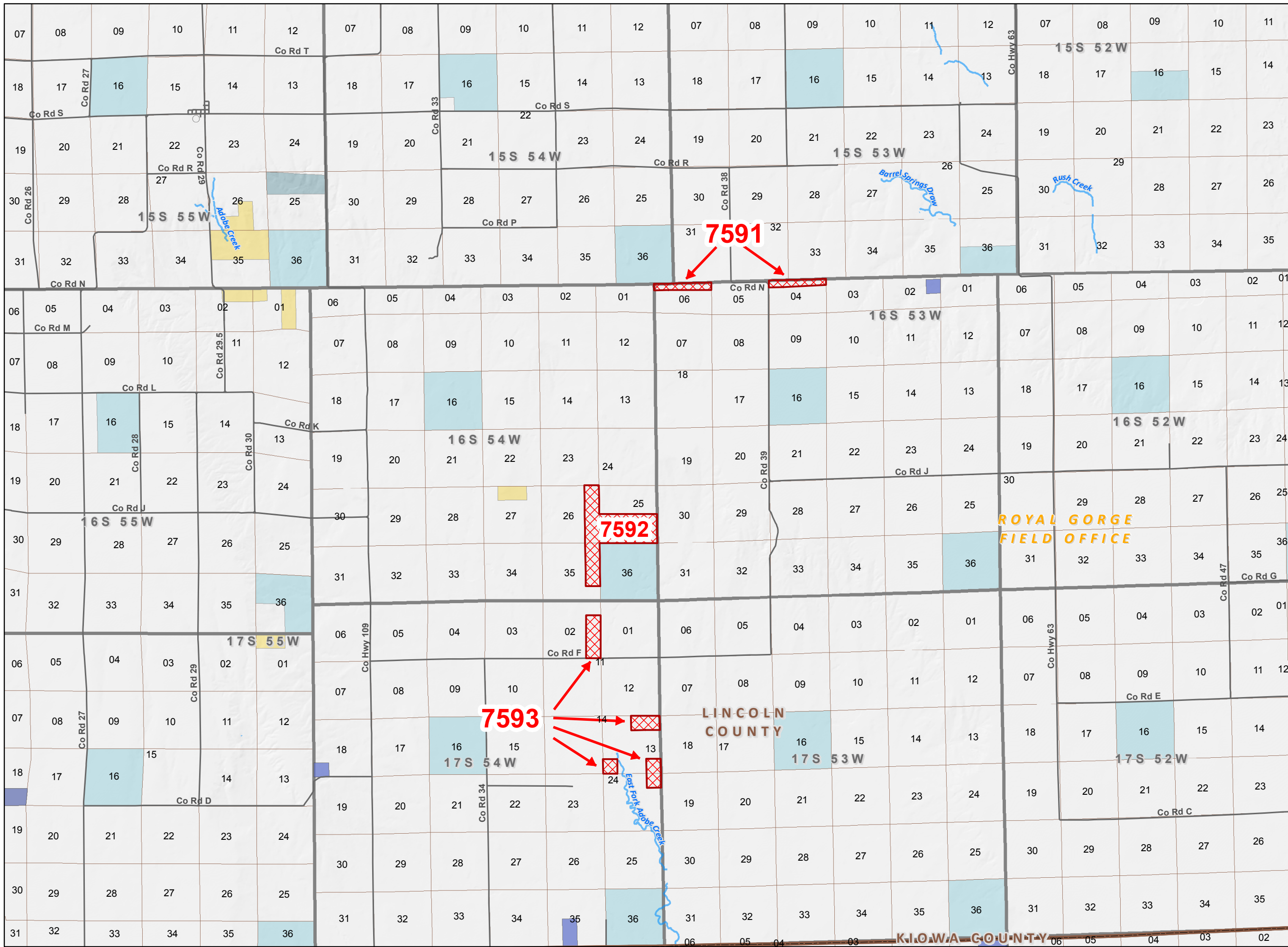
**Map Page Location
Page Number 7**

ROYAL GORGE FIELD OFFICE





NOTE TO MAP USERS
No warrantee is made by the Bureau of Land Management as to the accuracy, reliability, or completeness of the data layers shown on this map. The official land records should be checked for the current status on any specific tract of land.



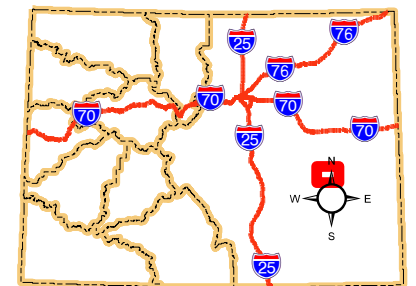
Legend

- Status**
- Sale
 - BLM Field Office Areas Boundaries
- Oil and Gas Leases**
- Non-Producing Leases
 - Township & Range
 - Sections
 - Bureau of Land Management
 - Private
 - State
 - State, County, City; Areas
 - County Boundaries
 - Streams
 - County & Main Roads
 - Other Cities and Towns



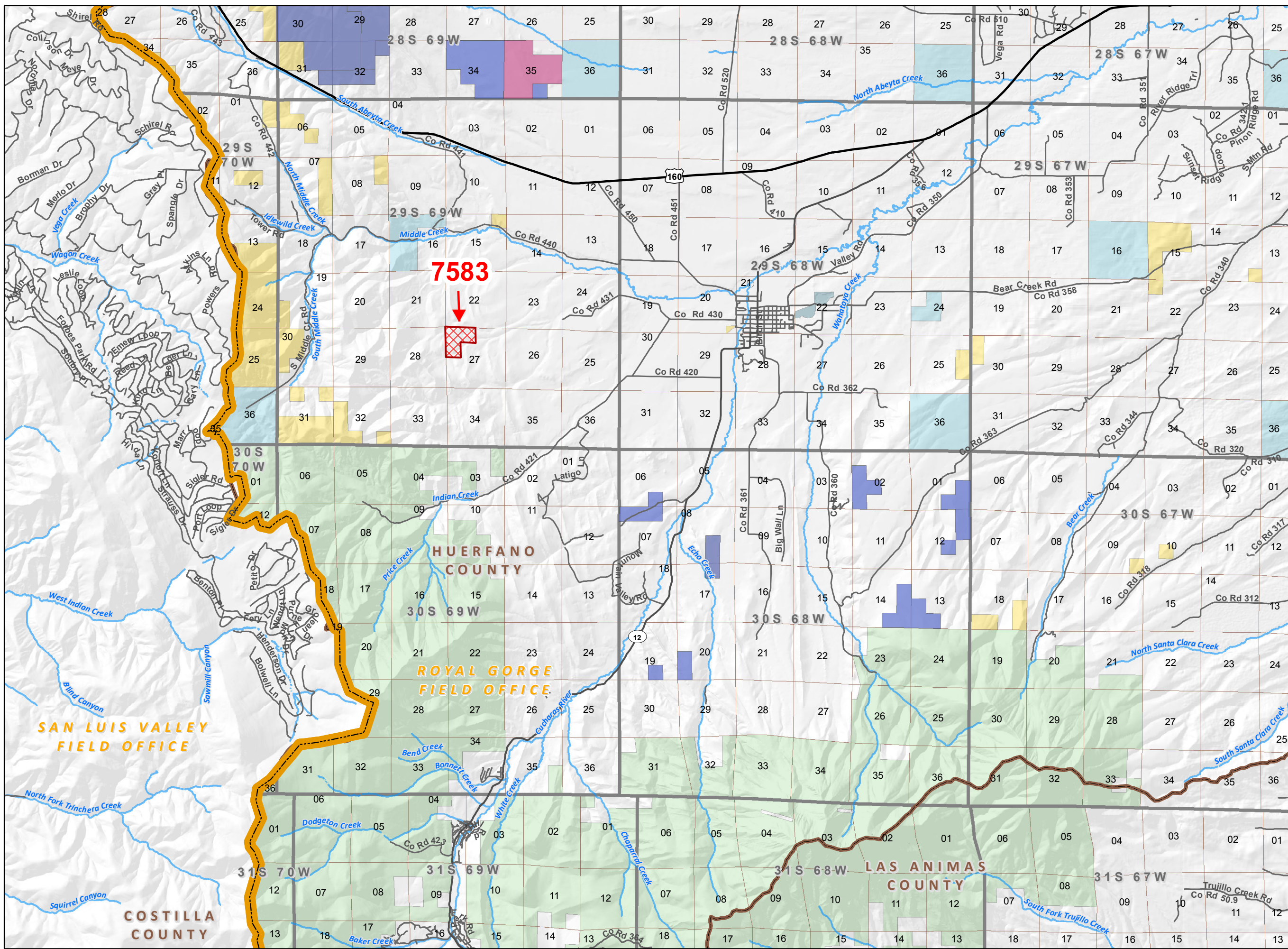
**Map Page Location
Page Number 8**

ROYAL GORGE FIELD OFFICE





NOTE TO MAP USERS
No warrant is made by the Bureau of Land Management as to the accuracy, reliability, or completeness of the data layers shown on this map. The official land records should be checked for the current status on any specific tract of land.



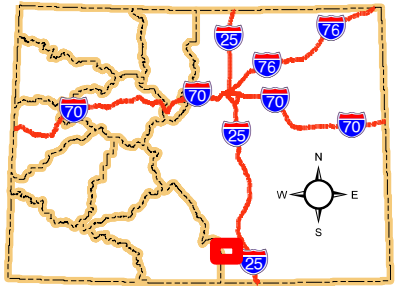
Legend

- Status**
- Sale
 - BLM Field Office Areas Boundaries
- Oil and Gas Leases**
- Non-Producing Leases
 - Producing Leases
 - Township & Range
 - Sections
 - Bureau of Land Management
 - State
 - State, County, City; Areas
 - US Forest Service
 - County Boundaries
 - Streams
 - U.S. Highway
 - State Highway
 - County & Main Roads
 - Other Cities and Towns



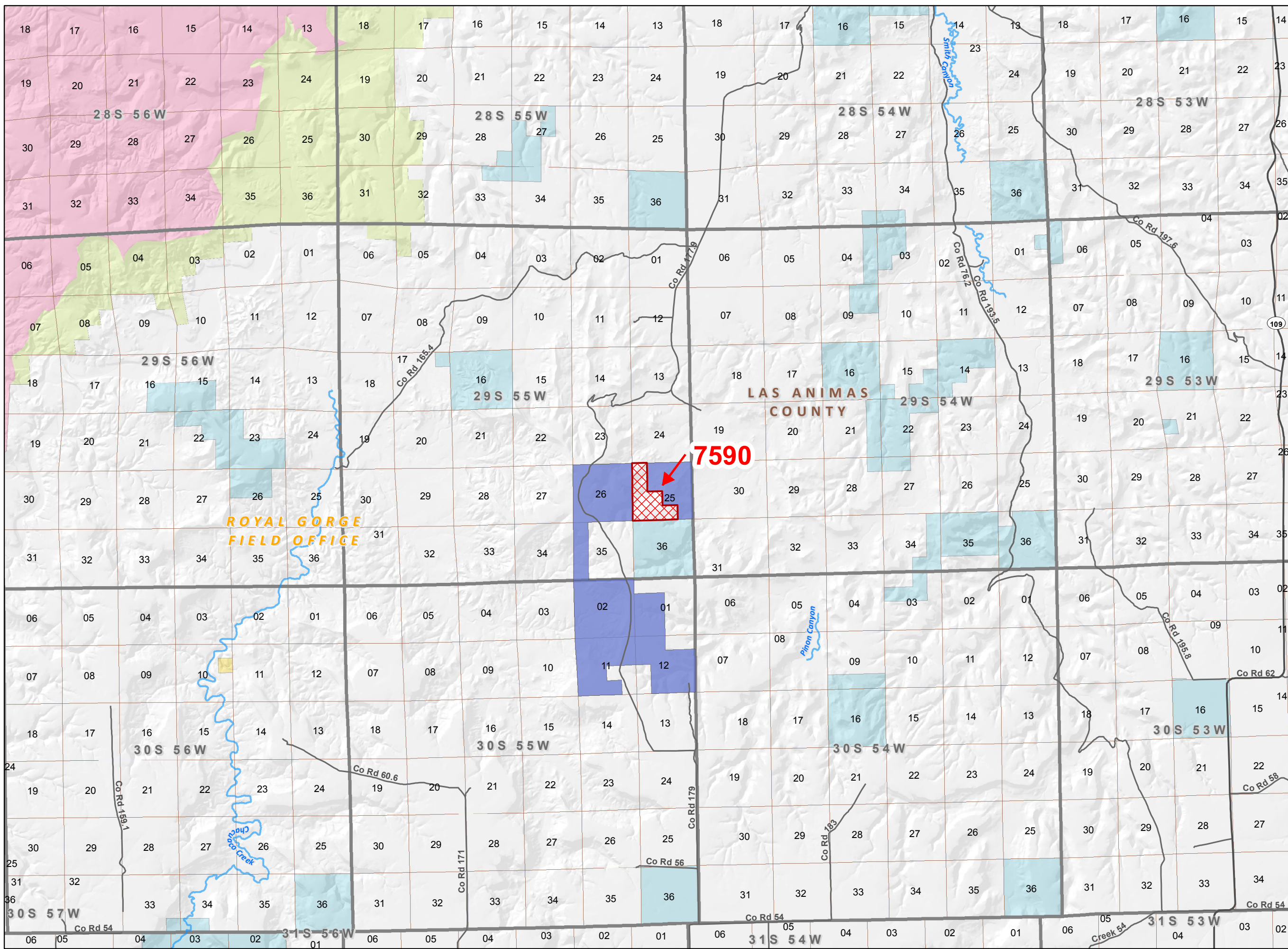
**Map Page Location
Page Number 9**

ROYAL GORGE FIELD OFFICE





NOTE TO MAP USERS
No warrantee is made by the Bureau of Land Management as to the accuracy, reliability, or completeness of the data layers shown on this map. The official land records should be checked for the current status on any specific tract of land.



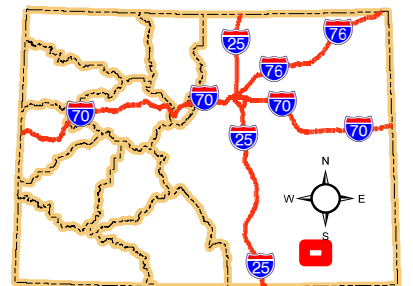
Legend

- Status**
- Sale
 - BLM Field Office Areas Boundaries
- Oil and Gas Leases**
- Non-Producing Leases
 - Township & Range
 - Sections
 - Bureau of Land Management
 - Military Reservation
 - National Grasslands
 - Private
 - State
 - County Boundaries
 - Streams
 - State Highway
 - County & Main Roads



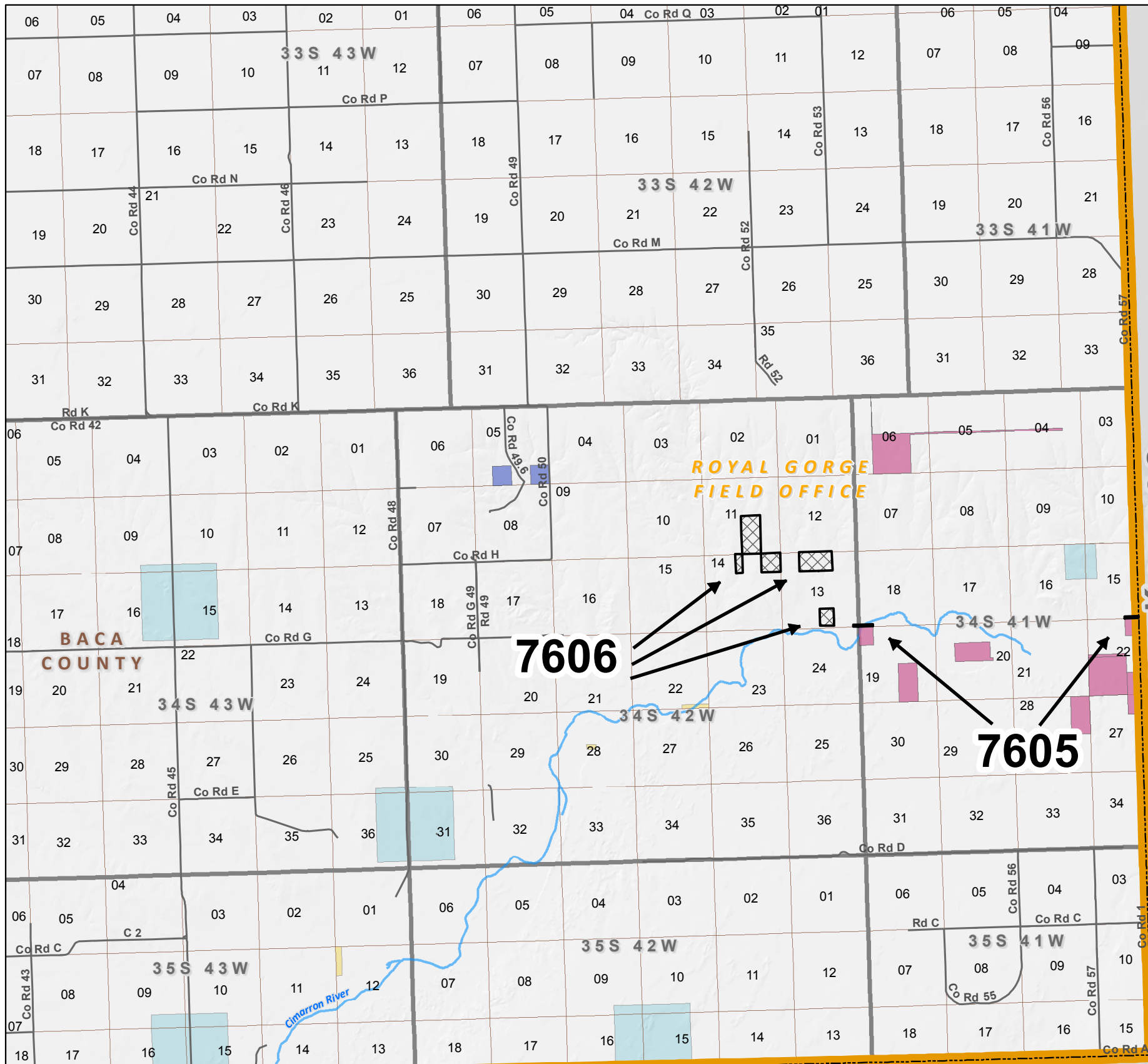
**Map Page Location
Page Number 10**

ROYAL GORGE FIELD OFFICE





NOTE TO MAP USERS
No warrantee is made by the Bureau of Land Management as to the accuracy, reliability, or completeness of the data layers shown on this map. The official land records should be checked for the current status on any specific tract of land.



Kansas

Kansas
Oklahoma

Oklahoma

Legend

- Status**
- Deferral
 - BLM Field Office Areas Boundaries
- Oil and Gas Leases**
- Non-Producing Leases
 - Producing Leases
 - Township & Range
 - Sections
 - Bureau of Land Management
 - Private
 - State
 - County Boundaries
 - Streams
 - County & Main Roads



Map Page Location
Page Number 11

ROYAL GORGE FIELD OFFICE

