

Roads

- US/State Highway
- Paved/Gravel
- Improved, High Clearance Recommended
- Unimproved, Not Recommended
- Skutumpah and Johnson Canyon Roads
- Scenic Byway/Backway

Land Manager

- Bureau of Land Management (BLM)
- BLM Wilderness/Instant Study Area
- BLM Wilderness Area
- National Park Service
- State
- State Parks
- Private
- Forest Service

Visitor Information

- Day Use Area
- Scenic Viewpoint
- Wayside Exhibit
- Grand Staircase-Escalante National Monument (GSENM) Boundary
- Trailhead
- Point of Interest
- Restroom

Scale

0 3 6 Kilometers
 0 3 6 Miles

* DISCLAIMER: This information is provided as a courtesy only, no warranty expressed or implied, is made as to the current validity of this information. Trail ratings are only intended to serve as general overviews of difficulty levels, and may vary from the trail ratings in other areas you are familiar with. Weather events can quickly alter trail conditions and increase difficulty levels. Be prepared for changing conditions at all times. Unmarked abandoned mines may be present near the trails for your safety, never enter abandoned mines. The BLM is not liable for any incidents arising from the use of the information presented here; each user is solely responsible for their own safety while enjoying their public lands. Produced April 2016.

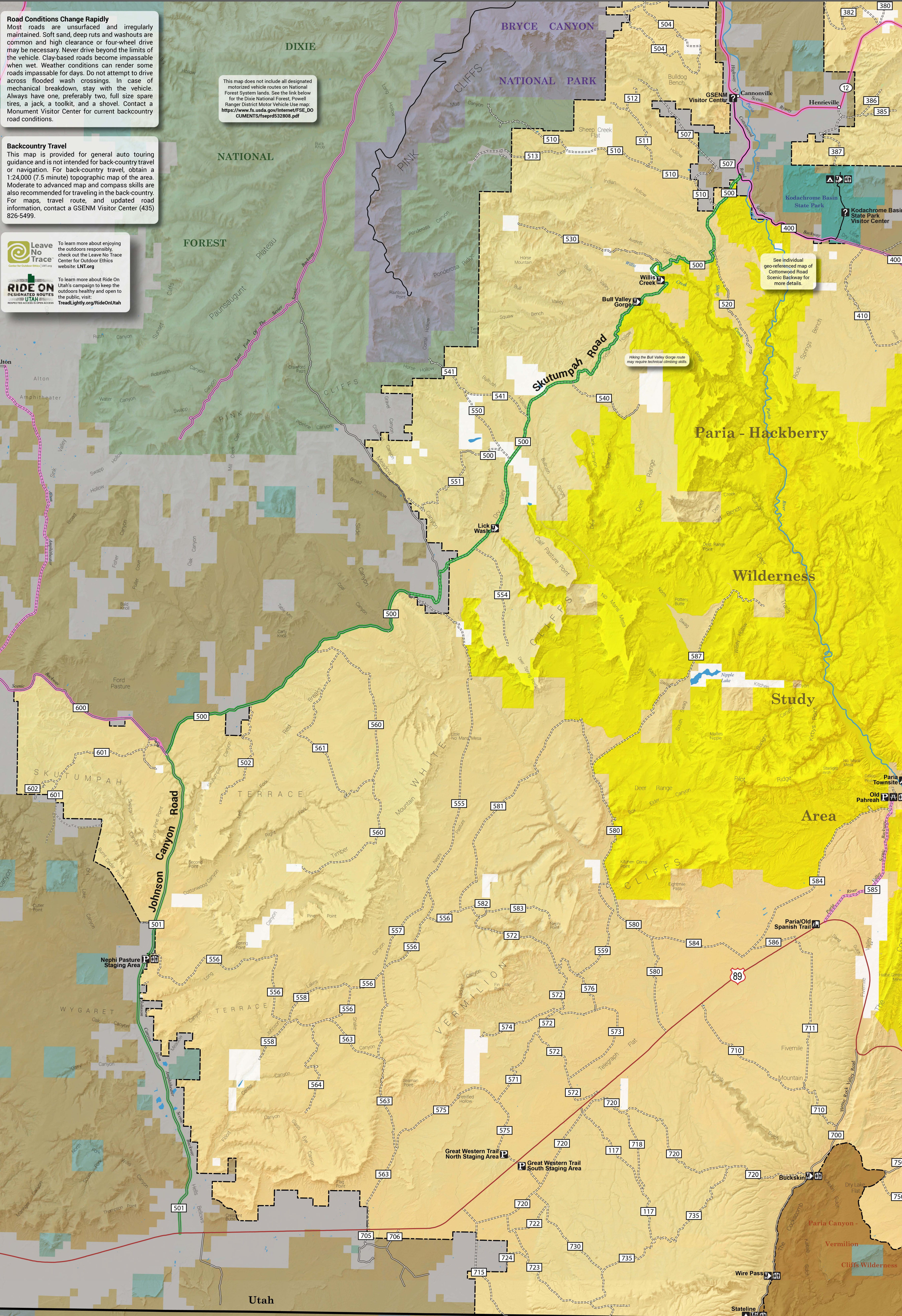
Road Conditions Change Rapidly
 Most roads are unsurfaced and irregularly maintained. Soft sand, deep ruts and washouts are common and high clearance or four-wheel drive may be necessary. Never drive beyond the limits of the vehicle. Clay-based roads become impassable when wet. Weather conditions can render some roads impassable for days. Do not attempt to drive across flooded wash crossings. In case of mechanical breakdown, stay with the vehicle. Always have one, preferably two, full size spare tires, a jack, a toolkit, and a shovel. Contact a Monument Visitor Center for current backcountry road conditions.

This map does not include all designated motorized vehicle routes on National Forest System lands. See the link below for the Dixie National Forest, Powell Ranger District Motor Vehicle Use map: https://www.fs.usda.gov/Internet/FSE_DO_CUMENTS/fseprd532808.pdf

Backcountry Travel
 This map is provided for general auto touring guidance and is not intended for back-country travel or navigation. For back-country travel, obtain a 1:24,000 (7.5 minute) topographic map of the area. Moderate to advanced map and compass skills are also recommended for traveling in the back-country. For maps, travel route, and updated road information, contact a GSENM Visitor Center (435) 826-5499.

Leave No Trace
 To learn more about enjoying the outdoors responsibly, check out the Leave No Trace Center for Outdoor Ethics website: LNT.org

RIDE ON DESIGNATED ROUTES
 To learn more about Ride On Utah's campaign to keep the outdoors healthy and open to the public, visit: TreadLightly.org/RideOnUtah



See individual geo-referenced map of Cottonwood Road Scenic Backway for more details.

Hiking the Bull Valley Gorge route may require technical climbing skills.