

BLM Moab Camping

South of I-70

This map is geo-referenced
BLM Moab Field Office
82 Dogwood Ave, Moab, UT
435-259-2100

Land Manager

- Bureau of Land Management (BLM)
- BLM Wilderness Study Area
- State
- Forest Service
- State Wildlife Reserve
- State Park
- National Park
- Military Reservations & Corps of Engineers

Roads

- Interstate
- State Highway
- Improved Surface
- Unimproved Surface
- Scenic Byway
- Backcountry Byway

Visitor Information

- Parking
- Trailhead
- Boat Ramp
- Restroom
- Point of Interest
- Scenic View Point
- Arch
- Archeological Site

Camping Restrictions

- Camp only in campgrounds
- Camp only in designated sites* (portable toilet/human waste carryout required)
- Portable toilet/human waste carryout required
- No camping

***Designated Sites Information**

* Designated sites are marked with a brown post and a tent symbol. These sites are free, and unless a constructed toilet is provided campers are required to possess and use a portable toilet.

Camping and vehicle travel may be limited to posted site boundaries and parking areas.

Woodcutting and gathering, including Christmas tree cutting, is prohibited.

Additional Designated Sites

Bride Canyon: 6 sites located in this area
Picture Frame Arch Area: 4 sites located 6 miles from Highway 191
Mill Canyon/Cotter Road/Dubinky Road Area: 40 sites located in this area
Dripping Spring near Ten Mile Wash: Several large sites on the west side of the road and within the riparian fences

Campground:

- Toilets
- Fire rings
- Fee required
- First come first serve

Group Site:

- Toilets
- Min and Max group size may vary
- Reservations made through www.recreation.gov

0 2.5 5 10 Kilometers 0 2.5 5 10 Miles

Campground	# Sites	RV Accessible	Reservable
Big Bend	23	Yes	Yes, only 3 group sites
Cowboy Camp	7	NO	NO
Cowskin	5	NO	NO
Dewey Bridge	7	Yes	NO
Drinks Canyon	17	Yes, only small RVs	NO
Fisher Towers	5	NO	NO
Goldbar	9	Yes	Yes, only 4 group sites
Goose Island	19	Yes	Yes, only 2 group sites
Grandstaff	16	NO	NO
Hal Canyon	11	NO	NO
Hatch Point	10	Yes	NO
Hittle Bottom	15	Yes, only small RVs	Yes, only 1 group site
Horsethief	56	Yes	NO
Hunter Canyon	12	NO	NO
Jaycee Park	7	NO	NO
Juniper	17	Yes, only small RVs	NO
Ken's Lake	31	Yes	Yes, only 2 group sites
King's Bottom	11	Yes, only small RVs	NO
Ledge A,B	74	Yes	NO
Ledge C,D,E	31	NO	Yes, only 1 group site
Lone Mesa	5 group sites	Yes	Yes, all 5 group sites
Lower Onion Creek	21	Yes	Yes, only 2 group sites
Moonflower Canyon	8	NO	NO
Oak Grove	7	NO	NO
Sand Flats Camping Areas A-H	120	Yes, only camps A & E	Yes, only group sites E-1,E-2
Upper Big Bend	8	NO	NO
Upper Onion Creek	14	Yes	Yes, only 2 group sites
Williams Bottom	17	Yes, only small RVs	NO
Windwhistle	15	Yes, only small RVs	Yes, only 1 group site

Visit www.recreation.gov for reservable sites

Leave No Trace Principles

Travel and Camp on Durable Surfaces

Durable surfaces include established trails and campsites, rock, gravel, dry grasses or snow. Protect riparian areas by camping at least 200 feet from lakes and streams.

Good campsites are found, not made. Altering a site is not necessary.

In popular areas: Concentrate use on existing trails and campsites. Walk single file in the middle of the trail, even when wet or muddy. Keep campsites small. Focus activity in areas where vegetation is absent.

In pristine areas: Disperse use to prevent the creation of campsites and trails. Avoid places where impacts are just beginning.

Minimize Campfire Impacts

Campfires can cause lasting impacts to the backcountry. Use a lightweight stove for cooking and enjoy a candle lantern for light. Where fires are permitted, use established fire rings, fire pans, or mound fires. Keep fires small. Only use sticks from the ground that can be broken by hand. Burn all wood and coals to ash, put out campfires completely, then scatter cool ashes.

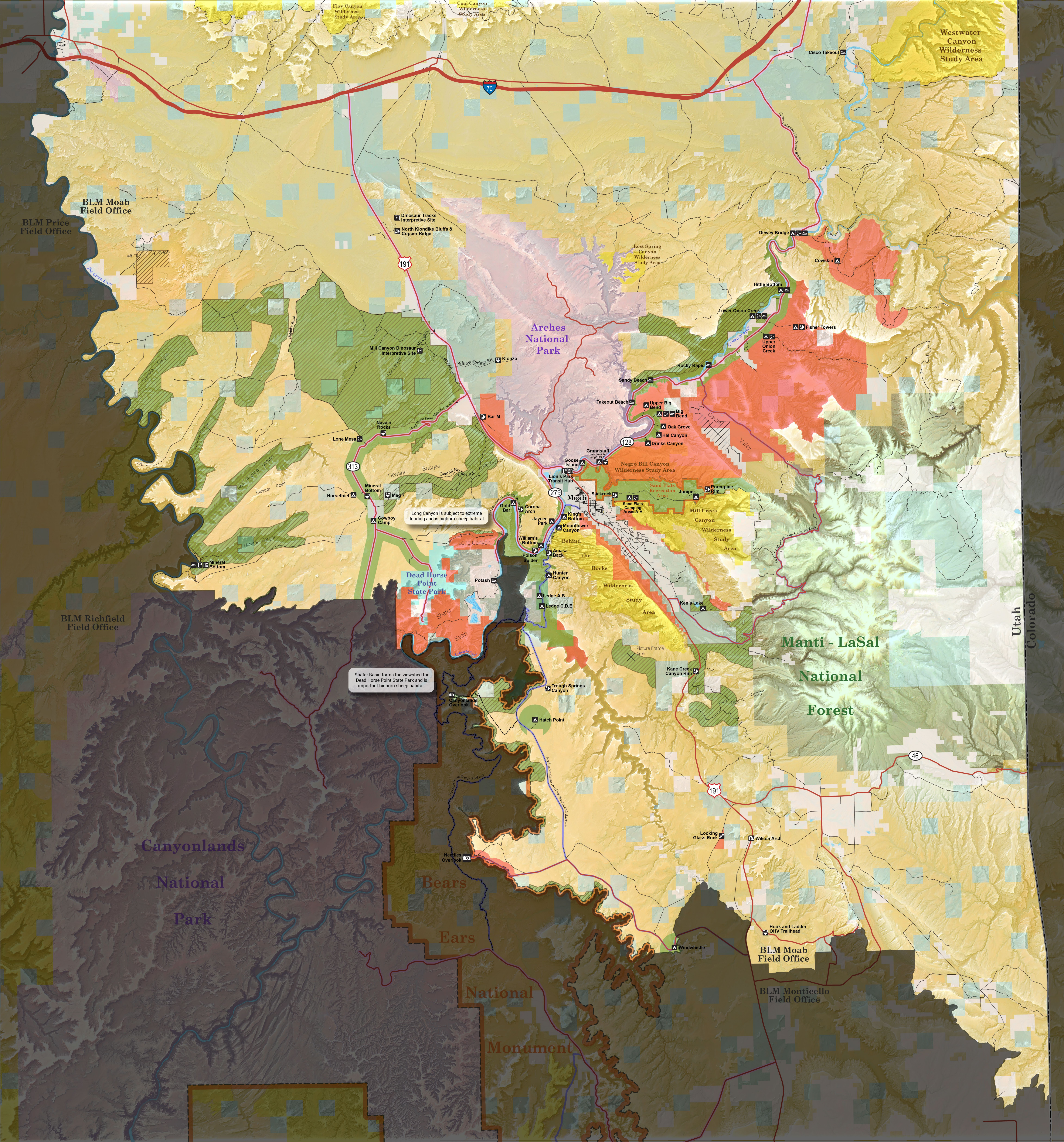
Dispose of Waste Properly

Pack it in, pack it out. Inspect your campsite and rest areas for trash or spilled foods. Pack out all trash, leftover food and litter. Deposit solid human waste in catholes dug 6 to 8 inches deep, at least 200 feet from water, camp and trails. Cover and disguise the cathole when finished. Pack out toilet paper and hygiene products. To wash yourself or your dishes, carry water 200 feet away from streams or lakes and use small amounts of biodegradable soap. Scatter strained dishwater.

Plan Ahead and Prepare

Know the regulations and special concerns for the area you'll visit. Prepare for extreme weather, hazards, and emergencies. Schedule your trip to avoid times of high use. Visit in small groups when possible. Consider splitting larger groups into smaller groups.

The following are a selection from the Leave No Trace Seven Principles. © 1999 by the Leave No Trace Center for Outdoor Ethics. www.LNT.org



Utah
Colorado