



Roads

- State Highway
- Improved Surface
- Unimproved Surface, 4WD

Trails

- Hiking
- Unimproved Surface, 4WD

Points of Interest

- Archeologic Point of Interest
- Geologic Point of Interest
- Spring

All water sources are intermittent and should not be counted on. Carry enough water.

Visitor Information

- BLM Ranger Station
- Trailhead
- Fee Tube

Land Status

- Bureau of Land Management (BLM)
- BLM Wilderness Study Area (WSA)
- Private
- State
- National Recreation Area
- Bureau of Indian Affairs
- Bears Ears National Monument



DISCLAIMER: This information is provided by the BLM as a courtesy only. No warranty expressed or implied, is made as to the current validity of this information. The BLM is not liable for any incidents arising from the use of this information. Trail ratings are intended to serve as a general overview of difficulty level and may vary from ratings in other areas or additional sources. Weather events can quickly alter trail conditions and increase difficulty levels; be prepared for changing conditions at all times. Unsecured, abandoned mines may be present near trails; for your safety do not enter these areas. Users are solely responsible for their own safety while enjoying public lands. Please respect the rights of others, including private property owners. Check in with the field office to confirm road closures, restrictions, and current conditions. Map produced February 2017, edited March 2018.

Visitor Information

Camping is not allowed at any ruins, rock art sites, or alcoves.

All water sources are intermittent. Visitors should not rely on these springs for their drinking water.

No new campsites are to be created.

Pets are NOT ALLOWED in Grand Gulch, Slickhorn, or tributary canyons.

The use of rock climbing equipment to access archaeological sites is not allowed.

The permit holder will be held legally and financially responsible for historical, archaeological, cultural, or ecological values damaged, destroyed, or removed by trip participants. Moving or disturbing cultural artifacts from any location is a violation of federal law.

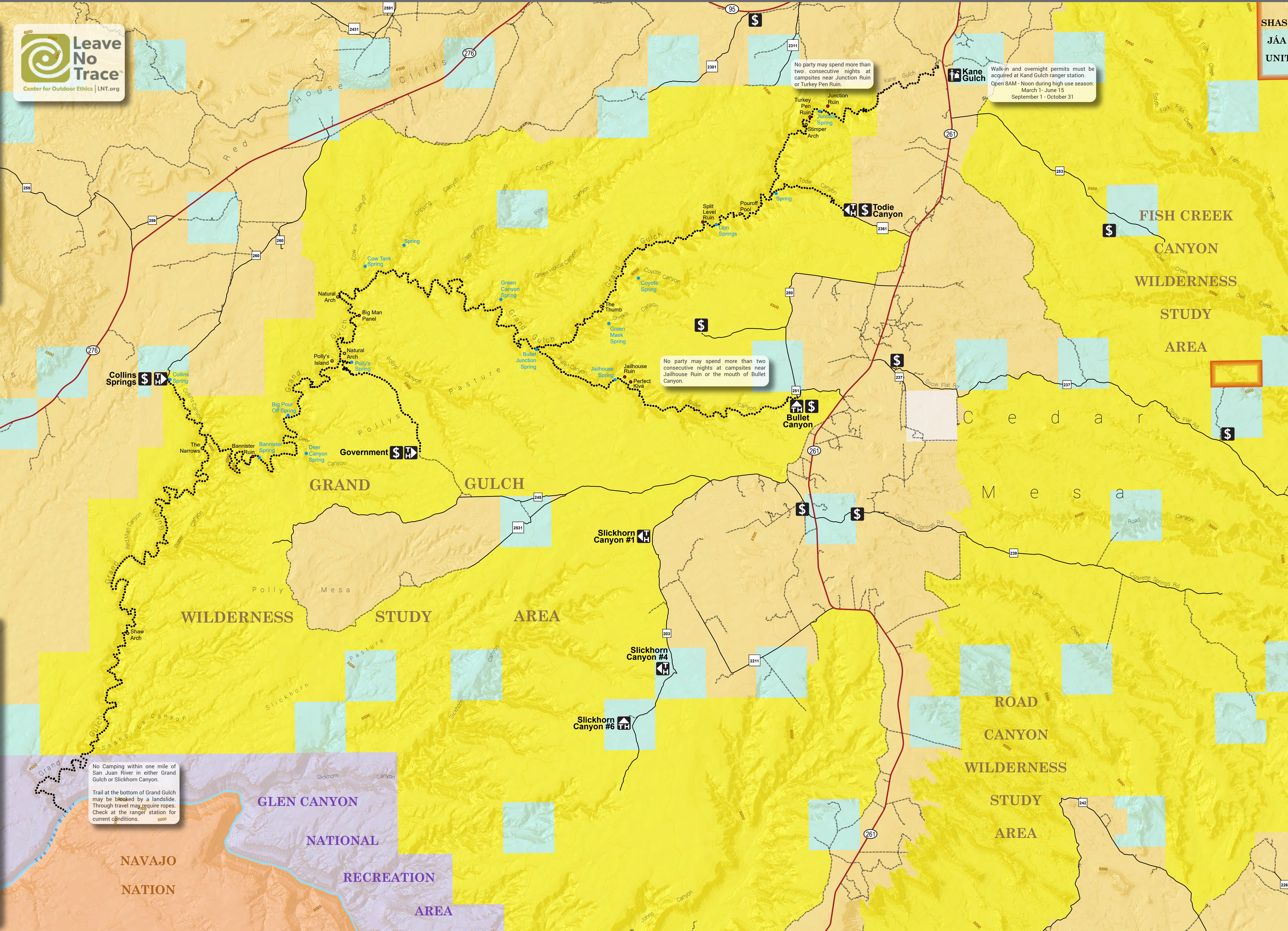
Disposal of human waste is not permitted within 200 feet of a water source, trail, or campsite.

Human waste will be deposited in a 'cat hole' (6 inches deep) and covered with soil. Used toilet paper cannot be burned or buried, it must be carried out.

Washing, bathing or swimming is not permitted in or near natural water sources such as springs, streams and pot holes.

Campfires are not allowed in Cedar Mesa Canyons.

RESPECT AND PROTECT



Permit Information

Permits are required for all Day-Use and Overnight stays in the canyons of Cedar Mesa.

Kane Gulch Ranger Station is open during the High-Use Season:

- March 1 - June 15
- September 1 - October 31
- Every day of the week, 8AM - Noon

Cedar Mesa Permit Office (435) 587-1510 is open:

- Monday - Friday, 8AM - Noon, except on federal holidays

Day-Use:

- Day-use permits are \$2 per person per day.
- Week-long day-use permits are available for \$5 per person.
- Permits are available at self-pay tubes located at trailheads or at the Kane Gulch Ranger Station.

Overnight-Use:

- Reservations can be made in advance through recreation.gov.

High Season

- \$8 per person per trip.
- All permits, including reservations, must be picked up in person from the Kane Gulch Ranger Station on the day of your trip.
- Permits are limited to 20 overnight visitors per trailhead per day! 12 of the 20 are available for reservation. The remaining 8 are available as walk-in permits on a first come, first served basis.

Low Season

- \$5 per person per trip.
- Permits and fee tubes are available at trailheads.

No Camping within one mile of San Juan River in either Grand Gulch or Slickhorn Canyon.

Trail at the bottom of Grand Gulch may be blocked by a landslide. Through travel may require ropes. Check at the ranger station for current conditions.

No party may spend more than two consecutive nights at campsites near Junction Ruin or Turkey Pen Ruin.

No party may spend more than two consecutive nights at campsites near Jailhouse Ruin or the mouth of Bullet Canyon.

Walk-in and overnight permits must be acquired at Kane Gulch ranger station. Open 8AM - Noon during high use season: March 1 - June 15 September 1 - October 31