

Crack Canyon Wilderness Study Area

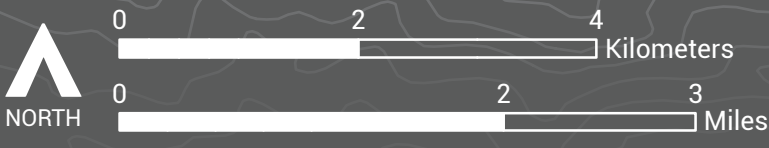
BLM Price Field Office | 125 S. 600 W. Price, UT | 435-636-3600



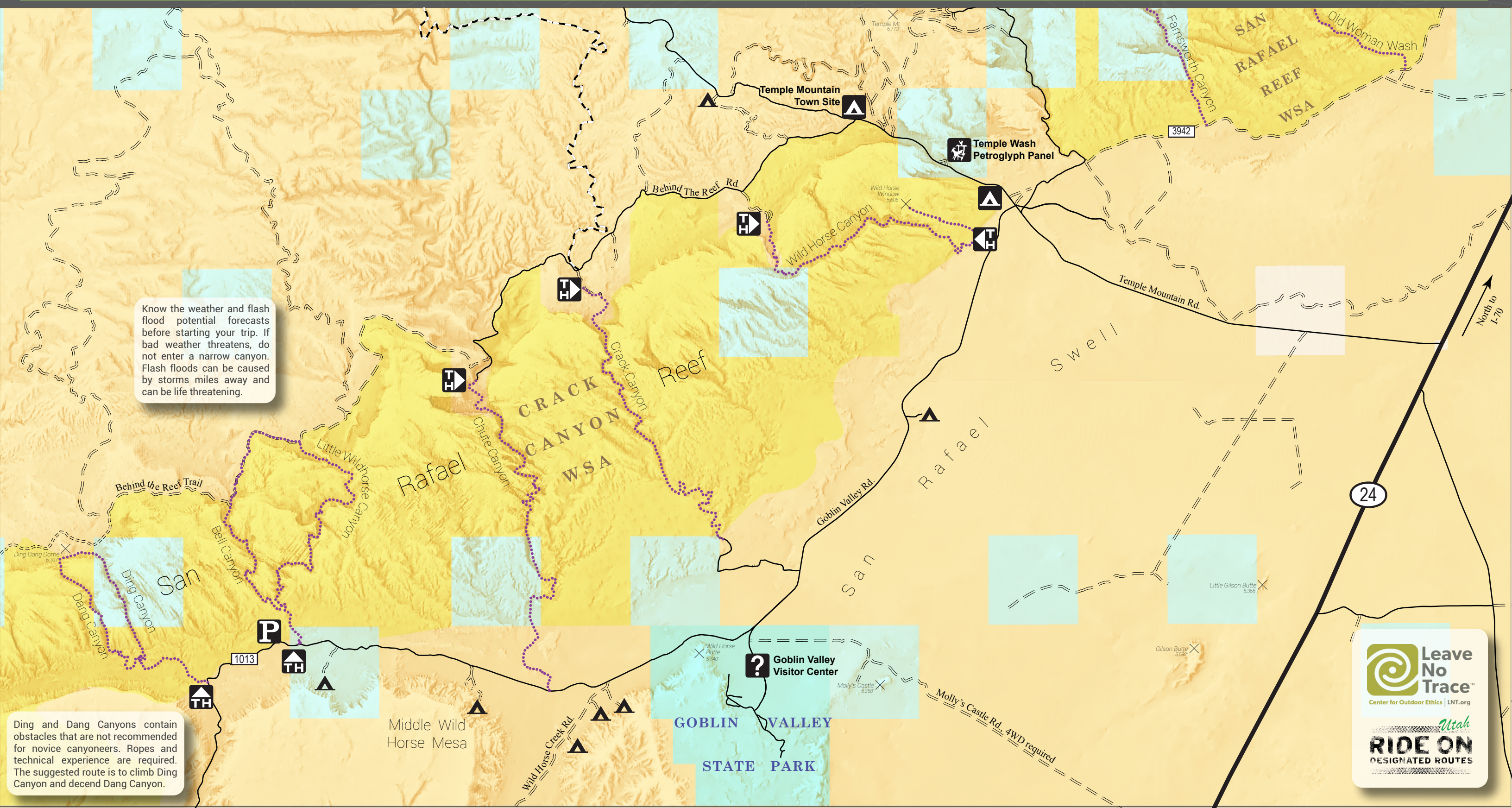
- State Highway
- Improved Surface
- Unimproved Surface
- ATV, Motorcycle, Bike
- Motorcycle, Bike
- Hiking

- Visitor Information**
- Trail Head
 - Parking
 - Petroglyphs
 - Developed Camping
 - Dispersed Camping
 - Visitor Center

- Land Manager**
- Bureau of Land Management (BLM)
 - BLM Wilderness Study Area (WSA)
 - Private
 - State
 - State Park



*DISCLAIMER: This information is provided as a courtesy only, no warranty, expressed or implied, is made as to the current validity of this information. Trail ratings are only intended to serve as general overviews of difficulty levels, and may vary from the trail ratings in other areas you are familiar with. Weather events can quickly alter trail conditions and increase difficulty levels, be prepared for changing conditions at all times. Unsecured, abandoned mines may be present near the trails—for your safety, never enter abandoned mines. The BLM is not liable for any incidents arising from the use of the information presented here—each user is solely responsible for their own safety while enjoying their public lands. Produced April 2016.



Know the weather and flash flood potential forecasts before starting your trip. If bad weather threatens, do not enter a narrow canyon. Flash floods can be caused by storms miles away and can be life threatening.

Ding and Dang Canyons contain obstacles that are not recommended for novice canyoneers. Ropes and technical experience are required. The suggested route is to climb Ding Canyon and descend Dang Canyon.

