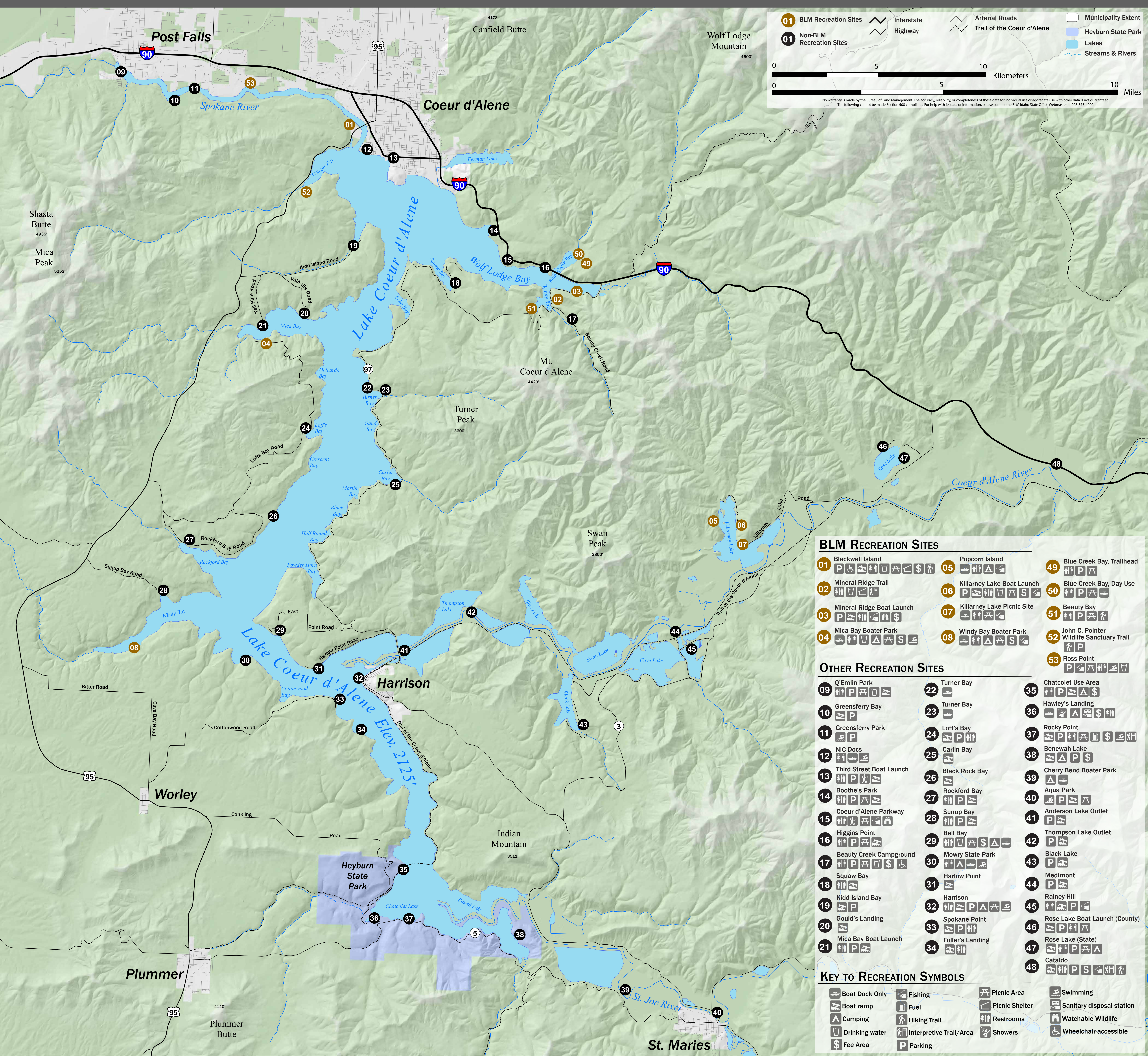




# Lake Coeur d'Alene | Recreation Sites

BUREAU OF LAND MANAGEMENT | IDAHO

BLM Coeur d'Alene Field Office  
3815 Schreiber Way,  
Coeur d'Alene, ID 83815  
208-769-5000  
www.blm.gov



**01** BLM Recreation Sites  
**01** Non-BLM Recreation Sites

Interstate Highway  
Arterial Roads  
Trail of the Coeur d'Alene

Municipality Extent  
Heyburn State Park  
Lakes  
Streams & Rivers

0 5 10 Kilometers  
0 5 10 Miles

No warranty is made by the Bureau of Land Management. The accuracy, reliability, or completeness of these data for individual use or aggregate use with other data is not guaranteed. The following cannot be made Section 508 compliant. For help with its data or information, please contact the BLM Idaho State Office Webmaster at 208-373-4000.

### BLM RECREATION SITES

- |                                     |                                      |  |
|-------------------------------------|--------------------------------------|--|
| <b>01</b> Blackwell Island          | <b>05</b> Popcorn Island             | <b>49</b> Blue Creek Bay, Trailhead                |
| <b>02</b> Mineral Ridge Trail       | <b>06</b> Killarney Lake Boat Launch | <b>50</b> Blue Creek Bay, Day-Use                  |
| <b>03</b> Mineral Ridge Boat Launch | <b>07</b> Killarney Lake Picnic Site | <b>51</b> Beauty Bay                               |
| <b>04</b> Mica Bay Boater Park      | <b>08</b> Windy Bay Boater Park      | <b>52</b> John C. Pointer Wildlife Sanctuary Trail |
|                                     |                                      | <b>53</b> Ross Point                               |

### OTHER RECREATION SITES

- |                                    |                            |  |
|------------------------------------|----------------------------|--|
| <b>09</b> Q'Emlin Park             | <b>22</b> Turner Bay       | <b>35</b> Chatcolet Use Area             |
| <b>10</b> Greensferry Bay          | <b>23</b> Turner Bay       | <b>36</b> Hawley's Landing               |
| <b>11</b> Greensferry Park         | <b>24</b> Loff's Bay       | <b>37</b> Rocky Point                    |
| <b>12</b> NIC Docs                 | <b>25</b> Carlin Bay       | <b>38</b> Benawah Lake                   |
| <b>13</b> Third Street Boat Launch | <b>26</b> Black Rock Bay   | <b>39</b> Cherry Bend Boater Park        |
| <b>14</b> Boothe's Park            | <b>27</b> Rockford Bay     | <b>40</b> Aqua Park                      |
| <b>15</b> Coeur d'Alene Parkway    | <b>28</b> Sunup Bay        | <b>41</b> Anderson Lake Outlet           |
| <b>16</b> Higgins Point            | <b>29</b> Bell Bay         | <b>42</b> Thompson Lake Outlet           |
| <b>17</b> Beauty Creek Campground  | <b>30</b> Mowry State Park | <b>43</b> Black Lake                     |
| <b>18</b> Squaw Bay                | <b>31</b> Harlow Point     | <b>44</b> Medimont                       |
| <b>19</b> Kidd Island Bay          | <b>32</b> Harrison         | <b>45</b> Rainey Hill                    |
| <b>20</b> Gould's Landing          | <b>33</b> Spokane Point    | <b>46</b> Rose Lake Boat Launch (County) |
| <b>21</b> Mica Bay Boat Launch     | <b>34</b> Fuller's Landing | <b>47</b> Rose Lake (State)              |
|                                    |                            | <b>48</b> Cataldo                        |

### KEY TO RECREATION SYMBOLS

- |                |                         |                |                           |
|----------------|-------------------------|----------------|---------------------------|
| Boat Dock Only | Fishing                 | Picnic Area    | Swimming                  |
| Boat ramp      | Fuel                    | Picnic Shelter | Sanitary disposal station |
| Camping        | Hiking Trail            | Restrooms      | Watchable Wildlife        |
| Drinking water | Interpretive Trail/Area | Showers        | Wheelchair-accessible     |
| Fee Area       | Parking                 |                |                           |