

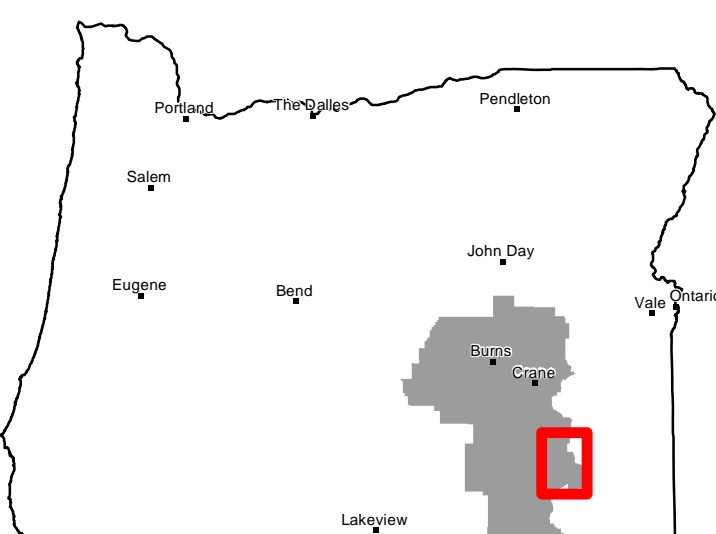
SPORTSMAN SERIES

ALBERSON, OREGON

2009

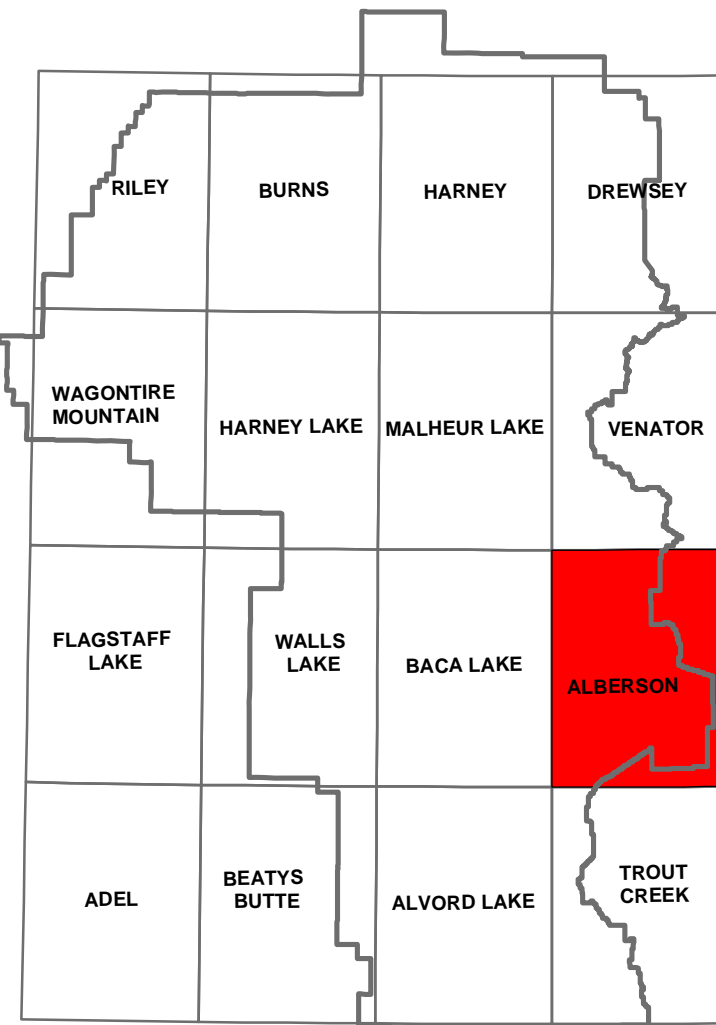


BURNS DISTRICT
U.S. Department of the Interior
Bureau of Land Management



Oregon

Burnes District BLM

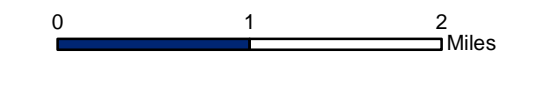
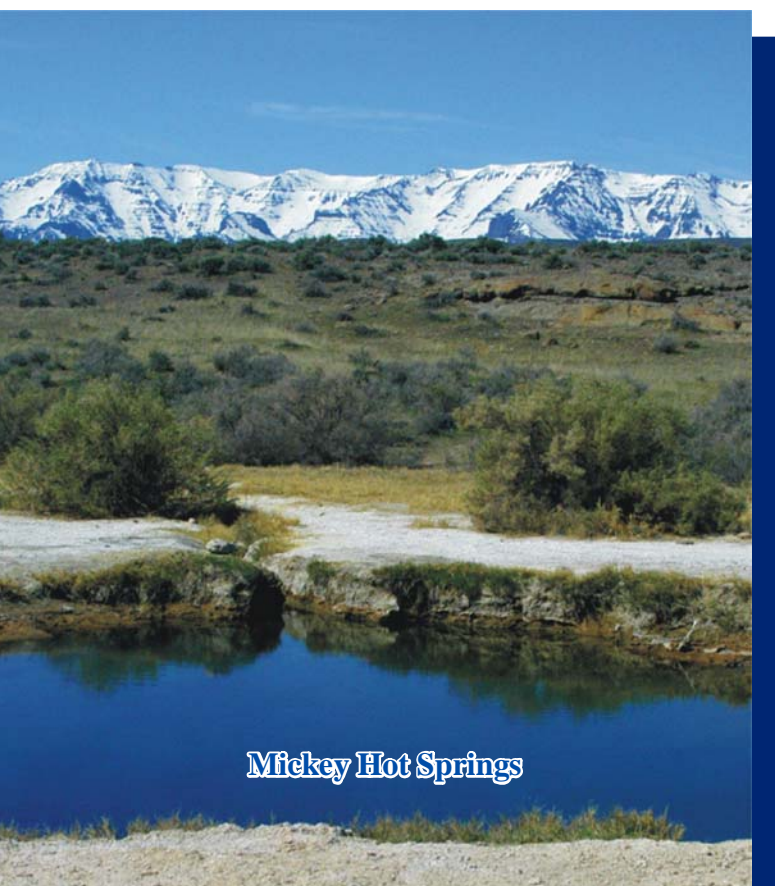
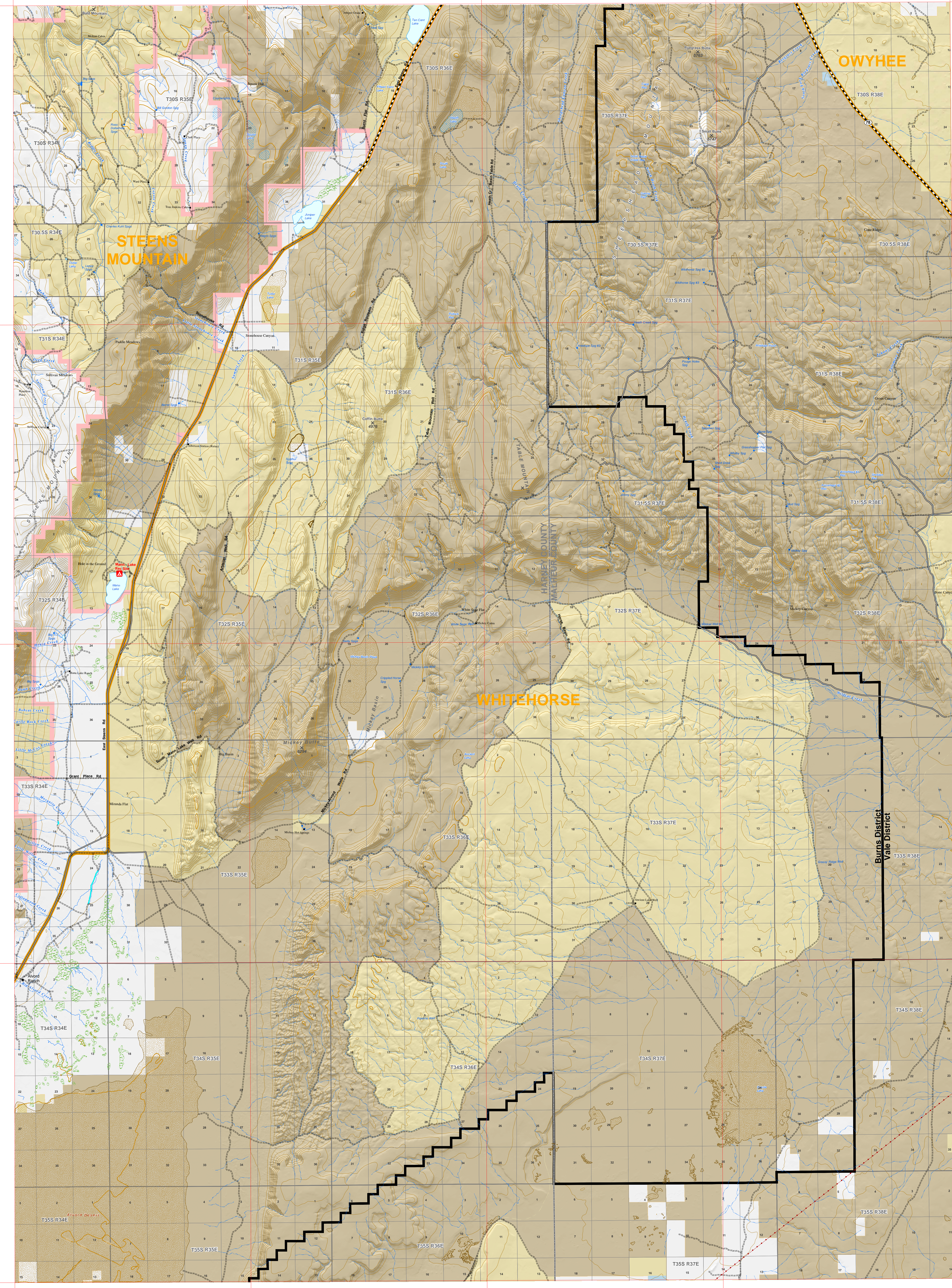


Quad Index

PLEASE RESPECT THE WISHES OF PRIVATE LANDOWNERS!
Ask permission before traveling on or through private lands.

Legend

- Bureau of Land Management Administered Land
- Bureau of Land Management Wilderness Study Area
- State Land
- Private Land
- ODFW Hunting Unit Boundary
- Steens Mountain Cooperative Management and Protection Area
- County Boundary
- BLM District Boundary
- Paved Road
- Non-Paved Improved Road
- Primitive or Unknown Road Surface
- Perennial Stream
- Intermittent Stream
- Undeveloped Water Source
- Perennial Lake
- Intermittent Lake
- Dry Lake
- Marsh
- 100 Foot Contour
- 1000 Foot Index Contour
- Powerline



Note: No warranty is made by the Bureau of Land Management as to the accuracy, reliability or completeness of these data for individual or aggregate use with other data. Original data was compiled from various sources and may be updated without notification. Ownership boundaries are accurate to within plus or minus 200 feet. Make local inquiry of roads conditions in remote areas. Some roads are impassible following severe weather. Roads displayed may not be all existing roads.

Please notify the Bureau of Land Management of any improvements or corrections that could be made to this product.

Submit comments to:
Burnes District BLM
28910 Hwy 20 West
Hines, Oregon 97738
(541) 573-4400
www.or.blm.gov/burnes/