

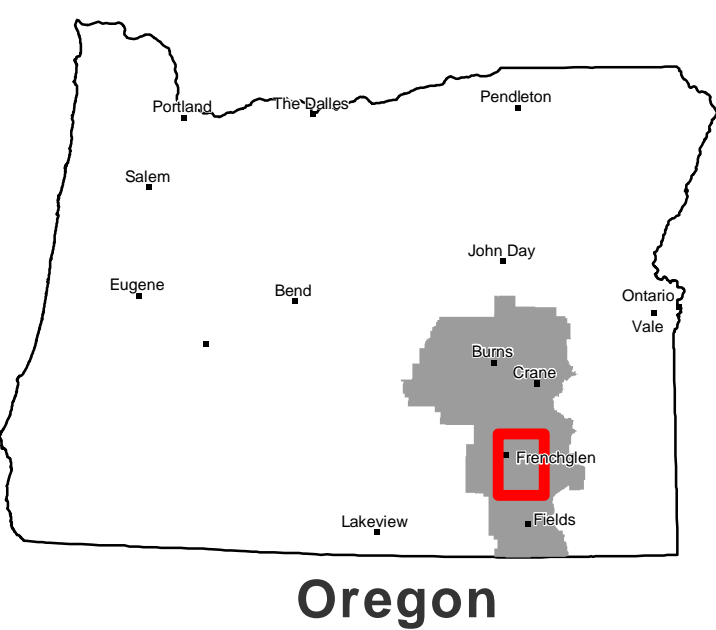
SPORTSMAN SERIES

BACA LAKE, OREGON

2015

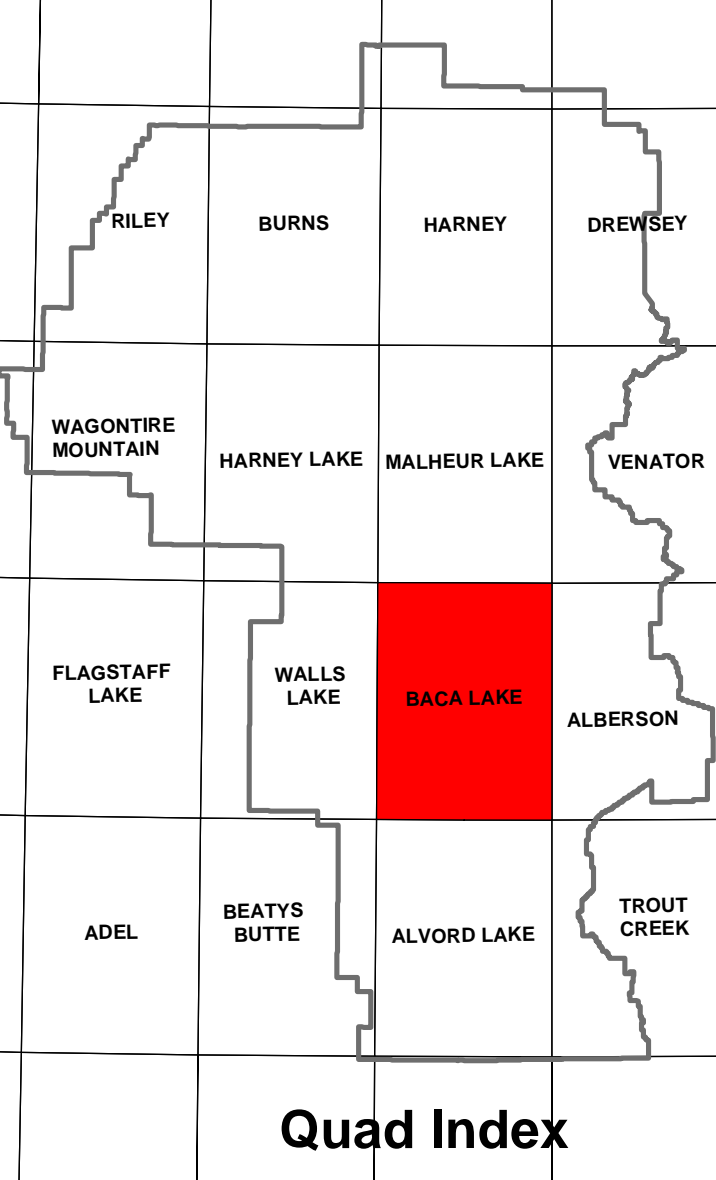


BURNS DISTRICT
U.S. Department of the Interior
Bureau of Land Management



Oregon

Burns District BLM



Quad Index

PLEASE RESPECT THE WISHES OF PRIVATE LANDOWNERS!
Ask permission before traveling on or through private lands.

Legend

- Bureau of Land Management Administered land
- Steens Mountain Wilderness
- Bureau of Land Management Wilderness Study Area
- Private Land (White)
- State Land
- U. S. Fish and Wildlife Land
- Steens Mountain Cooperative Management and Protection Area
- No Discharge of Firearms Zone
- Desert Trail**
- Locked Gate
- Paved Road
- Non-Paved Improved Road
- Primitive or Unknown Road Surface
- Authorized Use Only
- Undeveloped Water Source
- Wild and Scenic River
- Perennial Stream
- Intermittent Stream
- Perennial Lake
- Intermittent Lake
- Dry Lake
- Marsh
- 100ft Contours
- 1000ft Contours (Index)

** Oregon High Desert Trail begins at the Oregon/Nevada border near Denio, NV, and follows a 150+ mile corridor through SE Harney County and through the crest of Steens Mountain; Part of the Oregon State Parks Recreation Trail System; Limited road construction; Corridor concept - stick your route; See Desert Trail Association Series of Guides for detailed trail information

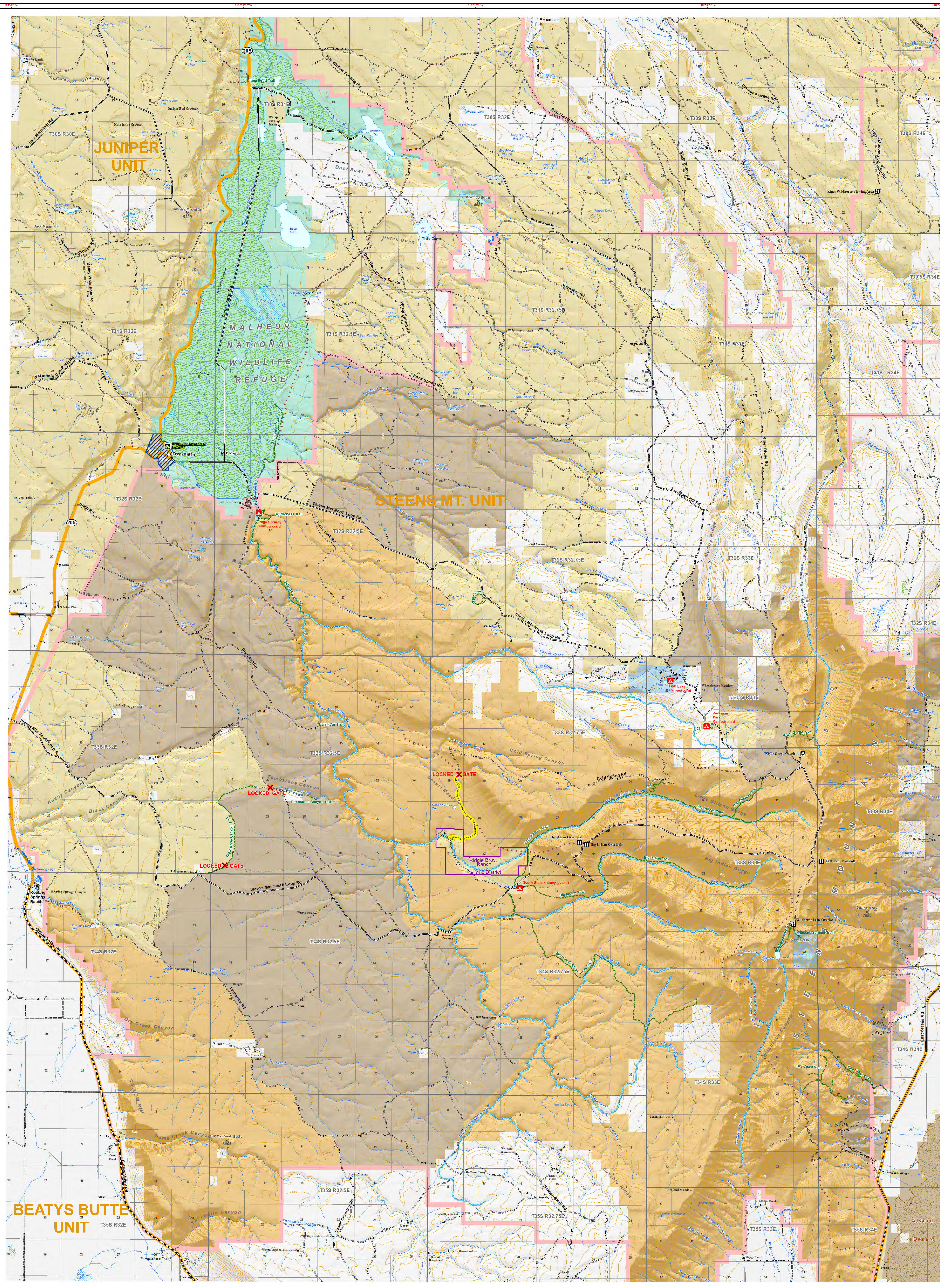


Bighorn Sheep

Note: No warranty is made by the Bureau of Land Management as to the accuracy, reliability or completeness of these data for individual or aggregate use with other data. Original data was compiled from various sources and may be updated without notification. Ownership boundaries are accurate to within plus or minus 200 feet. Make local inquiry of roads conditions in remote areas. Some roads are impassible following severe weather. Roads displayed may not be all existing roads.

Please notify the Bureau of Land Management of any improvements or corrections that could be made to this product.

Submit comments to:
Burns District BLM
28910 Hwy 20 West
Hines, Oregon 97738
(541) 573-4400
www.or.blm.gov/Burns/



BEATYS BUTTE UNIT

T35S R32E

T35S R32.5E

T35S R32.75E

T35S R33E

T35S R34E