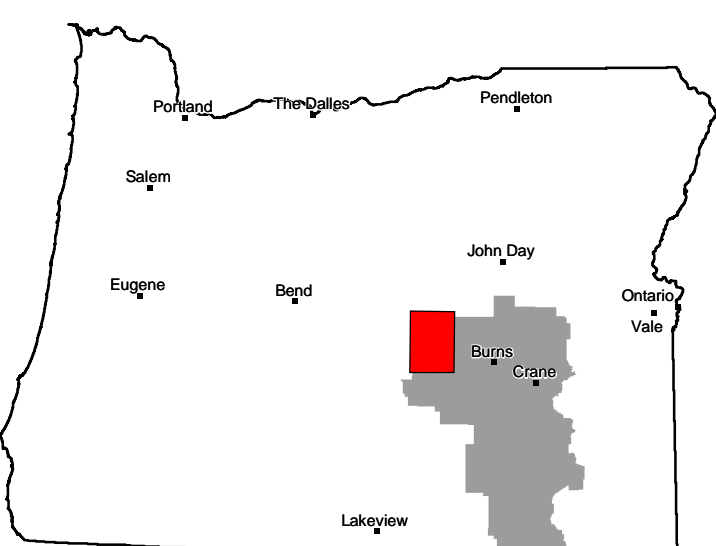


SPORTSMAN SERIES

RILEY, OREGON
2011

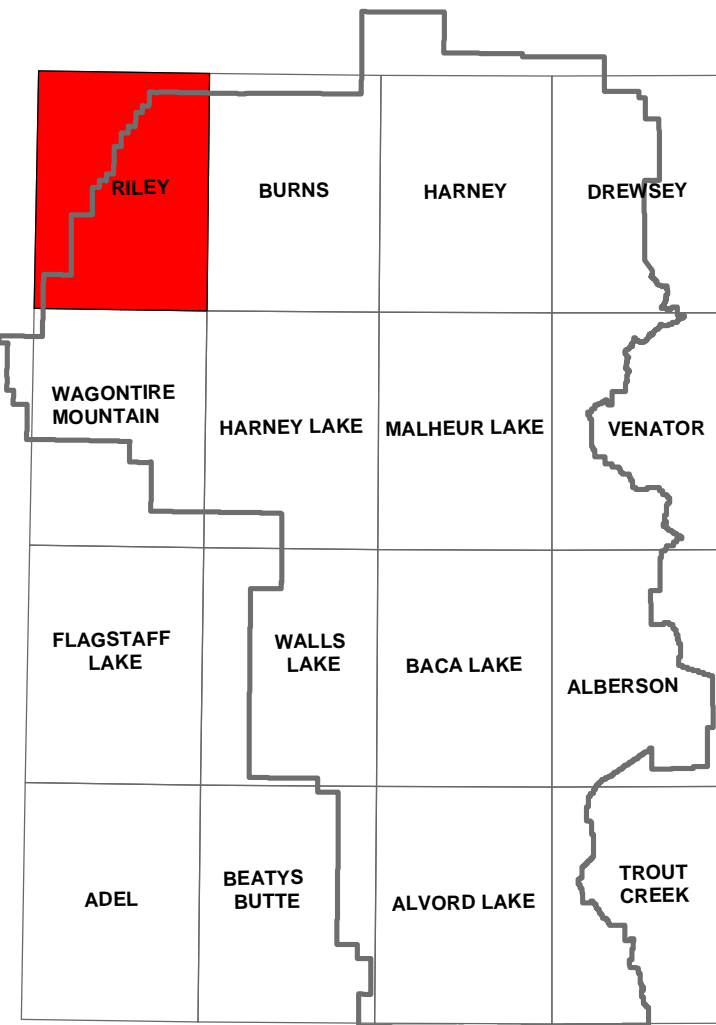


BURNS DISTRICT
U.S. Department of the Interior
Bureau of Land Management



Oregon

Burns District BLM

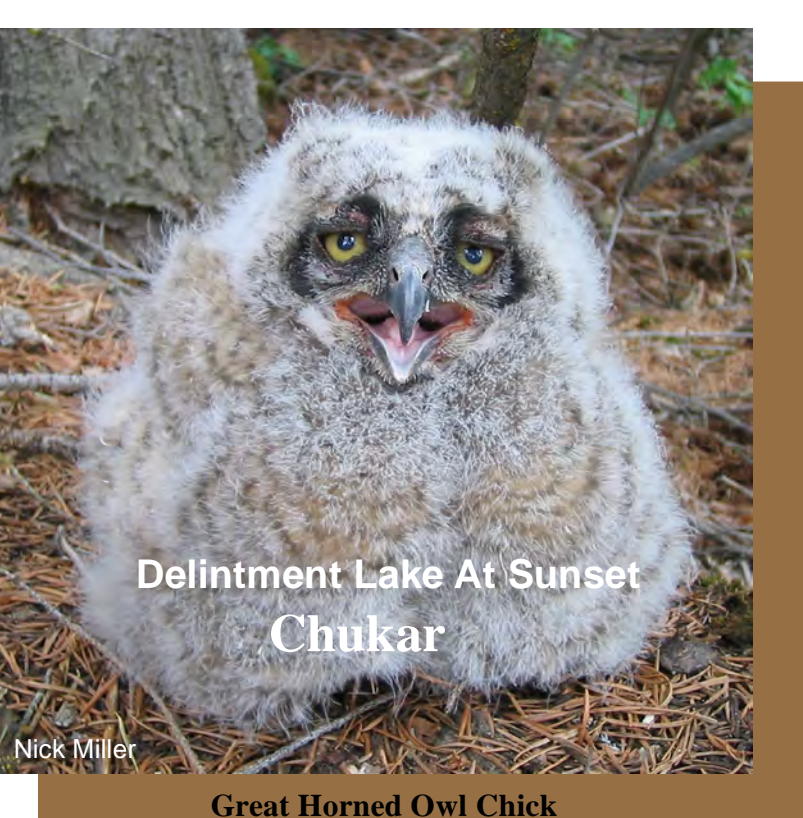
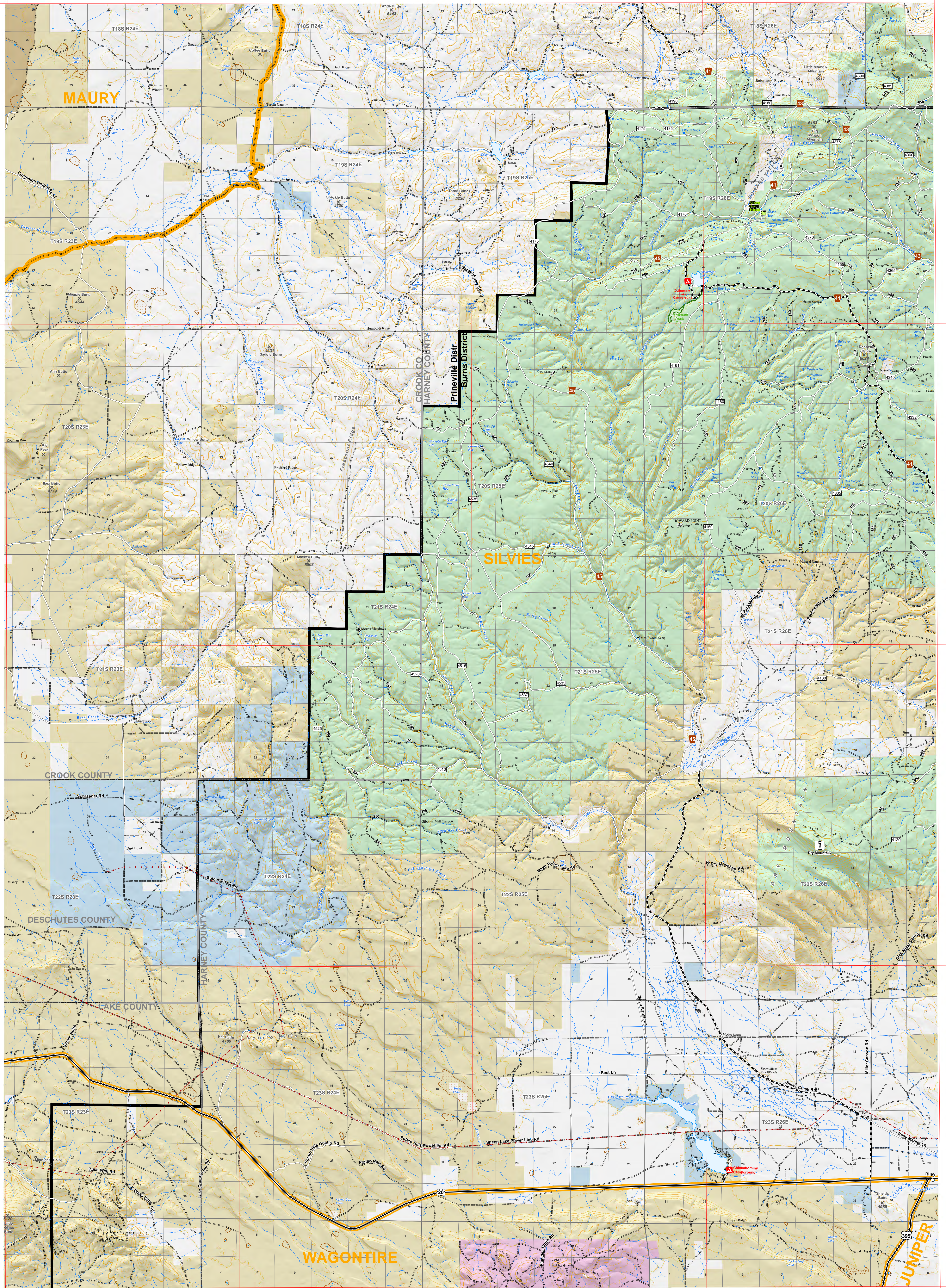


Quad Index

PLEASE RESPECT THE WISHES OF PRIVATE LANDOWNERS!
Ask permission before traveling on or through private lands.

Legend

- ODFW Hunting Unit Boundary
- Bureau of Land Management Wilderness Study Area
- Bureau of Land Management Administered Land
- U.S. Forest Service Land
- State Land
- Other Federal Land
- Private Land
- BLM District Boundary
- County Boundary
- Trail
- Paved Road
- Non-Paved Improved
- Natural/Unknown Road Surface
- Highways
- Perennial Stream
- Intermittent Stream
- Undeveloped Water Source
- Perennial Lake
- Intermittent Lake
- Dry Lake
- 100 Foot Contour
- Powerline



Delintment Lake At Sunset

Chukar

Great Horned Owl Chick

Note: No warranty is made by the Bureau of Land Management as to the accuracy, reliability or completeness of these data for individual or aggregate use with other data. Original data was compiled from various sources and may be updated without notification. Ownership boundaries are accurate to within plus or minus 200 feet. Make local inquiry of roads conditions in remote areas. Some roads are impassible following severe weather. Roads displayed may not be all existing roads.

Please notify the Bureau of Land Management of any improvements or corrections that could be made to this product.

Submit comments to:
Burns District BLM
28910 Hwy 20 West
Hines, Oregon 97738
(541) 573-4400
www.or.blm.gov/Burns/