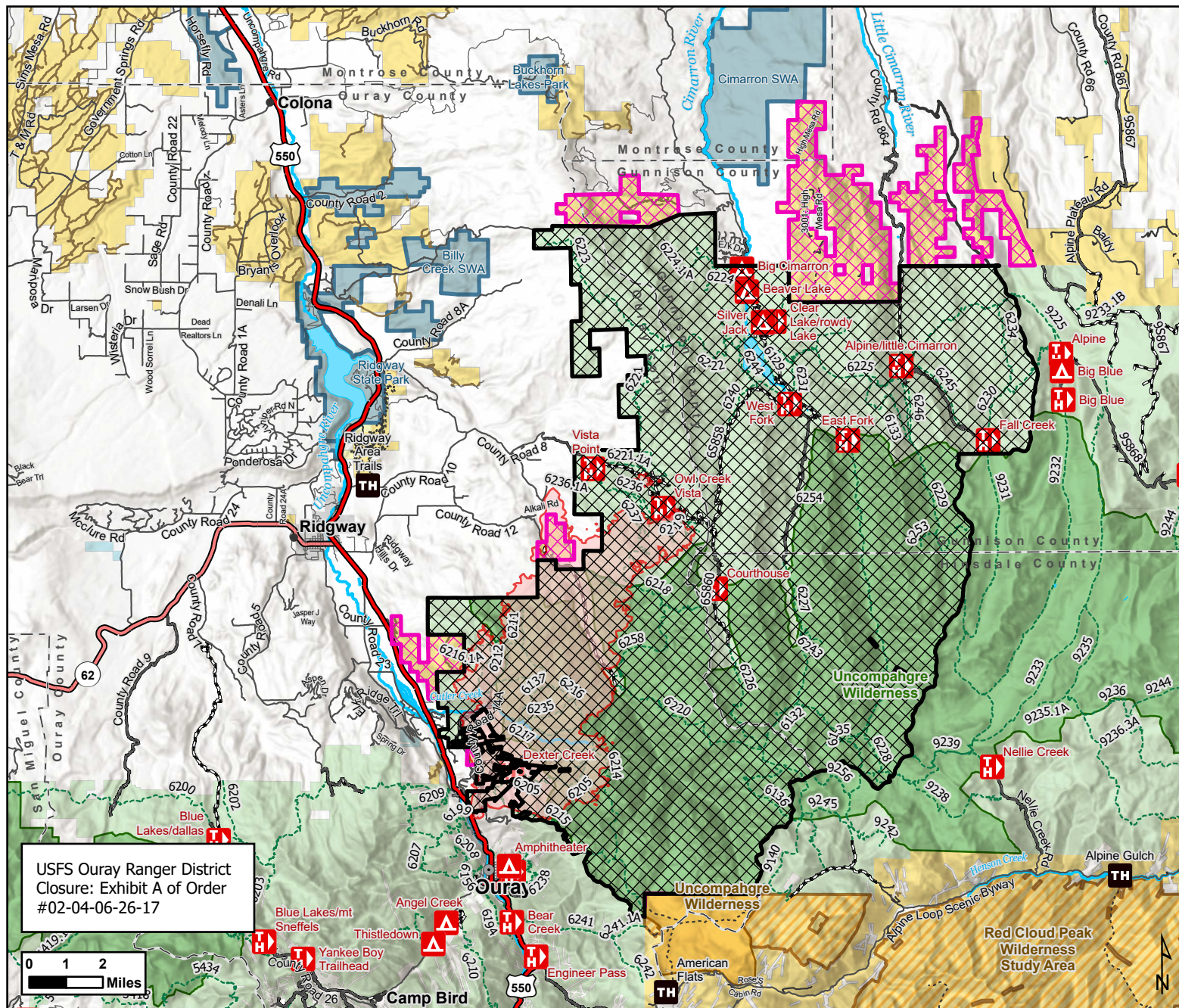




Gold Mountain Fire Emergency Public Land Closures

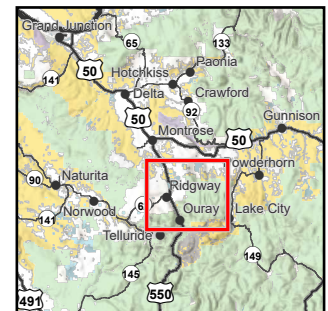
BLM Uncompahgre Field Office
 USFS Ouray Ranger District
 2465 S Townsend Ave
 Montrose, CO 81401
 (970) 240-5300



USFS Ouray Ranger District
 Closure: Exhibit A of Order
 #02-04-06-26-17

- Wildfire**
 - Gold Mountain Fire
- Emergency Closures**
 - BLM Closure Area
 - USFS Closure Area
- Recreation**
 - BLM Trailhead
 - FS Campground
 - FS Trailhead
- Transportation**
 - US Highway
 - State Highway
 - County or Local Road
 - Local or Private Road
- USFS Routes**
 - USFS Trails
 - Roads open to all vehicles
 - Roads open to highway legal vehicles only
- BLM Routes**
 - BLM Road
 - BLM Primitive Road
 - BLM Trail (Single Track)
 - BLM Route (Not Assessed)
- Wilderness**
 - BLM Wilderness
 - BLM Wilderness Study Area
 - USFS Wilderness
- Surface Management**
 - Bureau of Land Management
 - Bureau of Reclamation
 - Private
 - State
 - City Park / State Park / State Wildlife Area
 - US Forest Service
 - Incorporated Area

Map Produced by BLM Uncompahgre Field Office Staff
 Date: 7/2/2026
 Map Scale: 1:250,000
 Coordinate System: NAD 1983 UTM Zone 13N
 CO Reference System: U.S. PLSS NMM / 6th M



DISCLAIMER: No warranty is made by the Bureau of Land Management as to the accuracy, reliability, or completeness of these data for individual use or aggregate use with other data. Decisions in this document only apply to BLM lands. Routes depicted on non-BLM lands are displayed for information purposes only and do not grant access to non-BLM lands.