



U.S. Department of the Interior
Bureau of Land Management

TEMPORARY CLOSURE ORDER

Bureau of Land Management, California

Closure of Certain Lands outside the Montgomery Pass Wild Horse Territory

Action: Pursuant to the Federal Land Policy and Management Act of 1976 (FLPMA), as amended, and 43 CFR § 8364.1, the Bureau of Land Management (BLM) provides notice that, beginning on July 7th, 2026, all public lands in an area west of the Montgomery Pass Wild Horse Territory as shown on attached maps are temporarily closed to the public.

The United States Department of Agriculture, Forest Service, Inyo National Forest (INF) is conducting a wild horse drive trap gather of horses to capture excess wild horses which have strayed outside the boundaries of the Montgomery Pass Wild Horse Territory. The BLM has determined that temporary closure of the affected land is necessary for the Forest Service to conduct a safe, efficient, and successful wild horse gather while ensuring humane care and treatment of the gathered animals. The closure is necessary to protect persons, property, public lands, resources, and to avoid conflicts among public land users.

Affected Area: All public lands in Mono County, CA east of Mono Lake to a point midway through the Adobe Valley as well as an area just east and north of the intersection of Highway 395 and Highway 167 as shown on attached maps. The closed area encompasses the public lands surrounding active trapping locations and temporary holding facilities outside the Montgomery Pass Wild Horse Territory.

Prohibitions: All forms of public access and entry are prohibited within the temporary closure area during gather operations. Entry into the closure area on unpaved roads is prohibited but State Highways that go through the closure area remain open.

Exemptions: Observers who are properly escorted by Forest Service or BLM personnel in accordance with the Forest Service and BLM's gather observation policies will be allowed in the closure area during operations.

The closure does not apply to Federal, State, and local officers and employees in the performance of their official duties; members of organized rescue or firefighting forces in the performance of their official duties; and persons with written authorization from the BLM. The closure does not apply to activities conducted under contract with the BLM or Forest Service, agency personnel monitoring the gather, or activities conducted under an approved plan of operations or permit. Authorized users must have in their possession a written permit or contract from the BLM, signed by the authorized officer.

Penalties: *Any person who violates the temporary closures or restrictions in this order may be tried before a United States magistrate and fined in accordance with 18 U.S.C. 3571, imprisoned no more than 12 months under 43 U.S.C. 1733(a) and 43 CFR 8360.0-7, or both. In accordance with 43 CFR 8365.1-7, State or local officials may also impose penalties for violations of State law.*

Effective: This Order is effective starting July 7, 2026, and will remain in effect through completion of gather operations or until rescinded.

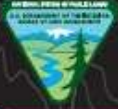
For Further Information Contact: Heather Stone, Acting Field Manager, BLM_CA_Web_BI@blm.gov, 760-872-5000

Executed by:

HEATHER
STONE

Digitally signed by HEATHER
STONE
Date: 2026.07.02 14:42:54 -07'00'

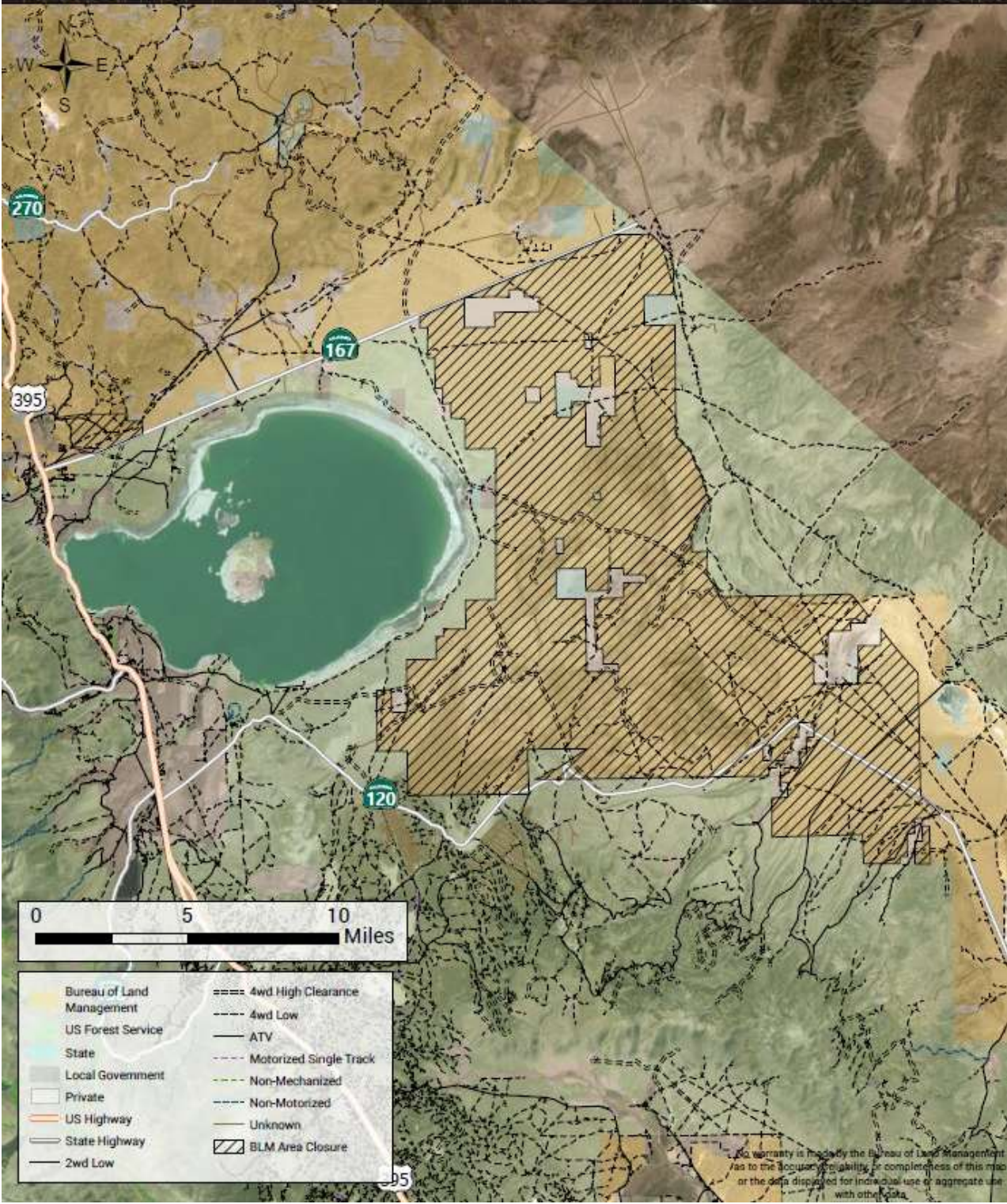
Heather Stone, Acting Field Manager, Bishop Field Office



Area Closure

Bureau of Land Management

Bureau of Land Management
 Bishop Field Office
 351 Pacu Lane, Suite 100
 Bishop, CA, 93514
 760-872-5000





Area Closure

Goat Ranch

Bureau of Land Management
Bishop Field Office
351 Pacu Lane, Suite 100
Bishop, CA, 93514
760-872-5000

