

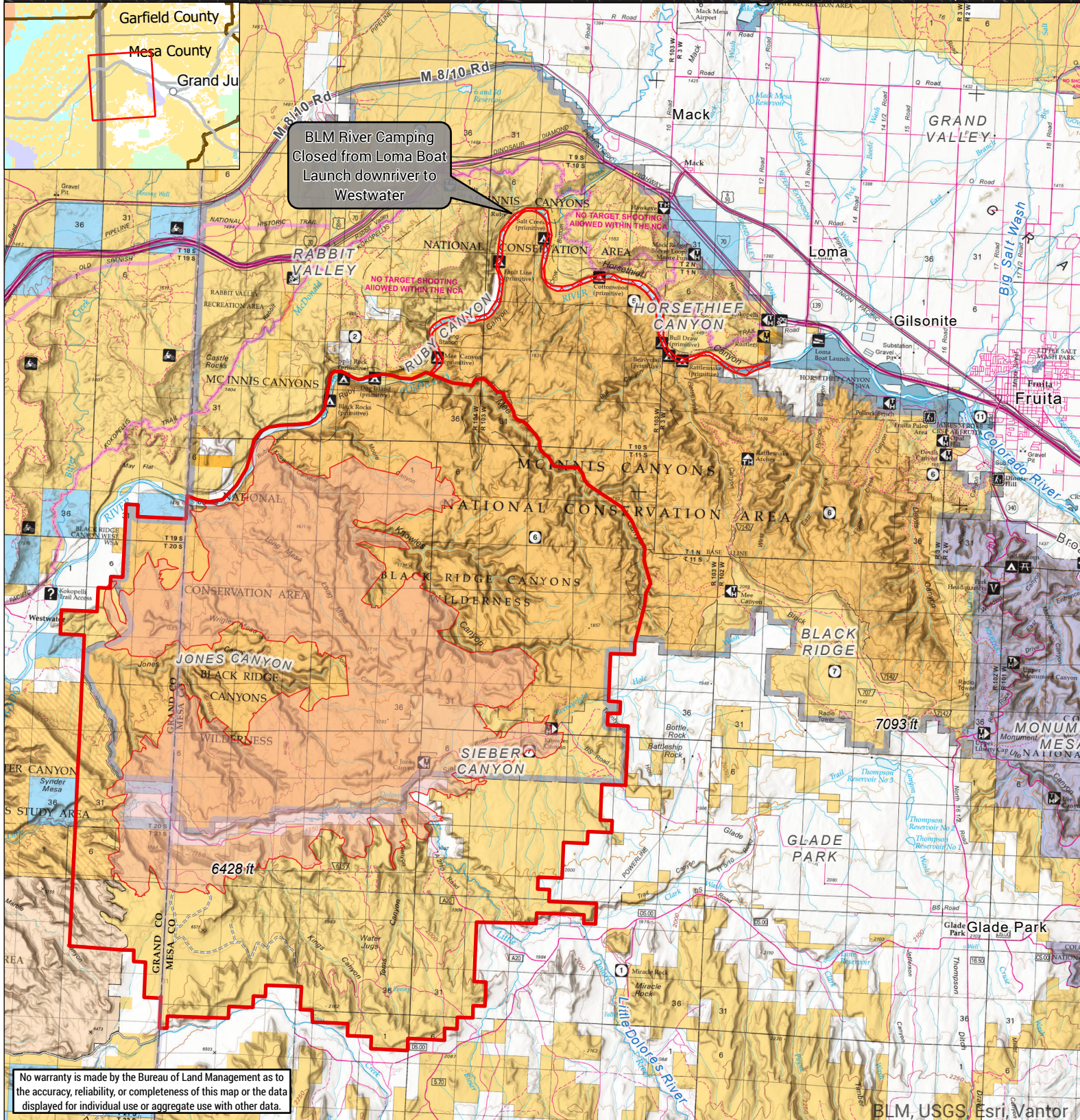


# Snyder Fire Area Closure

Bureau of Land Management  
Grand Junction Field Office  
2815 H Road  
Grand Junction, CO 81506  
970-244-3000

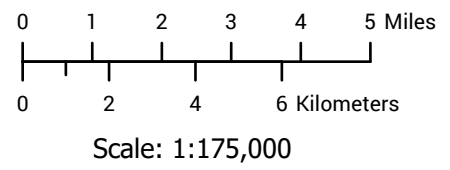


Map Created: 7/2/2026



No warranty is made by the Bureau of Land Management as to the accuracy, reliability, or completeness of this map or the data displayed for individual use or aggregate use with other data.

- Closure Boundary - 02 July 2026 Update
- River Camping Closure
- Fire Perimeter - 02 July 2026
- Bureau of Land Management
- Bureau of Reclamation
- State, County, City: Areas
- National Park Service
- Other Federal
- Private
- State



BLM, USGS, Esri, Vantor