



United States Department of the Interior



BUREAU OF LAND MANAGEMENT
Monticello Field Office
365 N Main Street
Monticello, UT 84535
<http://www.blm.gov/ut>

July 1, 2026

FIRE PREVENTION ORDER: UT-CYD-2026-02-Amended

Due to public safety concerns and to facilitate suppression efforts for the Babylon Fire (#UT-MLF-5112), pursuant to Title 43, Code of Federal Regulations (CFR), Section 9212.2 (a), (b)(1), the following Bureau of Land Management lands administered by the Monticello Field Office are closed to public entry. These lands are described as follows:

All BLM-managed lands located west of the Harts Draw Road and north up the Indian Creek Corridor all the way to Indian Creek Falls, the Shay Mesa area, and west into Beef Basin, Dark Canyon, and Sweet Alice areas. Additional areas include, the Brushy Basin Road north to the Forest Service Boundary and Peter's Point. Please see the associated map.

Under 43 CFR 9212.1 Prohibited acts: Unless permitted in writing by the authorized officer, the following acts are prohibited until further notice:

Entry on roads, trails, or cross-country travel upon any lands designated in this closure order.

EXEMPTIONS

This order does not apply to Federal, State, and local officers and employees in the performance of their official duties; members of organized rescue or firefighting forces in the performance of their official duties; and persons with written authorization from the BLM.

This order does not apply to activities conducted under contract with the BLM, agency personnel monitoring the event, or activities conducted under an approved plan of operations. Authorized users must have in their possession a written permit or contract from the BLM, signed by the authorized officer.

An exemption does not absolve an individual or organization from liability or responsibility for any fire started by the exempted activity.

PENALTIES

Anyone in violation of this Fire Prevention Order may be subject to civil liability or criminal prosecution under any applicable law or BLM regulation. A violation of this Order may be classified as a Class A Misdemeanor Offense under 43 USC 1733(a) FLPMA, 18 USC 3559. Pursuant to 18 USC 3571, if the violation does not result in death, anyone who violates this order may be fined not more than \$100,000 and/or imprisoned for not more than 12 months. Liability for total fire suppression and damage costs incurred will be borne by the responsible party.

This Order will be effective immediately upon signature and in effect until order is rescinded.

Nicollee Gaddis-Wyatt
District Manager

Date



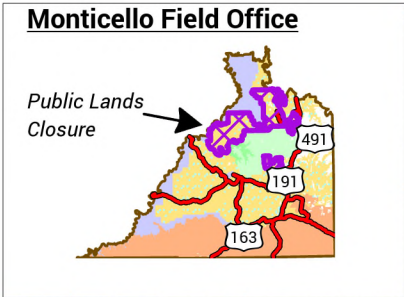
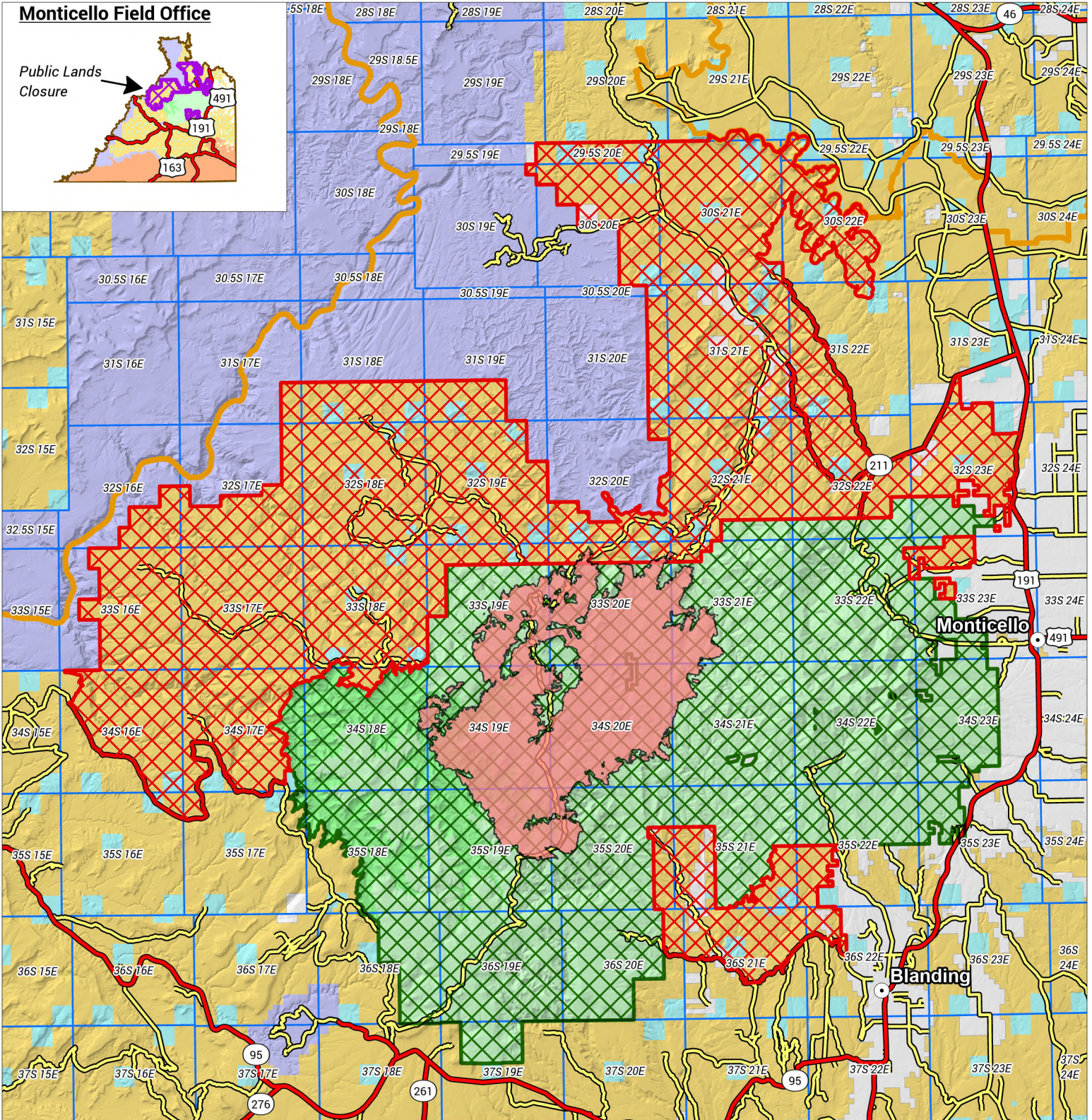
Babylon Fire Closure

Monticello Field Office

Bureau of Land Management, Utah
Monticello Field Office
356 N Main
Monticello, UT 84535



7/1/2026



- Surface Management Agency**
- Bureau of Land Management (BLM)
 - National Park Service (NPS)
 - Other Federal
 - Private
 - State

- State Parks and Recreation
- US Forest Service (USFS)
- USFS Wilderness Area
- PLSS Township
- City

- Transportation**
- State and Federal Highways
 - B Roads (Maintained)

- BLM Public Lands Closure
- USDAFS Public Lands Closure
- NIFC FIRMS - Fire Perimeter



Current as of: 2026.07.01 - 1430 MDT

No warranty is made by the Bureau of Land Management as to the accuracy, reliability, or completeness of this map or the data displayed for individual use or aggregate use with other data.