



# United States Department of the Interior



BUREAU OF LAND MANAGEMENT  
Northern California District Office  
6640 Lockheed Drive  
Redding, CA 96002

<https://www.blm.gov/office/northern-california-district-office>

## **TIMBER SALE NOTICE**

Contract No. CAN06-TS-2026.0002  
Contract Name: Forks of Butte Timber Sale  
Notice Date: June 1<sup>st</sup>, 2026

NOTICE IS HEREBY GIVEN that the Bureau of Land Management will offer for sale timber as described herein. This is a sale notice and prospectus only and does not contain all contract provisions and exhibits. Items listed below are a summary only of certain contract provisions and do not contain the exact wording as shown in the contract. A copy of the timber sale contract, along with all exhibits, are available for inspection at the above office, or by email. All bidders should inspect these documents prior to bidding on this sale.

An ENVIRONMENTAL ASSESMENT, DOI-BLM-CA-N060-2026-0011-EA and Decision Record were prepared for this sale. These documents are available for inspection as background for this sale at the Redding Field Office.

The Bureau of Land Management will offer for sale timber as described below. The right is hereby reserved to waive technical defects in this supplement.

### **Note: This is a sealed-bid scale sale.**

DATE, PLACE, AND TYPE OF SALE: Sealed bids will be received by the Redding Field Office Manager, or her representative, at 6640 Lockheed Drive Redding CA 96002. Sealed bids must be received by 12:00pm on June 26<sup>th</sup>, 2026.

A WRITTEN BID on Form 5440-9 at not less than the appraised price on a unit basis per species shall be required to participate in sealed bidding. A required Bid Deposit of \$100 shall be in the form of cash, money order or bank draft, cashier's or certified check (made payable to the U.S. Department of Interior – BLM), bid bonds of corporate surety shown on the approved list of the U.S. Treasury Department, or an irrevocable letter or credit; regardless of whether the bid price is above or below the advertised price. Personal checks will not be accepted.

Purchasers have the option to submit bid prices that are below the advertised price; however, bids must not be less than \$.01 per thousand board feet. Bids must include both product and service item prices; bids where the service items' total price is greater than the product total price will not be considered. Bids must also be accompanied by both a technical approach and relevant experience doing similar work in the past. Both bid amounts as well as the supporting documentation will be used to select a successful bid.

PRE-AWARD QUALIFICATIONS. The high bidder may be required to furnish information to determine the ability to perform the obligations of the contract. If the high bidder is determined not qualified, responsible or refuses to respond within fifteen (15) days of a request for information pertaining to qualifications, the contract may be offered and awarded for the amount of the high bid to the highest of the bidders who is qualified, responsible, and willing to accept the contract.

THE SUCCESSFUL BIDDER, as a condition of award, will be required to complete and/or sign the following forms:

1. Form 1140-6, Independent Price Determination Certificate, certifying that the bid was arrived at by the bidder or offeror independently and was tendered without collusion with any other bidder or offeror.
2. Form 1140-7, Equal Opportunity Affirmative Action Program Representation.
3. Form 1140-8, Equal Opportunity Compliance Report Certification.
4. Form 5450-17, Export Determination.

PERFORMANCE BOND: Prior to award of the contract to the high responsive bidder, a performance bond in an amount not less than twenty (20) percent of the total purchase price or 30,000 whichever is greater will be required. See Sections 3 and 39 of the Contract for more information.

INSTALLMENT PAYMENTS may be authorized for this sale. Required installments will be determined by BLM, and will not be less than 10% of the total purchase price. See Section 3 of the contract regarding other methods of payment.

Attachments: Timber Sale Prospectus  
Form 5440-9 Deposit and Bid for Timber/Vegetative resource  
Form 1140-4 Notice of requirement for Certification of Non-segregated Facilities  
Exhibit A Sale Area Map  
Exhibit D Road Construction and Renovation Map

For any further information, email Jess Paoli at [jpaoli@blm.gov](mailto:jpaoli@blm.gov) or Jason Schlafmann at [jschlafmann@blm.gov](mailto:jschlafmann@blm.gov) or call the Redding Field Office at (530) 224-2100.

# PROSPECTUS

Scale Sale  
Sale Date: June 1<sup>st</sup>, 2026

Redding Sale No.: CAN06-TS-2026.0002  
Butte County, California: PD: Sealed Bid

Sale Name: Forks Of Butte Timber Sale  
Minimum Bid Deposit Required: \$100

All timber designated for cutting on: T24N R3E Sections 26, 27, 34, 35, Mount Diablo Meridian

## Required Harvest Units 1-3

Approx. Number Merch. Trees	Species	Est. Vol. MBF 16' Log	Appraised Price Per MBF **
3,479	Douglas Fir	660.1	\$.01
208	Incense-Cedar	20.9	\$.01
93	Ponderosa Pine	10.2	\$.01
27	White Fir	8.8	\$.01
8	Sugar Pine	1.3	\$.01
<b>3815</b>		<b>711</b>	

## Optional Item 2 – Biomass/Biproducts

Approx. No. of Units (Tons)	Species	Appraised Price Per ton	Estimated Volume Times Appraised Price
10,000	All	\$.01	<b>\$100</b>

## Service Item 1 – Cull logs/Biproduct Yarding and Piling

Approx. No. of Units (Tons)	Species	Appraised Price Per ton	Estimated Volume Times Appraised Price
10,000	All	N/A	N/A

THE VOLUMES LISTED herein are estimates only, based on 16-foot taper breaks, which must be taken into consideration if comparisons are made with volume predictions based on other standards. No sale shall be made for less than the total purchase price, without regard to the amount bid per unit, even though quantity of timber cut or removed or designated for taking is more or less than the estimated volume or quantity so listed.

## LOG EXPORT AND SUBSTITUTION RESTRICTIONS:

All timber sales, including timber from Federal rights-of-ways, shall be subject to the restrictions relating to the export and substitution of unprocessed timber from the United States in accordance with P.L. 94-165 and 43 CFR 5400 and 5424 as amended.

All timber offered for sale hereunder is restricted from export from the United States in the form of unprocessed timber and is prohibited from being used as a substitute for exported private timber.

CRUISE INFORMATION:

The Douglas-fir and ponderosa pine greater than or equal to a 10” diameter class have been cruised using a probability proportional to prediction (3P) cruise method and the white fir, sugar pine, incense-cedar were inventoried using a 100% cruise on all trees marked by Jess Paoli, Jason Schlafmann, Mat Lochner, and the National Salvage Implementation Team (NSIT). The sale area has been marked, cruised and their volume computed on form class tables for estimating volume in 16-foot lengths. This volume is total sale volume. The cruise documentation and cruise of record are available for viewing at the Redding, CA Field Office.

CUTTING AREA: An area of approximately 159 acres is to be partially cut for forest health. See Exhibit A for details. Boundaries of Harvest Areas are marked with orange flagging, orange paint on trees, and signs when adjacent to private and USFS ownership. Stream exclusion areas within the cutting area are flagging with blue and white candy-striped flagging.

TIMBER ACREAGE: Unit 1: 99 Acres  
Unit 2: 8 Acres  
Unit 3: 52 Acres

Acres by strata/treatment type (required harvest units):

Strata	Treatment	Avg Volume/Acre (mbf)	Acres
1	Thin to 100-120 ft <sup>2</sup> /acre	4.4	60
2	Thin to 120-160 ft <sup>2</sup> /acre	4.5	99
ALL		4.5	159

ACCESS: Access to the sale area is provided by Government and County-controlled roads.

DIRECTIONS TO SALE AREA: From Skyway Road, northeast of Magalia, California travel north and turn left on Powelton Road. Continue until the DeSabra Ditch and turn right onto Ditch Grade Road (Right after the Forks of Butte BLM sign). Refer to timber sale Exhibits A and D for further details to timber sale units.

ROAD MAINTENANCE: Approximately eight and a half (8.5) miles of haul route will need to be graded and have ditches pulled after operations, as shown in Exhibit D.

DURATION OF CONTRACT will be 36 months for cutting and removal of timber. The contract contains SPECIAL PROVISIONS regarding logging, environmental protection, road renovation, road use, road maintenance, fire protection, slash disposal, and log exporting. Log scaling will be required under the terms of this contract.

NOTES:

1. Bids for this project may go below the advertised minimum, however if service costs are greater than product cost no contract shall be awarded
2. Bids must be accompanied with a technical approach as well as relevant experience to show that the winning purchaser can complete work to the standards set out in the contract. These documents will be taken into consideration when selecting a winning bid.
3. A revised Special Provision has been added to the contract which enables the Contracting Officer to suspend the contract to facilitate protection of certain plant or animal species, and/or to modify or terminate the contract when necessary to: (1) Comply with the Endangered Species Act, or; (2) Comply with a court order, or; (3) Protect

species which were identified for protection through survey and manage and/or protection buffer standards and guidelines established in the ROD and RMP.

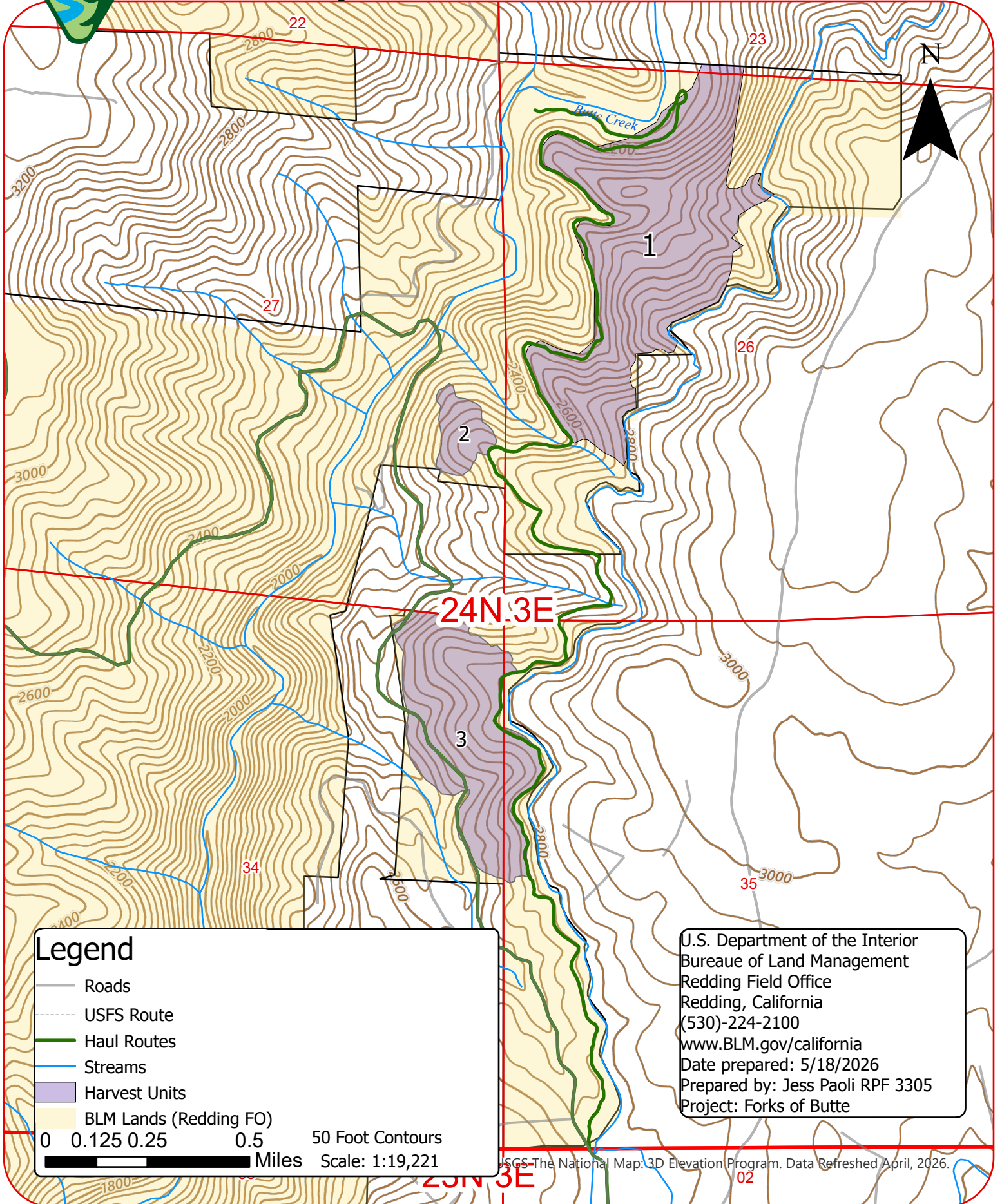
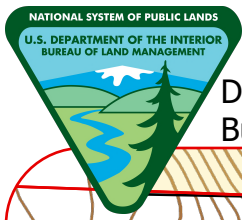
4. Purchaser's operations shall conform to the limitations or requirements of "Project Activity Levels" (PAL) for the Plumas National Forest. The PAL is available by calling 530-283-2050 or toll free (866) 242-9941 or by checking the USFS Region 5 website.
5. Seasonal operating restrictions apply to this sale regarding road work, falling, bucking, yarding, loading, hauling and machine piling. Refer to Section 42(B)(3).
6. Where possible, trees will be whole tree yarded. Landing piles will be created for slash.
7. Aged snags and all hardwoods not threatening roads should be retained unless deemed a safety hazard for operations.
8. Temporary roads will be decommissioned following operations.
9. All native-surfaced roads to be renovated shall be used for harvest operations during the dry season of each calendar year, then winterized in the same respective calendar year.
10. Access to the project area is available via County and Bureau of Land Management (BLM) roads. If the County road is chosen for access, then those ~2 miles of unpaved roads will need to be maintained to a condition equal to current conditions or better and may need to be watered to reduce dust.
11. Log Brand is required and to be furnished by purchaser.
12. Skid trails and temporary spur roads will be decommissioned following operations. Refer to Exhibit C.
13. All logging equipment will be cleaned and inspected prior to operating on BLM lands to prevent the spread of noxious weeds.
14. No heavy equipment will be allowed within stream protection areas delineated with blue and white striped flagging. Trees may be hand-felled within these areas, but equipment will not be allowed to enter to reduce disturbance.
15. Trees felled but not yarded should be left on contour to mitigate erosion.
16. Wherever possible, existing roads and skid trails will be utilized, and new construction needs to be approved by forest officer.

17. In areas with large tanoak mortality purchaser shall yard and pile material greater than 10 inches in diameter and 10 feet in length at landing areas and or in woods piles.

18. All special protection area flagging must be followed. In areas of unmarked flowing water a stream buffer of 50 feet is in place.

A full list of special provisions and Exhibit C (road stipulations) can be obtained by contacting Jess Paoli at the Redding BLM Field Office.

All other project design features and environmental protections can be found on [Eplanning.blm.gov](http://Eplanning.blm.gov) under Forks of Butte or DOI-BLM-CA-N060-2025-0019-EA.

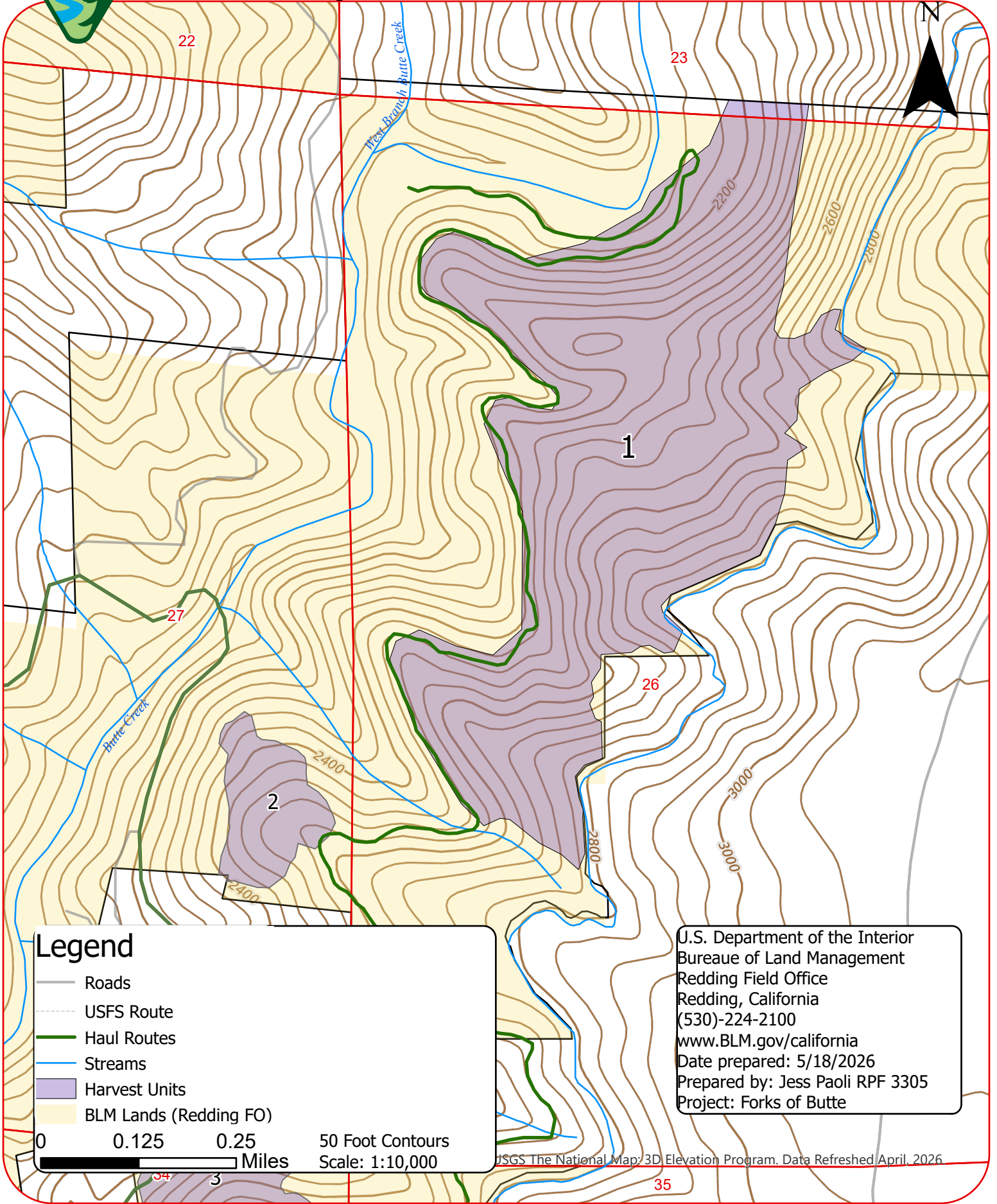
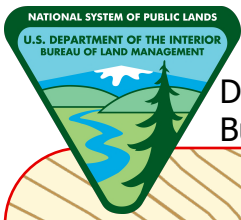


**Legend**

- Roads
- - - USFS Route
- Haul Routes
- Streams
- Harvest Units
- BLM Lands (Redding FO)

0 0.125 0.25 0.5 50 Foot Contours  
Miles Scale: 1:19,221

J.S. Department of the Interior  
Bureau of Land Management  
Redding Field Office  
Redding, California  
(530)-224-2100  
[www.BLM.gov/california](http://www.BLM.gov/california)  
Date prepared: 5/18/2026  
Prepared by: Jess Paoli RPF 3305  
Project: Forks of Butte

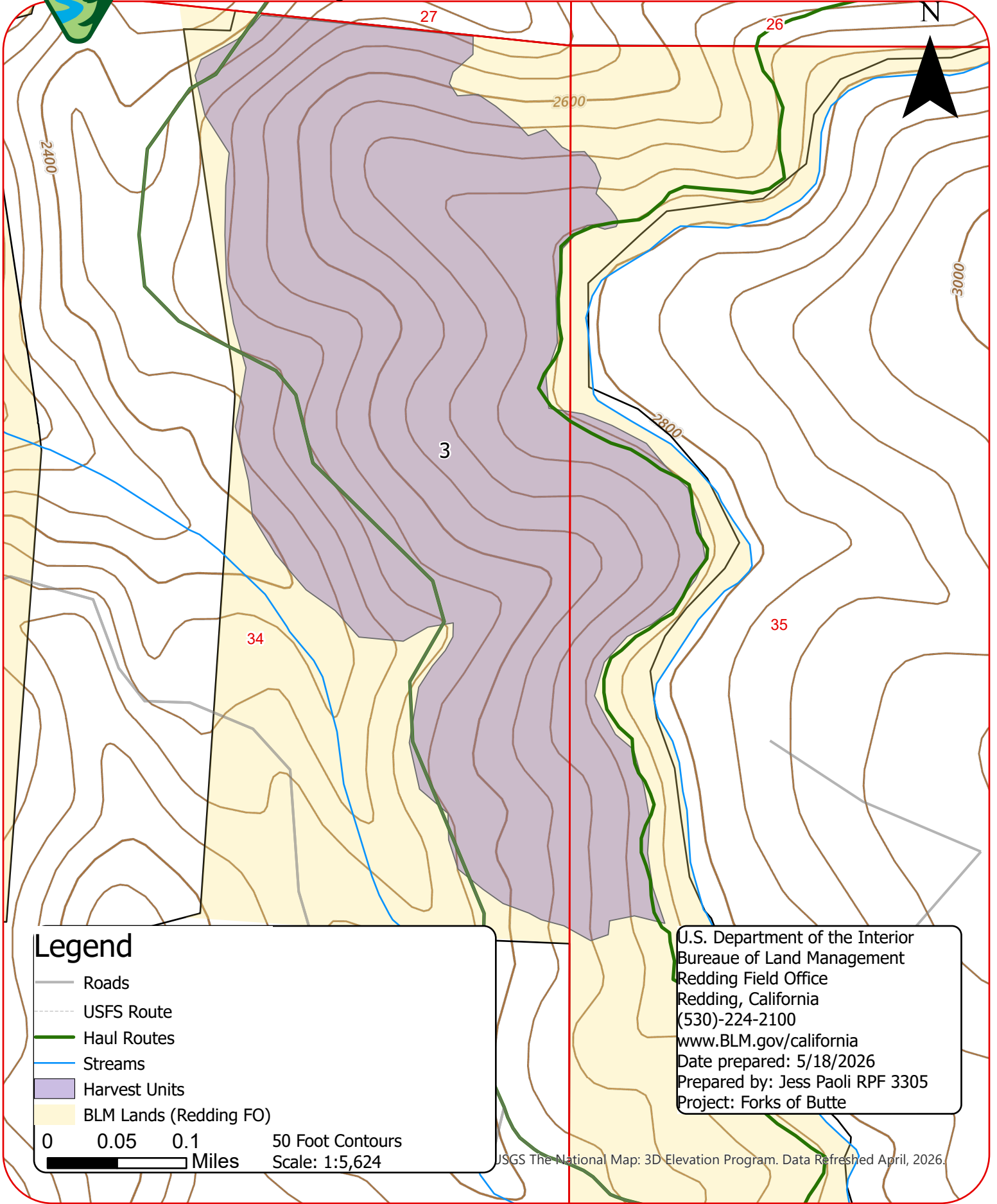
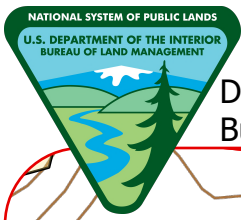


### Legend

- Roads
- USFS Route
- Haul Routes
- Streams
- Harvest Units
- BLM Lands (Redding FO)

0 0.125 0.25 50 Foot Contours  
 Miles Scale: 1:10,000

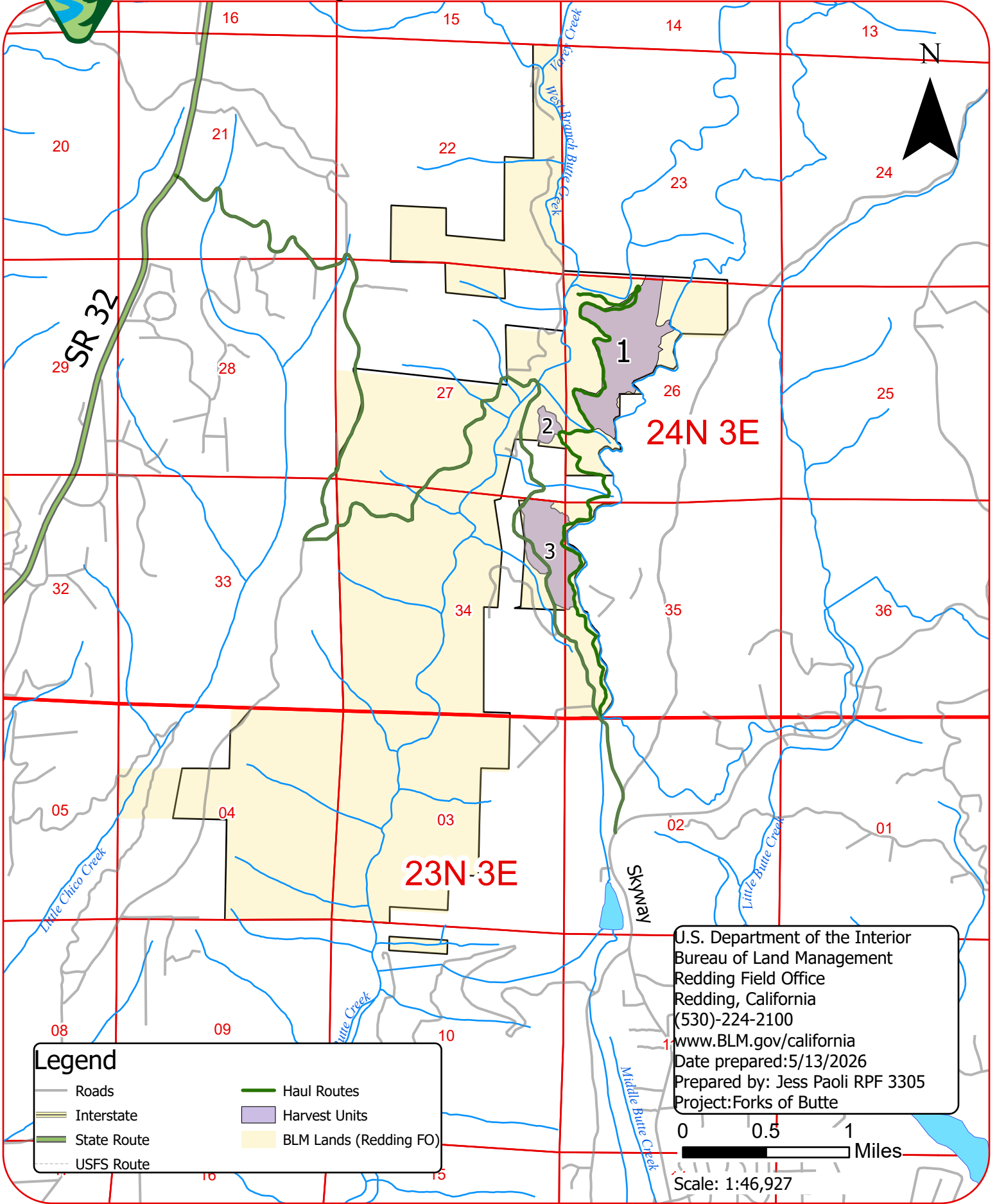
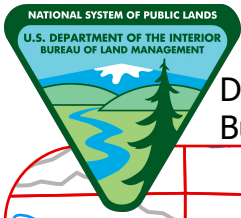
U.S. Department of the Interior  
 Bureau of Land Management  
 Redding Field Office  
 Redding, California  
 (530)-224-2100  
[www.BLM.gov/california](http://www.BLM.gov/california)  
 Date prepared: 5/18/2026  
 Prepared by: Jess Paoli RPF 3305  
 Project: Forks of Butte



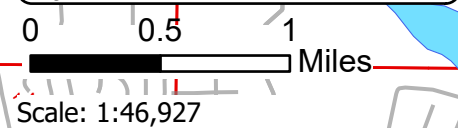
## Legend

- Roads
  - - - USFS Route
  - Haul Routes
  - Streams
  - Harvest Units
  - BLM Lands (Redding FO)
- 0 0.05 0.1 50 Foot Contours  
Miles Scale: 1:5,624

U.S. Department of the Interior  
Bureau of Land Management  
Redding Field Office  
Redding, California  
(530)-224-2100  
[www.BLM.gov/california](http://www.BLM.gov/california)  
Date prepared: 5/18/2026  
Prepared by: Jess Paoli RPF 3305  
Project: Forks of Butte



U.S. Department of the Interior  
Bureau of Land Management  
Redding Field Office  
Redding, California  
(530)-224-2100  
[www.BLM.gov/california](http://www.BLM.gov/california)  
Date prepared: 5/13/2026  
Prepared by: Jess Paoli RPF 3305  
Project: Forks of Butte



**Legend**

Roads	Haul Routes
Interstate	Harvest Units
State Route	BLM Lands (Redding FO)
USFS Route	