

Northern Nevada Correctional Center & Bureau of Land Management's Wild Horse & Burro Adoption



Saturday, June 27, 2026

Up to 17 Saddle-started Wild Horses and Two Wild Burro will be available for Adoption.



9:00-10:00am: Preview Wild Horses and Wild Burro

10:00am: Competitive-Bid Adoption Begins



**Event location: Northern Nevada Correctional Center Facility
1721 Snyder Avenue, Carson City, Nevada 89701**



About the Northern Nevada Correctional Center program

The gentling, saddle-training program in Carson City began in October 2000 as a cooperative effort between the Nevada Department of Corrections – Silver State Industries and the Nevada Department of Agriculture to train stray / feral horses removed from lands administered by the State of Nevada. BLM joined the partnership in 2004; through an agreement signed in 2007, and a renewed contract in 2018, the inmates now train only wild horses and burros removed from public lands administered by the Bureau of Land Management.

The Northern Nevada Correctional Center (NNCC) and Bureau of Land Management (BLM) hosts three public adoptions each year and all horses and burros are offered through a competitive-bid adoption process, conducted by an auctioneer. Approximately 45 - 60 wild horses (and burros) are trained and adopted each year through these public events. In addition, the NNCC also starts horses for other Federal and state agencies such as the U.S. Border Patrol, the National Park Service, Law Enforcement Mounted Units, Military Mounted Units and Nevada's Fish and Wildlife agencies.

Over 500 inmates have participated in the program, often coming with little or no experience working with horses. The inmates give each horse (or burro) approximately 120 days of training. The animals are essentially "green broke" and will need additional daily training and handling by an experienced rider when at their new home.

Find out more details on this exceptional program by going to the NNCC page located on the BLM website at <https://go.usa.gov/xEk8t> and stay up to date on the Bureau of Land Management's Nevada wild horse and burro program, including upcoming events or news, by following the BLM Nevada Facebook page at <https://www.facebook.com/BLMNevada>. In addition, a Facebook Group, called "NNCC Adopted Wild Horses & Burros" was established by and for past adopters to post updates of their adopted horses from the NNCC and use as a resource for questions and tips.



- Adoption Bids start at \$150.00 -

All trained animals will only be offered for adoption once during the event. Adopters must meet BLM adoption requirements to bid. Go to <https://go.usa.gov/xmcwS> for BLM requirements.

**Directions to the Northern Nevada Correctional Center
traveling from the south side of Carson City:**

**From US-395 (Carson Street),
Take Snyder Avenue (go left - NV State Route 518) east for 1.5 miles.
Turn south (right) at the NNCC sign and look for directional signs at
the far south end of the facility.**

Directions traveling south from Reno:

**Take 1-580 South to Carson Street and turn north (right).
Take Snyder Avenue (go right - NV State Route 518) east for 1.5 miles.
Turn south (right) at the NNCC sign and look for directional signs at
the far south end of the facility.**

NO TOBACCO OR CELL PHONES ARE PERMITTED ON THE GROUNDS DURING THE EVENT!

NO PHOTOGRAPHY WITHOUT MEDIA CREDENTIALS OR PRIOR APPROVAL



Adoption sponsored by:

**Nevada Department of Corrections – Silver State Industries and the
Bureau of Land Management, Wild Horse and Burro Program**

BLM LIVE AUCTION JUNE 27, 2026

	Horse ID	AGE	TRAINER	HORSE NAME	SEX	Signalment Key	CAP. LOC.	CAP. DATE	COLOR	HEIGHT	WEIGHT
1.	21910576	5	Julian Garcia	Bucky	G	HG1AAAAAL	Augusta Mountains (NV0311)	1/15/2024	Buckskin	15.2	1,000
2.	23908768	3	Levi Hooper	Goku	G	HG1AAAAAE	(NV0222) Calico Mountains	5/1/2023	Sorrel	15.0	1,000
3.	22911004	4	Vincent Uhmer	Clyde	G	HG1AAAAHG	Humboldt (NV0224)	12/31/2023	Gray	15.0	900
4.	23902041	3	Rob Radlein	Jaro	G	HG1AEEFL	Granite Range (NV0221)	10/2/2023	Buckskin	15.1	1,000
5.	20905044	6	Scott Stacey	Socks	G	HG1AFAAHE	Triple B (NV0417)	8/20/2022	Bay	15.1	1,100
6.	22905742	4	Leonard Glover	Bonnie	F	HF1AAAABK	Black Rock Range (NV0234)	9/19/2022	RoanBlue	15.2	1,000
7.	19903336	7	Gene Curtis	Dazzler	G	HG1AAAAFB	Cien Alipine (NV00310)	11/23/2023	Bay	14.2	1,050
8.	23902160	3	Vincent Uhmer	Ace	G	HG1AAAAAB	Black Rock Range (NV0234)	10/16/2023	Bay	15.1	1,050
9.	21898013	5	Gene Curtis	Honey Badger	G	HG1ADADAB	Coyote Lake/Alvord-Tule Springs (OR0014)	10/23/2021	Bay	16.0	1,150
10.	21897295	5	Scott Stacey	Brave	G	HG1CAEAHD	(NV0235) Shawave Mountains II	3/1/2021	Brown	15.3	1,000
11.	22910813	4	Brian Ojeda	Happy	G	HG1AAAAAB	North Stillwater (NV0229)	1/1/2024	Bay	15.0	950
12.	21903073	5	Eric Ross	Houdini	G	HG1AADAAB	Cien Alipine (NV00310)	11/9/2023	Bay	15.0	1,000
13.	23902066	3	Gene Curtis	Looking Glass	G	HG1AAFAHC	Black Rock Range (NV0234)	10/11/2023	Black	15.0	950
14.	21908354	5	Vincent Uhmer	Tsunami	G	HG1AAAAAB	Spruce-Pequeop (NV0109)	7/30/2023	Bay	15.0	950
15.	21907348	5	Eric Ross	Troubadour	G	HG1AAABAB	Spruce-Pequeop (NV0109)	8/1/2023	Bay	14.3	900
16.	19906199	7	Leonard Glover	Curly	G	HG1AAAAAC	Black Rock Range (NV0234)	9/16/2022	Black	14.3	850
17.	21771840	5	Levi Hooper	Buck-40	G	HG1AAAAAB	Roberts Mountain (NV0607)	10/28/2023	Bay	15.0	900
18.	23904581	3	Timothy Laney	Cletus	G	BG1AAAAAD	South Shoshone (NV0601)	12/4/2024	Brown	13.0	500
19.	23904613	3	Chris Kiblin	Shaggy	G	BG1AAAAAD	Buffalo Hills (NV0220)	11/15/2024	Brown	13.0	500

Bucky #0576



Freezemark #21910576

Age: 5

Sex: Gelding

Height: 15.2 hands

Weight: 1,100 pounds

HMA: Augusta Mtn
(NV0311)

Trainer: Julian Garcia

Bucky is a stout buckskin that is very gentle and likes to move cattle. You can drag a dummy with him, and he listens to all cues. Bucky loves attention and he has practiced trailer loading as well as picking up all four feet. He would be a really good ranch horse.

Goku #8768



Freezemark #23908768

Age: 3

Sex: Gelding

Height: 15.0 hands

Weight: 1,000 pounds

HMA: Calico Mtn
(NV0222)

Trainer: Levi Hooper

Goku is just a baby and is the sweetest and most gentle horse that I have ever had the pleasure of working with. He sides pass and has great head flexion. He surprises me every day with how good he is.

Clyde #1004



Freezemark #22911004

Age 4

Sex: Gelding

Height: 15.0 hands

Weight: 900 pounds

HA: Humboldt
(NV0224)

Trainer: Vincent Uhlmer

Clyde is a very responsive horse and has good head collection when backing up. He has a very nice side pass and can pick up all four feet. He has practiced trailer loading and has pushed cows. Clyde is very energetic and is always will to work. He is easy to saddle and will make a good addition to your home or ranch

Jaro #2041



Freezemark #23902041

Age 3

Sex: Gelding

Height: 15.1 hands

Weight: 1,000 pounds

HMA: Grant Range
(NV0221)

Trainer: Rob Radlein

Jaro is a handsome colt with a hairstyle that will make you very jealous. Jaro has been the quickest learning horse that I have worked with thus far. He understands walking, trotting, and he has the smoothest lope of any horse that I have ever ridden. He has helped push cows and crossed the Carson River. I have roped off him, and has a great temperament.

Socks #5044



Freezemark #20905044

Age: 6

Sex: Gelding

Height: 15.1 hands

Weight: 1,100 pounds

HMA: Triple B
(NV0417)

Trainer: Scott Stacey

Socks is a gentle bay. He is nice and mellow and would be a good trail horse. He has very good speed control and turning abilities. Socks is very loveable and enjoy being groomed.

Bonnie #5742



Freezemark #22905742

Age 4

Sex: Mare

Height: 15.2 hands

Weight: 1,000 pounds

HMA: Black Rock
Range
(NV0234)

Trainer: Leonard Glover

Bonnie is a beautiful roan with a stout body and intelligent mind. She can move her shoulders and hips independently as well as has great flexion of neck and body. Bonnie responds greatly to leg and foot cues. She has great gate manners, can side pass, and backs up with a collected neck. She can perform all gaits smoothly; I have thrown the rope off her and dragged the dummy sled. She has herded cows and been through the Carson River. The snaffle bit has been used on her throughout her training process. Bonnie is a great all-around horse.

Dazzler #0336



Freezemark #1990336

Age 7

Sex: Gelding

Height: 14.2 hands

Weight: 1,050 pounds

HMA: Clan Alpine
(NV0310)

Trainer: Gene Curtis

Dazzler is an awesome horse. I have pushed and worked cows on him, and branded/doctored calves as well. He pulls and tracks the roping dummy and is built for any type of work. He loves sorting cows, he lopes and trots circles very well. Take Dazzler home as he is ready to work.

Ace #2160



Freezemark #23902160

Age 3

Sex: Gelding

Height: 15.1 hands

Weight: 1,050 pounds

HMA: Black Rock Range
(NV0234)

Trainer: Vinent Uhlmer

Ace is a super gentle horse that will sleep with his head in your lap. He can be ridden bare back, side pass, has good shoulder movement, and a smooth lope. He will cross Carson River, and willows. Ace picks up all four feet, has practiced trailer loading, and you can throw a rope off him. He is my favorite horse thus far and I am sure you will feel the same.

Honey Badger #8013



Freezemark #21898013

Age 5

Sex: Gelding

Height: 16.0 hands

Weight: 1,050 pounds

HMA: Coyote

Lake/Alvord-Tule Spring
(OR0014)

Trainer: Gene Curtis

Honey Badger is a huge horse that is ready to do any type of work that you will need him for. He lopes and trots circles really good for a horse of his size. He is great with his feet, gathers and works cows, and is ready to be a great ranch horse.

Brave #7295



Freezemark #21897295

Age 5

Sex: Gelding

Height: 15.3 hands

Weight: 1,000 pounds

HMA: Shawave Mtn II
(NV0235)

Trainer: Scott Stacy

Brave has been a great horse to work with. He is a smooth ride and is good with leg pressure and turns very well. Brave has a very good stop and backs up easily. Brave is a friendly horse and deserves a good home.

Happy #0813



Freezemark #22910813

Age 4

Sex: Gelding

Height: 15.0 hands

Weight: 950 pounds

HMA: North

StillWater

(NV0229)

Trainer: Brian Ojeda

Happy is a very handsome horse and loves to be petted. He is a well-rounded horse and is easy to catch, saddle, and waits to be mounted. Happy picks up all four feet with ease, has practiced trailer loading, and can open/close gates. He can drag and heel a roping sled and has been around cattle. Happy has been an absolute pleasure to work with.

Houdini #3073



Freezemark #21903073

Age 5

Sex: Gelding

Height: 15.0 hands

Weight: 1,000 pounds

HMA: Clan Alpine

(NV0310)

Trainer: Eric Ross

Houdini is a gentle horse that loves to have his ears rubbed. He can lift all four feet for hoof care. Houdini would make a great ranch horse.

Looking Glass #2066



Freezemark #23902066
Age 3
Sex: Gelding
Height: 15.0 hands
Weight: 950 pounds
HMA: Black Rock Range
(NV0234)
Trainer: Gene Curtis

Looking Glass is a young and gentle horse with lots of potential as he still has room to grow physically. He pushed and worked cows, and I roped calves on him. He pulls the roping dummy and tracks the roping dummy great. He is good with his turns as well as stopping and trotting. He also lopes circles and figure 8's perfectly. Looking Glass has a great mind and will be an awesome addition to a good home.

Tsunami #8354



Freezemark #21908354
Age 5
Sex: Gelding
Height: 15.0 hands
Weight: 950 pounds
HMA: Spruce-Pequop
(NV0109)
Trainer: Vincent Uhlmer

Tsunami loves attention and is very responsive to cues. He has good shoulders, a nice side pass, and has practiced trailer loading. I can rope off him and is easy to bridle and pick up all four feet. He will make a good partner so do not miss this opportunity to take him home.

Troubadour #7348



Freezemark #21907348

Age 5

Sex: Gelding

Height: 14.3 hands

Weight: 900 pounds

HMA: Spruce-Pequop
(NV0109)

Trainer: Eric Ross

Troubadour is a very calm horse that is a joy to ride. You can throw a rope off him. He is gentle and would make an excellent ranch or trail horse.

Curly #6199



Freezemark #19906199

Age 7

Sex: Gelding

Height: 14.3 hands

Weight: 850 pounds

HMA: Black Rock
Range
(NV0234)

Trainer: Leonard Glover

Curly is a compact horse with a wavy coat of hair. You can pick up all four feet with ease. He has good gate manners and listens to all leg and foot cues. I threw a rope off him and dragged the dummy sled as well. He has worked cows in the open pastures, walks through rivers, and he can perform all gaits smoothly. Curly has been trained in a snaffle bit and loves to be out on the open range. He has been a joy to train.

Buck-40 #1840



Freezemark #21771840

Age 5

Sex: Gelding

Height: 15.0 hands

Weight: 900 pounds

HMA: Roberts Mtn
(NV0607)

Trainer: Levi Hooper

Buck-40 has been an absolute pleasure to work with. He responds quickly to all his cues, has a very supple neck, and performs all his maneuvers with ease. Including shoulders, side passing, and tracking and pulling the rope dummy. I pushed cows on him and we crossed the river. He is a very sweet horse and will be missed dearly.

Cletus #4581



Freezemark #23904581

Age 3

Sex: John

Height: 13.0 hands

Weight: 500 pounds

HMA: South

Shoshone

(NV0601)

Trainer: Timothy Laney

Cletus is a good burro and would be great for work or carrying a pack. He leads good and has practice trailer loading. He is very gentle and will give you all for feet. Once you get to know him his personality sure comes out, so please give him a good home.

Shaggy #4613



Freezemark #23904613

Age 3

Sex: John

Height: 13.0 hands

Weight: 500 pounds

HMA: Buffalo Hills
(NV0220)

Trainer: Chris Kiblin

Shaggy loves attention and likes to be petted and love on. Once I gained his trust his personality really came out. He is very comfortable around people and other horses. He enjoys going for walks and can be a little shy at first but once he gets to know you , he will do anything that you ask of him. Shaggy leads and practiced trailer loading and will be a great addition to your family.

Bureau of Land Management Herd Management Areas

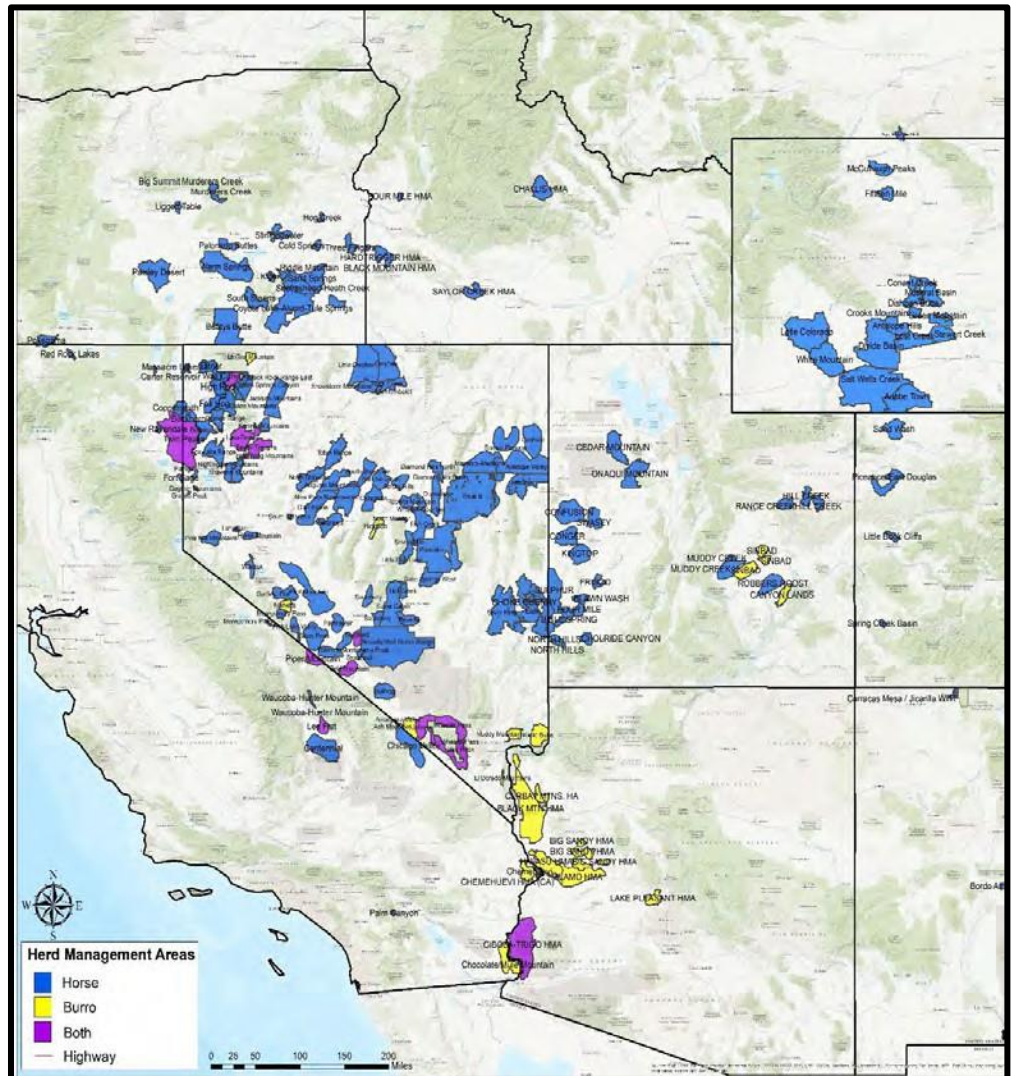
The BLM manages wild horses and burros in 177 herd management areas (HMA) on nearly 26.9 million acres of public land across 10 western states. Each HMA is unique in its terrain features, local climate, and natural resources, just as each herd is unique in its history, genetic heritage, coloring, and size distribution.

Wild horses and burros are managed as *part* of the BLM's multiple-use mission, with the goal of supporting healthy wild horses and burros on healthy public rangelands. To protect the health of the land and to support healthy horses and burros, the BLM works to achieve in HMAs what is known as the Appropriate Management Level (AML). AML is the point at which wild horse and burro populations are consistent with the land's capacity to support them and other mandated uses of those

lands, including protecting ecological processes and habitat for wildlife and livestock. The AML for each HMA ranges from a minimum population level to a maximum population level in order to allow for population growth over a four- to five-year period. The BLM establishes AML through the evaluation and analysis of rangeland resource and population data spanning several years, including data relating to vegetation and soil types, weather, and water. The AML for each HMA is set in an open, public process through field office planning efforts.

How wild horses and burros are managed differs from how most other species are managed on public lands. Wildlife species, such as deer, are usually controlled through a combination of hunting and natural predators. Livestock use on public lands is intricately managed and controlled through grazing permits. Because wild horses and burros are protected from hunting, and because of a lack of natural predators, if left unmanaged herds can double in size in just four to five years and quickly outgrow the ability of the land to support them. Maintaining herd size at the appropriate management level is the best way to ensure healthy horses and burros on healthy rangelands.

The current nationwide, maximum population level on the range is 26,785 animals. For more information about all the BLM's HMAs, visit the BLM website's herd management areas section at <https://go.usa.gov/xm3p9>.



Frequently Asked Questions (FAQs)

What is prohibited on the grounds and are cameras allowed?

- No tobacco products or cell phones are permitted on the grounds during the event.
- No photography is permitted without Media Credentials or prior approval is granted.

How much training do the animals actually have?

- The animals are “green-broke” which means they have received up to 120+ days of training by the inmates. They will continue to need daily training to reinforce the basics they have learned. Most saddle-started horses will initially need an experienced rider.

Can we preview the animal available for adoption before the adoption date?

- No, since this is a prison facility, the animals cannot be viewed until the morning of the adoption.

What is the average sale price of saddle-started horses trained by prison inmates?

- Prices vary widely. The bids have gone as high as \$15,000. However, the average price is between \$1,500 to \$3,500 per animal. It really depends on how many people are interested in one particular animal.

Do I have to be present to adopt a wild horse or burro? Can I send my friend?

- You must be present to adopt a wild horse or burro. You cannot send a family member or a friend. The person signing the “Private Maintenance and Care Agreement” will be the legal adopter and the only person that can apply for title after a year of proper care.

What are the facility requirements?

- The minimum size corral is 20' x 20' which is also the recommended size until the adopted animal becomes easy to catch. Even though the horses are green broke, they may still startle easily and attempt to jump over the corral; therefore, a minimum corral height of 5' made from heavy duty construction materials using poles, pipes, or planks with at least 1 ½ inch thickness, and without dangerous protrusions, is required. Barbed wire, large-mesh-woven, stranded, and electric materials are unacceptable for fencing.
- Some form of shelter must be available, within the corral area, to mitigate the effects of inclement weather and temperature extremes; examples of acceptable shelter may be of natural cover (tree, etc.) or man-made structure.

Do I have to pick up the animal I adopt the day of the adoption?

- The BLM prefers that you take the horse or burro home the day of the adoption, but special arrangements can be made with the prison to pick up the animal in a couple of days.

What are the BLM's trailer requirements for hauling my animal home?

- The BLM recommends stock type trailers; three-horse slant load trailers are acceptable. Other types of trailers will be evaluated on a case-by-case basis. BLM requires trailers meet the following minimum requirements:
 - a. Covered top, sturdy walls and floors, and a smooth interior, free from any sharp protrusions.
 - b. Ample headroom, adequate ventilation and floors covered with a non-skid material.
 - c. Removable partitions or compartments to separate animals by size and sex, if necessary.
 - d. Two-horse straight load or ones that have been modified are not approved trailers for this adoption event
- BLM personnel will inspect the safety of each trailer and reserve the right to refuse loading if the trailer is unacceptable. Two-horse slant load trailers must be pre-approved before the adoption.

Adoption Application, Requirements and Payment Information

To download a BLM adoption application for a wild horse or burro (Form 4710-10), please go to <https://go.usa.gov/xEkhV>.

Adoption Requirements at a Glance

- Must be 18 years old. Parents or guardians may adopt and allow a younger family member to care for the animal.
- Have no prior conviction for inhumane treatment of animals or for violating the Wild Free-Roaming Horse and Burro Act.
- Have adequate feed, water, and facilities (at least 400 square feet for each animal) to provide humane care for the number of animals requested.
- Provide a home for the animal in the United States until you receive Certificate of Title from the BLM.

What types of payments are accepted?

- The BLM would prefer payments made on Credit Cards such as VISA, MasterCard, American Express and Discover.
- The BLM also accepts personal checks, money orders, travelers' checks, and cash as payment for adoption fees.

Can I get a refund or exchange my adopted horse for another in the future?

- In spite of efforts to provide adopters with healthy animals, situations arise where unrecognized lameness or health problems surface following adoption. Upon request, an adopter may receive a credit for the amount of the original adoption toward the adoption fee for a replacement animal if the following conditions apply:
 - a. Within six months of the original adoption, the adopter provides a signed statement from a veterinarian that the animal died, had to be euthanized, or was diagnosed with an incurable illness or lameness attributable to a condition that already existed at the time of adoption.
 - b. The death, development of the illness, or lameness of the animal must not have been preventable by proper care from the adopter.
 - c. The request for replacement, with the substantiating veterinarian's statement, must be received by the BLM no later than 30 days after the animal's death or diagnosis.
 - d. Adopters shall return live animals to the BLM; should the animal have been euthanized or succumbed; the adopter is responsible for the disposal of the carcass.
- BLM will issue the original adopter an adoption fee voucher with the following stipulations:
 - a. The voucher will be the same amount paid at the time of the original adoption.
 - b. Valid for 1-year from the date issued.
 - c. Redeemable toward the fee to adopt another animal at an upcoming satellite adoption event, Internet adoption, or during a regularly scheduled Northern Nevada Correctional Center adoption.
 - d. The voucher cannot be used at an event sponsored by the Mustang Heritage Foundation (MHF).
 - e. The voucher is only good for one animal.
 - f. If the fee for the replacement animal is more than the original adoption fee, the adopter will be required to pay the balance. If the fee for the replacement animal is less than the original adoption voucher amount, the remaining balance will be forfeited.
 - g. No other refunds or exchanges will be approved.