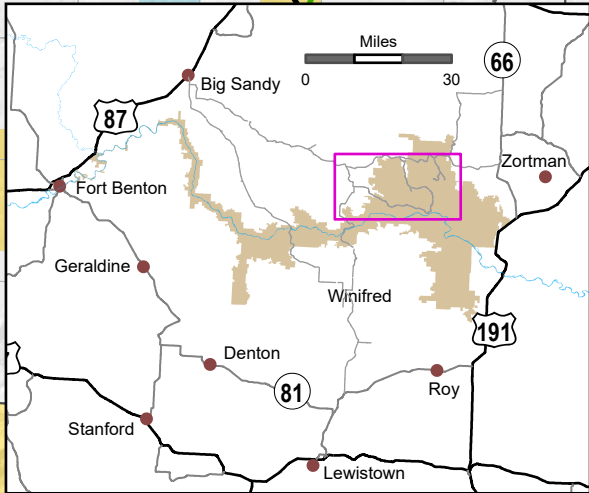
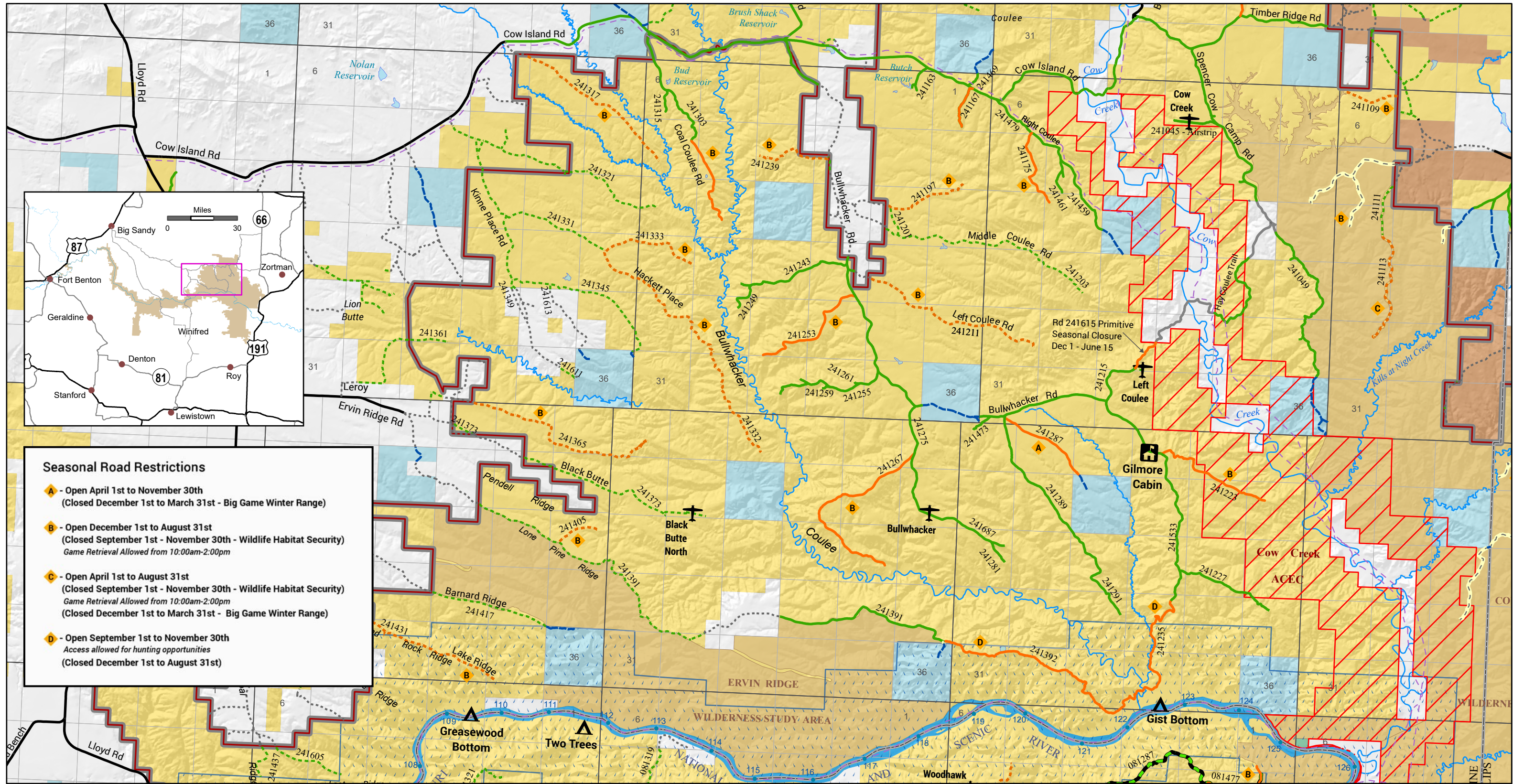


Bullwhacker Area Map



Seasonal Road Restrictions

- A** - Open April 1st to November 30th
(Closed December 1st to March 31st - Big Game Winter Range)
- B** - Open December 1st to August 31st
(Closed September 1st - November 30th - Wildlife Habitat Security)
Game Retrieval Allowed from 10:00am-2:00pm
- C** - Open April 1st to August 31st
(Closed September 1st - November 30th - Wildlife Habitat Security)
Game Retrieval Allowed from 10:00am-2:00pm
(Closed December 1st to March 31st - Big Game Winter Range)
- D** - Open September 1st to November 30th
Access allowed for hunting opportunities
(Closed December 1st to August 31st)

BLM Open Road	BLM Open Road (Private Land Access Permission Required)	MT State DNRC Road (check permissions)	BLM	National Historic Trail	Upper Missouri River Breaks National Monument Boundary
Limited Seasonal BLM Road	Limited Seasonal BLM Road (Private Land Access Permission Required)	State and County Roads (public access)	BIA	Wild and Scenic Rivers	Area of Critical Environmental Concern (ACEC)
BLM Primitive Routes	Private Road (Private Land Access Permission Required)	Local Road (natural surface / dirt) (public access)	State Lands	Wilderness Study Area (WSA)	
		Private	Wilderness Study Area (WSA)		

No warranty is made by the Bureau of Land Management as to the accuracy, reliability, or completeness of this map or the data displayed for individual use or aggregate use with other data. May 2026.

