

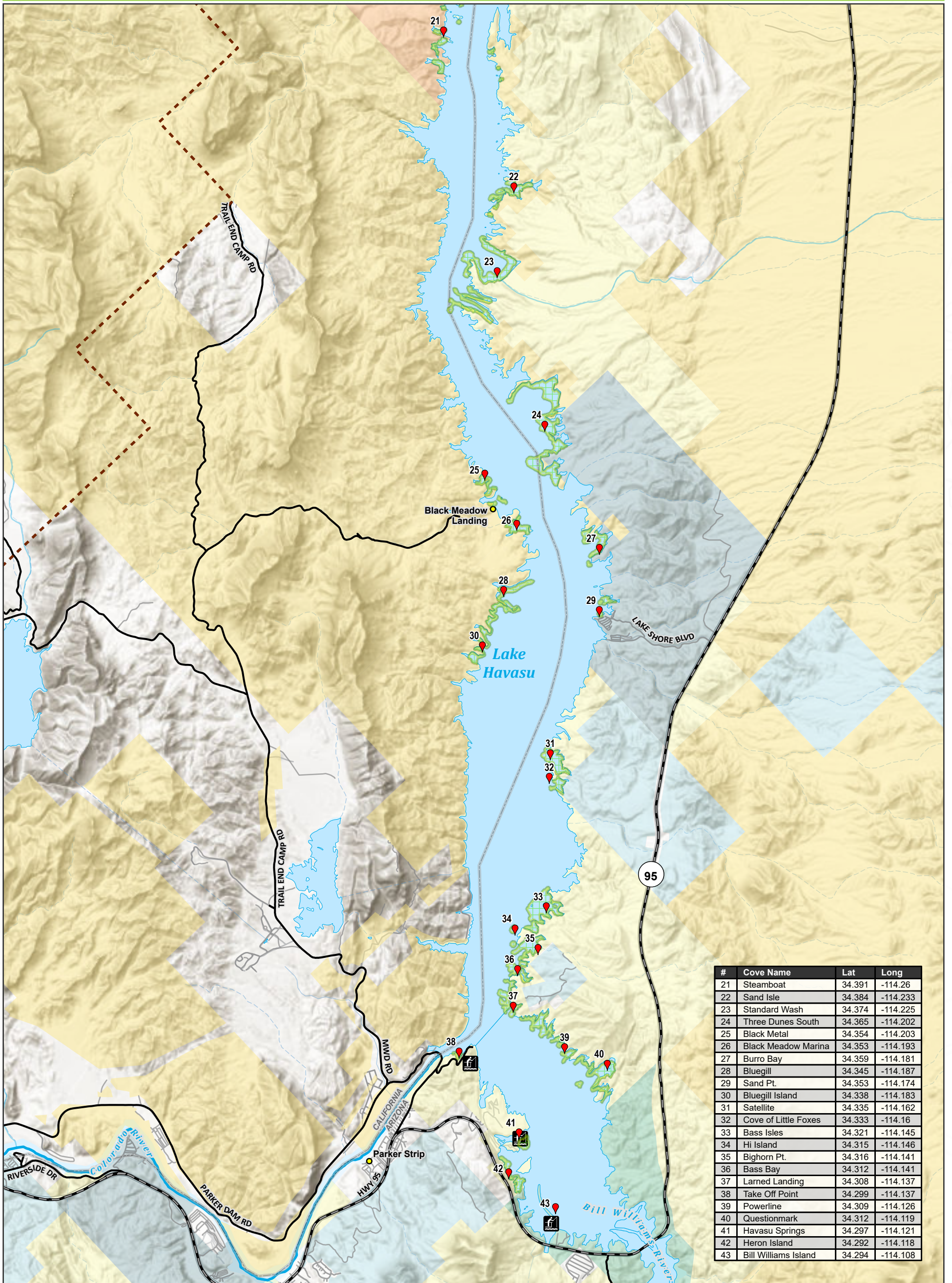


South Fish Habitat Coves - Lake Havasu

Bureau of Land Management - Lake Havasu Field Office



South Map
AZ-REC3011-02-01
This map is geo-referenced



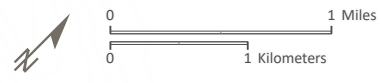
#	Cove Name	Lat	Long
21	Steamboat	34.391	-114.26
22	Sand Isle	34.384	-114.233
23	Standard Wash	34.374	-114.225
24	Three Dunes South	34.365	-114.202
25	Black Metal	34.354	-114.203
26	Black Meadow Marina	34.353	-114.193
27	Burro Bay	34.359	-114.181
28	Bluegill	34.345	-114.187
29	Sand Pt.	34.353	-114.174
30	Bluegill Island	34.338	-114.183
31	Satellite	34.335	-114.162
32	Cove of Little Foxes	34.333	-114.16
33	Bass Isles	34.321	-114.145
34	Hi Island	34.315	-114.146
35	Bighorn Pt.	34.316	-114.141
36	Bass Bay	34.312	-114.141
37	Larned Landing	34.308	-114.137
38	Take Off Point	34.299	-114.137
39	Powerline	34.309	-114.126
40	Questionmark	34.312	-114.119
41	Havasu Springs	34.297	-114.121
42	Heron Island	34.292	-114.118
43	Bill Williams Island	34.294	-114.108

Lake Havasu
 Coves
 Fishing Pier (Lake Havasu)
 Artificial Habitat

Administrative Unit
 Town or Place of Interest
 Field Office Boundary
 State Boundary

Transportation
 State Highway
 County or Major Routes
 Minor Routes

Surface Management Agency
 Bureau of Land Management
 Bureau of Reclamation
 Local or State Parks
 Private
 State
 US Fish and Wildlife Service
 Indian Lands



Map Produced by BLM Colorado River District Office
 Coordinate System: NAD 1983 UTM Zone 12N
 Scale: 1:55,000
 11x17 page output
 Date: 6/7/2024

No warranty is made by the Bureau of Land Management as to the accuracy, reliability, or completeness of these data for individual use or aggregate use with other data.

