

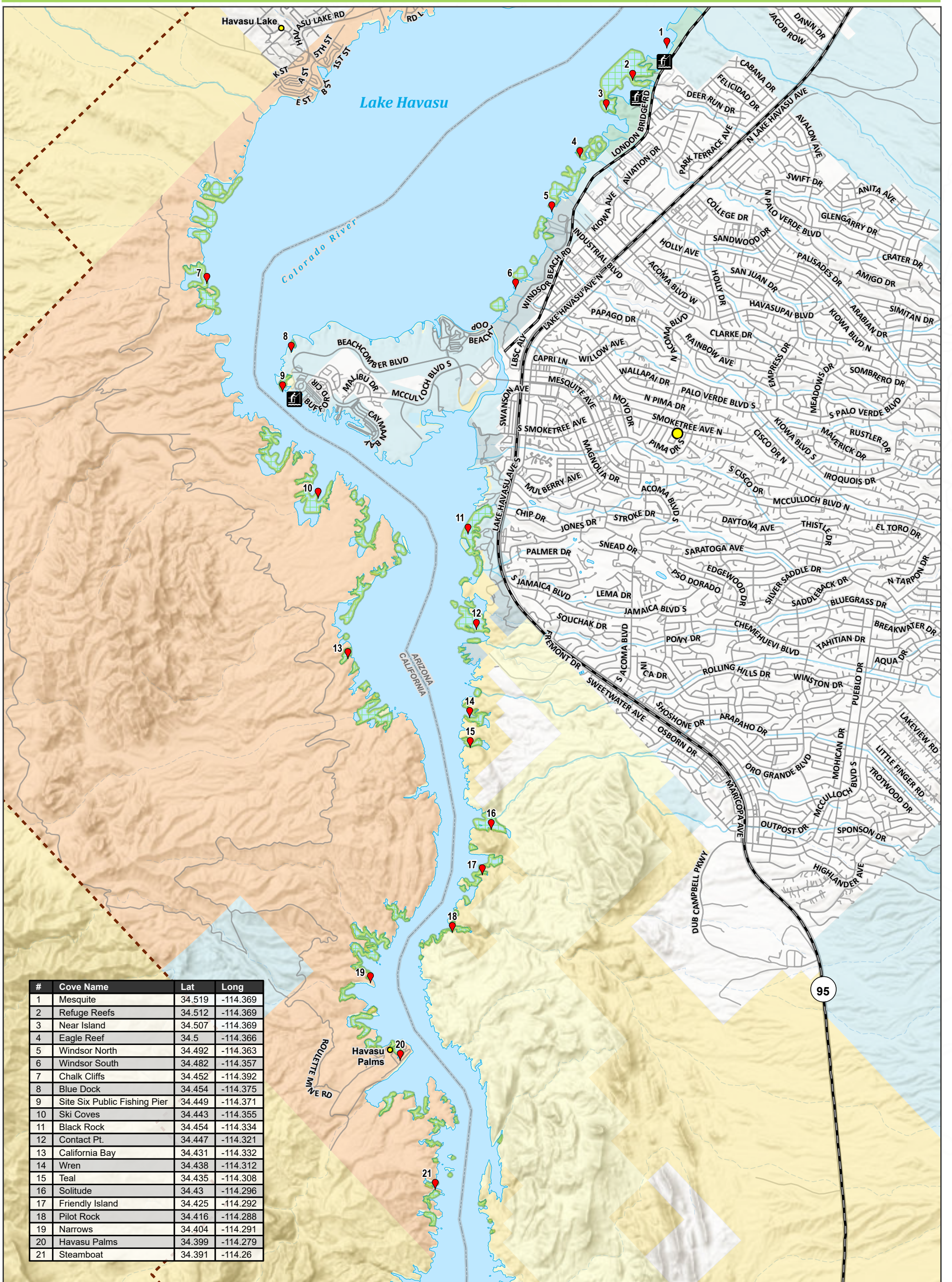


North Fish Habitat Coves - Lake Havasu

Bureau of Land Management - Lake Havasu Field Office



North Map
AZ-REC3011-01-01
This map is geo-referenced



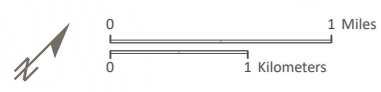
#	Cove Name	Lat	Long
1	Mesquite	34.519	-114.369
2	Refuge Reefs	34.512	-114.369
3	Near Island	34.507	-114.369
4	Eagle Reef	34.5	-114.366
5	Windsor North	34.492	-114.363
6	Windsor South	34.482	-114.357
7	Chalk Cliffs	34.452	-114.392
8	Blue Dock	34.454	-114.375
9	Site Six Public Fishing Pier	34.449	-114.371
10	Ski Coves	34.443	-114.355
11	Black Rock	34.454	-114.334
12	Contact Pt.	34.447	-114.321
13	California Bay	34.431	-114.332
14	Wren	34.438	-114.312
15	Teal	34.435	-114.308
16	Solitude	34.43	-114.296
17	Friendly Island	34.425	-114.292
18	Pilot Rock	34.416	-114.288
19	Narrows	34.404	-114.291
20	Havasu Palms	34.399	-114.279
21	Steamboat	34.391	-114.26

Lake Havasu
 Coves
 Fishing Pier (Lake Havasu)
 Artificial Habitat

Administrative
 City
 Town or Place of Interest
 Field Office Boundary
 State Boundary

Transportation
 State Highway
 Minor Routes

Surface Management Agency
 Bureau of Land Management
 Bureau of Reclamation
 Local or State Parks
 Private
 State
 US Fish and Wildlife Service
 Indian Lands



Map Produced by BLM Colorado River District Office
 Coordinate System: NAD 1983 UTM Zone 12N
 Scale: 1:55,000
 11x17 page output
 Date: 6/7/2024

No warranty is made by the Bureau of Land Management as to the accuracy, reliability, or completeness of these data for individual use or aggregate use with other data.

