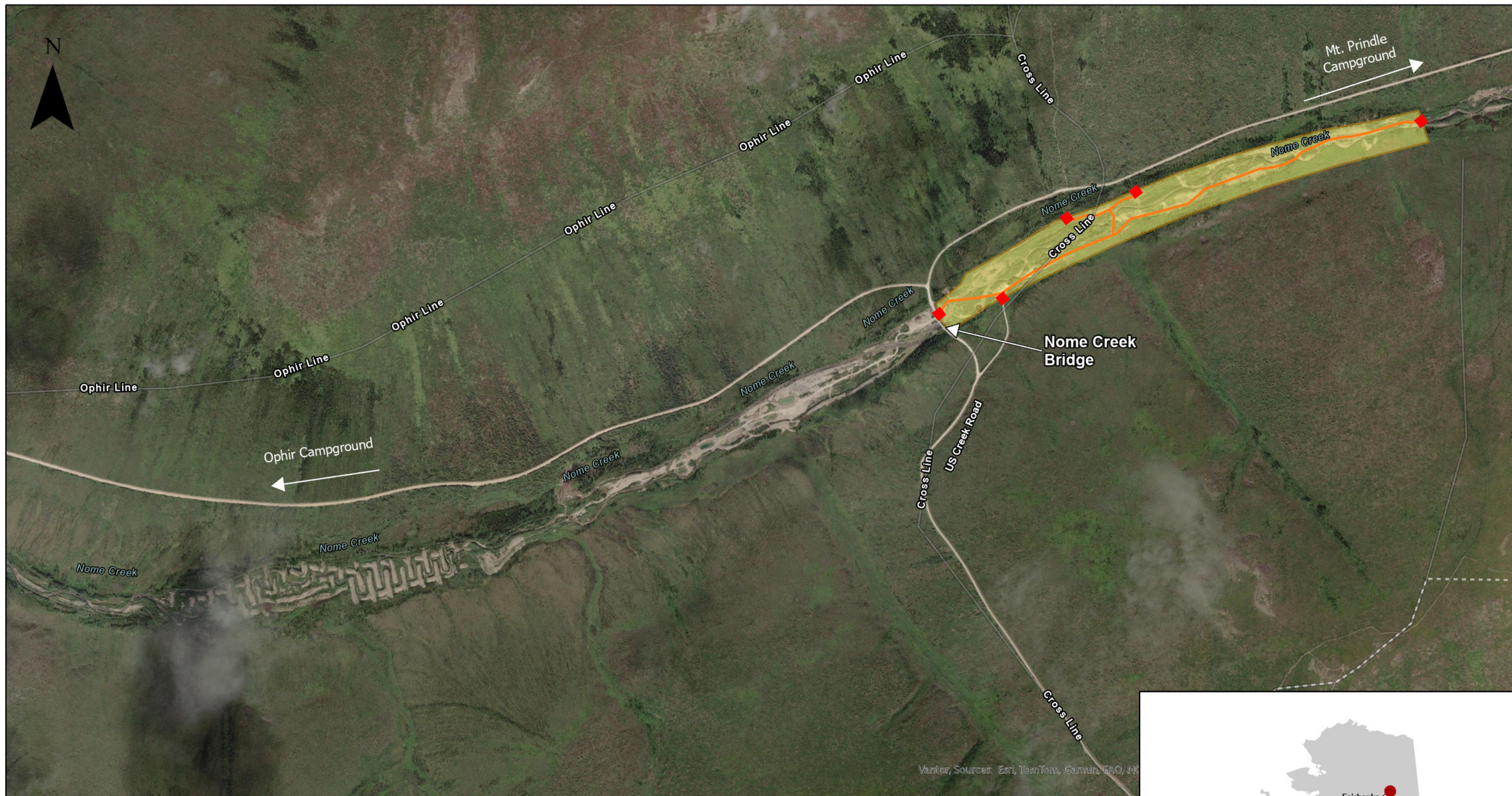




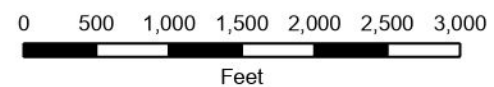
Nome Creek Temporary Trail Closure and Project Area July 6 - August 31, 2026

U.S. DEPARTMENT OF THE INTERIOR | BUREAU OF LAND MANAGEMENT | ALASKA | WHITE MOUNTAINS NATIONAL RECREATION AREA

5/29/2026



- ◆ Trail Closure Sign Locations
- Closed Trail Section
- Construction Area



Disclaimer: No warranty is made by the Bureau of Land Management as to the accuracy, reliability, or completeness of these data for individual or aggregate use with other data. Original data were compiled from various sources. This information may not meet National Map Accuracy Standards. This product was developed through digital means and may be updated without notification. The information displayed on this map should be used for graphic display only. For official land status information, refer to Cadastral Survey plats, Master Title Plats, and land status case-files.

