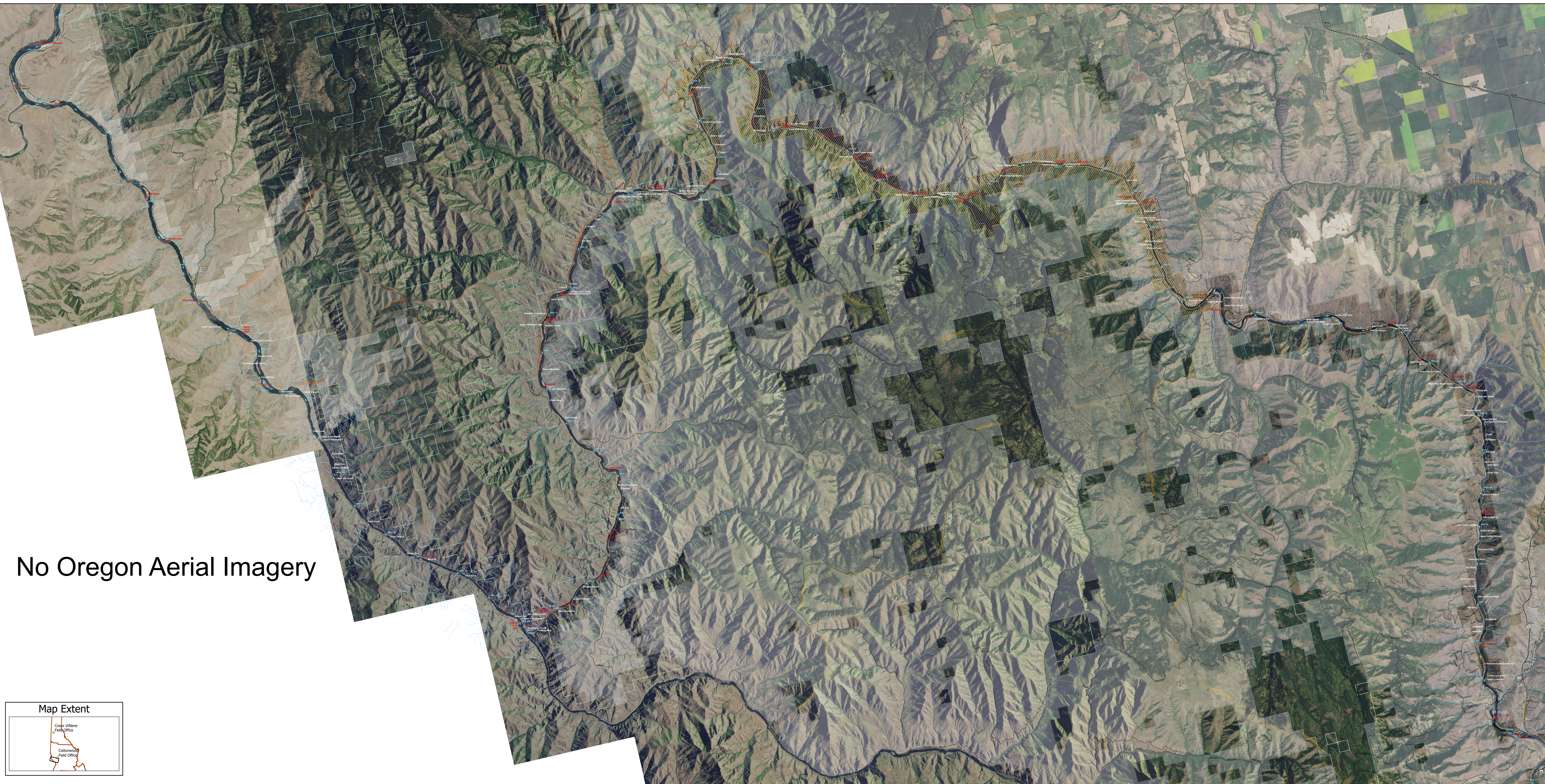
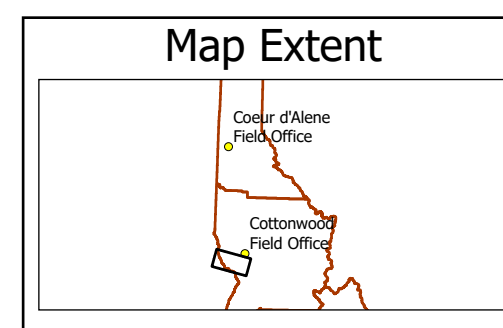


# Hammer to Heller - Lower Salmon River

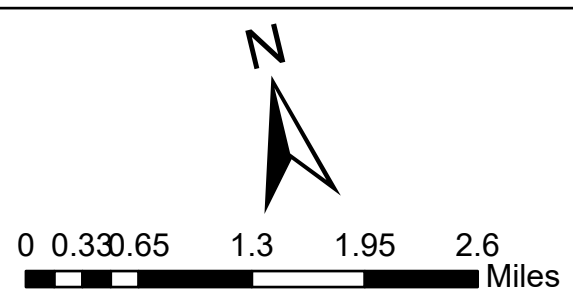


No Oregon Aerial Imagery



U.S. Department of the Interior  
Bureau of Land Management, Idaho  
Cottonwood Field Office

No warranty is made by the Bureau of Land Management. The accuracy, reliability, or completeness of these data for individual use or aggregate use with other data is not guaranteed. This map cannot be made fully 508 compliant. For help with its data or information, please contact the BLM Idaho Cottonwood Field Office at 208-962-3245.



## Legend

- |     |         |           |                       |     |                   |                        |
|-----|---------|-----------|-----------------------|-----|-------------------|------------------------|
| BLM | OTHER   | STATE F&G | Wilderness Study Area | II  | Boat Launch       | Major Roads            |
| IR  | PRIVATE | STATE P&R | River Mileage         | III | Lewis Clark Trail | Transportation Network |
| NPS | STATE   | USFS      | Beach                 | IV  | Nez Perce Trail   | Streams                |

Map date: April 17, 2026