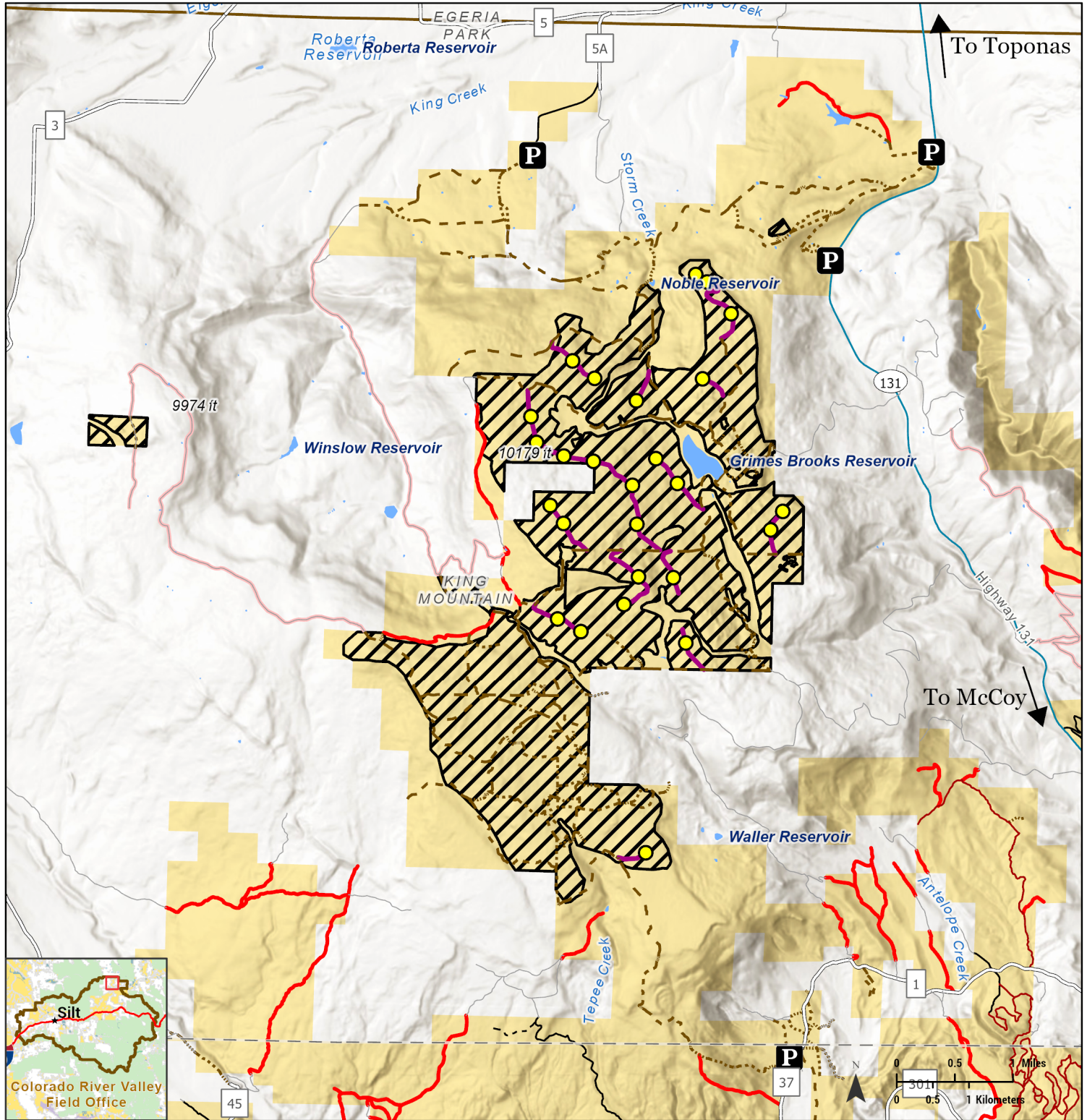




Alternative A: King Mountain Forest Health and Hazard Fuel Reduction Project

King Mountain EA Proposal (5,500ac) | DOI-BLM-CO-G020-2026-0004-EA

Bureau of Land Management
 Colorado River Valley Field Office
 2300 River Frontage Road
 Silt, Colorado 81652
 (970) 876-9000



Treatments & Associated Features

- Alt A Proposed Project Area on BLM (5,500ac)
 - Potential Landings
 - Potential Temp Roads
- Other Features of Interest**
- Lake/Pond
 - Trailhead Parking

Non-BLM Routes

- County Roads
 - State Highway
 - Private/Unknown Roads
- BLM Motorized Routes**
- All Modes of Transportation
 - Motorcycle Shared

BLM Non-motorized Routes

- Shared Hiking, Bicycle, Equestrian
 - Equestrian and Hiking only
- Administrative Routes**
- Admin Only
 - Authorized/Permitted User Only
- Administrative Boundary**
- Colorado River Valley Field Office

Surface Management

- Bureau of Land Management
- Bureau of Reclamation
- State, County, City, Areas
- National Park Service

Other Federal

- Private
- State
- US Forest Service
- US Fish and Wildlife Service

1/28/2026 No warranty is made by the Bureau of Land Management as to the accuracy, reliability, or completeness of this map or the data displayed for individual use or aggregate use with other data.