



U.S. Department of the Interior  
Bureau of Land Management

# Challis Field Office

## Recreation Fee Sites Business Plan

March 2026



**Prepared by:**

**Department of the Interior  
Bureau of Land Management, Idaho  
Idaho Falls District  
Challis Field Office**

### **Mission statement**

The Bureau of Land Management sustains the health, diversity, and productivity of the public lands for the use and enjoyment of present and future generations.

### **Cover Photo**

Campsite at Joe T. Fallin Recreation Site by James Shoemaker, BLM Campground Host

LVRDID090000 -- Mackay Reservoir and Joe T. Fallini Recreation Site

LVRDID410000 – Bayhorse, Cottonwood and East Fork Recreation Sites

### **For more information**

To request a copy of this publication please contact:

BLM Challis Field Office  
PO Box 817  
721 E Main St  
Challis, ID 83226  
(208) 879-6200

**BLM Challis Field Office Recreation Sites' Business Plan  
Recommendations, Reviews, and Approvals**

Recommended by:

---

Vincent Guyer, Challis Field Manager (Acting) Date

Reviewed by:

---

Kimberlee Foster, Idaho Falls District Manager (Acting) Date

Approved by:

---

Meagan Conry, Idaho State Director (Acting) Date

This business plan was prepared by the Bureau of Land Management's Challis Field Office pursuant to the Federal Lands Recreation Enhancement Act of 2004 (16 U.S.C. 6801-6814) and BLM recreation fee program policies. It establishes future management goals and priorities for the Bayhorse, Cottonwood, Deadman Hole, East Fork, Little Boulder, Morgan Creek, and Joe T. Fallini Recreation Sites within the Challis Field Office.

## Table of Contents

Executive Summary.....	6
Table 1. Current and New Expanded Amenity Recreation Site Fees .....	7
Background and Authorities .....	8
Introduction to the Challis Field Office Recreation Program .....	10
Figure 1. Annual Recreational Visits to the Mackay SRMA.....	12
Figure 2. Annual Recreational Visits to the Upper Salmon River SRMA.....	13
Description of Each Existing or New Fee Site/Area .....	13
Bayhorse Recreation Site .....	13
Figure 3. Campsite at Bayhorse Recreation Site (BLM Photo).....	14
Cottonwood Recreation Site .....	14
Figure 4. Campsite at Cottonwood (BLM Photo).....	15
Deadman Hole Recreation Site .....	16
Figure 5. Campsite at Deadman (BLM Photo) .....	16
East Fork Recreation Site .....	17
Figure 6. Campsite at East Fork (BLM Photo).....	17
Little Boulder Recreation Site .....	18
Figure 7. Campsite at Little Boulder (BLM Photo).....	19
Morgan Creek Recreation Site.....	19
Figure 8. Campsite at Morgan Creek (BLM Photo) .....	20
Joe T. Fallini Recreation Site .....	20
Figure 9. Single Campsite at Joe T. Fallini (BLM Photo).....	21
Figure 10. Joe T. Fallini Third Loop Design .....	22
Figure 11. 3D Rendering of Joe T. Fallini Third Loop Design.....	22
Recreation Expanded Amenity E-commerce Fee Rates.....	23
Financial Analysis (Operating Costs and Revenues).....	23
Table 2. Operating Costs for the Recreation Program.....	24
Table 3. Overall RUP Revenue .....	25
Table 4. Current and Projected RUP Revenue.....	25
Recent and Future Improvement Projects and Services .....	25
Bayhorse Recreation Site .....	25
Table 5. Bayhorse Improvement Projects.....	25
Cottonwood Recreation Site .....	26

Table 6. Cottonwood Improvement Projects .....	26
Deadman Hole Recreation Site .....	27
Table 7. Deadman Hole Improvement Projects .....	27
East Fork Recreation Site .....	28
Table 8. East Fork Improvement Projects .....	28
Little Boulder Recreation Site .....	28
Table 9. Little Boulder Improvement Projects.....	29
Morgan Creek Recreation Site.....	29
Table 10. Morgan Creek Improvement Projects .....	29
Joe T. Fallini Recreation Site .....	30
Table 11. Joe T. Fallini Improvement Projects .....	30
Fair Market Value Assessment and Fee Rate Analysis .....	30
Table 12. Campground Amenity and Fee Comparison.....	31
Impacts of Fee Adjustment and Rationale .....	34
Prohibitions on Charging FLREA Fees.....	35
Fee Discounts .....	35
Public Outreach .....	36
Appendix A: Maps .....	38
Map 1. Bayhorse Recreation Site Overview .....	38
Map 2. Bayhorse Recreation Site Layout .....	39
Map 3. Cottonwood Recreation Site- Overview.....	40
Map 4. Cottonwood Recreation Site Layout.....	41
Map 5. Deadman Hole Recreation Site Overview .....	42
Map 6. Deadman Hole Recreation Site Layout .....	43
Map 7. East Fork Recreation Site Overview .....	44
Map 8. East Fork Recreation Site Layout .....	45
Map 9. Joe T. Fallini Recreation Site Overview .....	46
Map 10. Joe T. Fallini Recreation Site Layout.....	47
Map 11. Little Boulder Recreation Site Overview Map.....	48
Map 12. Little Boulder Recreation Site Layout.....	49
Map 13. Little Boulder Recreation Site Conceptual Site Layout .....	50
Map 14. Morgan Creek Recreation Site Overview .....	51
Map 15. Morgan Creek Recreation Site Layout .....	52

## Executive Summary

The Bureau of Land Management (BLM) Challis Field Office (CFO) prepared this recreation fee business plan pursuant to the Federal Lands Recreation Enhancement Act (FLREA) of December 2004 (P.L. 108-477, as amended) and BLM recreation permit and fee program policy. FLREA provides BLM with the authority to charge and collect recreation fees for benefits and services provided to visitors. FLREA also authorizes BLM to retain collected fees locally, outlines how revenues may be used, and identifies specific limitations on recreation fees. Collected revenue may be expended for benefits and services such as facility repair, maintenance, enhancement, interpretation, visitor information and services, visitor needs assessments, signs, restoration, law enforcement related to public use and recreation, and operating or capital costs directly associated with the recreation fee program.

BLM Manual 2930 requires field offices to produce a business plan when establishing new fee areas and sites and developing or changing recreation fees. The business plan outlines the fee program for the identified location and thoroughly discusses and explains how fees are consistent with the criteria set forth in FLREA. Business plans assist offices in determining appropriate fee rates, outlining the costs of administering fee programs, and identifying priorities for future fee program expenditures. The plan also serves as an outreach document to provide the public with opportunities to participate in the development of or modification of recreation fees.

The CFO has developed this Business Plan to inform the Resource Advisory Council (RAC), local government, and the general public of the fee adjustment for camping and day use at Bayhorse, Cottonwood, East Fork, and Joe T. Fallini Recreation Sites, and new camping fees at Deadman Hole, Little Boulder, and Morgan Creek Recreation Sites. This business plan illustrates a comprehensive financial picture about CFO's operations and finances. It identifies revenue shortfalls and fee implementation strategies to address these shortfalls.

Key findings of this business plan are:

1. Additional funding is needed for long- and short-term maintenance and improved outdoor recreation opportunities.
2. Fee adjustment is based on amenities provided and regional market comparisons.
3. These fees are applied in accordance with the Federal Lands Recreation Enhancement Act (FLREA).
4. Any future fee adjustments would utilize the Western U.S. Consumer Price Index (CPI).
5. Expanded amenity fees are currently collected through a variety of methods, including e-commerce platforms, self-serve envelopes, and on-site payment stations. However, consistent with agency direction and evolving federal

guidance, the BLM is moving toward minimizing cash and check transactions in favor of secure, digital payment technologies wherever feasible.

After careful consideration of the anticipated revenues and expenditures, and comparison with other regional recreation providers, the CFO will charge the following fees (see section Description of each Existing or New Fee Sites/Areas for a detailed list of amenities supporting FLREA compliance):

Table 1. Current and New Expanded Amenity Recreation Site Fees

<b>Expanded Amenity Site</b>	<b>Current Fees</b>	<b>New Fees</b>
<b>Bayhorse Recreation Site</b>	\$10 for RV/Tent Campsites	\$20 for RV/Tent campsites
	\$5 for RV/Tent Campsites when water is not available	\$15 for RV/Tent campsites when water is not available
<b>Cottonwood Recreation Site</b>	\$10 for RV/Tent Campsites	\$20 for RV/Tent campsites
	\$5 for all RV/Tent Campsites when water is not available	\$15 for RV/Tent campsites when water is not available
	\$5 for Dump Station for Campers	\$10 for Dump Station for all users
	\$10 for Dump Station for Non-Campers	
	\$25 for Group Day Use Shelter	\$50 for Group Day Use Shelter
	Advanced reservations not accepted	Advanced reservations accepted
<b>East Fork Recreation Site</b>	\$10 for RV/Tent Campsites	\$20 for RV/Tent campsites
	\$5 for RV/Tent Campsites when water is not available	\$15 for RV/Tent campsites when water is not available
<b>Deadman Hole Recreation Site</b>	No Fees	\$10 for RV/Tent campsites

<b>Little Boulder Recreation Site</b>	No Fees	\$10 for RV/Tent campsites
<b>Morgan Creek Recreation Site</b>	No Fees	\$10 for RV/Tent campsites
<b>Joe T. Fallini Recreation Site</b>	\$16 for Double RV Campsite	\$40 for Double Campsite
	\$10 for RV Campsite	\$20 for RV and Tent Campsites
	\$6 for Tent Campsite	
	\$8 for Double RV Campsites when water is not available	Removal of fee discounts when water is not available
	\$5 for RV Campsites when water is not available	
	\$3 for Tent Campsites when water is not available	
	\$4 per Electric Pedestal	Removal of electric hook-up fees and accounted for in individual site fees
	\$5 for Dump Station for Campers	\$10 for Dump Station for all users
	\$10 for Dump Station for Non-Campers	
	\$25 for Group Day Use Shelter	\$50 for Group Day Use Shelter
Advanced reservations not accepted	Advanced reservations accepted	

### Background and Authorities

This business plan has been prepared to meet the criteria defined in the Federal Lands Recreation Enhancement Act of 2004 (Public Law 108-447; Title VIII, Section 801; 16 U.S.C. 6801–6814). The authorities and regulations for this business plan are:

- **The Federal Land Policy and Management Act (FLPMA) of 1976** (Public Law 94-579; 43 U.S.C. 1701–1787), contains BLM’s general land use management authority over the public lands, and establishes outdoor recreation as one of the principal uses of those lands. Section 302 (b) of FLPMA directs the Secretary of the Interior to regulate through permits or other instruments the use of public

lands. Section 303 of FLPMA contains BLM's authority to enforce the regulations and impose penalties.

- **The Federal Lands Recreation Enhancement Act (FLREA) of 2004** repealed applicable portions of the Land and Water Conservation Fund Act and replaced BLM's authority to collect recreation fees. FLREA was reauthorized through the EXPLORE Act (Public Law 118-234) until 2031. This current law authorizes BLM to collect recreation fees at sites that meet certain requirements, allows BLM to keep the fee revenues at the local offices where they were collected, and directs how BLM will manage and utilize these revenues. FLREA also established the America the Beautiful – The National Parks and Federal Recreational Pass Program.
- **Title 43 Code of Federal Regulations, Part 2930 (43 CFR 2930) Permits for Recreation on Public Lands** contains the regulations governing BLM's recreation permitting program.

This business plan has also been prepared pursuant to all applicable BLM recreation fee program policies and guidance, including:

- BLM Manual 2930, Recreation Permits and Fees, Rel. 2-296 dated October 22, 2007
- BLM Handbook 2930-1, Recreation Permit and Fee Administration Handbook, Rel. 2-300 dated November 17, 2014

Definition of Expanded Amenity Fee taken from FLREA and the BLM recreation fee program policy and manual for the area covered under this business plan:

- **Expanded Amenity Recreation Fees** cover specialized outdoor recreation sites and services including but not limited to developed campgrounds with at least a majority of the following amenities: (1) tent or trailer spaces, (2) picnic tables, (3) drinking water, (4) access roads, (5) fee collection by an employee or agent of the BLM, (6) reasonable visitor protection, (7) refuse containers, (8) toilet facilities, (9) simple devices for containing a campfire (Sec. 803.(g)(2)(A) of REA).
- **Additional Expanded Amenity** recreation facilities or services include rental of cabins, group day-use or overnight sites, binoculars or other equipment (Sec.803.(g)(2)(C) of REA); use of hookups for electricity, cable, or sewer (Sec.803.(g)(2)(D) of REA); use of sanitary dump stations (SEC.803.(g)(2)(E) of REA); and use of reservation services (Sec.803.(g)(2)(G) of REA).

The BLM strives to manage recreation and visitor services to serve visitor outdoor recreation demands while helping to maintain sustainable setting conditions needed to conserve the public lands, so the visitors' desired recreation choices remain available.

The BLM's goals for providing recreation opportunities on BLM-administered lands and waters to the American people and their communities are to:

- Improve access to appropriate recreation opportunities,
- Ensure quality experience and enjoyment of natural resources, and
- Provide for and receive fair value in recreation.

This business plan will assist the CFO in meeting these recreation and visitor service goals. This business plan would be updated in the future if fees are to be considered at any new developed recreation site within the CFO.

### [Introduction to the Challis Field Office Recreation Program](#)

CFO manages 792,567 acres of public lands and waters located in Custer and Lemhi Counties in East-Central Idaho. The CFO manages three special recreation management areas (SRMAs) within the BLM Idaho Falls District: Mackay Reservoir, Upper Big Lost River and Upper Salmon River SRMAs. Remaining public lands and waters within the CFO, not identified as a SRMA, are classified as the Challis Extensive Resource Management Area (ERMA). These SRMA and ERMA classifications were identified in the Challis Resource Management Plan (1999). Recreational opportunities present within the SRMAs, and ERMA include a diverse range of recreational settings and experiences to facilitate the following experiences: developed and dispersed camping, fishing, hunting, environmental education and interpretation, hiking and mountain biking trails, horse-back riding, rafting, and off-roading experiences. Recreation opportunities allow visitors to enjoy, explore, and learn about the natural and cultural resources of East-Central Idaho. For CFO to provide safe and enjoyable experience to its visitors, clear documentation and description of its financial operations is essential to assessing the complexity and needs of outdoor recreation use.

An SRMA is an area where recreation is emphasized for BLM investment and management. Per CFO's RMP (1999), the following are the designated SRMAs and management objectives:

- Goal 1: Protect the unique recreation values of the following areas:
  1. Upper Salmon River SRMA (108,280 acres)
  2. Upper Big Lost River SRMA (4,610 acres)
  3. Mackay Reservoir SRMA (88 acres)
- Rationale: The Main Salmon River and East Fork Salmon River attract and concentrate substantial numbers of recreationists. The outstanding opportunities for river recreation, ease of access, international name recognition, and proximity of the area to other prominent recreation centers logically points toward increased popularity. The Upper Big Lost River recreational use situation mirrors the Upper Salmon River situation, on a smaller scale. Current and projected recreation popularity warrant special

management for the area. The Big Lost River corridor has become a major travel route connecting Highway 93 and the Ketchum and Sun Valley, Idaho area.

The remainder of BLM-managed public lands and waters not managed as an SRMA, are classified as the Challis Extensive Resource Management Area (ERMA). Per CFO's RMP (1999), the following are the management objectives for the Challis ERMA:

- Goal 3: Provide recreation opportunities for the remainder of the Resource Area not included in a SRMA, including areas specifically for unstructured outdoor experiences, trails (e.g., hiking, horseback riding, bicycling), recreational mineral collecting, and OHV use.
- Rationale: The BLM manual requires the establishment of Extensive Recreation Management Areas (ERMAs) during the RMP process.
  1. Those portions of the Resource Area not designated as an SRMA would be managed as the Challis Extensive Recreation Management Area (679,589 acres)

This business plan outlines the expanded amenity fee adjustment for Bayhorse, Cottonwood, East Fork and Joe T. Fallini Recreation Sites, and the new expanded amenity fee at Deadman Hole, Little Boulder, and Morgan Creek Recreation Sites. The intent of adjusting the expanded amenity fee and implementing new fees is not to maximize revenue, rather to maintain the condition of amenities currently offered at the sites, develop new amenities as appropriate, help protect natural resources, provide public health and safety, and facilitate access to public lands. Fee sites assist in funding recreation sites and services through a balanced and affordable strategy of fee implementation. This business plan includes a description of the fees and fee sites, associated operating costs, anticipated expenditures of fee revenue, financial analysis of market comparisons, and a communications plan for public participation and outreach.

CFO works with local community partners to enhance community ties, provide safe and clean recreation sites, provide quality recreation experiences, conduct environmental education and outreach, conserve native vegetation and wildlife species, and maintain the quality of the local watershed. Some of these partners include, but are not limited to, Custer County, Custer County School District, City of Challis, Idaho Department of Fish and Game, Idaho Department of Parks and Recreation, Backcountry Hunters and Anglers, Trout Unlimited, Challis Community Trails Alliance, Idaho Singletrack Alliance, and Custer and Lost River Economic Development Associations. The fees would provide the CFO with increased funding opportunities that assist in fostering these partnerships.

Visitor use has steadily increased throughout the CFO and for the BLM to accommodate increasing visitor use, while providing visitors with a safe and high-quality experience, an adjustment in the recreation fee structure is necessary. It is vital to maintain a

positive fee balance in recreation accounts to provide program services throughout the year, such as sanitation services, supplies, maintenance, seasonal labor, and project work. Recreation fee accounts enable BLM to better address threats to public health and safety and allocate funds for future recreation projects and infrastructure within expanded amenity sites. This would also allow other recreation accounts to be directed towards expanding and enhancing recreation opportunities outside of expanded amenity fee sites, and towards partnerships that benefit the community with environmental education, outreach events, and service projects.

The following are recreational visits to recreation management areas from 2020 to 2024. The BLM defines a recreational visit as the entry of a person onto lands or waters, administered by the BLM, for the pursuit of recreational experiences regardless of duration. As shown in Figures 1 and 2, recreation visits to Mackay and Upper Salmon River SRMAs have steadily increased between 2020 and 2024. This trend reinforces the need to maintain safe, sanitary, and sustainable recreation facilities at impacted sites.

Figure 1. Annual Recreational Visits to the Mackay SRMA

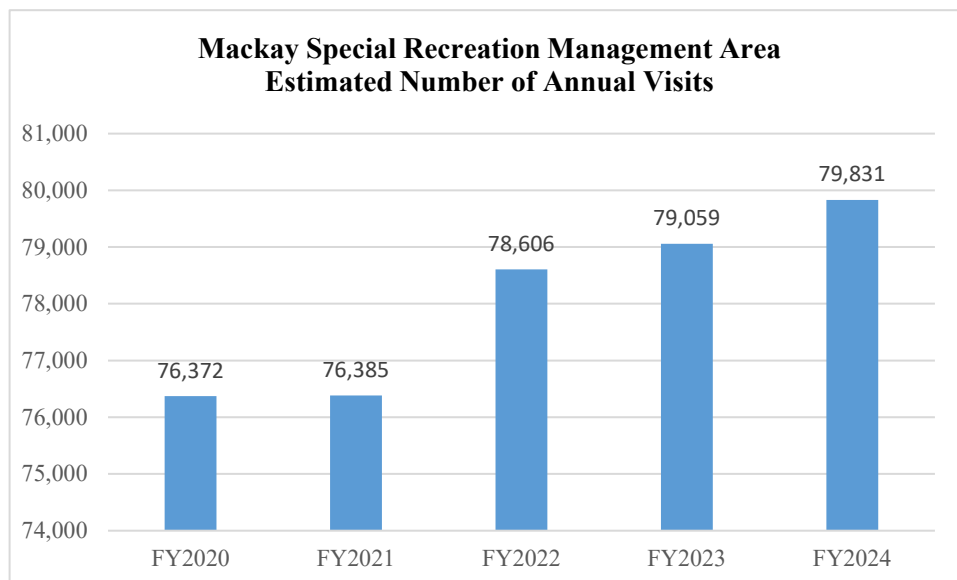
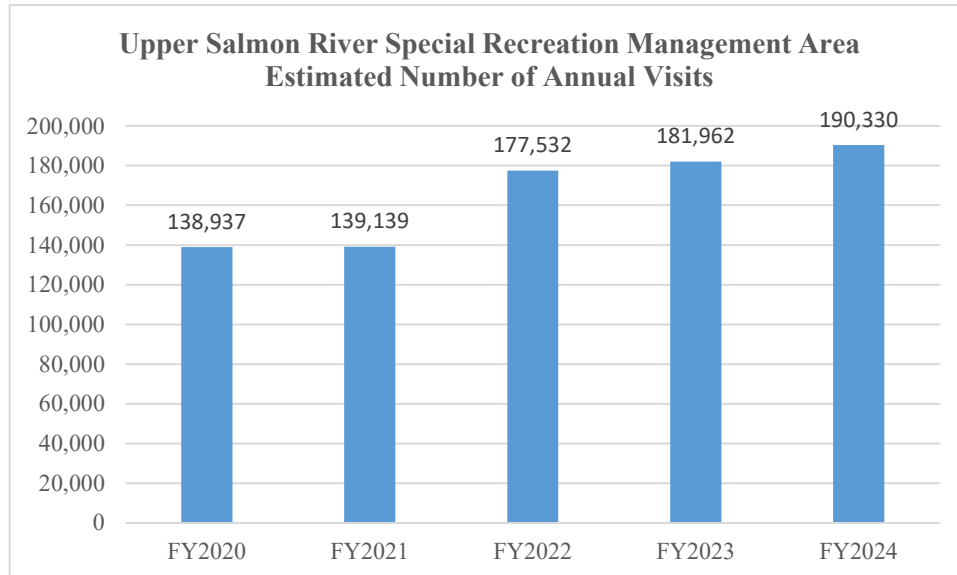


Figure 2. Annual Recreational Visits to the Upper Salmon River SRMA



### Description of Each Existing or New Fee Site/Area

The CFO is adjusting the expanded amenity fee at four recreation sites, Bayhorse, Cottonwood, East Fork, and Joe T. Fallini and introducing a new expanded amenity at Deadman Hole, Little Boulder, and Morgan Creek Recreation Sites. Listed below are descriptions of the recreation sites and their associated FLREA expanded amenity fee requirements.

#### Bayhorse Recreation Site

Bayhorse Recreation Site resides along Highway 75 between Challis and Stanley, Idaho. The campground meets the criteria in FLREA to charge the expanded amenity fee because the following amenities are provided (only a majority of the following is required):

- tent/trailer spaces,
- picnic tables,
- drinking water,
- access road,
- fee collection,
- reasonable visitor protection,
- refuse containers,
- toilet facilities, and
- campfire rings.

In addition, the campground offers barbeque grills, boat ramp, and seasonal campground host.

The existing expanded amenity fees are \$10 per night for any campsite. There is no day-use fee. Bayhorse Recreation Site reduces fees when the water is turned off, typically October through May, annually.

The CFO is proposing to adjust the existing expanded amenity fee at this recreation site.

Figure 3. Campsite at Bayhorse Recreation Site (BLM Photo)



#### Cottonwood Recreation Site

Cottonwood Recreation Site resides along Highway 93 between Challis and Salmon, Idaho. The campground meets the criteria in FLREA to charge the expanded amenity fee because the following amenities are provided (of which only a majority of any of the following are required):

- paved tent/trailer spaces,
- picnic tables,
- drinking water,

- paved access road,
- fee collection,
- reasonable visitor protection,
- refuse containers,
- toilet facilities, and
- campfire rings.

In addition, the campground offers barbeque grills, boat ramp, seasonal campground host, black and greywater dump station, and a reservable day-use area with a pavilion, large barbeque grill and picnic tables, and horseshoe pits.

The existing expanded amenity fees are \$10 per night for any camp site and the group day use shelter can be reserved for \$25 per day. Additional expanded amenity fees include a \$5 dump station fee and a \$10 dump station fee for non-campers. Cottonwood Recreation Site reduces fees when the water is turned off, typically October through May, annually. The Dump Station is also closed during this time.

The CFO is proposing to adjust the existing expanded amenity fees at this recreation site and implement a reservation service during the summer season, consistent with e-commerce technologies authorized under FLREA Section 6802(g)(2)(G).

Figure 4. Campsite at Cottonwood (BLM Photo)



### Deadman Hole Recreation Site

Deadman Hole Recreation Site resides approximately 13 miles southwest of Challis, Idaho off Highway 75. The campground meets the criteria in FLREA to charge the expanded amenity fee because the following amenities are provided (of which only a majority of any of the following are required):

- tent/trailer spaces,
- picnic tables,
- drinking water,
- access road,
- reasonable visitor protection,
- toilet facilities, and
- campfire rings.

In addition, the campground offers shade shelters and a boat ramp.

There are no existing expanded amenity fees at the recreation site. The CFO is proposing to implement a new expanded amenity fee at this recreation site. If implemented, the CFO would provide one dumpster annually from May to September and install a fee collection box.

Figure 5. Campsite at Deadman (BLM Photo)



### East Fork Recreation Site

East Fork Recreation Site resides along Highway 75 between Challis and Stanley, Idaho. The campground meets the criteria in FLREA to charge the expanded amenity fee because the following amenities are provided (of which only a majority of any of the following are required):

- tent/trailer spaces,
- picnic tables,
- drinking water,
- access road,
- fee collection,
- reasonable visitor protection,
- refuse containers,
- toilet facilities, and
- campfire rings.

In addition, the campground offers a boat ramp and seasonal campground host.

The existing expanded amenity fees are \$10 per night for any campsite. There is no day-use fee. East Fork Recreation Site reduces fees when the water is turned off, typically October through May annually.

The CFO is proposing to adjust the existing expanded amenity fee at this recreation site.

Figure 6. Campsite at East Fork (BLM Photo)



### Little Boulder Recreation Site

Little Boulder Recreation Site resides on the East Fork of the Salmon River, approximately 20 miles south on East Fork Road from Highway 75 near Clayton, Idaho.

The campground meets the criteria in FLREA to charge the expanded amenity fee because the following amenities are provided (of which only a majority of any of the following are required):

- tent/trailer spaces,
- picnic tables,
- drinking water,
- access road,
- reasonable visitor protection,
- toilet facilities, and
- campfire rings.

The CFO recently completed a conceptual design plan to relocate and expand the recreation site to move recreational amenities outside of the 100-year floodplain to address bank erosion concerns and expand the site onto BLM-managed land to the south, adding additional campsites and expanding the parking area. The recreation site is adjacent to three wilderness areas, which are the Cecil D. Andrus-White Clouds, Hemingway-Boulders, and Jim McClure-Jerry Peak Wilderness Areas. Visitors currently use the recreation site for staging to access the wilderness areas and for overnight camping.

There are no existing expanded amenity fees at the recreation site, however the CFO historically charged camping fees at the recreation site but ceased due to its remote location. The CFO will be implementing a new expanded amenity fee at this recreation site after implementation of the campground relocation and expansion project. Additionally, when the expanded amenity fee is implemented, the CFO would provide one large bear-safe trash receptacle and install a fee collection box.

Figure 7. Campsite at Little Boulder (BLM Photo)



### Morgan Creek Recreation Site

Morgan Creek Recreation Site- resides off Morgan Creek Road, approximately 14 miles north of Challis, Idaho off Highway 93. The campground meets the criteria in FLREA to charge the expanded amenity fee because the following amenities are provided (of which only a majority of any of the following are required):

- tent/trailer spaces,
- picnic tables,
- drinking water,
- access road,
- reasonable visitor protection,
- toilet facilities, and
- campfire rings.

There are no existing expanded amenity fees at the recreation site. The CFO is proposing to implement a new expanded amenity fee at this recreation site. If implemented, the CFO would provide one large bear-safe trash receptacle and install a fee collection box.

Figure 8. Campsite at Morgan Creek (BLM Photo)



### Joe T. Fallini Recreation Site

The Joe T. Fallini Recreation Site is located off Highway 93 north of Mackay, Idaho on the banks of Mackay Reservoir. The campground meets the criteria in FLREA to charge the expanded amenity fee because the following amenities are provided (of which only a majority of any of the following are required):

- paved tent/trailer spaces,
- picnic tables,
- drinking water,
- paved access road,
- fee collection,
- reasonable visitor protection,
- refuse containers,
- toilet facilities, and
- campfire rings.

In addition, the campground offers barbeque grills, boat ramp, seasonal campground host, electric and water hook-ups, black and greywater dump station, interpretive trail, day-use area with four picnic shelters, and one reservable covered group pavilion.

The existing expanded amenity fee at Joe T. Fallini is \$6 per night for tent-only sites, \$10 per night for RV sites without electricity, \$20 per night for double RV sites without

electricity, \$4 per night per electric pedestal, \$5 dump fee for campers, and \$10 dump fee for non-campers. There is no day use fee, but the group day use shelter can be reserved for \$25 per day. Joe T. Fallini Recreation Site reduces fees when the water is turned off, typically October through May annually. The Dump Station is also closed during this time. However, the electric pedestals remain on throughout the year.

The CFO is proposing to adjust the existing expanded amenity fees at this recreation site and implement an advanced reservation system during the summer season through e-commerce technologies.

Figure 9. Single Campsite at Joe T. Fallini (BLM Photo)



Figure 10. Joe T. Fallini Third Loop Design

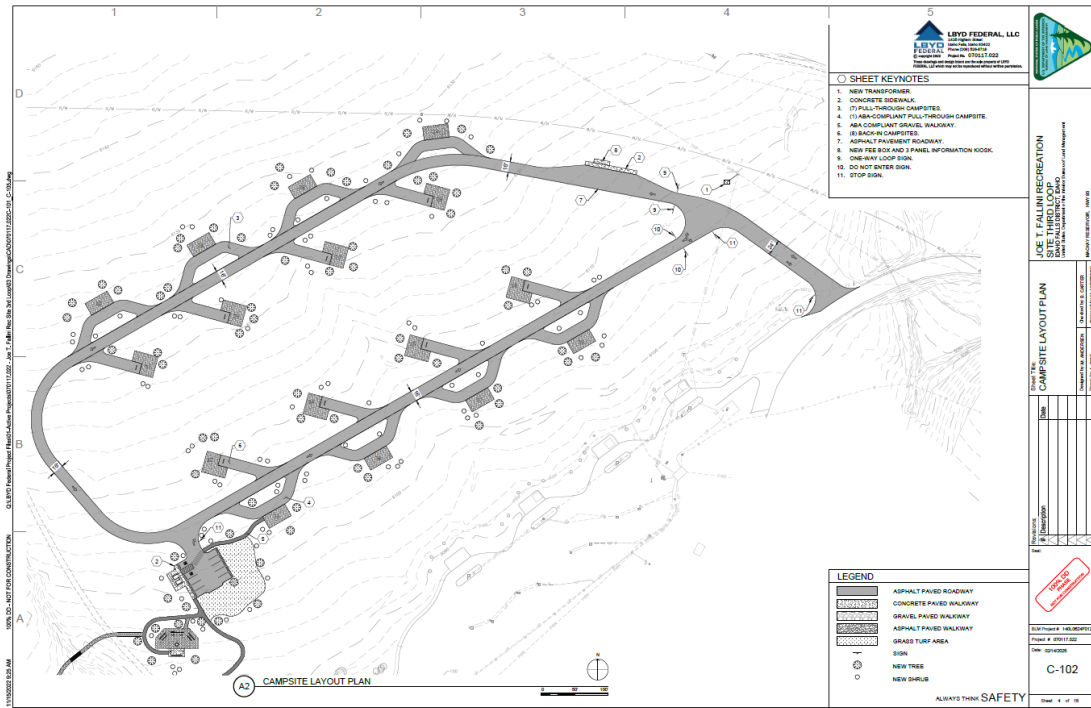
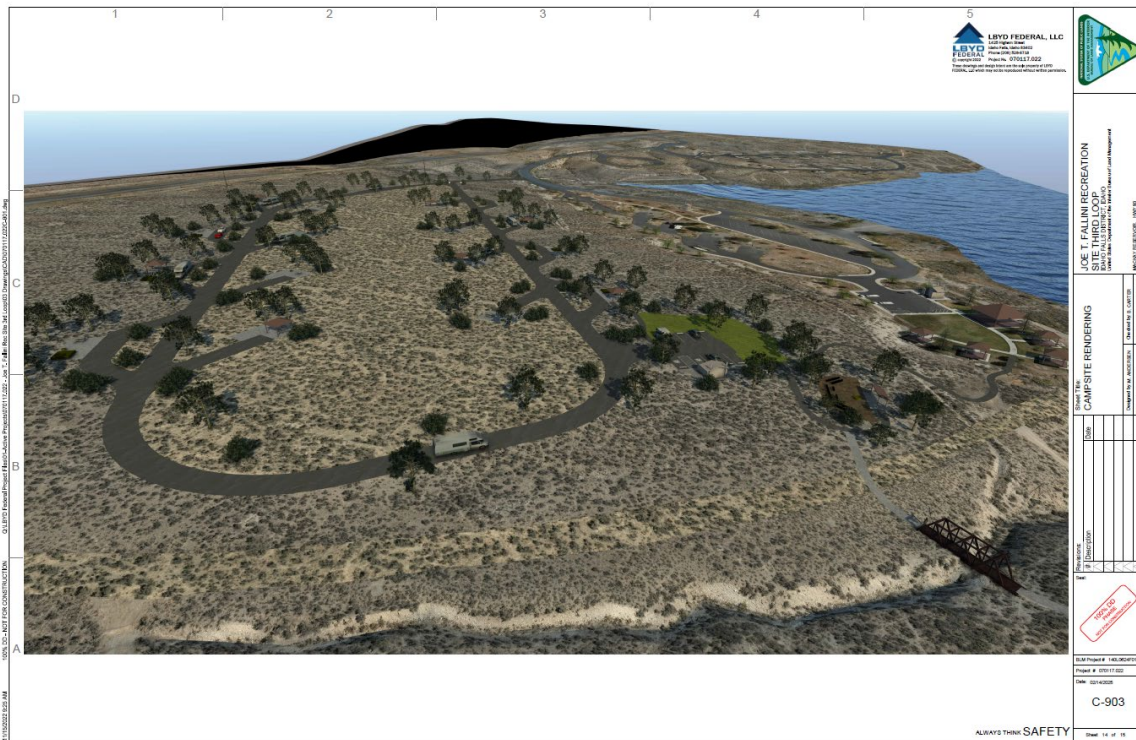


Figure 11. 3D Rendering of Joe T. Fallini Third Loop Design



### Recreation Expanded Amenity E-commerce Fee Rates

The CFO will use various e-commerce technologies as directed in BLM Instruction Memorandum 2022-010, to provide recreation visitors opportunities to find, reserve and pay for campsites and day use within the field office. Most of these options are provided through the interagency reservation service Recreation.gov. If the CFO decides to add reservation services or other types of e-commerce options available in the future, an expanded amenity fee for reservation services would be charged in addition to any other standard or expanded amenity fees in accordance with 16 U.S.C. 6802(g)(2)(G).

The reservation service fee is subject to contracting requirements and will be adjusted with contract changes or with future updates to the business plan. The CFO currently uses the Scan and Pay mobile payment for first-come, first-served campsites at Cottonwood and Joe T. Fallini Recreation Sites. The CFO is proposing to implement an advanced reservation system at the Joe T. Fallini Recreation Site and may consider implementing an advanced reservation system at other recreation sites in the future. For visitors who wish not to pay the expanded amenity fee of reservation services, the field office will attempt to provide a blend of reservation and first come-first served options - unless the office moves the fee site/area entirely to e-commerce. Other payment options may also be considered in the future as technology and software develops.

### Financial Analysis (Operating Costs and Revenues)

Funding to manage recreation fee sites comes from two sources. The first source is annual appropriations from Congress in the form of Management of Lands and Resources (MLR). MLR funding has regulatory mandated purposes and limitations for use and is intended for routine operations. For fiscal year 2024, approximately 95% of the MLR recreation operations budget was spent at 4 of the 24 recreation sites in the CFO, which were Bayhorse, Cottonwood, East Fork, and Joe T. Fallini Recreation Sites. The second funding source is the recreation fee program which collects fees generated by recreation use permits (RUPs).

The expanded amenity fee-based sites allow for an additional avenue of funding to supplement MLR funding. The supplemental fee revenue from RUPs is reinvested back into the respective recreation sites to enhance recreations opportunities, visitor services, facility maintenance, and community partnerships.

The CFO expends considerable resources in managing the recreation sites. Direct costs for recreation management include BLM labor, toilet servicing and pumping, vehicles and vehicle maintenance, law enforcement, maintaining signage, maintenance of materials and equipment, trash collection, and reimbursement of campground hosts. The CFO spends approximately \$120,000 to \$180,000 each year to operate and maintain these recreation sites. The tables below are a breakdown of approximate costs associated with managing these sites, the historic RUPs issued, and revenue

generated. Expenditures for operating costs represent a typical year, although some years may be higher due to unforeseen circumstances. Discrepancies exist for the number of RUPs issued and generated revenue due to visitors either not paying or not paying the correct amount for expanded amenity fees. The CFO intends to install new and improved signage along with implementing e-commerce technologies to enhance compliance with RUP requirements.

The CFO applies the following objectives as guidance for the expenditure of fee revenues collected:

- 1) Maintain existing developed recreation facilities at recreation sites in a safe, clean and operable condition.
- 2) Develop additional recreation facilities, where appropriate based on public demand and thorough planning, to maximize visitor experience and safety.
- 3) Continue to preserve the natural resources present within recreation sites.
- 4) Maintain the site steward program which provides BLM presence and customer services to the recreating public.
- 5) Maintain and improve environmental education and interpretive services, including outreach events at recreation sites in collaboration with partner groups.
- 6) Increase the law enforcement presence at recreation sites to provide a sense of security to the visitors and ensure protection of natural and cultural resources.

Table 2 provides an overview of the approximate costs associated with operating the Recreation Program. Fee collection and processing costs include labor for collecting payments, counting and handling cash, and issuing money orders. Recreation site operating costs primarily cover labor for the Outdoor Recreation Planner to monitor and maintain campgrounds and other recreation sites. Equipment, supplies, and service costs include, but are not limited to, septic pumping, trash collection, campground host reimbursements, lawn care equipment and servicing, access road grading, pressure sprayer servicing, and cleaning supplies and paper products.

**Table 2. Operating Costs for the Recreation Program**

<b>Approximate FY24 Direct Costs</b>	<b>Costs for Fee Collection/Processing</b>	<b>Recreation Site Operating Costs</b>
Labor – GS-11 Outdoor Recreation Planner	\$3,000	\$50,000
Labor – GS-05 Contact Representative	\$3,500	\$0
Equipment/Supplies/Services	\$5,000	\$95,000
<b>Subtotal</b>	<b>\$11,500</b>	<b>\$145,000</b>
<b>Total</b>	<b>\$156,500</b>	

Table 3. Overall RUP Revenue

Fiscal Year	RUPs Issued	Revenue from RUPs
2022	2,501	\$48,183.11
2023	2,568	\$44,923.81
2024	2,376	\$43,270.20

Table 4. Current and Projected RUP Revenue

Recreation Site	FY24 RUPs Issued	FY24 Revenue	Projected Revenue with Fee Adjustment/Implementation
Bayhorse	352	\$4356.16	\$7,000
Cottonwood	839	\$9,781.74	\$16,000
Deadman Hole	0	\$0.00	\$1,500*
East Fork	186	\$2,037	\$3,600
Little Boulder	0	\$0.00	\$1,500*
Morgan Creek	0	\$0.00	\$1,500*
Joe T. Fallini	1,222	\$27,095.30	\$31,100

\* The projected RUP revenue from new recreation fee sites is based on historical visitor use data, using conservative estimates for anticipated visitation.

### Recent and Future Improvement Projects and Services

The recreation fee sites undergo improvement projects and services on an annual basis with the objective to enhance visitor experiences and to protect natural resources. While these projects and services provide long-term benefits to the public, it requires funding to address these objectives. With the increased demand for outdoor recreation and the need to ensure sustainability, adjusting expanded amenity fees is essential to meet these objectives, maintain the quality of services, and support the growing number of visitors to these recreation sites.

### Bayhorse Recreation Site

The following are approximate costs of recent and potential future improvement projects and services at Bayhorse Recreation Site:

Table 5. Bayhorse Improvement Projects

FY23-24 Recent Improvement Projects and Services	Cost
Reimbursements for one seasonal campground host	\$4,000 annually
Trash collection and rental for one dumpster	\$715 annually
Toilet pumping and servicing for one dual vault toilet and campground holding tank	\$1,000 annually
Construction of two extra-long, back-in campsites to accommodate larger RVs	\$2,000
Local artist painted nature-inspired murals inside each stall of the dual vault toilet.	\$2,500

Maintenance and replacement of amenities and equipment	\$6,000
<b>Total</b>	\$16,215
<b>Potential Future Projects</b>	<b>Estimated Cost</b>
Reimbursements for one seasonal campground host	\$4,000 annually
Trash collection and rental for one dumpster	\$715 annually
Dual vault toilet pumping and servicing	\$1,000 annually
Replace campsite number posts	\$700
Replace informational and interpretive three-panel kiosk and signage	\$7,000
Re-construct the access road and potable and irrigation water systems ( <i>funded through the Great American Outdoor Act</i> )	\$225,000
Repair and replace the boundary fencing ( <i>supplemental funding through the Great American Outdoor Act</i> )	\$50,000
<b>Total</b>	\$288,415

### Cottonwood Recreation Site

The following are approximate costs of recent and potential future improvement projects and services at Cottonwood Recreation Site:

Table 6. Cottonwood Improvement Projects

<b>FY23-24 Recent Improvement Projects and Services</b>	<b>Cost</b>
Reimbursements for one seasonal campground host	\$4,000 annually
Trash collection and rental of two dumpsters	\$1,430 annually
Toilet pumping and servicing for four single vault toilets and campground host holding tank	\$2,500 annually
Maintenance and replacement of amenities and equipment	\$6,000
Hazardous tree removal and trimming	\$9,000
Installation of site-specific potable water hook-ups for six campsites	\$5,000
Installation of dog waste stations	\$2,000
Completion of the Cottonwood Bank Stabilization Contract	\$1,000,000
<b>Total</b>	\$1,029,930
<b>Potential Future Projects</b>	<b>Estimated Cost</b>
Reimbursements for one seasonal campground host	\$4,000 annually

Trash collection and rental of two dumpsters	\$2,000 annually
Toilet pumping and servicing four single vault toilets	\$2,500 annually
Install new drinking hydrants	\$6,000
Install Electric RV Hook-ups	\$50,000
Maintenance and replacement of amenities	\$2,000
Re-pave and surface the access road	\$100,000
Implement the scan and pay e-commerce platform and/or advanced reservation system	\$3,000
Upgrade and repair the potable water and irrigation systems	\$150,000
<b>Total</b>	\$319,500

### Deadman Hole Recreation Site

The following are approximate costs of recent and potential future improvement projects and services at Deadman Hole Recreation Site:

Table 7. Deadman Hole Improvement Projects

<b>FY23-24 Recent Improvement Projects and Services</b>	<b>Cost</b>
Toilet pumping and servicing for two single vault toilets	\$1,000
Maintenance and replacement of amenities and equipment	\$2,000
Re-grading and filling access road	\$1,500
<b>Total</b>	\$4,500
<b>Potential Future Projects</b>	<b>Estimated Cost</b>
Toilet pumping and servicing for two single vault toilets	\$1,000 annually
Trash collection and rental for one dumpster	\$715 annually
Replace informational and interpretive three-panel kiosk and signage	\$7,000
Replace single vault toilets	\$120,000
Install iron ranger fee collection tube	\$800
<b>Total</b>	\$129,515

### East Fork Recreation Site

The following are approximate costs of recent and potential future improvement projects and services at East Fork Recreation Site:

Table 8. East Fork Improvement Projects

<b>FY23-24 Recent Improvement Projects and Services</b>	<b>Cost</b>
Reimbursements for one seasonal campground host	\$4,000 annually
Trash collection and rental for one dumpster	\$715 annually
Toilet pumping and servicing for one dual vault toilet and campground host holding tank	\$1,000 annually
Removal and treatment of Russian Olive Trees	\$2,000
Graded and filled the access road	\$1,500
Maintenance and replacement of amenities and equipment	\$6,000
<b>Total</b>	\$15,215
<b>Potential Future Projects</b>	<b>Estimated Cost</b>
Reimbursements for one seasonal campground host	\$4,000 annually
Trash collection and rental for one dumpster	\$715 annually
Toilet pumping and servicing for one dual vault toilet	\$1,000 annually
Resurface floor and re-paint interior and exterior walls of the dual vault toilet	\$1,500
Replace campsite number posts	\$1,000
Repair the boundary fencing	\$15,000
Replace informational and interpretive three-panel kiosk and signage	\$7,000
Upgrade and repair the potable and irrigation water systems	\$60,000
<b>Total</b>	\$90,215

### Little Boulder Recreation Site

The following are approximate costs of recent and potential future improvement projects and services at Little Boulder Recreation Site:

Table 9. Little Boulder Improvement Projects

<b>FY23-24 Recent Improvement Projects and Services</b>	<b>Cost</b>
Toilet pumping and servicing for one single vault toilet	\$500 annually
Installation of a new dual vault toilet	\$60,000
Maintenance and replacement of amenities and equipment	\$2,000
<b>Total</b>	\$62,500
<b>Potential Future Projects</b>	<b>Estimated Cost</b>
Toilet pumping and servicing for one dual vault toilet	\$1,000 annually
Construction of the relocation and expansion project to add additional campsites and expand the access road and parking area	\$250,000
Rehabilitate the riverbank via seeding and native plantings	\$5,000
Installation of new bear-safe trash receptable	\$1,500
Replace informational and interpretive three-panel kiosk and signage	\$7,000
Install iron ranger fee collection tube	\$800
<b>Total</b>	\$265,300

**Morgan Creek Recreation Site**

The following are approximate costs of recent and potential future improvement projects and services at Morgan Creek Recreation Site:

Table 10. Morgan Creek Improvement Projects

<b>FY23-24 Recent Improvement Projects and Services</b>	<b>Cost</b>
Toilet pumping and servicing for one dual vault toilet	\$500 annually
Installation of new kiosk panel and informational sign	\$3,000
Maintenance and replacement of amenities and equipment	\$2,000
<b>Total</b>	\$5,500
<b>Potential Future Projects</b>	<b>Estimated Cost</b>
Toilet pumping and servicing for one dual vault toilet	\$500 annually

Installation of new bear-safe trash receptable	\$1,500
Install iron ranger fee collection tube	\$800
Install campsite post markers	\$500
<b>Total</b>	<b>\$3,300</b>

### Joe T. Fallini Recreation Site

The following are approximate costs of recent and potential future improvement projects and services at Joe T. Fallini Recreation Site:

Table 11. Joe T. Fallini Improvement Projects

<b>FY23-24 Recent Improvement Projects and Services</b>	<b>Cost</b>
Reimbursements for two seasonal campground hosts	\$8,000 annually
Trash collection and rental for four dumpsters	\$2,860 annually
Toilet pumping and servicing for five dual vault toilets and two campground host holding tanks	\$3,500 annually
Conceptual design of third camping loop <i>(funded through the Bipartisan Infrastructure Law)</i>	\$120,000
Maintenance and replacement of amenities and equipment	\$35,000
<b>Total</b>	<b>\$169,360</b>
<b>Potential Future Projects</b>	<b>Estimated Cost</b>
Reimbursements for two seasonal campground hosts	\$8,000 annually
Trash collection and rental for four dumpsters	\$2,860 annually
Toilet pumping and servicing for five dual vault toilets	\$3,500 annually
Implementing an advanced reservation system through recreation.gov	\$8,000
Installing wireless internet	\$5,000
Third Loop Construction <i>(potential funding through internal and external sources, e.g., grants)</i>	\$3,000,000
Upgrading and repairing potable water and irrigation system	\$50,000
<b>Total</b>	<b>\$3,077,360</b>

### Fair Market Value Assessment and Fee Rate Analysis

The rationale for the expanded amenity fee is determined using a Fair Market Assessment that compares similar sites and facilities in the region to CFO recreation

fee sites. Site similarity is based on sites offering tent camping, in addition to vehicle and trailer camping. Similar sites and facilities in the geographical area include the United States Forest Service (USFS) Wildhorse, Flat Rock, and Mormon Bend Campgrounds, the Idaho Department of Parks and Recreation (IDPR) Challis Hot Springs, the National Park Service (NPS) Lava Flow Campground, and the privately owned Wagon Wheel and Round Valley RV Parks. The pricing at these sites varies due to them being managed by federal, state, and private businesses, in addition to offering different facilities which influences pricing. Forest Service managed campgrounds fees range from \$10 to \$40, National Park Service managed campground is \$15, Idaho Department of Parks and Recreation managed campground ranges from \$40 to \$43, and privately owned RV parks range from \$43 to \$45.

Table 12 outlines the sites and their amenities and facilities with the corresponding fees. Among other campgrounds in the area, CFO recreation sites have more facilities than most in the geographical area (with the exception of privately owned businesses, like RV Parks).

**Table 12. Campground Amenity and Fee Comparison**

<b>Campground</b>	<b>Agency</b>	<b>Location</b>	<b>Fee/Night</b>	<b>Amenities</b>
Bayhorse	BLM - Challis Field Office	10 miles southwest of Challis, ID off Highway 75	Current Fees: \$10 \$5 when water is turned off  Adjustment: \$20 \$15 when water is turned off	Tent/RV Spaces, Picnic Tables, Fire Rings/Grills, Toilet Facilities, Trash Receptacles, Drinking Water, Access Roads, Visitor Protection, Fee Collection, Boat Ramp
Cottonwood	BLM - Challis Field Office	15 miles north of Challis, ID off Highway 93	Current Fees: \$10 \$5 when water is turned off \$5 for Dump Station (Campers) \$10 for Dump Station (Non-Campers)  Adjustment: \$20 \$15 when water is turned off	Tent/RV Spaces, Picnic Tables, Fire Rings/Grills, Toilet Facilities, Trash Receptacles, Drinking Water, Access Roads, Visitor Protection, Fee Collection, Boat Ramp, Horseshoe Pit, Day-Use Area

Campground	Agency	Location	Fee/Night	Amenities
			\$10 for Dump Station (All Users)	
Deadman Hole	BLM - Challis Field Office	13 miles southwest of Challis, ID off Highway 75	Current Fees: \$0.00 New Fees: \$10	Tent/RV Spaces, Picnic Tables, Fire Rings, Shade Shelters, Toilet Facilities, Drinking Water, Access Roads, Visitor Protection
East Fork	BLM - Challis Field Office	20 miles southwest of Challis, ID off Highway 75	Current Fees: \$10 \$5 when water is turned off Adjustment: \$20 \$15 when water is turned off	Tent/RV Spaces, Picnic Tables, Fire Rings/Grills, Shade Shelters, Toilet Facilities, Trash Receptacles, Drinking Water, Access Roads, Visitor Protection, Fee Collection
Little Boulder	BLM - Challis Field Office	24 miles south of Clayton, ID off East Fork Road	Current Fees: \$0.00 New Fees: \$10	Tent/RV Spaces, Picnic Tables, Fire Rings, Toilet Facilities, Drinking Water, Access Roads, Visitor Protection
Morgan Creek	BLM - Challis Field Office	14 miles north of Challis, ID off Morgan Creek Road	Current Fees: \$0.00 New Fees: \$10	Tent/RV Spaces, Picnic Tables, Fire Rings, Toilet Facilities, Drinking Water, Access Roads, Visitor Protection
Joe T. Fallini	BLM - Challis Field Office	5 miles north of Mackay, ID off Highway 93	Current Fees: \$6 for Tent Sites \$10 for Single (without electricity) \$14 for Single (with electricity) \$16 for Double (without electricity) \$20-24 for Double (with electricity) \$5 for Dump Station (Campers)	Tent/RV Spaces, RV Hook-Ups, Picnic Tables, Fire Rings/Grills, Toilet Facilities, Trash Receptacles, Drinking Water, Access Roads, Visitor Protection, Fee Collection, Boat Ramp, Day-Use Area

Campground	Agency	Location	Fee/Night	Amenities
			\$10 for Dump Station (Non-Campers)  Adjustment: \$10 for Tent Sites \$20 for Single \$40 for Double \$10 for Dump Station (All Users) No separate electricity fees No fee discount when water is turned off	
Mormon Bend	USFS - Sawtooth Ranger District	7 miles northeast of Stanley, ID off Highway 75	\$20 for Single \$40 for Double	Tent/RV Spaces, Picnic Tables, Fire Rings/Grills, Toilet Facilities, Trash Receptacles, Drinking Water, Access Roads, Visitor Protection, Fee Collection, Boat Ramp
Wildhorse	USFS - Lost River Ranger District	49 miles east of Mackay, ID off Wildhorse Creek Road	\$10	Tent/RV Spaces, Picnic Tables, Fire Rings/Grills, Toilet Facilities, Drinking Water, Access Roads, Visitor Protection, Fee Collection
Flat Rock	USFS - Yankee Fork Ranger District	15 miles northeast of Stanley, ID off Yankee Fork Road	\$10	Tent/RV Spaces, Picnic Tables, Fire Rings/Grills, Toilet Facilities, Drinking Water, Access Roads, Visitor Protection, Fee Collection
Challis Hot Springs	IDPR - Land of the Yankee Fork	9 miles east of Challis, ID off Hot Springs Road	\$43 (50-amp RV Camping) \$40 (30-amp RV Camping)	Tent/RV Spaces, RV Hook-Ups, Picnic Tables, Fire Rings/Grills, Toilet Facilities, Trash Receptacles, Drinking Water, Access Roads, Visitor Protection, Fee Collection, Day-Use Area
Lava Flow	NPS - Craters of the Moon	60 miles southwest of Acro, ID off Highway 26	\$15	Tent/RV Spaces, Picnic Tables, Fire Rings/Grills, Toilet Facilities, Trash Receptacles, Drinking Water,

Campground	Agency	Location	Fee/Night	Amenities
	National Monument			Access Roads, Visitor Protection, Fee Collection
Wagon Wheel RV Park	Private	Within City Limits of Mackay, ID off Highway 93	\$45	Tent/RV Spaces, RV Hook-Ups, Picnic Tables, Fire Rings/Grills, Toilet Facilities, Trash Receptacles, Drinking Water, Access Roads, Visitor Protection, Fee Collection
Round Valley RV Park	Private	Within City Limits of Challis, ID off Highway 93	\$43	Tent/RV Spaces, RV Hook-Ups, Picnic Tables, Fire Rings/Grills, Toilet Facilities, Trash Receptacles, Drinking Water, Access Roads, Visitor Protection, Fee Collection

### Impacts of Fee Adjustment and Rationale

BLM manages public lands for the benefit of current and future generations, supporting conservation in the pursuit of a multiple use mission. Recreation sites provide community residents and regional visitors with an opportunity to explore and enjoy the public lands in East-Central Idaho. The goal of the CFO recreation site business plan is to financially support maintaining developed recreation facilities. The purpose of the BLM recreation fee program is not to maximize revenue but to help protect natural resources, provide for public health and safety, and facilitate access to public lands and waters. BLM Manual 2930 – Recreation Permits and Fees outline that fees should be balanced and affordable for all members of the public rather than an impediment. Recreation fees are also generally considered a way to ensure that those who actively use developed recreation sites make a reasonable contribution towards protecting and enhancing those opportunities. The projected revenue would help meet the anticipated annual operating costs associated with the recreation sites. Based on observed and quantified visitation use data and patterns, the expanded amenity fee sites are primarily frequented by local residents and regional visitors engaging in camping, boating, off-roading, fishing, and hunting activities. It is acknowledged that fee adjustment and introduction of new fees may impact these user groups. However, the revenue generated from these adjustments and new fees would be crucial in supporting essential infrastructure projects, including upgrading and repairing degrading facilities, enhanced accessibility, and ensuring long-term sustainability of the sites.

To keep up with rising management and maintenance costs, the CFO will lean on the average annual Western U.S. Consumer Price Index (CPI) to allow for a single CPI-based increase of up to 10% once the Western U.S. CPI increases by 20% from the base year (when fees are first charged). Any subsequent fee adjustments, regardless of CPI growth, must go through the public participation process, including BLM Idaho

Resource Advisory Council (RAC) engagement, if required. This ensures the proposal remains compliant with FLREA and consistent with BLM guidance.

The expanded amenity fee would allow CFO to improve recreation fee-based sites and would assist in implementing the BLM Recreation Strategy: Connecting with Communities (2018). The fees would help CFO to achieve social, economic, and environmental goals of the local community and provide more benefits for mutually shared customers. It would support the CFO goal of expanding and enhancing recreation experiences, volunteer opportunities, youth-based partnership programs, and resource and interpretation programs.

New and existing facilities represent a substantial public investment. Without fees visitors could expect to see a loss of functionality and use of these facilities as maintenance capacity will be reduced due to insufficient funding or staffing. As costs are expected to increase, maintenance might not happen as quickly or as often as needed and some services might be reduced. If fees are not charged the costs to operate and maintain the fee sites would continue to rely on fluctuating appropriated funding.

#### Prohibitions on Charging FLREA Fees

Section 803(d) of FLREA provides that standard or expanded amenity recreation fees shall not be charged (shortened list): solely for parking, undesignated parking, or picnicking along roads or trails, general access, low investment sites or areas, persons moving through without using the facilities or services, for camping at undeveloped sites that do not provide a minimum number of facilities or services (see Background and Authorities section), use of overlooks or scenic pullouts, any person engaged in the conduct of official Federal, State, Tribal, or local government business, special attention or extra services necessary to meet the needs of the disabled, any person under 16 years of age, and outings conducted for noncommercial educational purposes by schools or bona fide academic institutions. Fees will not be charged for any tribal members who have a right of access for hunting, fishing, and gathering privileges under the specific provision of law or treaty.

#### Fee Discounts

Section 805 of FLREA provided for the establishment of a single interagency national pass, known as the “America the Beautiful – the National Parks and Federal Recreational Lands Pass,” which provides the bearer full coverage of standard amenity fees and holders of the Interagency Senior and Access Passes a 50 percent discount on some expanded amenity fees. The national interagency Senior and Access Passes replaced the Golden Age and Access Passports in 2007. The BLM will continue to honor these passes and associated discounts at eligible sites. In addition, the BLM honors the Interagency Military Lifetime Pass and the Annual Military Pass, which provide free access to standard amenity recreation sites for eligible active-duty military, veterans,

and Gold Star Families. These passes do not provide discounts on expanded amenity fees unless otherwise noted by a site. No discount is allowed for expanded amenity group use sites, shelters, yurts or cabins.

### Public Outreach

The CFO targeted audience for public comments regarding the business plan were the following:

- Local and regional recreationists
- Special recreation permittees
- Custer County residents
- Local and County Governments
- Members of the public who have previously expressed interest in Idaho Falls District affairs

### Public Communication and Marketing Plan:

- Public notice of the proposed fee system, including fee details and calling for public comments, was posted at the recreation sites included in this business plan and at the CFO.
- An announcement detailing the fee proposal and calling for public comments was issued to all local newspapers and posted on BLM social media.
- The business plan was published on the BLM website <https://www.blm.gov/programs/recreation/permits-and-fees/business>
- A Notice of New Recreation Fee Collection, along with a call for public comments, will be published in the Federal Register, with implementation set 180 days thereafter.

The CFO presented the Challis Field Office Recreation Fee Sites fee proposal to the BLM Idaho Resource Advisory Council (RAC) for advice, feedback on August 19, 2025. FLREA mandates that the appropriate RAC be consulted and given the opportunity to provide recommendations to BLM for all recreation fee proposals prior to implementation. The RAC reviewed the CFO business plan and recommended approval to the BLM Idaho State Director. After incorporating public comments and RAC input, the final business plan for the CFO Recreation Fee Site increases will be implemented in the summer of 2026. The new fees at Deadman Hole, Little Boulder, and Morgan Creek Recreation Sites will be implemented 180 days following the publication of a *Federal Register* notice announcing the new fees.

The BLM received 18 public comments during the comment period for the Draft Business Plan. Twelve of the public comments were in support of adjusting and implementing fees, while six public comments were in opposition of adjusting and implementing fees. The general public was in support of fees that enhanced recreational opportunities and maintenance of the recreation sites. Those in opposition

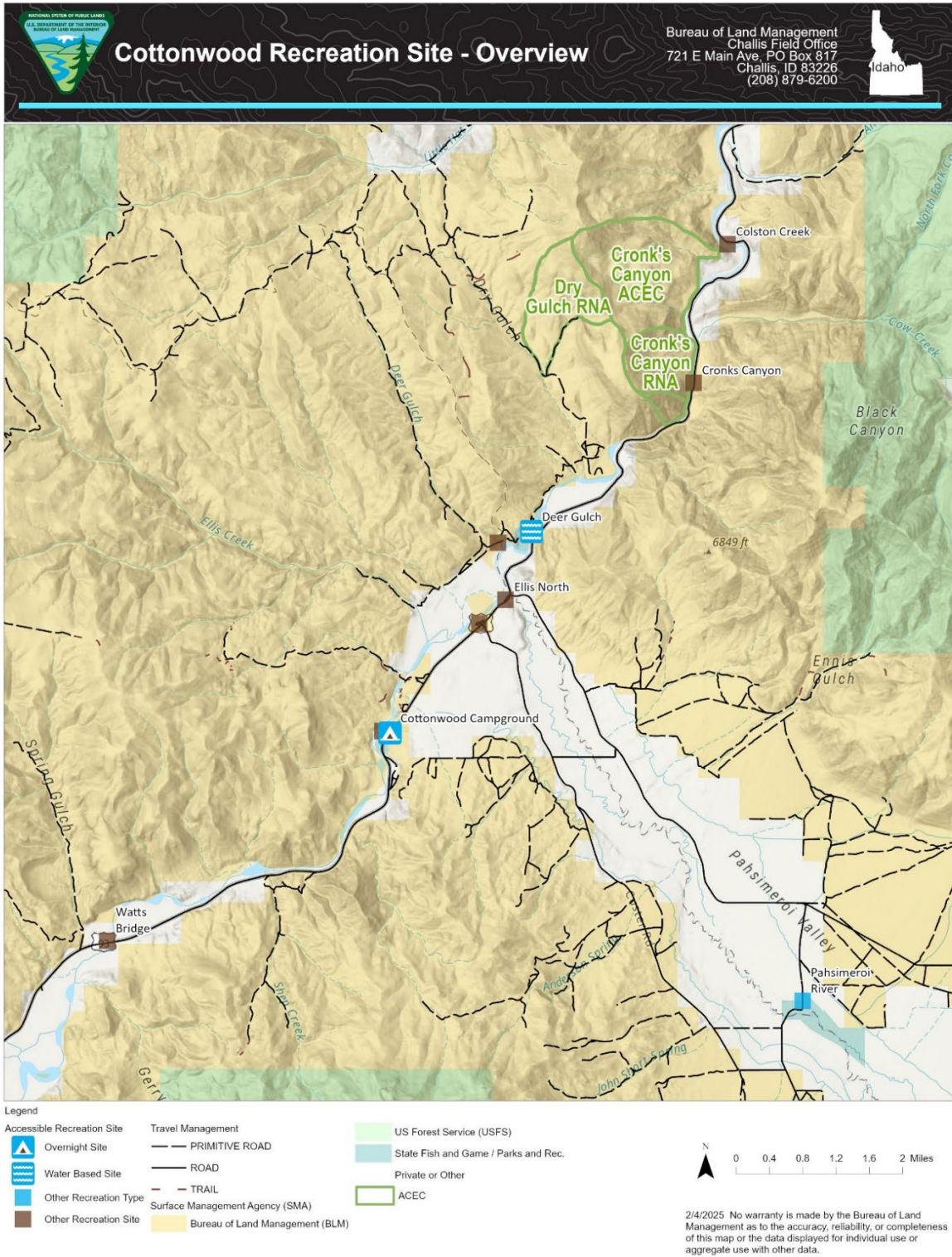
had concerns about fee rates and reservation systems diminishing accessibility of the recreation sites.



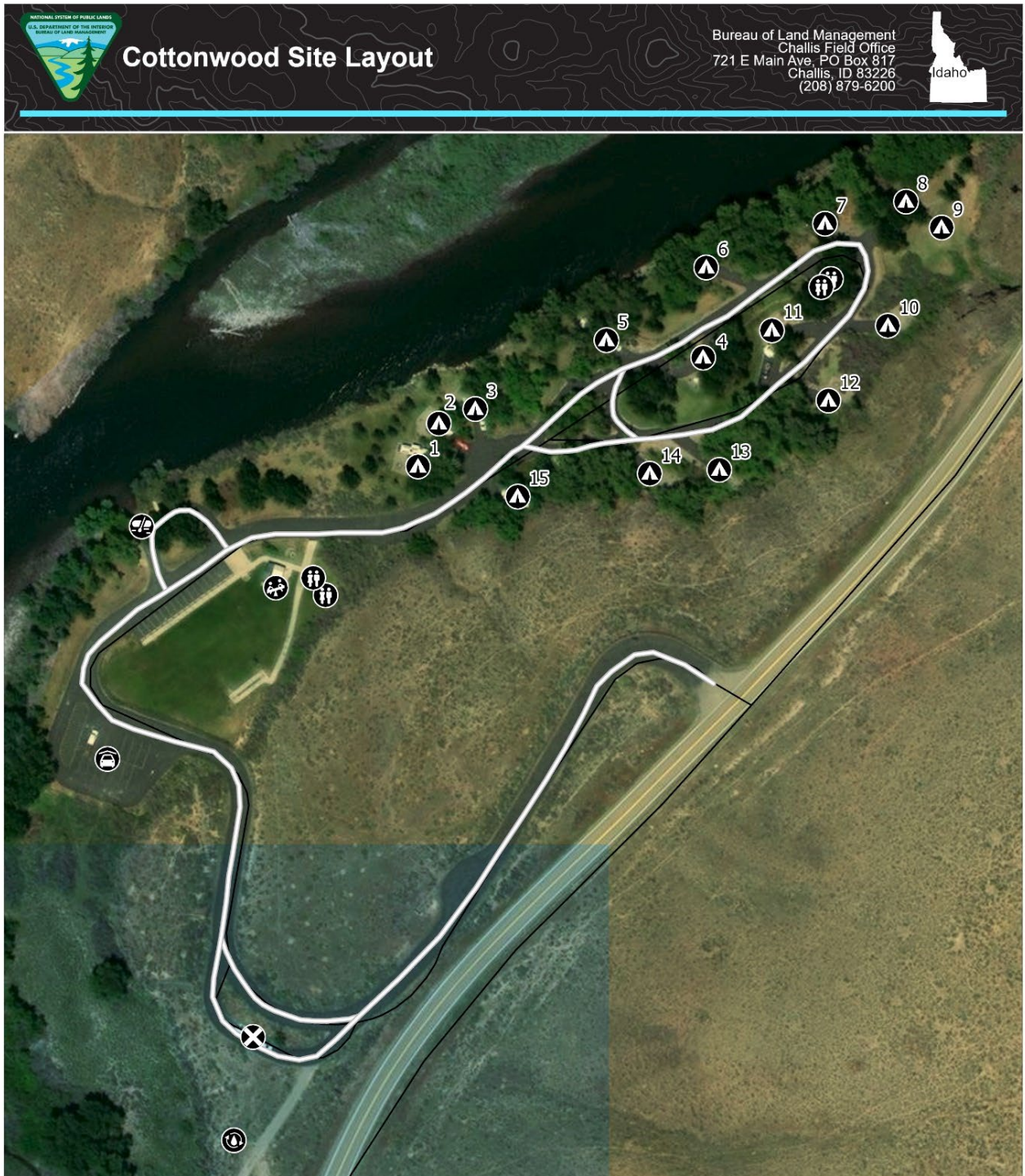
## Map 2. Bayhorse Recreation Site Layout



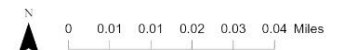
### Map 3. Cottonwood Recreation Site- Overview



# Map 4. Cottonwood Recreation Site Layout

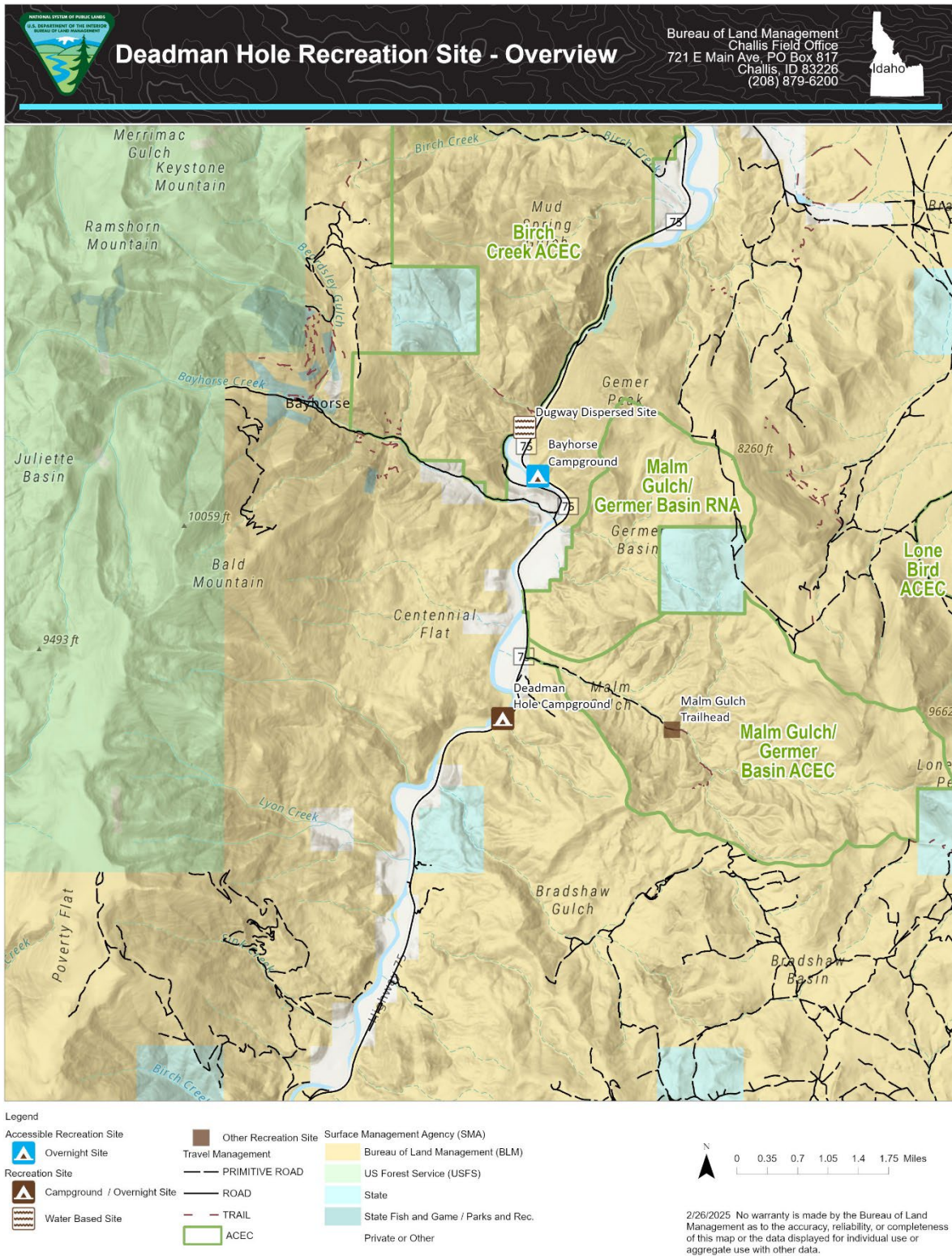


- Legend**
-  Campsites
  -  Boat Ramp
  -  Day-Use Area/Reservable Pavilion
  -  Dump Station
  -  Parking
  -  Pumphouse
  -  Restroom
  -  Access Road
  -  Travel Management
  -  ROAD
  -  Bureau of Land Management (BLM)
  -  State Fish and Game / Parks and Rec.



3/11/2025 No warranty is made by the Bureau of Land Management as to the accuracy, reliability, or completeness of this map or the data displayed for individual use or aggregate use with other data.

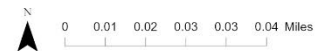
# Map 5. Deadman Hole Recreation Site Overview



# Map 6. Deadman Hole Recreation Site Layout

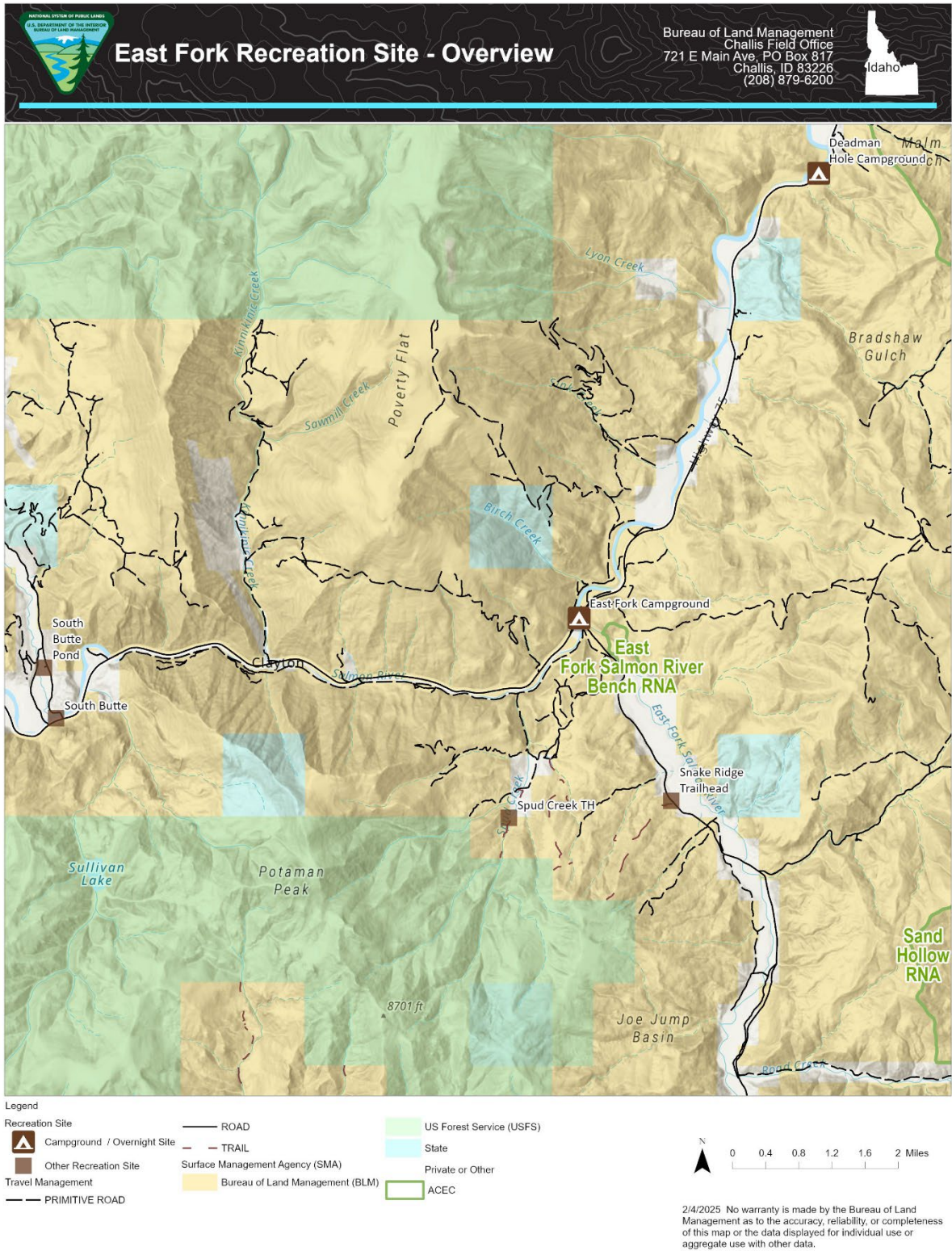


- Legend**
- Travel Management**  
 — ROAD  
 - - TRAIL  
 Surface Management Agency (SMA)  
 Bureau of Land Management (BLM)
- Type**
- Campsites
  - Boat Ramp
  - Drinking Water
  - Parking
  - Restroom
  - Access Road



3/10/2025 No warranty is made by the Bureau of Land Management as to the accuracy, reliability, or completeness of this map or the data displayed for individual use or aggregate use with other data.

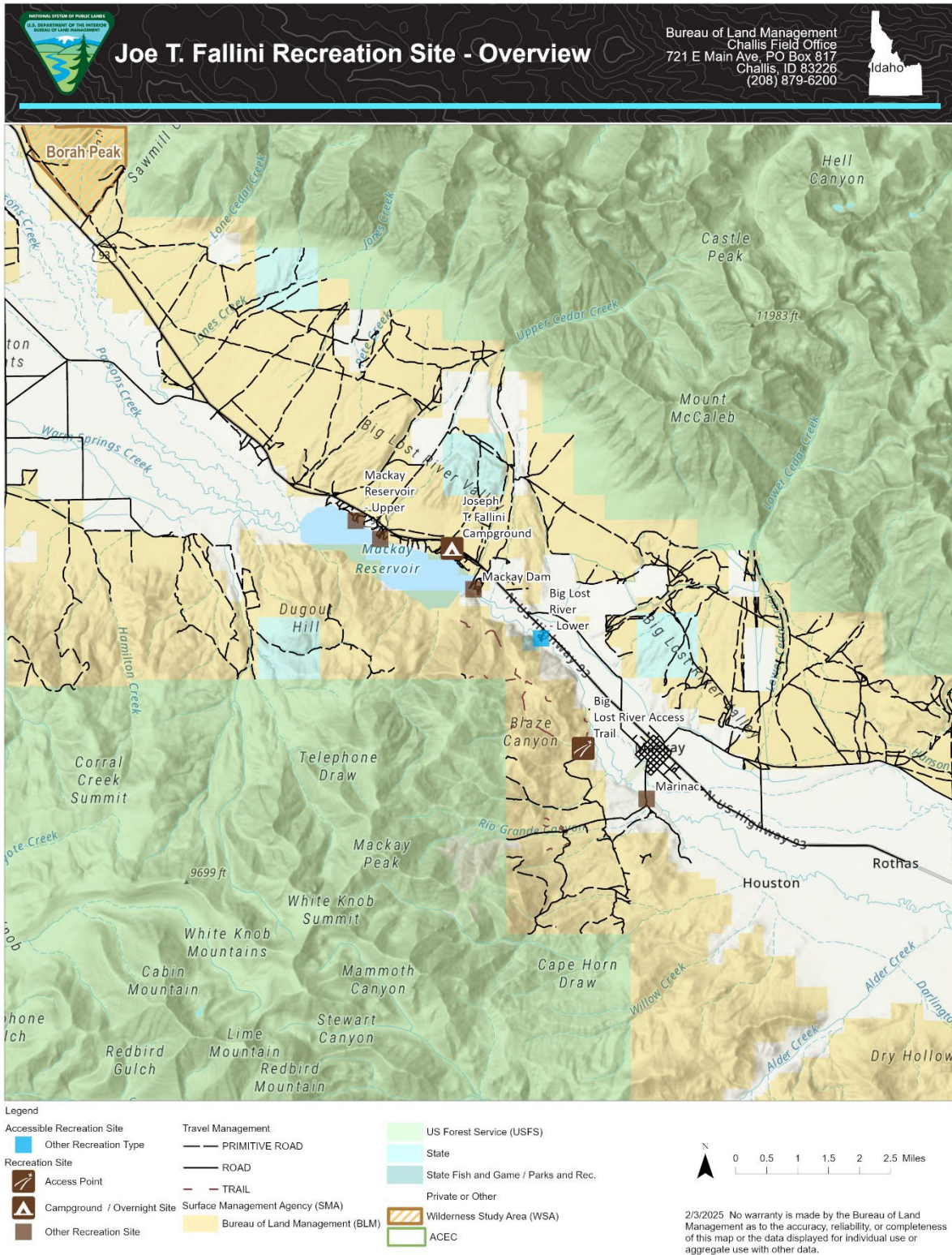
# Map 7. East Fork Recreation Site Overview



Map 8. East Fork Recreation Site Layout



# Map 9. Joe T. Fallini Recreation Site Overview




Map 10. Joe T. Fallini Recreation Site Layout






# Map 12. Little Boulder Recreation Site Layout



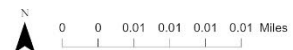
## Little Boulder Site Layout

Bureau of Land Management  
Challis Field Office  
721 E Main Ave, PO Box 817  
Challis, ID 83226  
(208) 879-6200






- Legend
- |                        |                |                                 |
|------------------------|----------------|---------------------------------|
| Campsites              | Hitching Posts | Access Road                     |
| Day-Use Area (Walk-In) | Parking        | Travel Management               |
| Drinking Water         | Restrooms      | ROAD                            |
|                        |                | Surface Management Agency (SMA) |
|                        |                | Bureau of Land Management (BLM) |




3/11/2025 No warranty is made by the Bureau of Land Management as to the accuracy, reliability, or completeness of this map or the data displayed for individual use or aggregate use with other data.

# Map 13. Little Boulder Recreation Site Conceptual Site Layout



## Little Boulder Conceptual Site Layout

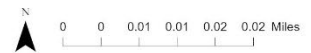
Bureau of Land Management  
 Challis Field Office  
 721 E Main Ave, PO Box 817  
 Challis, ID 83226  
 (208) 879-6200





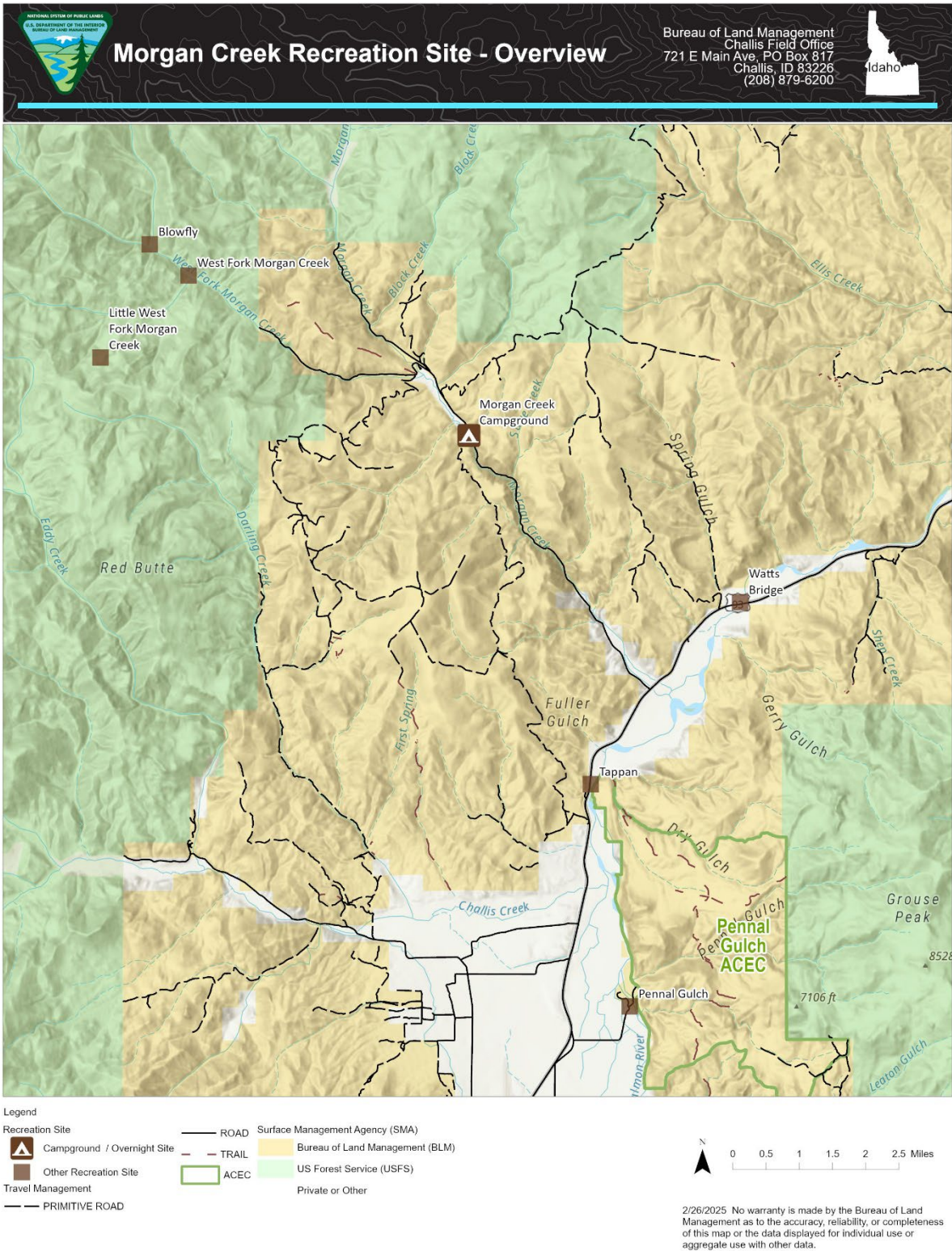
**Legend**

		<b>Travel Management</b>
<b>Type</b>		ROAD
		Surface Management Agency (SMA)
		Bureau of Land Management (BLM)
		Private or Other

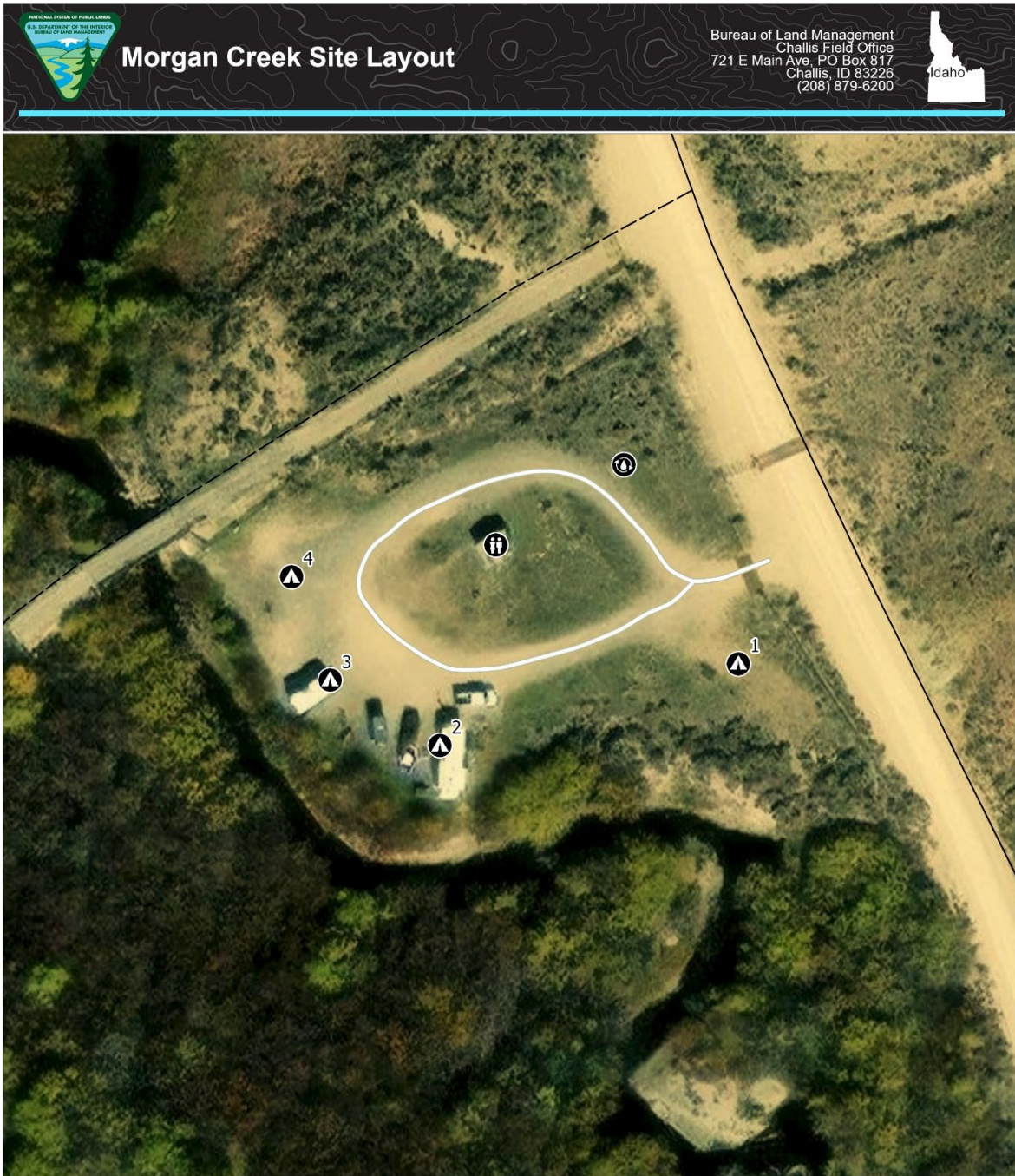


3/12/2025 No warranty is made by the Bureau of Land Management as to the accuracy, reliability, or completeness of this map or the data displayed for individual use or aggregate use with other data.

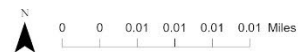
# Map 14. Morgan Creek Recreation Site Overview



# Map 15. Morgan Creek Recreation Site Layout



- Legend**
- Campsites
  - Restrooms
  - ROAD
  - Access Road
  - Surface Management Agency (SMA)
  - Drinking Water
  - Travel Management
  - Bureau of Land Management (BLM)
  - PRIMITIVE ROAD



3/10/2025 No warranty is made by the Bureau of Land Management as to the accuracy, reliability, or completeness of this map or the data displayed for individual use or aggregate use with other data.