

# 2026 Kremmling Field Office New Wildlife Seasonal Closure Maps

Closures are in effect April 15 through June 30.

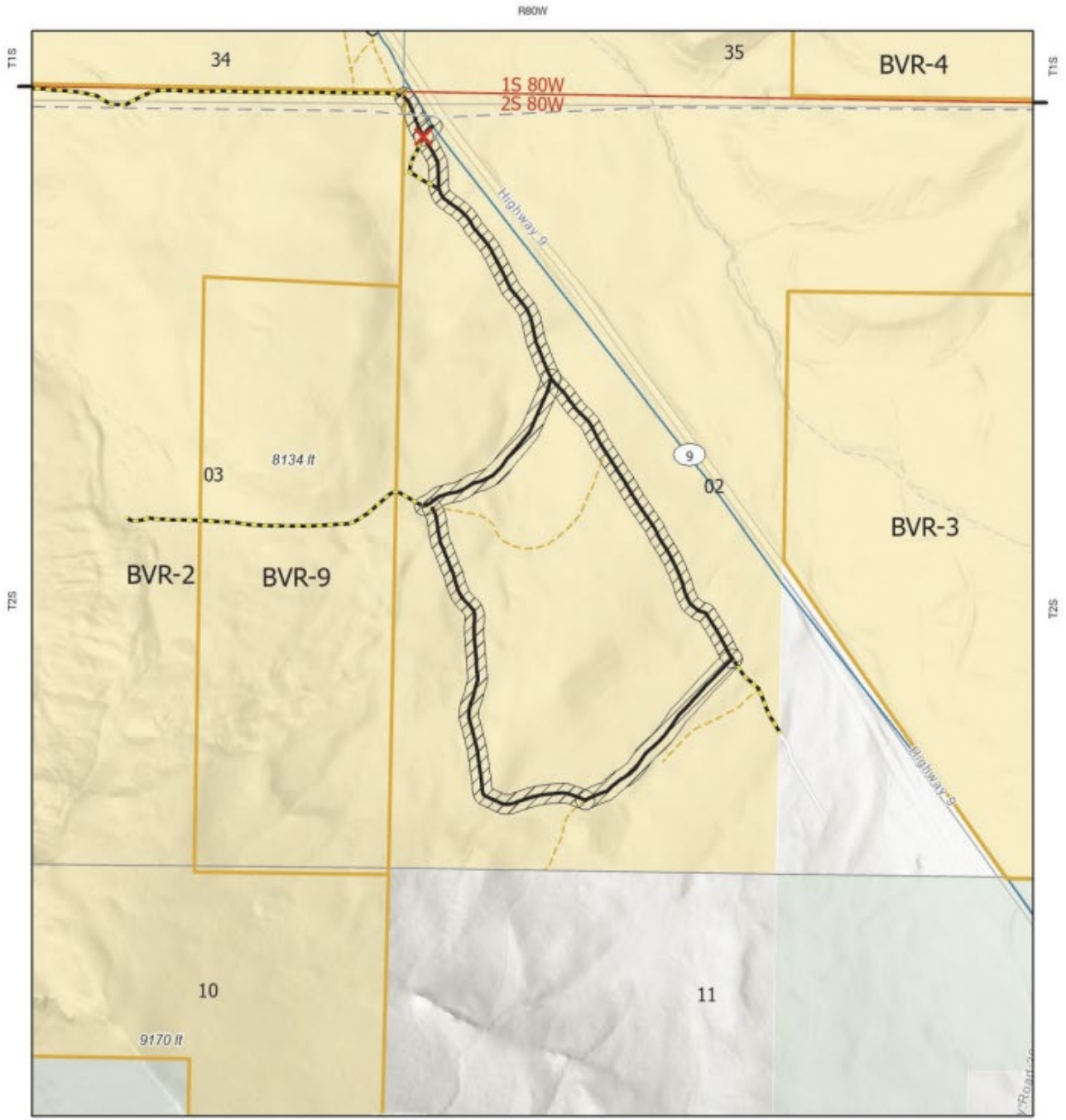


## Kremmling Field Office

Bureau of Land Management | Colorado | Northwest District

Bureau of Land Management  
Kremmling Field Office  
2103 Park Avenue  
Kremmling, CO 80459  
(970) 724-3000  
www.blm.gov





- County Boundaries
- Bureau of Land Management
- Private
- US Forest Service
- BVR 1 Administrative

- BVR 1 Open to Full-sized Vehicle
- Parcel Boundary
- Gate Closure Locations
- Closed to Motorized and Mechanized Use April 15 to June 30



No warranty is made by the Bureau of Land Management as to the accuracy, reliability, or completeness of this map or the data displayed for individual use or aggregate use with other data.



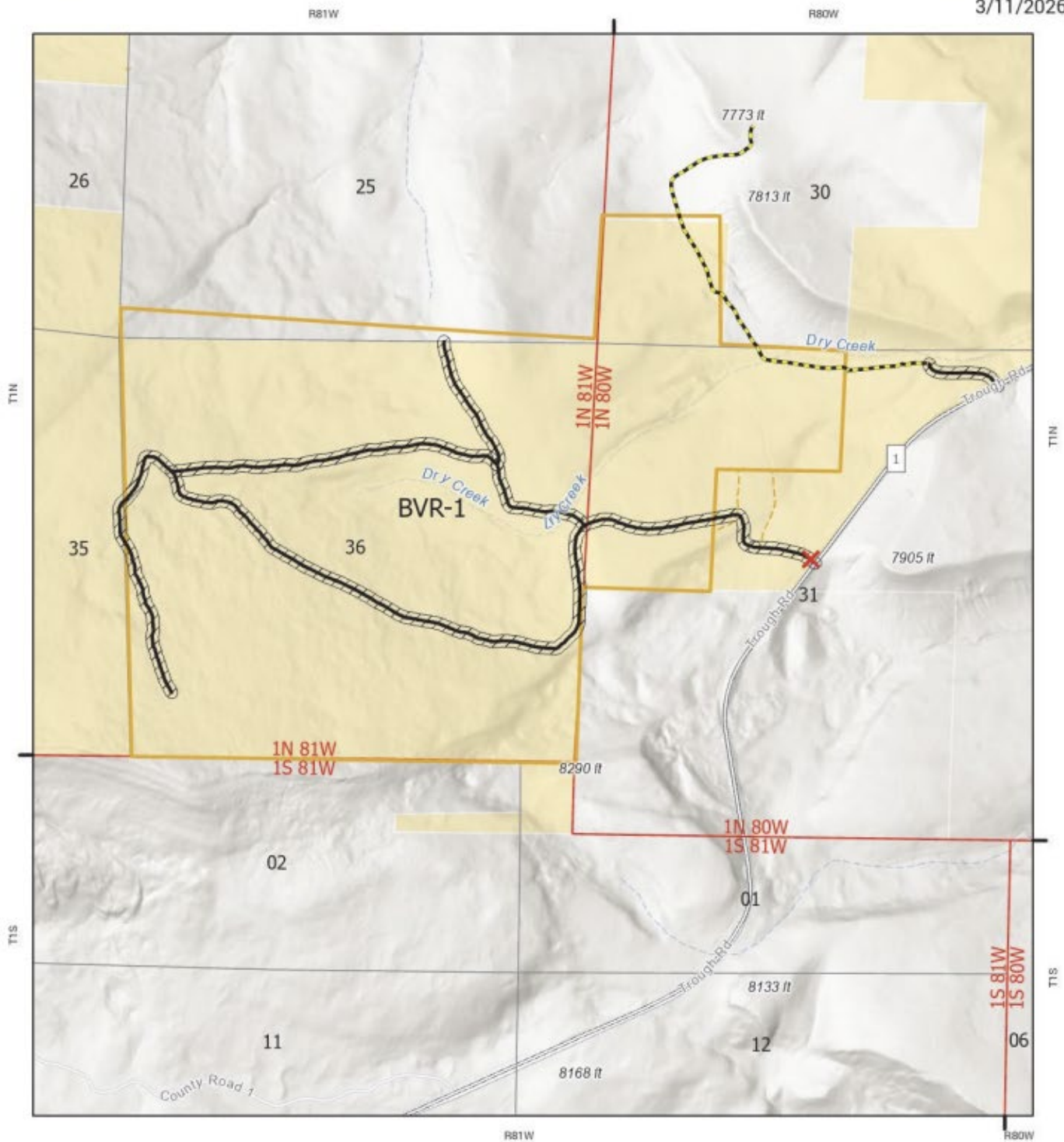
# Kremmling Field Office

Bureau of Land Management | Colorado | Northwest District

Bureau of Land Management  
Kremmling Field Office  
2103 Park Avenue  
Kremmling, CO 80459  
(970) 724-3000  
www.blm.gov



3/11/2026



- County Boundaries
- Bureau of Land Management Private
- BVR 1 Administrative

- BVR 1 Open to Full-sized Vehicle
- Parcel Boundary
- Gate Closure Locations
- Closed to Motorized and Mechanized Use April 15 to June 30



No warranty is made by the Bureau of Land Management as to the accuracy, reliability, or completeness of this map or the data displayed for individual use or aggregate use with other data.