

Welcome to the public lands administered by the Bureau of Land Management (BLM) in Wyoming. BLM manages approximately 18 million acres of public land in Wyoming, representing about 30 percent of the state. These lands are yours to enjoy and use for a variety of recreational opportunities.

Your visit to BLM lands in Wyoming will offer you a once in a lifetime experience. Whether you're exploring the high desert, hiking in the mountains or fishing in a freshwater stream, you'll experience the undeveloped landscapes of BLM public lands. Unless otherwise posted, all public lands are available for recreation use. However, please remember that there are other uses of these lands, such as livestock grazing, and mineral development, to name just a few.

This publication will give you a general idea of where recreation opportunities exist on public lands in Wyoming. Please note the location of the BLM offices throughout the state. BLM staff are happy to assist you while you are enjoying Wyoming's public lands.

For additional interpretive and informational BLM Wyoming resources, please visit our online public room at:

### BLM Wyoming Online Public Room



# Wyoming



## Recreation Guide & Map

## Tread Lightly

- T ravel Responsibly
- R espect the Rights of Others
- E ducate yourself
- A void Sensitive Areas
- D o Your Part



## Leave No Trace

We encourage visitors to adhere to the seven Leave No Trace principles on all BLM-administered public land.

- Plan Ahead and Prepare
- Travel and Camp on Durable Surfaces
- Dispose of Waste Properly
- Leave What You Find
- Minimize Campfire Impacts
- Respect Wildlife
- Be Considerate of Other Visitors



Each year millions of people visit America's wild-lands. Skilled users help maintain the primitive backcountry experience for all. Remember, Leave No Trace depends more on attitude than it does on rules.

## Public Access



Alkali Creek

BLM Wyoming-administered public lands are intermingled with private, state, and a variety of other federal agency jurisdiction.

A visitor may legally access public lands via:

- A public trail, road, or highway;
- A navigable water;
- From adjacent public or state lands that are legally accessible;
- Across adjacent private land with permission from the landowner.

BLM visitors are responsible for knowing their location and applicable regulations. Appropriate public land users remain on legal routes, obey all signs, respect private property, and avoid resource damage. In most circumstances, visitors are allowed to drive up to 300 feet off-route if no resource damage will occur and no ruts are created.

The best way to ensure a successful outing is to check with the nearest BLM office for up-to-date access information in your area. Your local BLM office can also supply you with recreation permits and information on specific recreation opportunities, such as camping, fishing, wildlife watching, hiking, off-highway vehicle travel and snowmobiling.

## OHVs



Trapper Canyon

Numerous opportunities for off-highway vehicle (OHV) recreation exist on BLM-managed public lands. Miles of routes and open areas await OHV enthusiasts. Please obey all signs regarding the management of public lands and routes.

All OHVs must comply with State of Wyoming regulations, permitting and restrictions. Learn more at [wyparks.wyo.gov/index.php/orv-trails](http://wyparks.wyo.gov/index.php/orv-trails)



## Dispersed Camping

Unless otherwise posted, most BLM Wyoming-administered public lands provide excellent opportunities for dispersed camping. However, make sure to follow these guidelines:

In general, a 14-day occupancy limit within a 28-day period applies across the state for any eligible camping location on BLM-administered land. The 14-day limit may be reached either through several separate visits or through 14 days of continuous occupation during the 28-day period. After the 14th day of occupation, campers must move outside of a 5-mile radius of the previous location.

In addition, no person shall leave personal property unattended on public lands for a period of more than 72 hours. Unattended personal property will be counted toward the 14-day camp limit.

Check with your local BLM office for special guidelines in your area. Learn more at [www.blm.gov/programs/recreation/camping](http://www.blm.gov/programs/recreation/camping).



# Wyoming Public Lands

McCullough Peaks Divide Trail



## Office Contacts



**Wyoming State Office**  
5353 Yellowstone Road  
Cheyenne, WY 82009  
307-775-6256

**High Desert District**  
250 Highway 191 North  
Rock Springs, WY 82901  
307-352-0202

**Kemmerer Field Office**  
430 Highway 109 North  
Kemmerer, WY 82301  
307-828-4500

**Pinedale Field Office**  
1625 West Pine Street  
Pinedale, WY 82941  
307-367-5300

**Rawlins Field Office**  
1300 North Third  
Rawlins, WY 82301  
307-328-4200

**Rock Springs Field Office**  
280 Highway 191 North  
Rock Springs, WY 82901  
307-352-0201

**High Plains District**  
2987 Prospector Drive  
Casper, WY 82504  
307-261-7600

**Buffalo Field Office**  
1425 Fort Street  
Buffalo, WY 82834  
307-684-1100

**Casper Field Office**  
2987 Prospector Drive  
Casper, WY 82504  
307-261-7600

**National Historic Trails Interpretive Center**  
1501 North Poplar Street  
Casper, WY 82501  
307-261-7700

**Newcastle Field Office**  
1101 Washington Blvd.  
Newcastle, WY 82701  
307-746-6600

### Wind River/Bighorn Basin District

101 South 23rd Street  
Worland, WY 82401  
307-332-4808

**Cody Field Office**  
1002 Blackburn Street  
Cody, WY 82414  
307-578-5900

**Lander Field Office**  
1335 Main Street  
Lander, WY 82520  
307-332-8400

**Worland Field Office**  
101 South 23rd Street  
Worland, WY 82401  
307-347-5100

## Boating & Fishing



Hogan Luce

BLM Wyoming-administered public lands provide access to boating and fishing on a variety of lakes, streams and rivers. In Wyoming, the edges and bottoms of bodies of water can be privately owned. In those places, don't walk or wade the shoreline to avoid inadvertent trespass.

Do your part to prevent the spread of invasive species, which have already disrupted many Wyoming ecosystems. Remove all visible mud, plants, fish and other organisms from your equipment. Eliminate all water from equipment before you depart an area, and avoid transferring wet equipment from stream to stream.

The Wyoming Game and Fish Department regulates fishing and boating licensing, permitting and inspection. You can find information on these topics, as well as places to fish and boat, fish stocking reports and additional aquatic invasive species information at [wgfd.wyo.gov/fishing-and-boating](http://wgfd.wyo.gov/fishing-and-boating).



## Hunting

The Wyoming Game and Fish Department (WGFD) administers hunting permits, hunt areas and shed hunting in the State of Wyoming. The BLM, in partnership with the State of Wyoming, is committed to facilitating access to public lands for hunting, fishing and other forms of recreation.

Please make sure to take the appropriate BLM 100K land status map(s) with you on any trip off the beaten track, as well as for navigation across BLM-administered roads. You can find which land status maps cover each WGFD hunt area at [wgfd.wyo.gov/HuntPlanner](http://wgfd.wyo.gov/HuntPlanner).

When you're planning your hunting excursion, remember that it's not always possible to retrieve downed game with a vehicle. Bring a non-motorized game cart, pack frame, capable friend or horse to help. Avoid hunting close to property lines, as animals may cross onto private property before they can be recovered.

More important than taking home a game animal is making sure you and your companions get home safely at the end of the day.

Make sure to:

- Tell a friend or family member where you are going and when you expect to be back.
- Be prepared for Wyoming's changing weather while out in the field.
- Exercise the utmost caution with knives while processing your animals and supervise young hunters while they are processing their animals.
- Treat every gun as if it's loaded.

If you suspect violations of land use regulations, please do not risk escalating the situation by personally contacting the violator. A safer way to resolve the situation is to write down the license plate information, if possible, and contact appropriate law enforcement. The BLM offers a \$250 reward for information leading to the conviction of any person damaging public lands through any criminal activity in the state of Wyoming.



## Shooting

Target shooting is generally allowed on BLM-administered public lands, as long as it is done in a safe manner and without damaging natural or cultural resources or improvements on public lands. Discharging or using firearms, weapons, or fireworks is not allowed in developed recreation sites, including parking lots, unless they are specifically designated for that purpose. Check with your local BLM office for any additional restrictions on shooting.

Please follow this guidance during your recreational shooting experience:

- Never shoot from or over any road or highway.
- Always use a safe backdrop.
- Do not use plastic pellets, tracer rounds, exploding rounds, or steel-core rounds.
- Do not attach targets to plants or place targets against rocks, plants, or solid objects. It is illegal to deface or destroy trees, signs, outbuildings, or other objects on federal lands.
- All targets, shell casings, debris and trash must be removed.

Please note, during fire season some areas may be closed to target shooting. Check the BLM Wyoming fire restrictions web page for more information (see the Fire Safety section of this document for a link).

Learn more about safety tips and rules for target shooting on BLM-administered public land at [www.blm.gov/programs/recreation/recreation-programs/recreational-shooting](http://www.blm.gov/programs/recreation/recreation-programs/recreational-shooting)



## Fire Safety

Fire season in Wyoming typically lasts from June to October, but wildfires can occur at any time. Don't be responsible for initiating a wildfire incident—you will be subject to fines and responsible for suppression costs.

Follow these tips to help avoid starting wildfires:

- Check for local fire restrictions.
- Clear away grass, leaves and other debris within a 10-foot perimeter of any campfire.
- Ensure all campfires and grills are completely extinguished before leaving the area.
- Tow safely—dragging chains will throw sparks.

Year-round fire restrictions on BLM Wyoming administered public land include:

- Use/discharge of explosives of any kind, incendiary or chemical devices, pyrotechnic devices or exploding targets.
- Discharge or use of any fireworks.
- Discharge of a firearm using incendiary or tracer ammunition.
- Burn, ignite or cause to burn any tire, wire, magnesium, or any other hazardous or explosive material.
- Operate any off-road vehicle on public lands unless the vehicle is equipped with a properly installed spark arrester pursuant to 43 CFR 8343.1 (c).

Temporary fire restrictions can be found at [www.blm.gov/wyoming-fire-restrictions](http://www.blm.gov/wyoming-fire-restrictions).



## Collecting

This section addresses rockhounding, gold panning, fossil collecting, and artifacts. Other types of collection may occur on BLM-administered lands, including forest products. Contact your local BLM office for information on these and other resources, or visit [www.blm.gov](http://www.blm.gov).

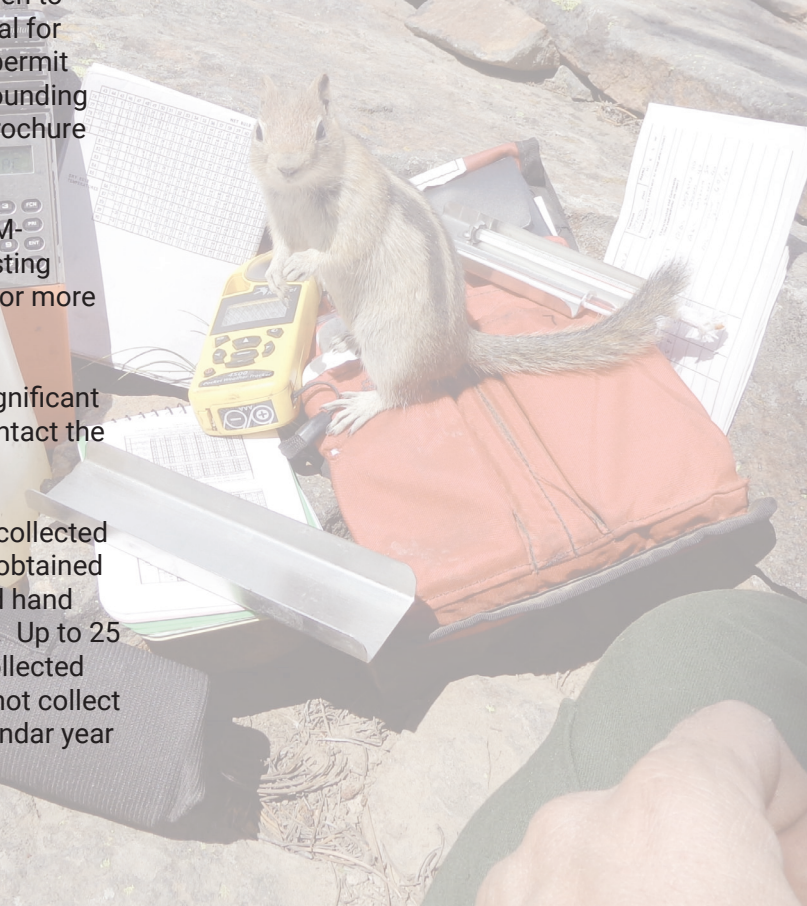
The collection of artifacts (including arrowheads) is prohibited. Artifacts on public land are for observation only – not for removal as personal souvenirs. Help us ensure that artifacts remain available to the public for research, education and interpretation by leaving what you find.

BLM Wyoming-administered public lands are open to the collection of limited amounts of rock material for personal (noncommercial) purposes without a permit or charge. Learn more about permissible rockhounding activities in our BLM Wyoming Rockhounding brochure found on our online public room webpage.

Gold panning for personal use is allowed on BLM-administered lands outside the boundary of existing mining claims. Contact the nearest BLM office for more information.

The collection of vertebrate fossils and other significant paleontological resources requires a permit. Contact the Wyoming State Office for more information.

Common invertebrate and plant fossils may be collected in reasonable quantities for personal use when obtained via surface collection or the use of non-powered hand tools resulting in negligible surface disturbance. Up to 25 lbs. of petrified wood, plus one piece, may be collected for personal use per day, but an individual may not collect more than 250 lbs. of petrified wood in one calendar year without a permit.



## National Conservation Lands

The BLM's National Conservation Lands encompass some of the nation's most spectacular historic and wild landscapes. Nationwide, National Conservation Lands units include National Monuments, National Conservation Areas, Wild & Scenic Rivers, Wilderness Areas, Wilderness Study Areas, and National Scenic and Historic Trails.

In Wyoming, the BLM manages sections of the Continental Divide National Scenic Trail (CDT), five National Historic Trails, the National Historic Trails Interpretive Center and 42 Wilderness Study Areas. These resources offer exceptional opportunities for solitude, exploration, research, recreation and education.

### Continental Divide National Scenic Trail

The 3,100-mile long CDT runs from Canada to Mexico through the states of Montana, Idaho, Wyoming, Colorado, and New Mexico. Crossing the spine of the North American continent numerous times, it traverses some of America's most spectacular and isolated scenery.

In Wyoming, the BLM manages about 180 miles of CDT corridor. These portions are 95 percent primitive two-track, four percent improved roads and one percent requires cross-country travel. Cross-country segments are closed to motorized vehicles.



### National Historic Trails

The BLM manages sections of congressionally-designated National Historic Trails and other significant historic trails in Wyoming. In addition to the landscape, the physical remains of historic travelers are well represented. Trail ruts, graves, inscription sites and stage stations await visitors to public lands in Wyoming.

We interpret these resources further at the National Historic Trails Interpretive Center in Casper, as well as in our "Historic Trails Wyoming" map and poster series, available online at our public room webpage.

### Wilderness Study Areas

The 42 Wilderness Study Areas that BLM manages through the states of Montana, Idaho, Wyoming, Colorado, and New Mexico. These areas may feature special qualities such as ecological, geological, educational, cultural, historic, scientific and scenic values. Relatively untouched by human hands, these areas represent some of the finest treasured landscapes available to the public in Wyoming. Learn more at [www.blm.gov/wyoming/ncl](http://www.blm.gov/wyoming/ncl).

## Back Country Byways

The BLM administers three back country byways in the state of Wyoming: Red Gulch/Alkali, South Bighorn/Red Wall, and Seminoe to Alcova. These routes provide opportunities for scenic exploration, solitude, and diverse travel modes—from stretches of paved road suitable for passenger vehicles to sections of rough, rocky terrain that are only passable by high clearance, four-wheel drive vehicles. Consult the nearest BLM office for descriptions of the travel conditions you may encounter.

### Red Gulch/Alkali

A 36-mile scenic drive on improved gravel and dirt roads through the foothills of the Bighorn Mountains, where visitors will encounter hoodoos and steep rugged canyons. Provides overland hiking/backpacking access to the Alkali Creek, Medicine Lodge and Trapper Creek Wilderness Study Areas.

### South Bighorn/Red Wall

A 33-mile gravel road tracing old livestock trails through open range and the scenic Red Wall rock formations. Provides access to numerous outdoor recreational activities such as hiking and camping.

### Seminoe to Alcova

A 64-mile route that includes a variety of travel conditions. Visitors will pass through pronghorn-grazed prairie, stark desert and the Seminoe Mountains. Provides access to reservoirs, sand dunes and a blue ribbon-trout fishery on the North Platte River.

Learn more about the BLM's back country byway system at [www.blm.gov/programs/recreation/recreation-programs/byways](http://www.blm.gov/programs/recreation/recreation-programs/byways).



## Developed Campgrounds

Field Office	Campground Name	#of Sites*	Vault Toilet	Water	Fee
<b>Buffalo</b>	<b>25</b> Outlaw Cave	12	Yes	No	N/A
<b>Casper</b>	<b>42</b> Buffalobery	4	Yes	No	\$/Night
	Chalk Bluffs	11	Yes	No	\$/Night
	Golden Currant	4	Yes	No	\$/Night
	Buffalo Creek	4	Yes	No	N/A
	Grave Springs	12	Yes	No	N/A
	<b>41</b> Lodgepole	15	Yes	Yes	\$/Night
	Rim	8	Yes	No	\$/Night
	<b>44</b> Pete's Draw	7	Yes	No	\$/Night
<b>Cody</b>	<b>9</b> Cottonwood Creek	6	Yes	No	N/A
	Five Springs Falls	19	Yes	Yes	\$/Night
	<b>1</b> Hogan Luce	5	Yes	No	N/A
<b>Kemmerer</b>	<b>72</b> BOR Fontanelle Creek	56	Yes	Yes	\$/Night
	<b>73</b> BOR Slate Creek	13	Yes	No	N/A
	BOR Tailrace	3	Yes	No	N/A
	BOR Weeping Rock	8	Yes	No	N/A
	<b>64</b> Pine Creek	7	Yes	No	N/A
<b>Lander</b>	<b>66</b> Atlantic City	18	Yes	Yes	\$/Night
	Big Atlantic Gulch	10	Yes	Yes	\$/Night
	<b>48</b> Cottonwood	18	Yes	Yes	\$/Night
<b>Pinedale</b>	<b>68</b> Boulder Lake	5	Yes	No	N/A
	Scab Creek Large, Small Vehicle	7 (L), 12 (S)	No, Yes	No, Yes	N/A, N/A
	<b>59</b> New Fork River	3	Yes	No	N/A
	<b>60</b> Warren Bridge	15	Yes	Yes	\$/Night
<b>Rawlins</b>	<b>10c</b> Bennett Peak	11	Yes	Yes	\$/Night
	Corral Creek	6	Yes	Yes	\$/Night
	<b>94</b> Dugway	5	Yes	Yes	N/A
	<b>10c</b> Encampment River	8	Yes	Yes	\$/Night
	Prior Flat	12	Yes	No	N/A
	<b>91</b> Teton Reservoir	5	Yes	No	N/A
<b>Rock Springs</b>	<b>62</b> Blucher Creek	7	Yes	No	N/A
	<b>77</b> Killpecker Sand Dunes	12	Yes	No	N/A
	<b>63</b> Sweetwater Bridge	12	Yes	No	N/A
	Sweetwater Guard Station	11	Yes	No	N/A
<b>Worland</b>	<b>17</b> Castle Gardens	4	Yes	No	N/A
	Middle Fork of the Powder River	3	Yes	Yes	N/A

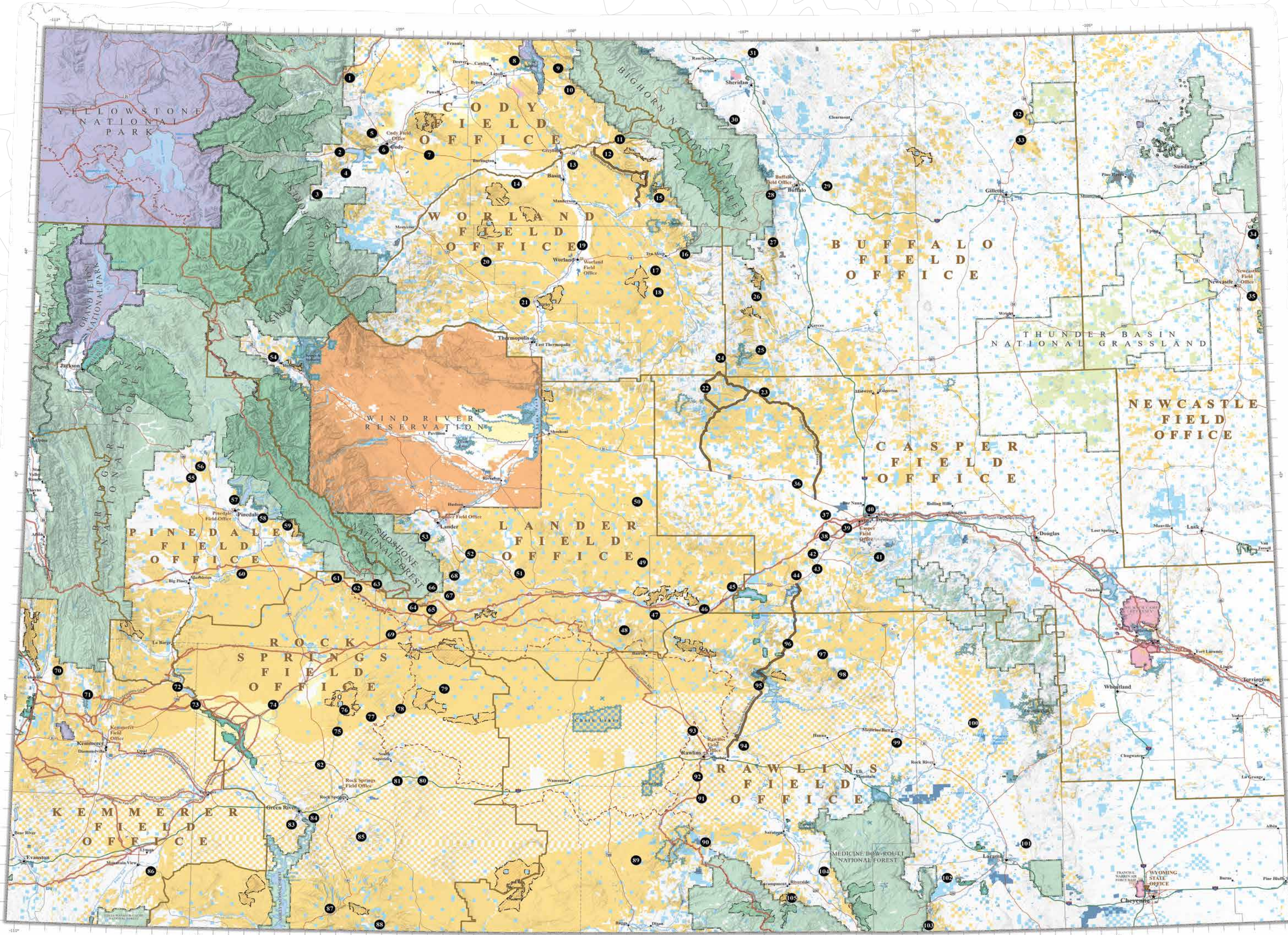
\*All BLM Wyoming developed campsites are first-come, first-served. No campground may be occupied by an individual party for more than 14 days in a 28 day period. Campground fees and amenities are subject to change.



# Wyoming Recreation Guide

For current information regarding BLM Recreation Sites, including site accessibility, amenities, and directions, please go to [blm.gov/visit](http://blm.gov/visit). Recreation sites are searchable by name as shown in the legend below, or by state and activity.

No warranty is made by the Bureau of Land Management as to the accuracy, reliability, or completeness of these data for individual or aggregate use with other data. Original data were compiled from various sources and may be updated without notification.  
Please inquire with the local BLM Field Office for current information regarding recreation site accessibility, fees, and amenities.



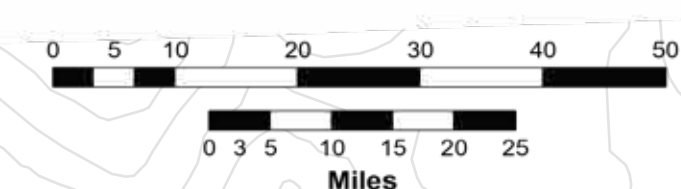
## Map Symbols

- BLM Boundaries**
  - Field Office Boundaries
  - BLM Administrative Unit Office Points
  - Office Type
  - Field
- State/County/Municipal**
  - State
  - County Boundary
  - Cities
  - State Capital
  - County Seat
  - City/Town
- WY Roads and Trails**
  - Interstates - WY
  - US Highway - WY
  - State Highway - WY
  - National Scenic and Historic Trails
  - Wyoming Scenic Backways
  - Continental Divide
- Natural Features**
  - Waterbodies
  - Lakes, Ponds, Reservoirs, and Estuaries
  - Wetland
  - Rivers
  - Intermittent
  - Perennial
- State Designations**
  - WY State Parks
  - WGFD Wildlife Habitat Management Area
  - WGFD Public Access Area
- Federal Designated Wilderness**
  - BLM Wilderness Study Area
  - NPS Wilderness
  - USFS Wilderness
  - USFWS Wilderness
- Federal Administrative Designations**
  - NPS Units
  - USFS Units
  - USFWS Units
  - Wind River Indian Reservation
  - Military Reservations
- WY Surface Management Agency**
  - Federal
    - Bureau of Land Management
    - Bureau of Reclamation
    - Corps of Engineers
    - Department of Defense
    - Fish & Wildlife Service
    - Forest Service
    - National Park Service
    - Wind River Indian Reservation
    - National Grasslands
    - Other Federal
  - State
    - State Special Designations (State Parks & Hist Sites, University of Wyoming, Wyoming Game & Fish)
  - Local/Private
    - Local Government
    - Private

## Recreation Symbols

- BLM Recreation Site Location
- ADA Accessible
- Auto Touring
- Boat Ramp
- Camping
- Cross-Country Skiing
- Environmental Education
- Fishing
- Fossil Site
- Hiking
- Historic Site
- Horseback Riding
- Wildlife Viewing
- Interpretive Exhibit or Panel
- Interpretive Trail
- Motorized Boating
- Mountain Biking
- Non-Motorized Boating
- Off-Highway Vehicle Riding
- Petroglyphs
- Picnicking
- Public Restroom
- Rock Climbing
- Rock Hounding
- Scenic Geology
- Scenic Overlook
- Snowmobiling
- Visitor Center
- Wild Horse Viewing

**Map Projection:**  
Wylam (Lambert Conformal Conic Projection)  
Based on standard parallels 41°N and 45°N  
**Datum:**  
North American Datum 1983 (NAD83)



## BLM Recreation Sites and Opportunities

- |  |  |  |  |   |   |
|--|--|--|--|---|---|
| 1 Clarks Fork of the Yellowstone             | 10 Five Springs Falls Campground           | 23 Hole-in-the-Wall  | 32 CCC Ponds Recreation Area                   | 60 Pine Creek Camping Area                          | 96 Dome Rock                                  |
| 2 Hogan & Luce Campground                    | 11 Shell Creek Recreation Area             | 24 Middle Fork Powder River Campground                     | 33 Boulder Lake Recreation Area                | 70 Viva Naughton Trailhead                          | 97 Prior Flat Campground                      |
| 3 Four Bear Trailhead                        | 12 Horse Creek Recreation Area             | 25 Middle Fork Recreation Area and Outflow Cave Campground | 34 Scab Creek Recreation Area                  | 71 Fontenelle Creek Recreation Area                 | 98 First Ranch Creek                          |
| 4 North Fork Shoshone River                  | 13 Red Gulch Dinosaur Tracksite            | 26 Gardner Mountain Trailhead                              | 35 New Fork River Campground                   | 72 Slate Creek Campground                           | 99 East Allen Lake                            |
| 5 Sheep Mountain Trailhead                   | 14 Basin Gardens                           | 27 Poison Creek Trailhead                                  | 36 Dutch Joe Camp Area                         | 73 Tallrace and Weeping Rock Campgrounds            | 100 Wheatland Reservoir #3                    |
| 6 Bobcat-Houlihan Recreation Area            | 15 Wardell-Harrington Reservoirs           | 28 Mosier Gulch Day Use Area                               | 37 Blucher Creek Campground                    | 74 Pilot Butte Interpretive Site                    | 101 Little Mountain Camping Area              |
| 7 Twin Creek Trailhead                       | 16 Lone Tree Trailhead and Paint Rock      | 29 Dry Creek Petrified Tree Environmental Education Area   | 38 Beaver Rim                                  | 75 White Mountain Petroglyphs                       | 102 Pine Mountain Camp Area                   |
| 8 Andy Martin Hill                           | 17 Canyon Creek Trailhead                  | 30 Red Grade Trails  | 39 Castle Gardens Petroglyphs                  | 76 Boar's Tusk                                      | 103 Deep Gulch Trailhead                      |
| 9 Cody Canal Day Use Area                    | 18 Salt Lick Trailhead                     | 31 Welch Ranch Recreation Area                             | 40 Muddy Mountain Environmental Education Area | 77 Miner's Delight                                  | 104 Hydrology Road Trailhead                  |
| 10 Castle Rock River Access                  | 19 Castle Gardens Scenic Area              | 32 Weston Hills Recreation Area                            | 41 Chalk Bluffs Campground                     | 61 Sweetwater Bridge and Guard Station Campgrounds  | 105 Continental Divide Campground             |
| 11 Outlaw Trails Recreation Area             | 20 Big Cedar Ridge Fossil Area             | 33 Burnt Hollow Recreation Area                            | 42 Golden Currant Campground                   | 62 Pine Creek Campsite                              | 106 Lake Hattie Reservoir                     |
| 12 Beck Lake Trail System                    | 21 Duck Swamp Environmental Education Area | 34 Mallo Trailhead   | 43 Whitetail Day Use Area                      | 63 Atlantic City and Big Atlantic Gulch Campgrounds | 107 Twin Buttes Reservoir Area                |
| 13 McCullough Peaks                          | 22 Gooseberry Badlands Trail               | 35 Gebo-Crosby Historic Mining District                    | 44 Miles Landing Day Use Area                  | 64 Beaver Creek Nordic Ski Area                     | 108 Laramie River                             |
| 14 Eagle Pass Interpretive Site              | 23 Big Cedar Ridge Fossil Area             | 36 Red Grade Trails  | 45 Pete's Draw Campground                      | 65 Red Canyon Overlook                              | 109 Bennett Creek Campground                  |
| 15 Darnell Hills Open OHV Area               | 24 Duck Swamp Environmental Education Area | 37 Mallo Trailhead   | 46 The Redds Day Use Area                      | 66 South Pass Interpretive Site                     | 110 Corral Creek Campground                   |
| 16 Cottonwood Creek Campground and Trailhead | 25 Little Mountain                         | 38 Geodeney Recreation Area                                | 47 Steamboat Lake Interpretive Site            | 67 Warren Bridge Campground                         | 111 Encampment River Campground and Trailhead |
| 17 Little Mountain                           | 26 Five Springs Falls Campground           | 39 Rainbow Canyon Interpretive Site                        | 48 Hole-in-the-Wall                            | 68 Whiskey Mountain                                 | 112 Indian Bathubs Trailhead                  |
|  | 27 Shell Creek Recreation Area             | 40 Red Gulch Dinosaur Tracksite                            | 49 Middle Fork Powder River Campground         | 69 National Bighorn Sheep Interpretive Center       |   |
|  | 28 Horse Creek Recreation Area             | 41 Basin Gardens   | 50 Gardner Mountain Trailhead                  | 70 Poison Creek Trailhead                           |   |
|  | 29 Wardell-Harrington Reservoirs           | 42 Lone Tree Trailhead and Paint Rock                      | 51 Canyon Creek Trailhead                      | 71 Salt Lick Trailhead                              |   |
|  | 30 Castle Gardens Scenic Area              | 43 Big Cedar Ridge Fossil Area                             | 52 Duck Swamp Environmental Education Area     | 72 Gooseberry Badlands Trail                        |   |
|  | 31 Lone Tree Trailhead and Paint Rock      | 44 Duck Swamp Environmental Education Area                 | 73 Mallo Trailhead                             | 74 Gebo-Crosby Historic Mining District             |   |
|  | 32 Canyon Creek Trailhead                  | 75 Big Cedar Ridge Fossil Area                             | 76 Mallo Trailhead                             | 77 Gebo-Crosby Historic Mining District             |   |
|  | 33 Salt Lick Trailhead                     | 77 Mallo Trailhead   | 78 Mallo Trailhead                             | 79 Mallo Trailhead                                  |   |
|  | 34 Castle Gardens Scenic Area              | 78 Mallo Trailhead   | 79 Mallo Trailhead                             | 80 Mallo Trailhead                                  |   |
|  | 35 Big Cedar Ridge Fossil Area             | 79 Mallo Trailhead   | 80 Mallo Trailhead                             | 81 Mallo Trailhead                                  |   |
|  | 36 Duck Swamp Environmental Education Area | 80 Mallo Trailhead   | 81 Mallo Trailhead                             | 82 Mallo Trailhead                                  |   |
|  | 37 Mallo Trailhead                         | 81 Mallo Trailhead   | 82 Mallo Trailhead                             | 83 Mallo Trailhead                                  |   |
|  | 38 Mallo Trailhead                         | 82 Mallo Trailhead   | 83 Mallo Trailhead                             | 84 Mallo Trailhead                                  |   |
|  | 39 Mallo Trailhead                         | 83 Mallo Trailhead   | 84 Mallo Trailhead                             | 85 Mallo Trailhead                                  |   |
|  | 40 Mallo Trailhead                         | 84 Mallo Trailhead   | 85 Mallo Trailhead                             | 86 Mallo Trailhead                                  |   |
|  | 41 Mallo Trailhead                         | 85 Mallo Trailhead   | 86 Mallo Trailhead                             | 87 Mallo Trailhead                                  |   |
|  | 42 Mallo Trailhead                         | 86 Mallo Trailhead   | 87 Mallo Trailhead                             | 88 Mallo Trailhead                                  |   |
|  | 43 Mallo Trailhead                         | 87 Mallo Trailhead   | 88 Mallo Trailhead                             | 89 Mallo Trailhead                                  |   |
|  | 44 Mallo Trailhead                         | 88 Mallo Trailhead   | 89 Mallo Trailhead                             | 90 Mallo Trailhead                                  |   |
|  | 45 Mallo Trailhead                         | 89 Mallo Trailhead   | 90 Mallo Trailhead                             | 91 Mallo Trailhead                                  |   |
|  |  | 90 Mallo Trailhead   | 91 Mallo Trailhead                             | 92 Mallo Trailhead                                  |   |
|  |  | 91 Mallo Trailhead   | 92 Mallo Trailhead                             | 93 Mallo Trailhead                                  |   |
|  |  | 92 Mallo Trailhead   | 93 Mallo Trailhead                             | 94 Mallo Trailhead                                  |   |
|  |  | 93 Mallo Trailhead   | 94 Mallo Trailhead                             | 95 Mallo Trailhead                                  |   |
|  |  | 94 Mallo Trailhead   | 95 Mallo Trailhead                             | 96 Mallo Trailhead                                  |   |
|  |  | 95 Mallo Trailhead   | 96 Mallo Trailhead                             | 97 Mallo Trailhead                                  |   |
|  |  | 96 Mallo Trailhead   | 97 Mallo Trailhead                             | 98 Mallo Trailhead                                  |   |
|  |  | 97 Mallo Trailhead   | 98 Mallo Trailhead                             | 99 Mallo Trailhead                                  |   |
|  |  | 98 Mallo Trailhead   | 99 Mallo Trailhead                             | 100 Mallo Trailhead                                 |   |
|  |  | 99 Mallo Trailhead   | 100 Mallo Trailhead                            | 101 Mallo Trailhead                                 |   |
|  |  | 100 Mallo Trailhead  | 101 Mallo Trailhead                            | 102 Mallo Trailhead                                 |   |
|  |  | 101 Mallo Trailhead  | 102 Mallo Trailhead                            | 103 Mallo Trailhead                                 |   |
|  |  | 102 Mallo Trailhead  | 103 Mallo Trailhead                            | 104 Mallo Trailhead                                 |   |
|  |  | 103 Mallo Trailhead  | 104 Mallo Trailhead                            | 105 Mallo Trailhead                                 |   |
|  |  | 104 Mallo Trailhead  | 105 Mallo Trailhead                            | 106 Mallo Trailhead                                 |   |
|  |  | 105 Mallo Trailhead  | 106 Mallo Trailhead                            | 107 Mallo Trailhead                                 |   |
|  |  | 106 Mallo Trailhead  | 107 Mallo Trailhead                            | 108 Mallo Trailhead                                 |   |
|  |  | 107 Mallo Trailhead  | 108 Mallo Trailhead                            | 109 Mallo Trailhead                                 |   |
|  |  | 108 Mallo Trailhead  | 109 Mallo Trailhead                            | 110 Mallo Trailhead                                 |   |
|  |  | 109 Mallo Trailhead  | 110 Mallo Trailhead                            | 111 Mallo Trailhead                                 |   |
|  |  | 110 Mallo Trailhead  | 111 Mallo Trailhead                            | 112 Mallo Trailhead                                 |   |