



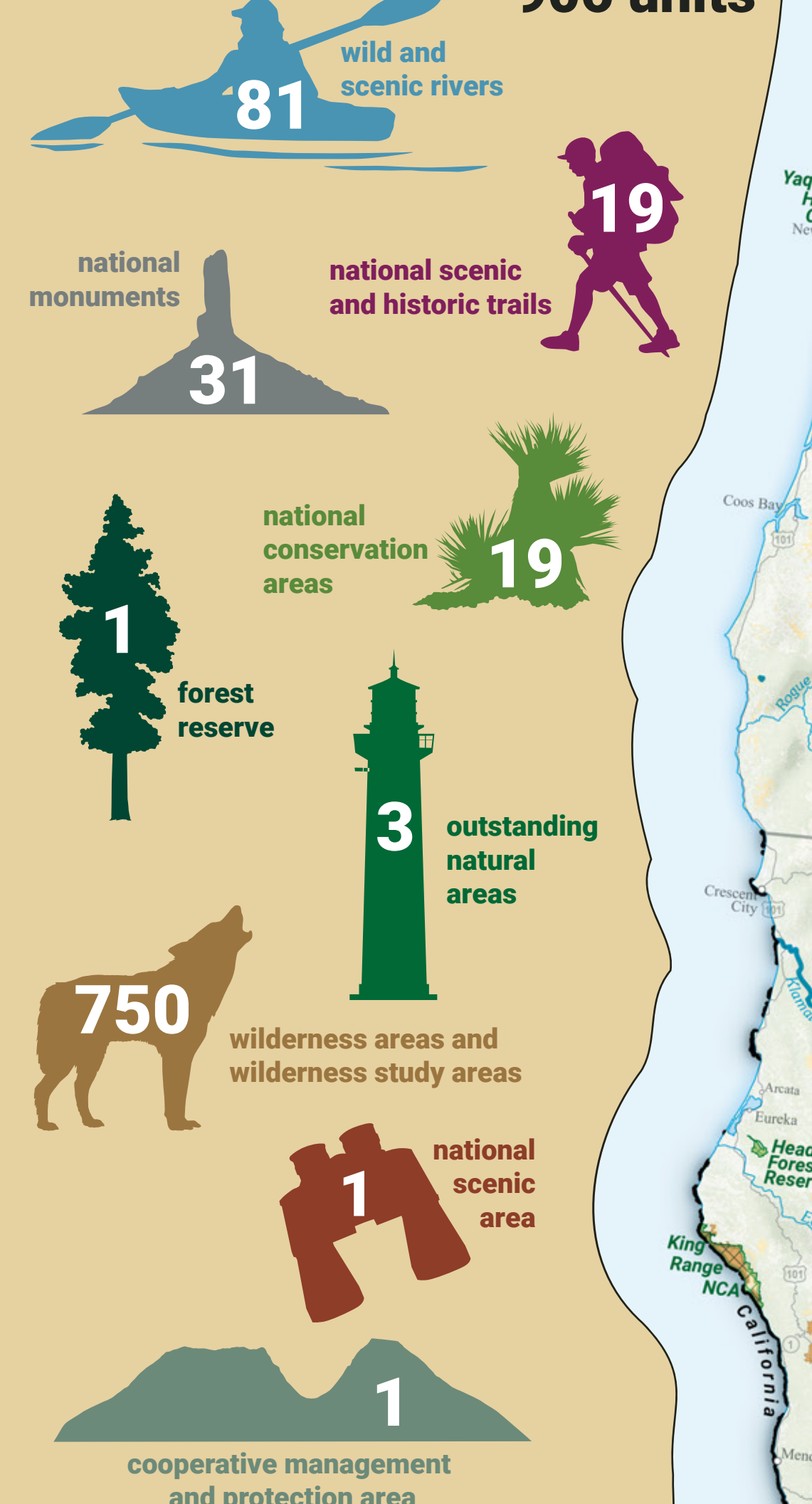
# 25TH ANNIVERSARY

## NATIONAL CONSERVATION LANDS

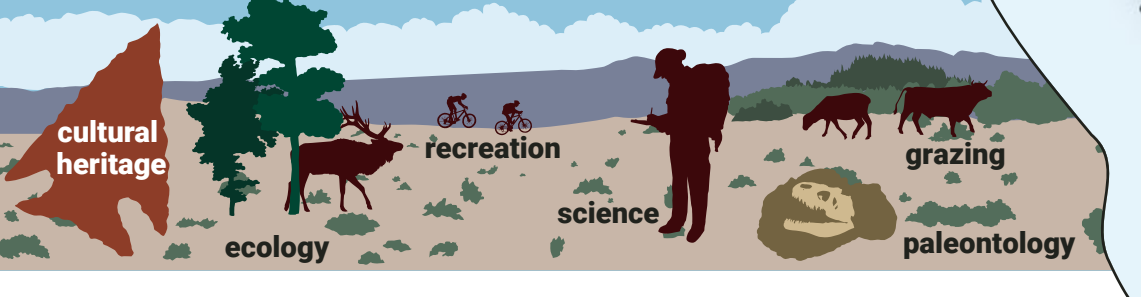
The National Landscape Conservation System, also referred to as BLM's National Conservation Lands, was established by Congress to conserve, protect, and restore nationally significant landscapes that have outstanding cultural, ecological, and scientific values.

National Conservation Lands are designated by Congress or the President.

**38 million acres**  
**906 units**



These places are recognized for a diverse array of outstanding values and multiple uses.



They offer exceptional opportunities for recreation and solitude.

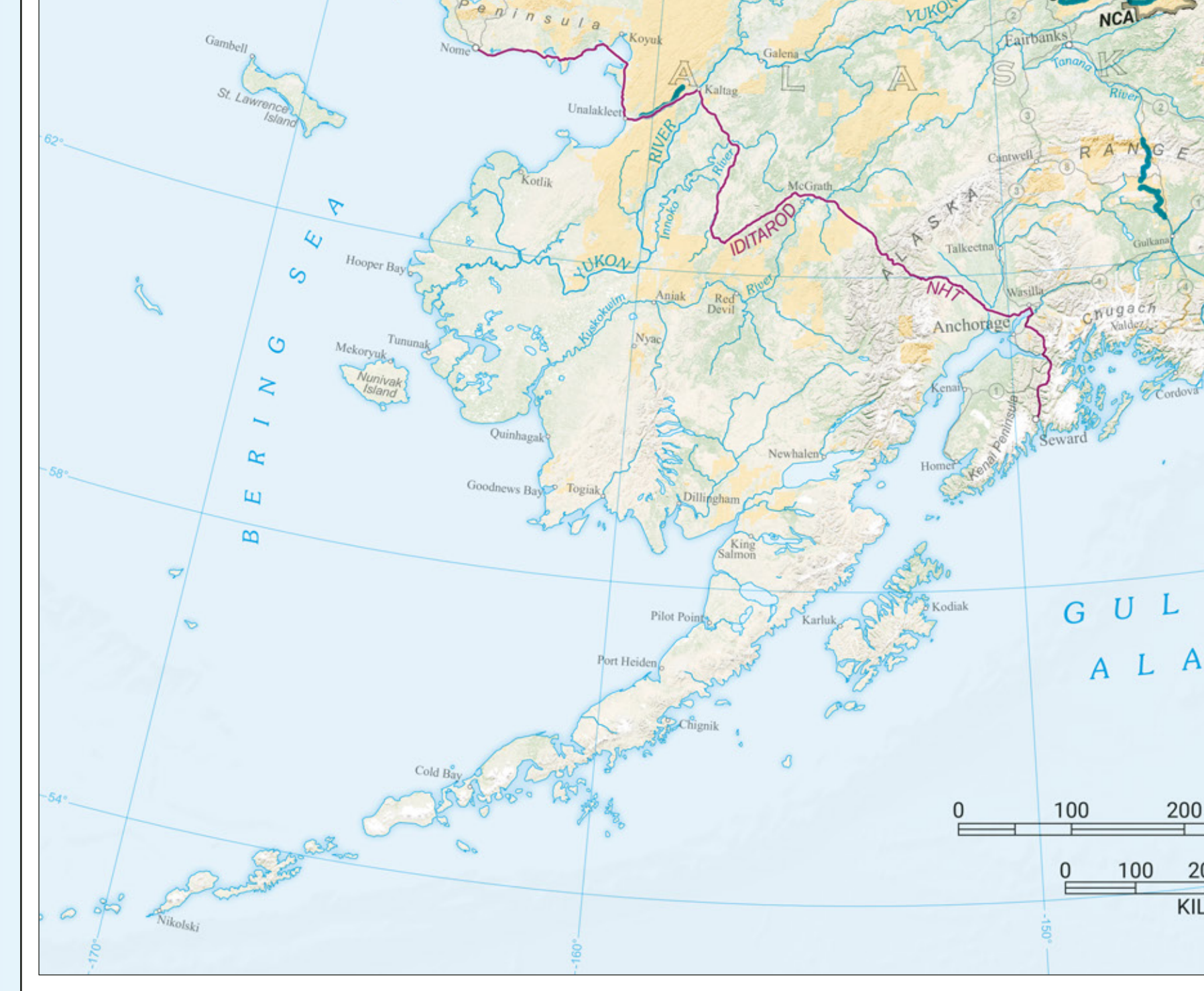
10.6 million visitors yearly



National Conservation Lands are managed for the benefit of current and future generations, supporting local communities and inspiring public land stewardship in countless ways.



BLM public lands ... 245 million acres of possibilities [www.blm.gov/nlcs](http://www.blm.gov/nlcs)



**NLCS Designations**

- National Wild and Scenic Rivers
- National Scenic and Historic Trails
- Wilderness
- Wilderness Study Area
- National Monument
- National Conservation Area or Similar Designation
- National Conservation Lands of the California Desert
- Bureau of Land Management

**Transportation**

- Interstate Freeway
- U.S. Highway
- State Highway

**List of Acronyms**

CMPPA: Cooperative Management and Protection Area

NCA: National Conservation Area

NHT: National Historic Trail

NST: National Scenic Trail

ONA: Outstanding Natural Area

No warranty is made by the Bureau of Land Management as to the accuracy, reliability, or completeness of this map or the data displayed for individual use or aggregate use with other data. M25-05-03  
This map was created on September 24th, 2025.

For More Information Visit:  
[www.blm.gov/nlcs](http://www.blm.gov/nlcs)