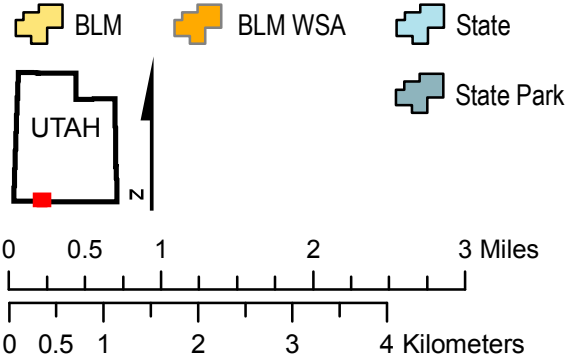
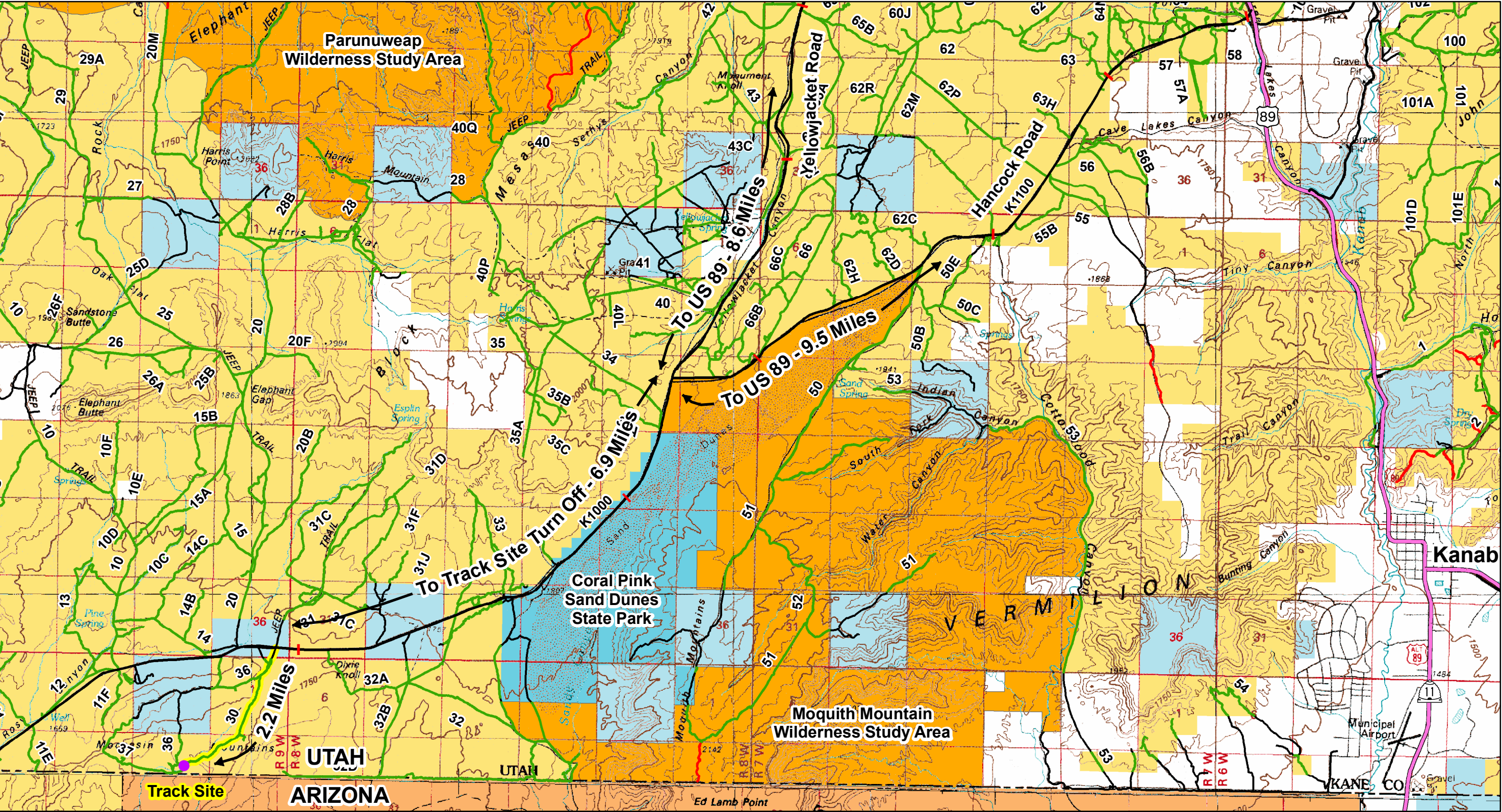


Moccasin Mountain Dinosaur Track Site

April 2011



CAUTION: Most routes in the Kanab FO require Four Wheel Drive (4 WD) and High Clearance due to deep sand, mud and exposed rock!!! Park in the sandy wash outside of the protective fencing at the track site. Two Wheel Drive (2 WD) vehicles should park at the turn off from Yellowjacket Road safely off the pavement. Mileage values on the map are approximate.

Transportation

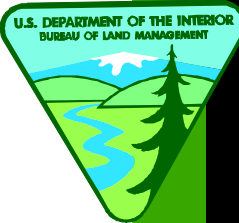
- US and State Highway
- Class 3 Primary Road
- Kanab FO Open Route
- Dirt Route to Track Site: Like most Kanab FO routes, requires High Clearance 4 Wheel Drive
- Closed by RMP
- Non-BLM Route

Projection: Transverse Mercator
Coordinate System: UTM
Datum: North American Datum of 1983 (NAD 83)

No warranty is made by the BLM for use of the data for purposes not intended by the BLM.

This product may not meet BLM standards for accuracy and content. Different data sources and input scales may cause some misalignment of data layers.

\\utkn\projects\PhysioSolis\Tracksite\plots\MoccasinMtnTracksiteMap_Tabloid_20110426.pdf



KANAB FIELD OFFICE

BLM