



NORTHWEST DISTRICT FIRE AND AVIATION

NEWS RELEASE

Bureau of Land Management – Colorado

Northwest District Fire and Aviation

Media Contact: Heather S. Marsh, hmarsh@blm.gov, 970-852-9272

Dec. 12, 2025

BLM plans prescribed pile burns in Douglas Mountain and Juniper Mountain areas

CRAIG, Colo. – Fire managers with the Bureau of Land Management Little Snake Field Office plan to conduct prescribed pile burns in the Douglas Mountain and Juniper Mountain areas. Fire personnel may start operations as early as January and continue through March, depending on weather and fuel conditions.

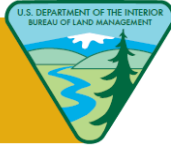
“We will only initiate the prescribed fire if conditions are ideal for a safe and effective burn as well as for good smoke dispersal away from local communities,” said **Doug Berg, Northwest District Fire Management Unit, Fire Management Specialist.**

Smoke may be visible during and after the burns as piles continue to smolder. Fire personnel may be visible in the area for several days following ignition to monitor and manage the pile burns.

Planned burn locations include:

- **Petersen/Holland Draw Phase II** – Approximately 12 acres of hand piles created in 2022 on BLM-managed lands, located about 65 miles west of Craig in the Douglas Mountain area.
- **Petersen/Holland Draw Phase III** – Approximately 108 acres of hand piles created in 2024 in the same general area as above.
- **Juniper Mountain** – Approximately 5 acres of remaining hand piles located about 25 miles west of Craig and 5 miles southeast of Maybell.

These prescribed burns are part of ongoing efforts to reduce wildfire risk and improve rangeland habitat for wildlife, including deer, elk, and sage grouse. Burning will only occur when sufficient snow accumulation is present to ensure safe and effective operations.



NORTHWEST DISTRICT FIRE AND AVIATION

Smoke and Public Safety

Smoke may be visible from the communities of Greystone, and along Highways 318 and 40. Though most smoke is expected to dissipate during the day, some may settle in valley bottoms overnight. Any lingering smoke is expected to be short-term. The public is reminded **not to call 911** to report smoke from these planned burns.

Prescribed fire smoke may affect your health. For more information, visit the [“Wood smoke and your health” webpage](#) on the Colorado Air Pollution Control Division website.

Regulatory Compliance

BLM conducts all prescribed burns in accordance with the Interagency Prescribed Fire Planning and Implementation Procedures Guide, the State of Colorado Smoke Management Plan, and a Memorandum of Understanding with the Colorado Department of Public Health and Environment. The CDPHE’s Air Pollution Control Division will issue an open burn permit outlining smoke dispersal requirements and other conditions.

Maps and Additional Information

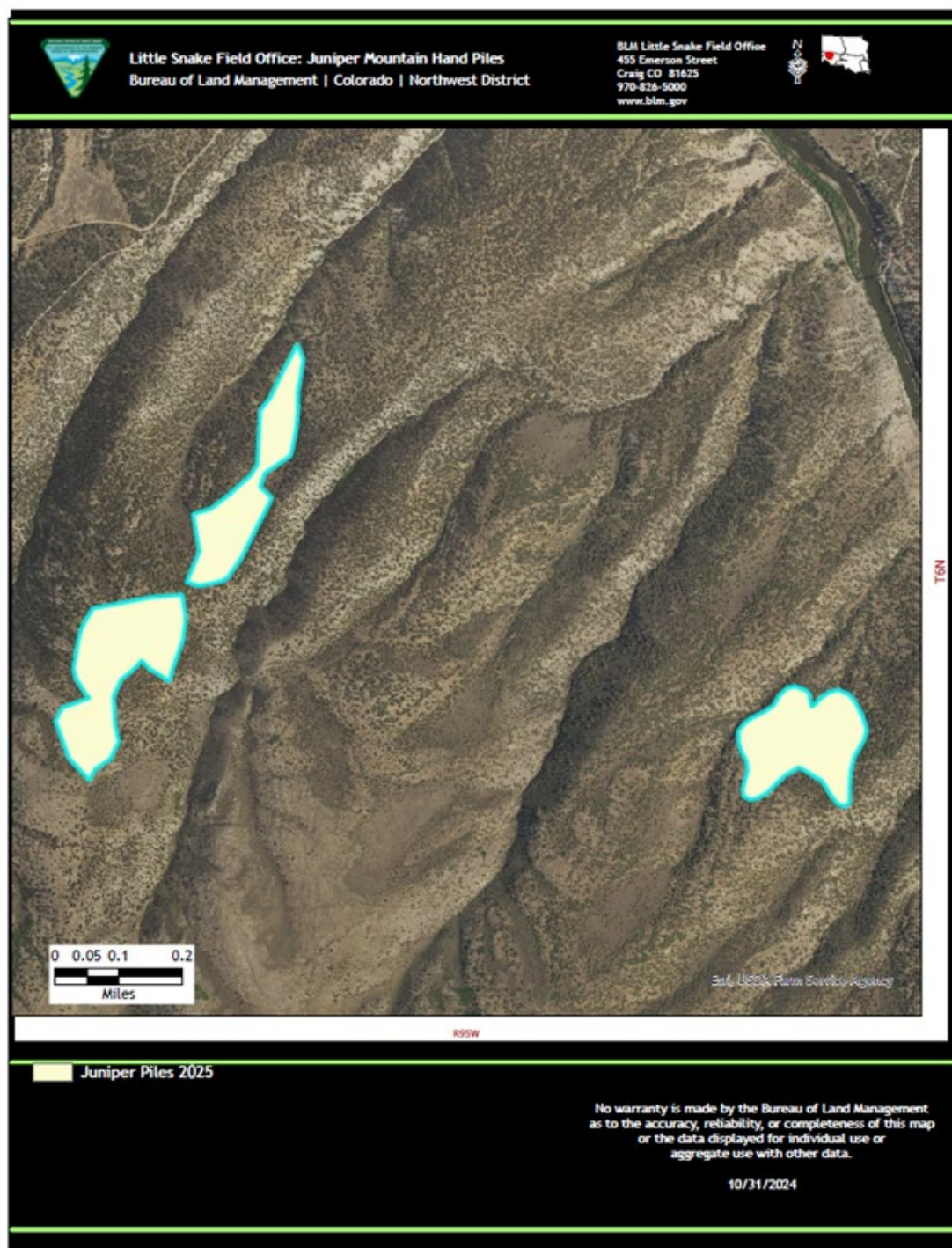
Maps of the Petersen/Holland and Juniper Mountain pile burn locations are attached with this release. For more information, visit the [BLM Colorado Fire Information webpage](#) or contact Berg at 720-987-3697 or gberg@blm.gov.

-NW DFA-

The BLM manages about 245 million acres of public land located primarily in 12 western states, including Alaska, on behalf of the American people. The BLM also administers 700 million acres of sub-surface mineral estate throughout the nation. Our mission is to sustain the health, diversity, and productivity of America’s public lands for the use and enjoyment of present and future generations.



NORTHWEST DISTRICT FIRE AND AVIATION





NORTHWEST DISTRICT FIRE AND AVIATION




Little Snake Field Office: Douglas Mountain Hand Piles
Bureau of Land Management | Colorado | Northwest District

BLM Little Snake Field Office
455 Emerson Street
Craig CO 81625
970-826-5000
www.blm.gov



R101W

T7N

 Peterson Holland Phase two

No warranty is made by the Bureau of Land Management as to the accuracy, reliability, or completeness of this map or the data displayed for individual use or aggregate use with other data.

10/31/2024



NORTHWEST DISTRICT FIRE AND AVIATION

