



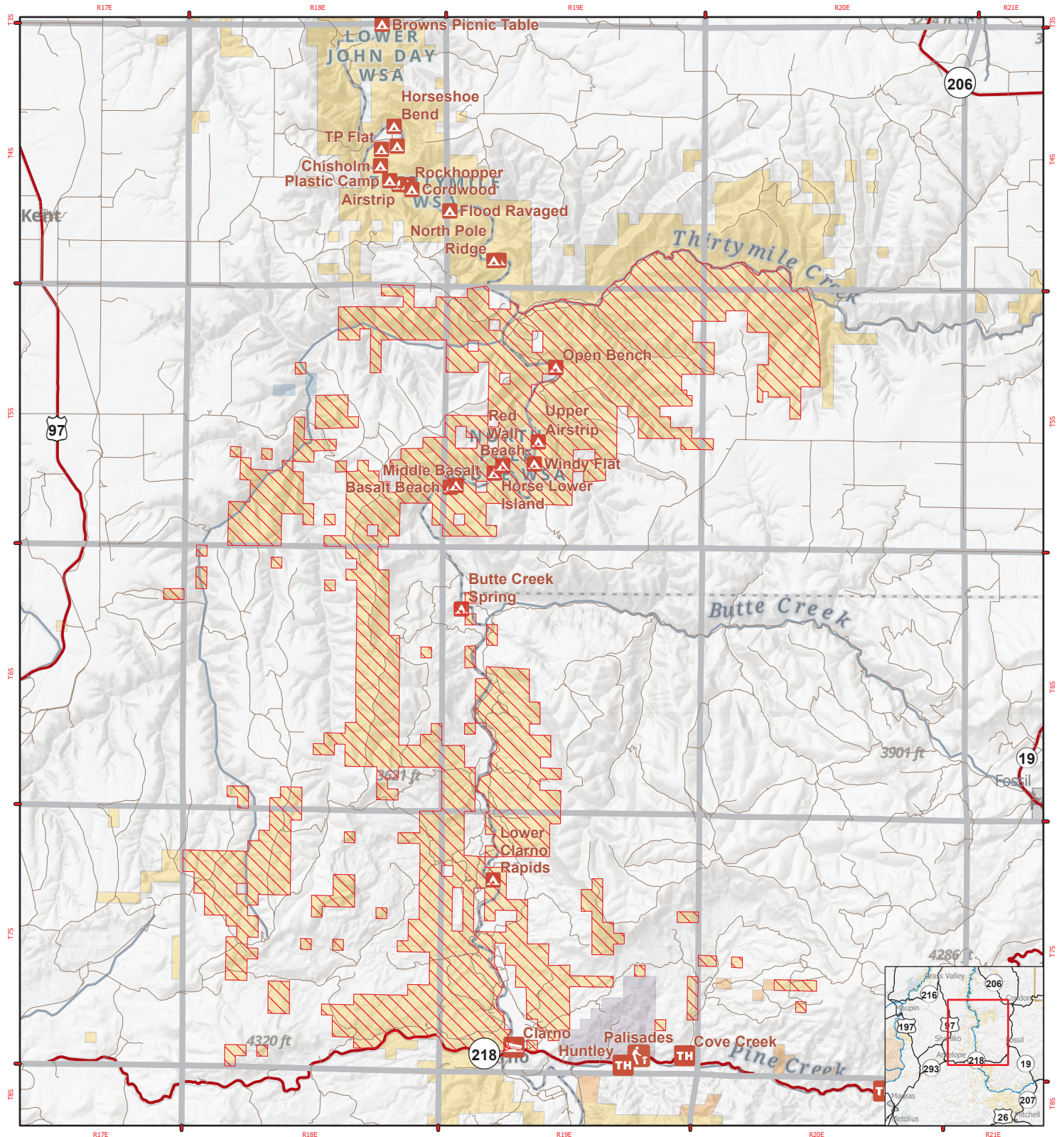
Black Rock Fire Closure

Emergency Public Closure of BLM Lands

Bureau of Land Management
Prineville District Office
3050 NE 3rd St
Prineville, OR 97754
(541) 416-6700



9/8/2025



- BLM Closure Area
- Road
- Major road

- Highway
- Administered Lands**
- Bureau of Land Management
- National Park Service

- Bureau of Indian Affairs
- State
- Private/Other



0 1 2 Miles
0 1 2 3 4 5 Kilometers

No warranty is made by the Bureau of Land Management as to the accuracy, reliability, or completeness of this map or the data displayed for individual use or aggregate use with other data.