



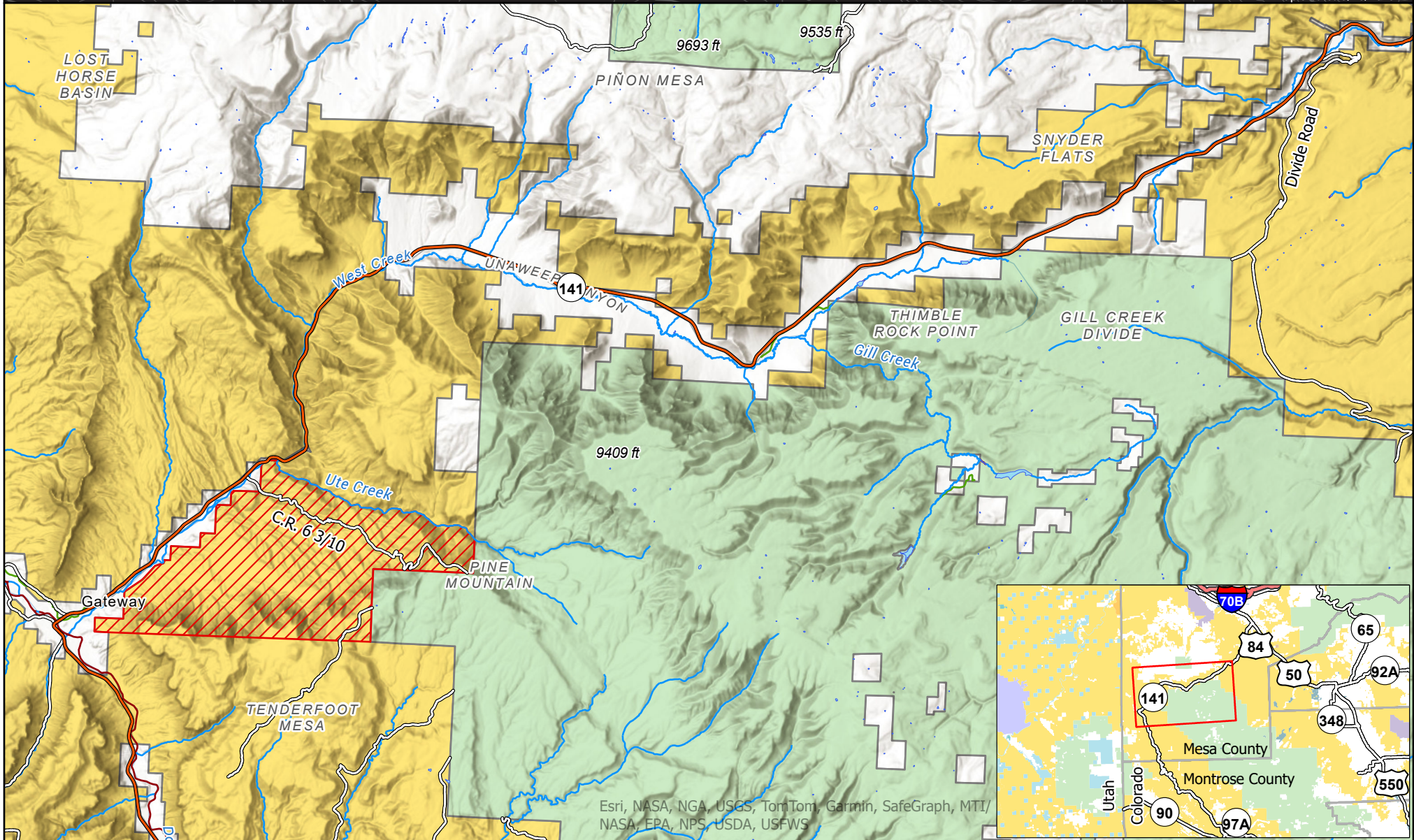
Turner Gulch Fire Area Closure

Updated Bureau of Land Management Temporary Closure Due to Fire Activity

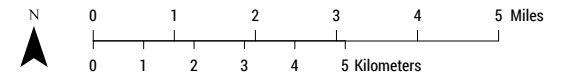
Bureau of Land Management
Grand Junction Field Office
2815 H Road
Grand Junction, CO 81506
970-244-3000



Map Created: 9/10/2025



- Turner Gulch Fire Area Closure - 12 September Update
- Bureau of Land Management
- US Forest Service
- State and US Highways
- Private
- County Roads
- State



No warranty is made by the Bureau of Land Management as to the accuracy, reliability, or completeness of this map or the data displayed for individual use or aggregate use with other data.