



United States Department of the Interior

BUREAU OF LAND MANAGEMENT

Prineville District Office
3050 NE 3rd Street, Prineville, Oregon 97754
blm.gov/office/Prineville-district-office

EMERGENCY PUBLIC LAND CLOSURE

AGENCY: Bureau of Land Management, Prineville District, Oregon.

ACTION: Reduction in Temporary Closure of Public Lands

SUMMARY: Pursuant to 43 CFR 8364, the Bureau of Land Management (BLM) hereby provides notice that effective immediately, the public lands described below are closed to all forms of public access. This action is in response to a fire currently active in the area. The BLM is closing public lands to reduce conflicts with emergency crews and allow for fire suppression and to ensure public safety, land health, and resource integrity.

AFFECTED AREA: The BLM-managed lands in Jefferson and Deschutes Counties in the following area:

All BLM-administered lands west of Lower Bridge and McKenzie Canyon Way to Stevens Canyon/Grandview Loop/Fly Lake Road; and generally south of SW Grandview Loop and north of Hwy 126, and including the 40-acre parcel of BLM near the origin of the fire at SW Jordan Road (see attached map).

DATES: The closure is effective immediately and will remain until conditions allow for safe use of the public lands.

FOR FURTHER INFORMATION CONTACT: The Prineville District Front Desk, at 541-416-6700
BLM_OR_PR_Mail@blm.gov. This notice and the closure notice will be available online.

DISCUSSION OF THE RULES: All uses within the area are prohibited. Exceptions to these prohibitions are noted below under Exemptions. Public safety issues such as torching trees, snags, and other fire-related concerns remain.

EXEMPTIONS: The following persons are exempt from the provisions of this Order:

1. Any Federal, State, or Local Officer, or member of an organized medical, rescue or firefighting force engaged in fire, emergency or law enforcement activities, or public utility employees engaged in emergency repairs.
2. BLM employees, contractors, or agents engaged in official duties.
3. Individuals operating within the scope of their official and legitimate governmental duties.
4. Individuals with valid existing rights for access [e.g., Reciprocal and Unilateral Right of Way agreement holders, permittees or lease holders, internal landowners, individuals traveling on open roads under alternate jurisdictions (e.g., county road)]; and,
5. Parties who carry written approval by the BLM Authorized Officer (Field Manager or District Manager) allowing access to the described public lands.

PENALTIES: Any person who violates this may be tried before a United States Magistrate and fined in accordance with 18 U.S.C. 3571, imprisoned for no more than 12 months, or both. Vehicles found in violation of this order may be removed.

EFFECTIVE: This Order is effective immediately upon signature.

Deschutes Field Manager, Prineville District



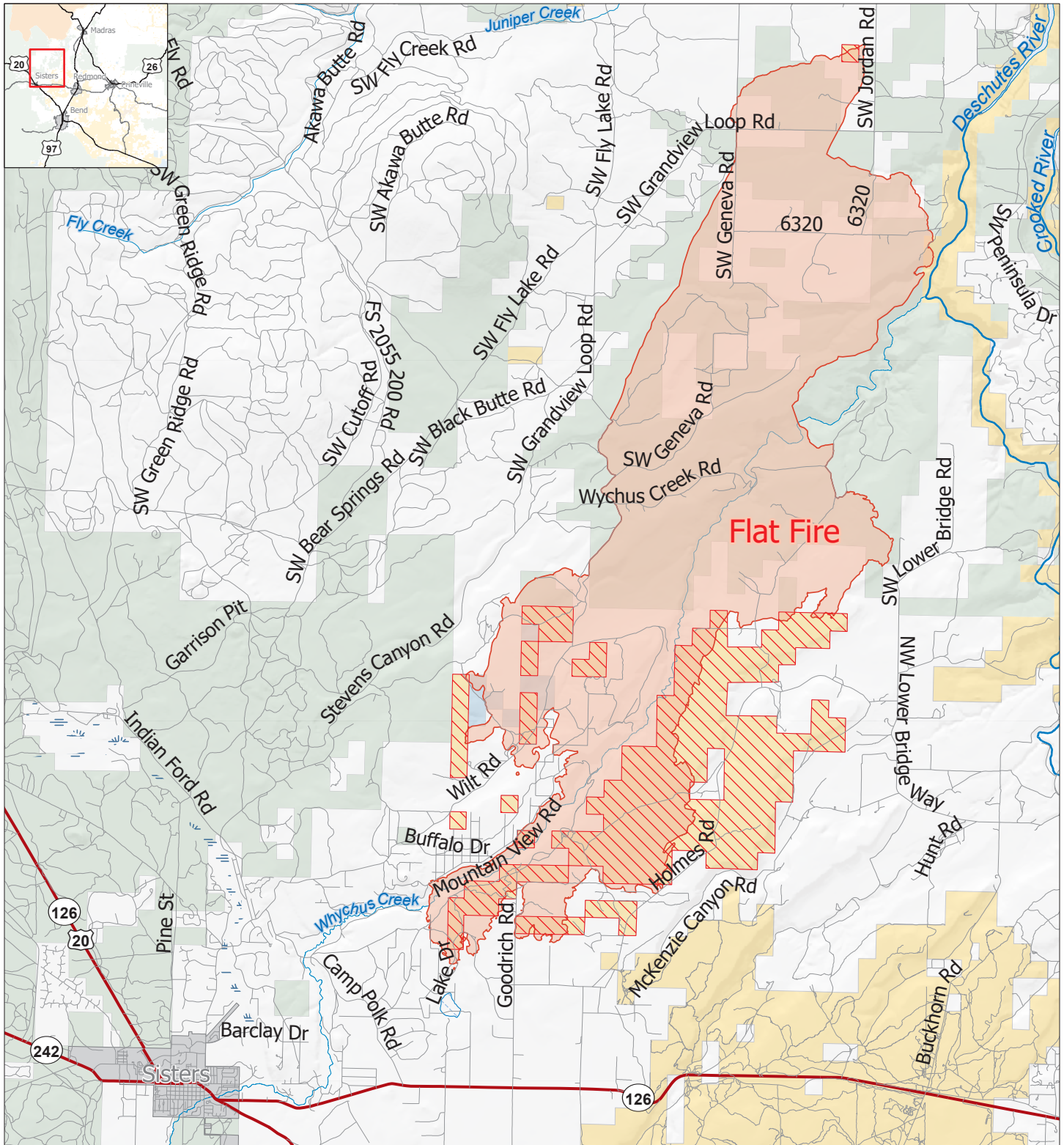
Flat Fire Closure

Emergency Public Closure of BLM Lands

Bureau of Land Management
Prineville District Office
3050 NE 3rd St
Prineville, OR 97754
(541) 416-6700

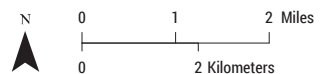


8/29/2025



- Wildfire Perimeter
- BLM Flat Fire Closure
- Road
- Highway

- Administered Lands**
- Bureau of Land Management
 - U.S. Forest Service
 - State
 - Private/Other



No warranty is made by the Bureau of Land Management as to the accuracy, reliability, or completeness of this map or the data displayed for individual use or aggregate use with other data.

Path: \\blm.doi.net\dfs\loc\GBP\OR\PPRDO\projects\fire\fire_and_fuels\Incident_Maps\2025\FlatFire\FlatFire.aprx