



United States Department of the Interior

BUREAU OF LAND MANAGEMENT

Prineville District Office
3050 NE 3rd Street, Prineville, Oregon 97754
blm.gov/office/Prineville-district-office



Notice of Temporary Closure

OFFICE: Central Oregon Field Office, Prineville District, Oregon

ACTION: Temporary Public Land Closure

SUMMARY: The Bureau of Land Management Central Oregon Field Office hereby provides notice that effective August 27, 2025, public lands described below near Mitchell, Oregon, are closed to all forms of public access. This action is for public safety purposes during emergency livestock operations.

RATIONALE: This closure is pursuant to 43 CFR 8364.1 and 43 CFR 9268.3(d).

EXEMPTIONS: This order does not apply to federal, state, and local officers and employees in the performance of their official duties; members of organized rescue or firefighting forces in the performance of their official duties; and persons with written authorization from the BLM.

LOCATION: All BLM-managed public lands in the following area:

T. 11 S., R. 21 E., Sections 5, 8, and 9, lying westerly of Burnt Ranch Road (as shown on the attached map).

DATES: This closure is effective August 27, 2025, at 12:01 AM and will remain in effect until livestock operations are completed and public safety issues are resolved, but no longer than 2 months without renewal.

NOTIFICATION METHODS AND POSTED LOCATIONS: Notification will be posted at all current entrances to the public lands described in this order, and is available at the Prineville District Office, 3050 N.E. 3rd Street, Prineville, OR 97754. This order is posted online at:

<https://www.blm.gov/programs/public-safety-and-fire/fire-and-aviation/regional-info/oregon-washington/fire-restrictions>

ENFORCEMENT AND PENALTIES: Any person who violates the temporary closures or restrictions in this order may be tried before a United States magistrate and fined in accordance with 18 U.S.C. 3571, imprisoned no more than 12 months under 43 U.S.C. 1733(a) and 43 CFR 8360.0-7, or both. In accordance with 43 CFR 8365.1-7, State or local officials may also impose penalties for violations of State law.

FOR FURTHER INFORMATION CONTACT: Prineville District Office, 541-416-6700

APPROVED BY: Kyle E. Hensley, Central Oregon Field Office Manager



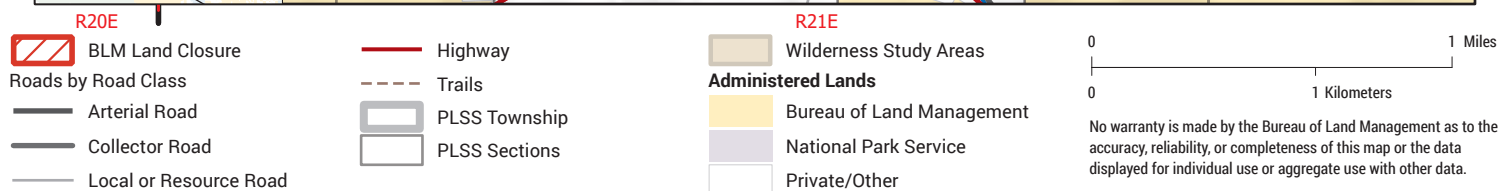
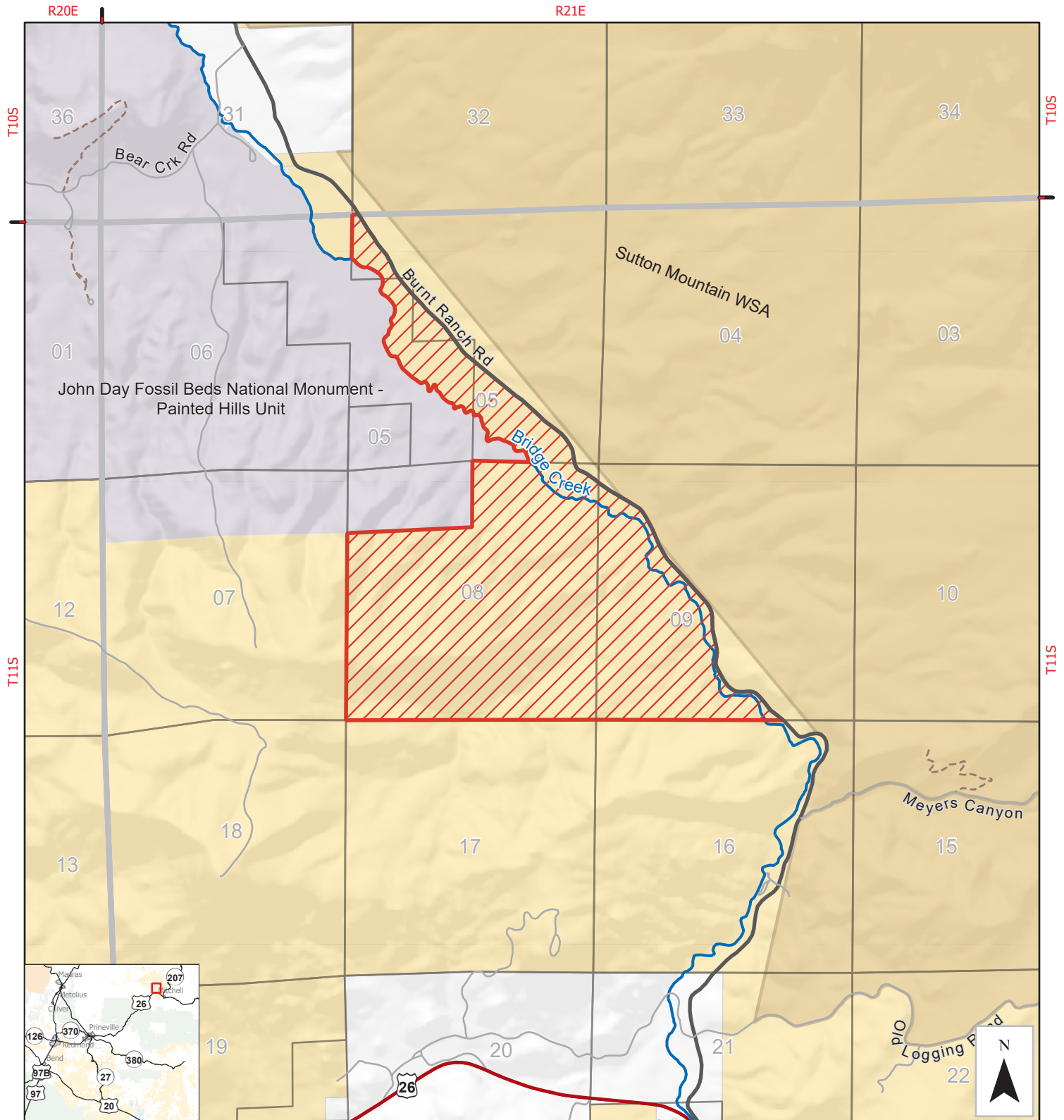
Public Safety Temporary Closure

Temporary Public Closure of BLM Land

Bureau of Land Management
Prineville District Office
3050 NE 3rd St
Prineville, OR 97754
(541) 416-6700



8/26/2025



No warranty is made by the Bureau of Land Management as to the accuracy, reliability, or completeness of this map or the data displayed for individual use or aggregate use with other data.