



United States Department of the Interior

BUREAU OF LAND MANAGEMENT
Coos Bay District Office
1300 Airport Ln, North Bend Oregon 97459
<http://www.blm.gov>



EMERGENCY CLOSURE OF PUBLIC LANDS

AGENCY: Bureau of Land Management, Coos Bay District, Oregon.

ACTION: Temporary Closure of Public Lands in Vicinity of Doerner Fir, Coos County, OR

SUMMARY: Pursuant to 43 CFR 9268.3(d) and 43 CFR 8364.1, the Bureau of Land Management (BLM) hereby provides notice that effective immediately, the public lands described below are closed to all forms of public access. This action is in response to a wildfire in the area. The BLM is closing public lands to reduce conflicts with emergency crews and allow for fire suppression activities, as well as to ensure public safety, land health, and resource integrity.

AFFECTED AREA: The following public lands east of Coquille, OR are affected by this closure:

BLM managed lands in T27S R9W Sections 28, 29, 31, 32
BLM Road 27-9-21.0
BLM Doerner Fir Trail

Please see attached map.

DATES: This closure will be effective as of 12:01 am Pacific Daylight Time on August 19, 2025, and will remain in effect until such time as conditions allow for safe use of the public lands.

FOR FURTHER INFORMATION CONTACT: Megan Harper, Public Affairs Specialist, 1300 Airport Lane, North Bend, OR 97459, telephone (541) 751-4353.

DISCUSSION OF THE RULES: The public must not enter the closure area. All public uses within the closure area are prohibited. Exceptions to these prohibitions are noted below under Exemptions. You must not enter closed recreation sites.

EXEMPTIONS: The following persons are exempt from the provisions of this Order:

1. Persons with a permit or contract issued by the BLM Coos Bay District, which specifically authorizes the otherwise prohibited act.
2. Any federal, state, or local officer or member of an organized rescue or fire fighting force while in the performance of an official duty.

PENALTIES: Any person who violates this may be tried before a United States Magistrate and fined in accordance with 18 U.S.C. 3571, imprisoned for no more than 12 months, or both. Vehicles found in violation of this order may be removed.

VALERIE
LENHARTZEN

Valerie Lenhartzzen
Myrtlewood Field Manager, Coos Bay District

Digitally signed by VALERIE
LENHARTZEN
Date: 2025.08.19 12:19:14 -07'00'

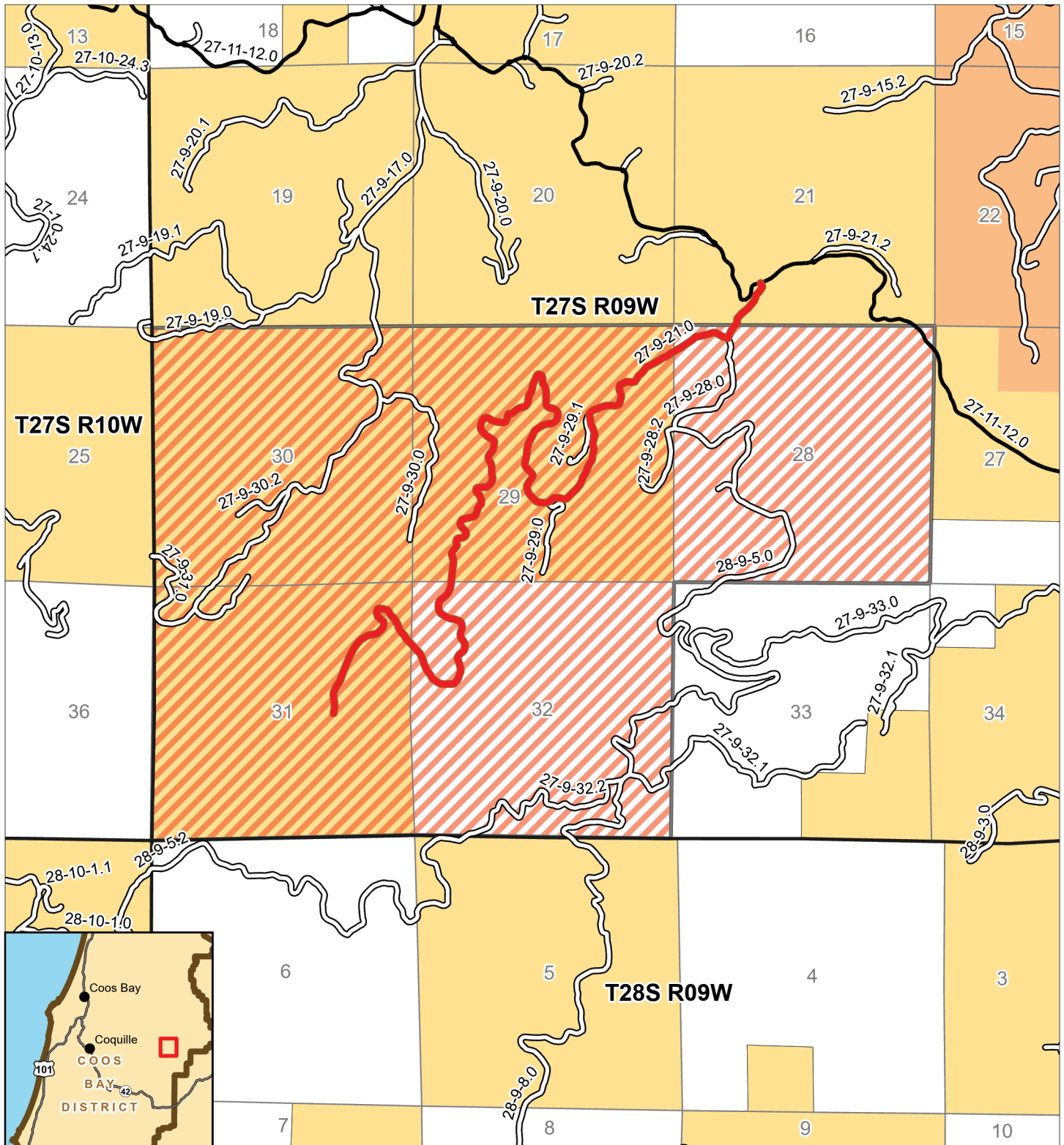


Emergency Closure Area

Bureau of Land Management
Coos Bay District
1300 Airport Lane
North Bend, OR 97459
(541) 756-0100



8/18/2025



Legend

- Closed Road
- Closed Area
- Paved Road
- Gravel Road
- BLM Administered Land
- Bureau of Indian Affairs
- Private or Other Lands

0 0.5 1 Miles

No warranty is made by the Bureau of Land Management as to the accuracy, reliability, or completeness of this map or the data displayed for individual use or aggregate use with other data.