



United States Department of the Interior



BUREAU OF LAND MANAGEMENT
White River Field Office
220 East Market Street
Meeker, CO 81641

August 23, 2025

Notice of Public Closure

Lee Fire Area Closure Order #CON05000-25-05 for BLM managed lands in

Rio Blanco County, Colorado

Pursuant to 43 CFR 8364.1, the Bureau of Land Management (BLM) is giving notice that BLM lands in Rio Blanco County and within Garfield County within and adjacent to the area of the Lee Fire as described below are temporarily closed to all unauthorized entry. Please also see the attached map.

This emergency closure is necessary to ensure public and firefighter safety during firefighting activities and suppression rehabilitation efforts. The order is effective immediately and will remain in effect until the Lee Fire is declared controlled or until this order is amended or rescinded.

The burned landscape, including vegetation, remains dynamic and unpredictable as it naturally recovers from the fire impacts. Public users are reminded to maintain extra caution and vigilance while inside the recovering burned areas as the natural recovery process continues to change existing landscape conditions. The public is reminded that all laws protecting public lands and resources from damage or unauthorized use remain in place.

Closure Area Description: This closure modifies the closure described in order #CON0000-25-04 this closure to the following: This closure affects all BLM lands as described within the following boundaries: areas South of Colorado Highway 64, East and South of Rio Blanco County (RBC) Road 66, South and East of RBC 127, South of RBC Road 22, East and North of RBC 5, North of Lee Gulch, East of RBC Road 3, North of RBC 5, East of Story Gulch, North of Trapper Creek, West of McCarthy Gulch, North of RBC Road 5, and West of Highway 13.

6th Principal Meridian

T. 1 N., R. 95 W., secs. 27, 28, 31 through 34;
T. 1 N., R. 96 W., secs. 25, 26;
T. 1 S., R. 94 W., secs. 30, 31
T. 1 S., R. 95 W., secs. 2 through 36;
T. 1 S., R. 96 W., secs. 4 through 36;
T. 1 S., R. 97 W., secs. 1, 2, 11, through 14, 22 through 27, 35, 36;
T. 2 S., R. 94 W., secs. 6, 7, 8, 17, 18, 19, 20, 30, 31;
T. 2 S., R. 95 W., secs. 1 through 15, 23, 24, 25, 36
T. 2 S., R. 96 W., secs. 1 through 6, 8 through 16, 21 through 29, 32 through 36;

T. 3 S., R. 94 W., secs. 6, 7, 8, 17, 18, 19, 20, 29, 30, 31, 32;
T. 3 S., R. 95 W., secs. 1 through 17, 19 through 29, 32 through 36,;
T. 3 S., R. 98 W., secs 1, 12, 13, 23 through 26, 34, 35, 36;
T. 4 S., R. 94 W., secs 5, 6;
T. 4 S., R. 95 W., secs 1, 2, 11, 12, 13;

Prohibited Acts:

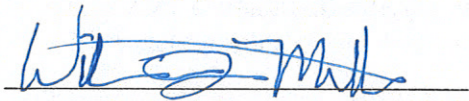
1. You must not enter or use BLM lands described in this order.
2. You must not use the roads or trails in the area described in this order.

Exemptions:

The following persons are exempt from this order: Federal, state, and local officers and employees in the performance of their official duties; members of organized rescue or fire-fighting forces in the performance of their official duties; and persons with permitted authorization from the BLM (i.e. oil and gas permittees, grazing permittees and right-of-way holders) through daily coordination with BLM and incident command operations. Penalties: Any person who violates the above rules and/or restriction may be tried before a United States Magistrate and fined no more than \$1,000, imprisoned for no more than 12 months, or both. Such violations may also be subject to the enhanced fines provided for by 18 U.S.C. 3571.

For more information:

BLM White River Field Office, (970) 878-3800.

A handwritten signature in blue ink, appearing to read 'WJ Mills', is written over a horizontal line.

William J. Mills
Field Manager

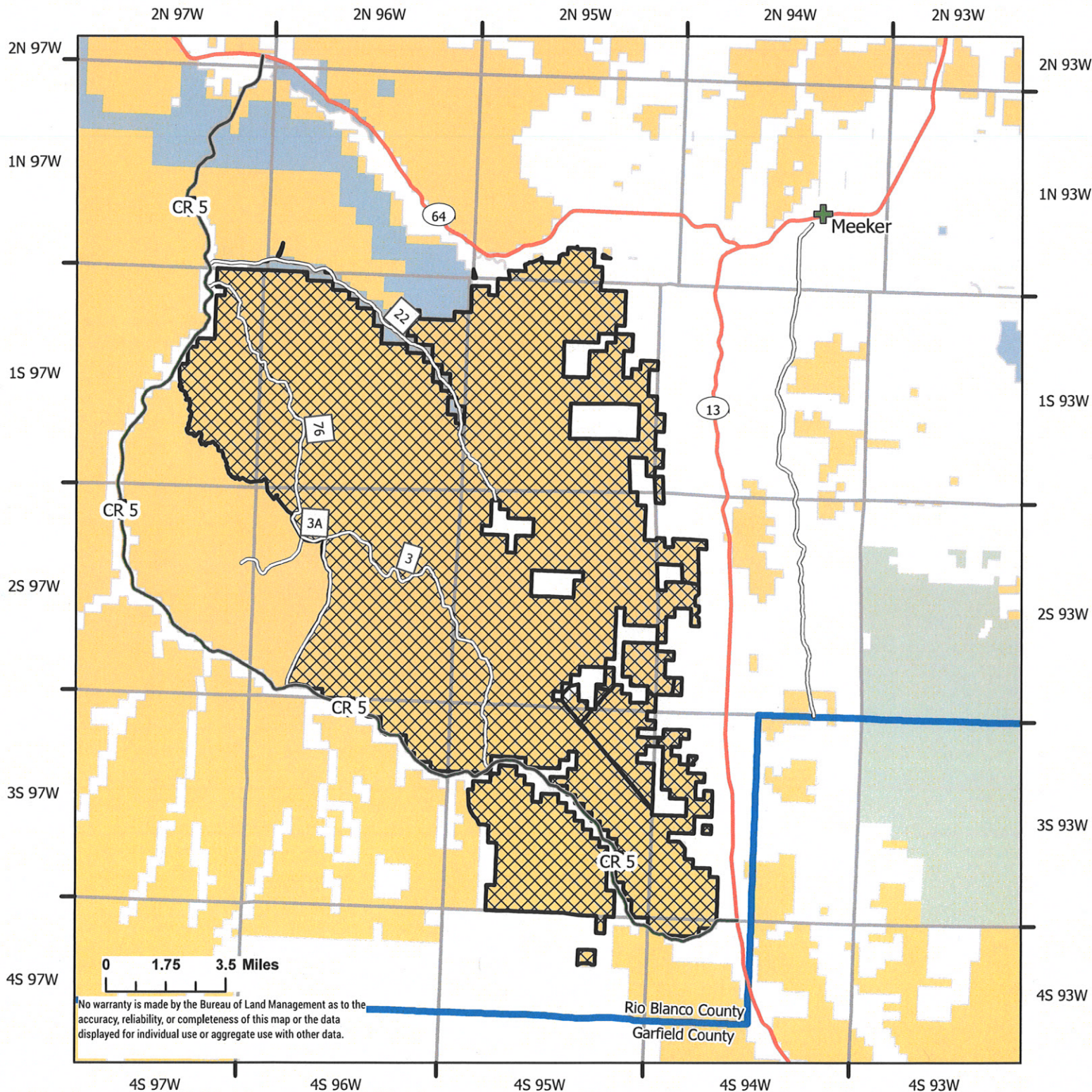


White River BLM Field Office Emergency Closure Areas #CON05000-25-05

Bureau of Land Management
White River Field Office
220 E. Market St
Meeker, CO 81641
970-878-3800

Colorado

8/24/2025



EM_Closure_Area_8_24_2025_WRFO_BLM

CO City Point Locations

County Boundaries

Township & Range

Non-BLM Routes

County Roads

Interstate

State Highway

US Highway

County_RD_5

Surface Management Agency - Land Manager

Bureau of Land Management

State, County, City: Areas

Private

State

US Forest Service

