



U.S. Department of the Interior
Bureau of Land Management

Uncompahgre Field Office Business Plan

Draft Initiation and Public Involvement Strategy

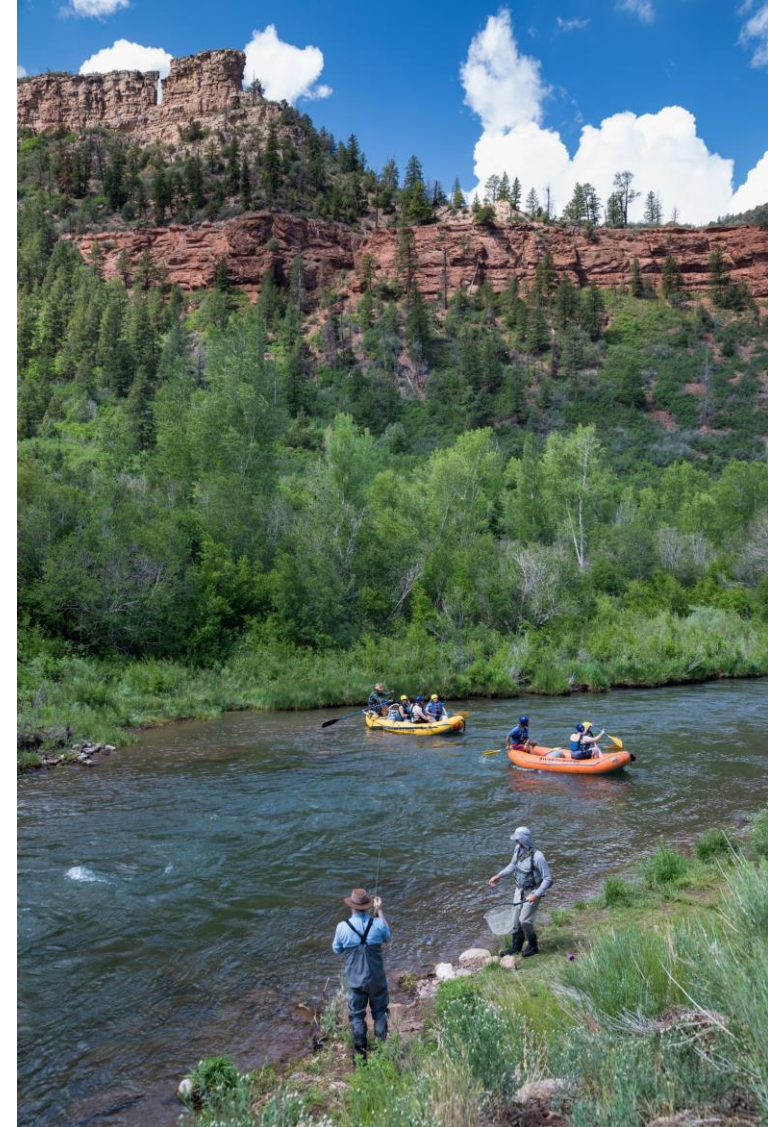




Overview

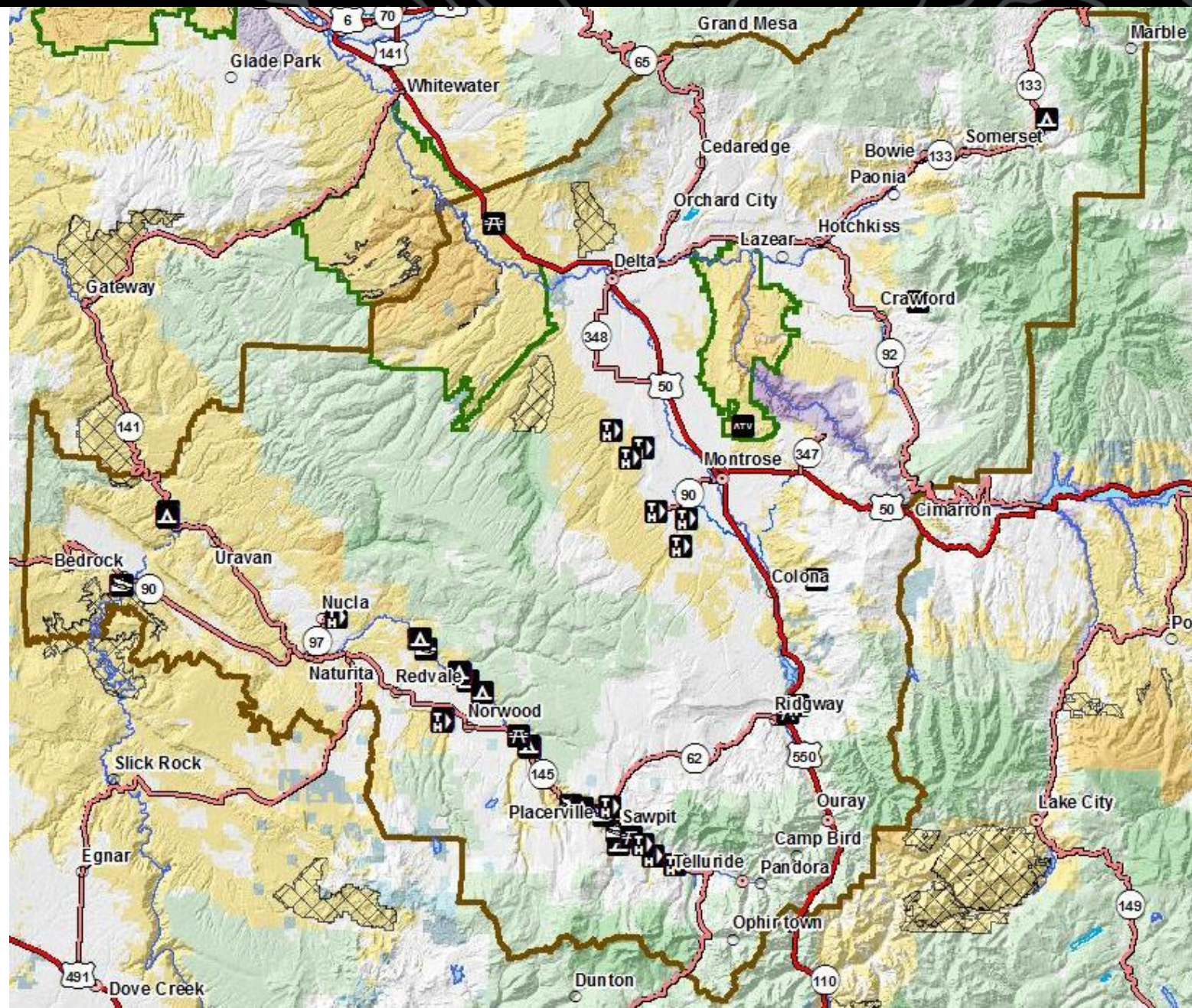
- UFO Fee Account LLCOS05000
 - Does not include Gunnison Gorge NCA (LLCOS05400)
 - Does not include Dominguez-Escalante NCA (LLCOG03000)
- Initiation of a Fee Program
 - UFO currently only collects SRP Fees
- Includes 11 Existing and 3 Proposed Recreation Sites
- Finishing Draft Proposal and Public Involvement Plan

UFO currently has no fee structure that would generate the revenue necessary **to meet increasing visitor usage** and **improve visitor experience** within the field office.





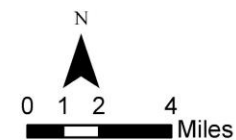
U.S. Department of the Interior
Bureau of Land Management





San Miguel River Recreation Opportunities

- | | | | |
|--------------|------------------------|----------------------------|---------------------------|
| Boat Launch | County Seats | San Miguel River | Bureau of Land Management |
| Campground | Other Cities and Towns | Scenic and Historic Byways | Private |
| Day Use Site | US Highway | BLM Field Office Areas | State |
| Trailhead | State Highway | County Boundaries | State, County, City Areas |
| | | | US Forest Service |



NOTE TO MAP USERS
No warrantee is made by the Bureau of Land Management as to the accuracy, reliability, or completeness of the data layers shown on this map. The official land records of the data providers should be checked or current status on any specific tract of land.



Recreation Sites

RMA	RMZ	Targeted Activities	Recreation Type ²	Facility Name
Dry Creek	3	OHV use, mountain biking, hiking, and horseback riding	Staging Area	Rim Road Staging Area
	4	Mountain biking, running, hiking, horseback riding and accessible trails using current and emerging adaptive equipment	Campground*	Electric Hills Rim*
Not in RMA	N/A	Hiking and camping	Campgrounds*	Nucla*
Paradox	N/A	OHV riding, mountain biking, hiking, rock climbing and bouldering, rafting, scenic touring, hunting	Campground*	Paradox*
Ridgway Trails	2	Day-use Mountain biking, running, and hiking	Day-Use	Ridgway Area Trails
San Miguel	1	Activities in this zone include rafting, kayaking, fishing, hiking, mountain biking, camping, nonmotorized trail use, educational programs, and scenic driving	Day-Use	Lower Beaver
				Specie Creek
				Caddis Flats
				Upper Beaver
	4	Rafting, kayaking, fishing, camping, and educational programs	Campgrounds	Lower Beaver
				Caddis Flats
				Fall Creek
Spring Creek	1	Day-use mountain biking, running, hiking, and educational programs	Day-Use	Buzzard Gulch
				Lower Spring Creek

² *Campgrounds are not currently constructed



Why these sites?

- High visitation at current sites
- Anticipated high visitation once new trail projects are complete
- Many already have most of the Standard Amenities:
 - (1) a designated developed parking, (2) a permanent toilet facility, (3) a permanent trash receptacle, (4) interpretive sign, exhibit, or kiosk, (5) picnic tables, (6) security services
- Higher level of staff involvement
- Visitor experience would be improved with increased amenities



Current Operating Costs

Fiscal Year	Labor	Operations	Vehicle	Total
2017	\$162,153	\$46,598	\$26,477	\$235,229
2018	\$136,265	\$132,495	\$35,428	\$304,188
2019	\$198,638	\$10,146	\$63,549	\$272,334
2020	\$239,560	\$86,056	\$24,344	\$349,960
2021	\$323,222	\$37,714	\$24,178	\$385,114
Average	\$211,968	\$62,602	\$34,795	\$309,365





Fee Proposal

Recreation Site	Existing Fee	Proposed Fee
Standard Amenity Fee at Day-Use Sites		
Lower Beaver, Specie Creek, Caddis Flats, Ridgway Area Trails, Buzzard Gulch, Lower Spring Creek, Rim Road, Upper Beaver	\$0	\$4/vehicle
Site Specific Standard Amenity Pass (Annual Day-Use Pass)		
All Day-Use Sites	\$0	\$20/year
Expanded Amenity Fee at Existing Sites		
Lower Beaver, Caddis Flats, Fall Creek, Ledges Cottonwood, Ledges Rockhouse	\$0	\$12/night
Expanded Amenity Fee at Proposed Sites		
Electric Hills Rim, Nucla, Paradox	\$0	\$12/night

Fee Proposal based on Fair Market Value and Cost Recovery Fee Calculation



Public Involvement Plan

- Public meetings at Uncompahgre Field Office and the Norwood Library
- Post notice at Uncompahgre Field Office inviting comments
- Post notice at trailhead and recreation site kiosks
- Issue press release announcing fee increase
- Notify SRP holders using recreation sites in the plan
- Post information on UFO web site and ePlanning
- Continued engagement with the RAC
- Post Federal Register notice of proposed new fees as per REA, Sec. 4 (b).
- Brief local Congressional Staff on fee proposal.
- Brief county commissioners on fee proposal.
- Contact interested individuals/organizations about the fee proposal (partner groups, volunteers, etc)
- Tribal Consultation
- Send internal memo to UFO employees





Asks for RAC

- Review of forthcoming Draft Plan
- Public Involvement Sufficient?
- Next Steps and Necessary Information for the RAC

