

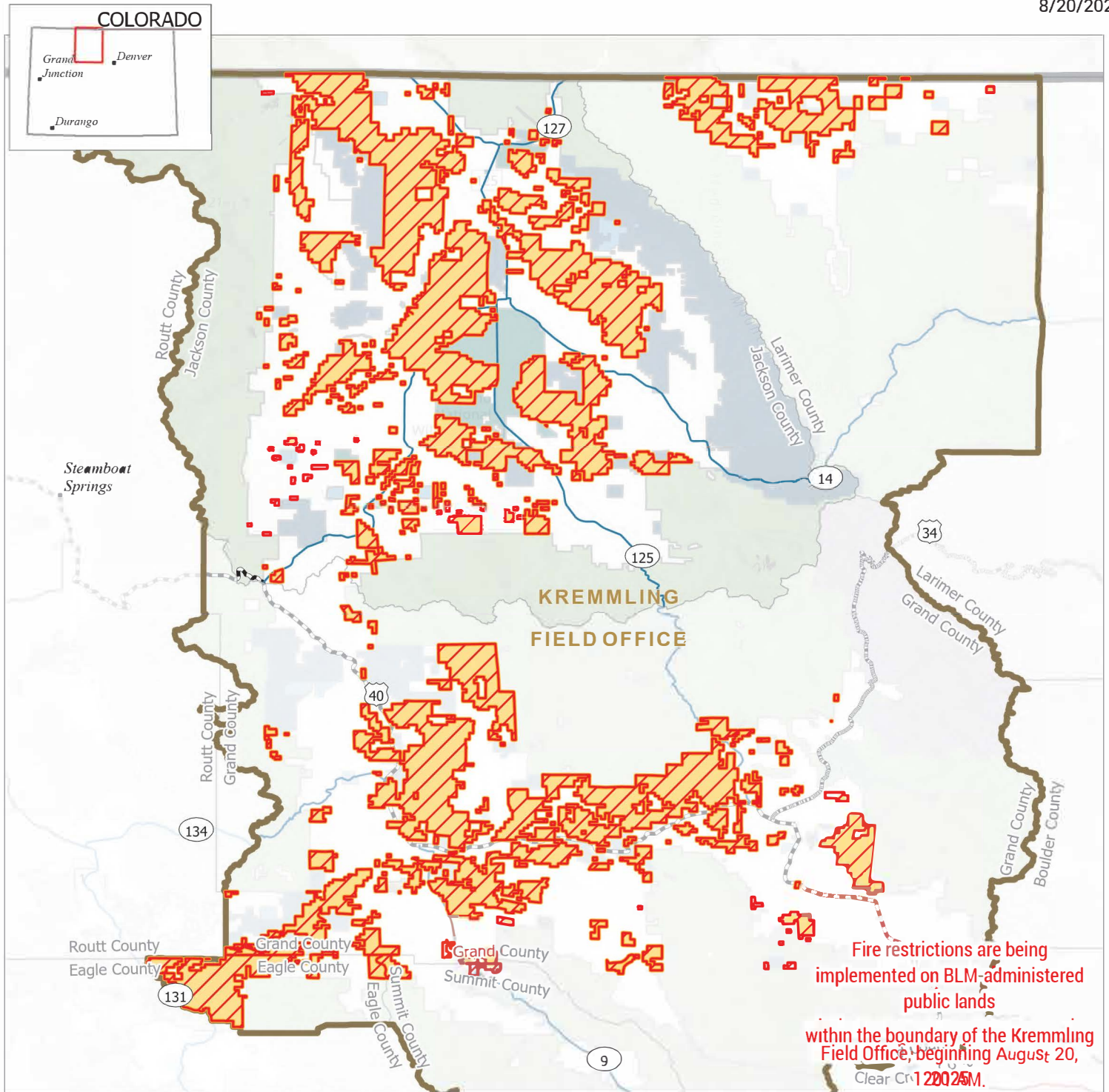


Kremmling Field Office

BLM Lands Under Stage 2 Fire Restrictions

Bureau of Land Management
Kremmling Field Office
2103 Park Ave
Kremmling, CO 80459
970-724-3000

8/20/2025



- | | | |
|---|----------------------------|------------------------------|
| Kremmling Field Office Boundary | Bureau of Reclamation | State |
| BLM Lands in the Kremmling Field Office under Stage 2 Fire Restrictions | State, County, City, Areas | US Forest Service |
| Bureau of Land Management | National Park Service | US Fish and Wildlife Service |
| | Private | |



No warranty is made by the Bureau of Land Management as to the accuracy, reliability, or completeness of this map or the data displayed for individual use or aggregate use with other data.