



United States Department of the Interior



BUREAU OF LAND MANAGEMENT
White River Field Office
220 East Market Street
Meeker, CO 81641

August 10, 2025

Notice of Public Closure

Lee Fire Area Closure Order #CON05000-25-02 for BLM managed lands in

Rio Blanco County, Colorado

Pursuant to 43 CFR 8364.1, the Bureau of Land Management (BLM) is giving notice that BLM lands in Rio Blanco County within and adjacent to the area of the Lee Fire as described below are temporarily closed to all unauthorized entry. Please also see attached map.

This emergency closure is necessary to ensure public and firefighter safety during firefighting activities and suppression rehabilitation efforts. The order is effective immediately and will remain in effect until the Lee Fire is declared controlled or until this order is amended or rescinded.

The burned landscape, including vegetation, remains dynamic and unpredictable as it naturally recovers from the fire impacts. Public users are reminded to maintain extra caution and vigilance while inside the recovering burned areas as the natural recovery process continues to change existing landscape conditions. The public is reminded that all laws protecting public lands and resources from damage or unauthorized use remain in place.

Closure Area Description: This closure modifies the closure described in order #CON0000-25-01 this closure to the following: This closure affects all BLM lands as described within the following boundaries: areas South of Colorado Highway 64, East of Rio Blanco County (RBC) Road 5, South of RBC 26, East of RBC 29, East of RBC 87 for approximately 7 miles until intersection with private lands then continuing East along Township 4 South Range 98 West northern boundary line for approximately 4 miles, then south along the western boundary line of Township 4 South Range 98 West to the intersection of with Willow Creek and remaining north Clear Creek and North of Jack Rabbit Ridge, North of Trapper Creek, West of Highway 13, North of Piceance Creek (along Garfield County Road 256), east of Garfield County 257, north of Harris Creek until White River National Forest Boundary, East of White River National Forest Boundary (West of Hay Flats area), North along Township 1 South and 94 West including all areas of LO7, South and West of RBC County Road 4, north on Highway 13 until intersection with field office boundary, south of White River Field Office boundary until intersection of Rio Blanco County line, south of RBC Road 77 and East of RBC Road 71 until intersection with Highway 64.

6th Principal Meridian

T. 3 N., R. 93 W., sec. 19, 20, through 33;

T. 3 N., R. 94 W., secs. 13, 18, through, 26 through 36;

INTERIOR REGION 7 • UPPER COLORADO BASIN

COLORADO, NEW MEXICO, UTAH, WYOMING

T. 3 N., R. 95 W., secs.13 through 36;
 T. 3 N., R. 96 W., secs. 13 through 36;
 T. 3 N., R. 97 W., secs. 13 through 36;
 T. 2 N., R. 93 W., secs. 4 through 7 and 31 and 32;
 T. 2 N., R. 94 W., secs. All;
 T. 2 N., R. 95 W., secs. All;
 T. 2 N., R. 96 W., secs. All;
 T. 2 N., R. 97 W., secs. 1, 2, 10, through 14, 24, 25 and 36;
 T. 1 N., R. 94 W., secs. 1 through 11, 13, 14, 15, 20, through, 29, and 33;
 T. 1 N., R. 95 W., secs. 1 through 12, 13, 17 through 21, 23, 27 through 34;
 T. 1 N., R. 96 W., secs. All;
 T. 1 N., R. 97 W., secs. 1, 11, 12, 13, 22 through 27, 35, 36;
 T. 1 S., R. 94 W., secs. 11, through 15, 23, through 26, 30, 31, 33, through 36
 T. 1 S., R. 95 W., secs. All;
 T. 1 S., R. 96 W., secs. All;
 T. 1 S., R. 97 W., secs. 1 through 4, 9 through 16, 22 through 26
 T. 2 S., R. 94 W., secs. 1, through 4, 6, through 10, 15, through 20, 28, through 32, 34, 35, 36
 T. 2 S., R. 95 W., secs. 1 through 15, 23, 24, 25, 36
 T. 2 S., R. 96 W., secs. All;
 T. 2 S., R. 97 W., secs. 1 through 4, 9 through 16, 20 through 36;
 T. 3 S., R. 93 W., secs. 19, 20, 29 through 32;
 T. 3 S., R. 94 W., secs. 1, 2, 3, 6, 7, 8, 10, 11, 14, 15, 17 through 20, 22, 23, 26, 27, 29, through 31, 33,
 34, 25, 36
 T. 3 S., R. 95 W., secs. All;
 T. 3 S., R. 96 W., secs. All;
 T. 3 S., R. 97 W., secs. All;
 T. 3 S., R. 98 W., secs 1, 12, 13, 23 through 26, 34, 35, 36;
 T. 4 S., R. 94 W., secs 5 through 9, 16 through 21, 28 through 33;
 T. 4 S., R. 95 W., secs 1, 2, 11, 12, 13;
 T. 4 S., R. 96 W., secs 1 through 6, 19, 20, 21, 29 through 32;
 T. 4 S., R. 97 W., secs 1 through 32, 36;
 T. 4 S., R. 98 W., secs 1 through 5, 7, 9, 18, 34;
 T. 5 S., R. 94 W., secs 5, 6, 7;
 T. 5 S., R. 95 W., secs 1, through 4, 11, 12
 T. 5 S., R. 96 W., secs 6, 7, 17, 18;
 T. 5 S., R. 97 W., secs 5, through 8, 18, 19;
 T. 5 S., R. 98 W., secs 1 through 4, 6, 10 through 15, 20, 21;

Prohibited Acts:

1. You must not enter or use BLM lands described in this order.
2. You must not use the roads or trails in the area described in this order.

Exemptions:

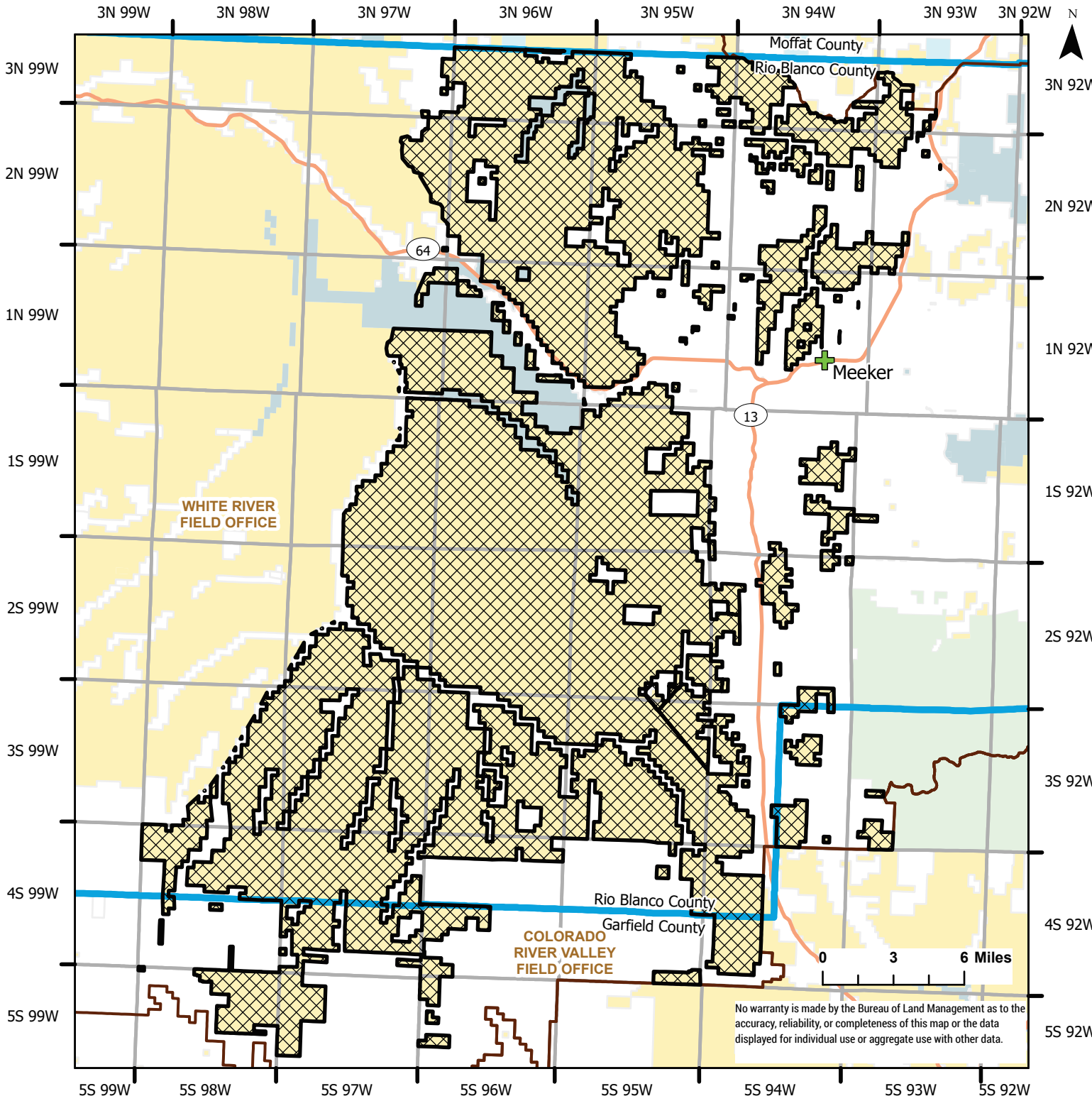
The following persons are exempt from this order: Federal, state, and local officers and employees in the performance of their official duties; and members of organized rescue or fire-fighting forces in the performance of their official duties. Penalties: Any person who violates the above rules and/or restriction may be tried before a United States Magistrate and fined no more than \$1,000, imprisoned for no more than 12 months, or both. Such violations may also be subject to the enhanced fines provided for by 18 U.S.C. 3571

For more information:

BLM White River Field Office, (970) 878-3800.

William J. Mills
Field Manager

8/10/2025



- EM_Closure_Area_8_10_25
- CO City Point Locations
- BLM Field Office Area Boundaries
- County Boundaries
- Township & Range

- Non-BLM Routes**
- Interstate
 - State Highway
 - US Highway

- Surface Management Agency - Land Manager (No Outline)**
- Bureau of Land Management
 - State, County, City: Areas
 - Private
 - State
 - US Forest Service

No warranty is made by the Bureau of Land Management as to the accuracy, reliability, or completeness of this map or the data displayed for individual use or aggregate use with other data.