



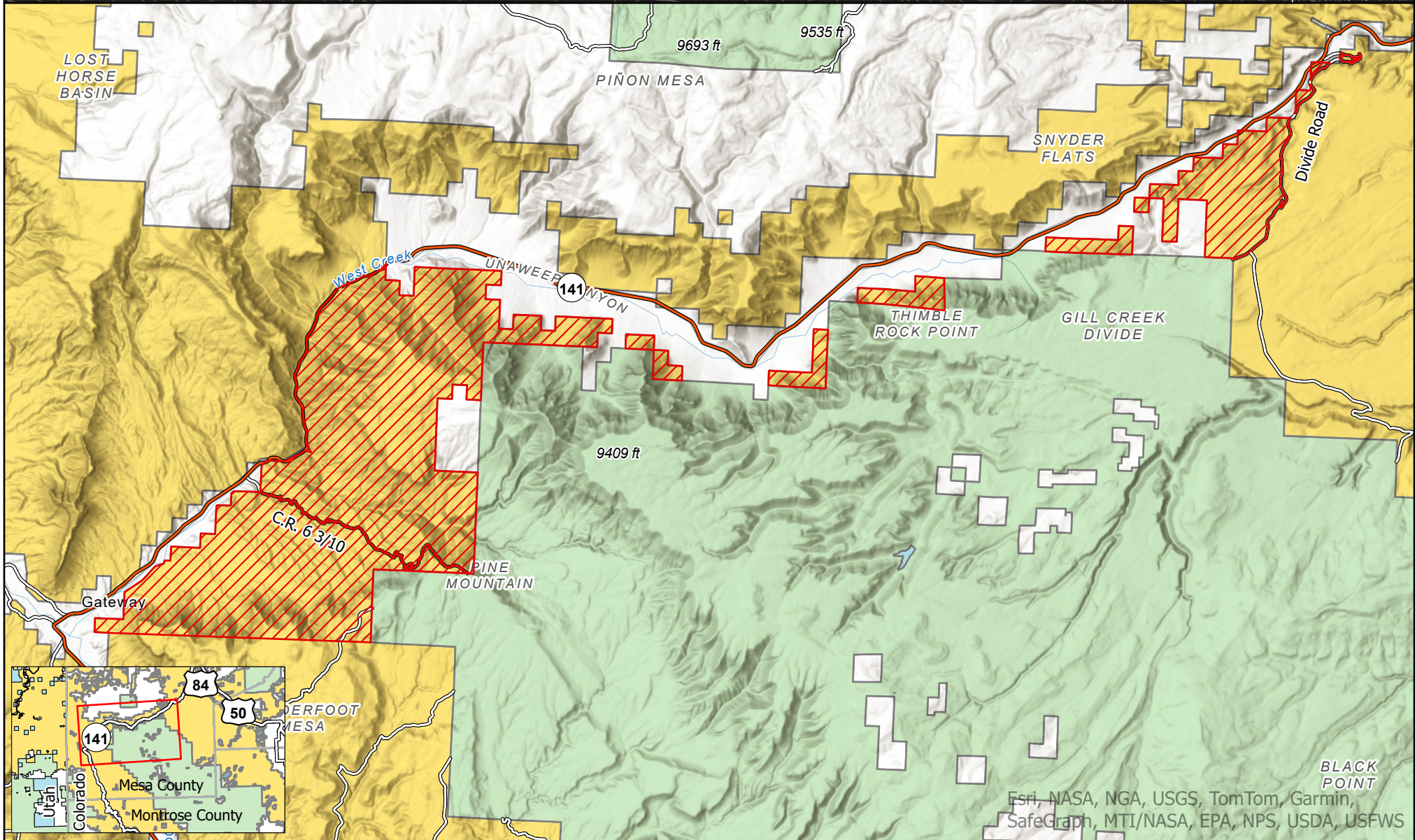
# Turner Gulch Fire Area Closure

Updated Bureau of Land Management Temporary Closure Due to Fire Activity

Bureau of Land Management  
Grand Junction Field Office  
2815 H Road  
Grand Junction, CO 81506  
970-244-3000

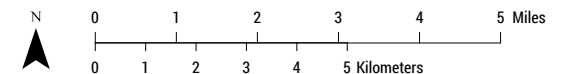


Map Created: 8/20/2025



Esri, NASA, NGA, USGS, TomTom, Garmin,  
SafeGraph, MTI/NASA, EPA, NPS, USDA, USFWS

- Turner Gulch Fire Area Closure - 20 August 2025 Update
- State and US Highways
- County Roads
- Bureau of Land Management
- Private
- State
- US Forest Service



No warranty is made by the Bureau of Land Management as to the accuracy, reliability, or completeness of this map or the data displayed for individual use or aggregate use with other data.