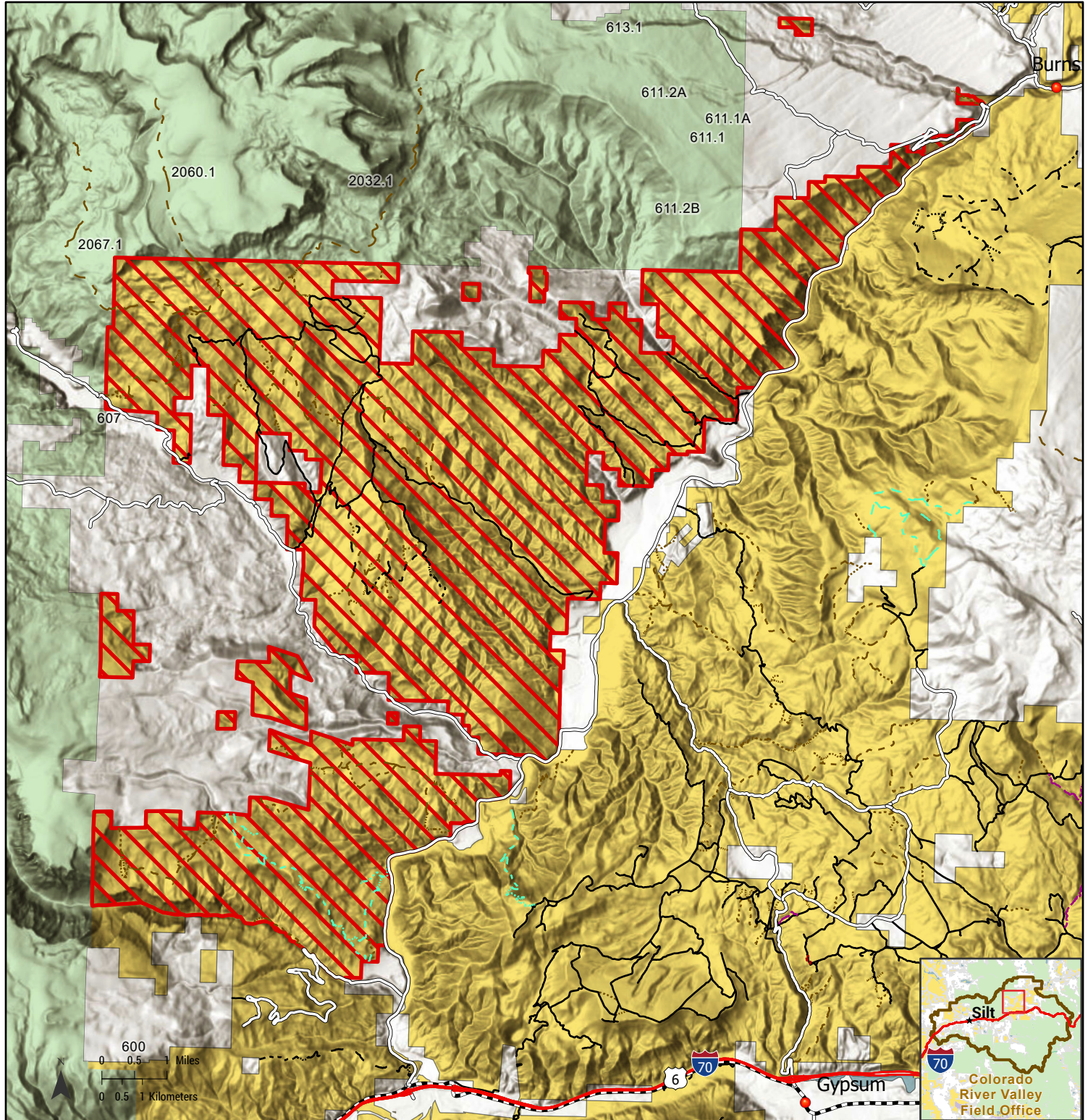




Derby Fire BLM Area Closure

Beginning August 20, 2025

Bureau of Land Management
Colorado River Valley Field Office
2300 River Frontage Road
Silt, Colorado 81652
(970) 876-9000



Extent Scale: 1:135,000

- BLM_DlrbyFire_closure
- Colorado Routes
- Interstate
- Interstate
- US Highway
- County Roads

- All Modes of Transportation
- Motorcycle Shared
- Shared Motorcycle, ATV, UTV and non-motorized
- Technical High-Clearance Vehicles Only

- Shared Non-Motorized (Hiking, Bicycle, Equestrian)
- Equestrian and Hiking only
- BLM Administrative Unit
- Field Office Boundary

- Surface Management
- Bureau of Land Management
- Bureau of Reclamation
- State, County, City, Areas
- National Park Service

- Other Federal
- Private
- State
- US Forest Service
- US Fish and Wildlife Service