



United States Department of the Interior



BUREAU OF LAND MANAGEMENT
Colorado River Valley Field Office
2300 River Frontage Road
Silt, CO 81652

August 11, 2025

Notice of Public Closure

Lee Fire Area Closure Order #CON05000-25-02 for BLM managed lands in Garfield County, Colorado

Pursuant to 43 CFR 8364.1, the Bureau of Land Management (BLM) is giving notice that BLM lands in Garfield County within and adjacent to the area of the Lee Fire as described below are temporarily closed to all unauthorized entry. Please also see attached map.

This emergency closure is necessary to ensure public and firefighter safety during firefighting activities and suppression rehabilitation efforts. The order is effective immediately and will remain in effect until the Lee Fire is declared controlled or until this order is amended or rescinded.

The burned landscape, including vegetation, remains dynamic and unpredictable as it naturally recovers from the fire impacts. Public users are reminded to maintain extra caution and vigilance while inside the recovering burned areas as the natural recovery process continues to change existing landscape conditions. The public is reminded that all laws protecting public lands and resources from damage or unauthorized use remain in place.

Closure Area Description: This closure affects all BLM lands as described within the following boundaries: areas South of Piceance Creek (both Garfield County Road 256 and Rio Blanco County Road 5), East of Cow Creek Road, East and South of Garfield County 249 Road (i.e. West Branch Cow Creek Road), East of Parachute Creek North of Southern boundary line of Township 5 North Range 95, 94, 93 West, West of Highway 13, to West of Highway 325, West of Garfield County Road 217, South of White River National Forest Boundary (South of Hay Flats area), South of Mullen Gulch, and East of Garfield County 257.

6th Principal Meridian

- T. 3 S., R. 93 W., secs. 29, 30, 31, 32
- T. 3 S., R. 93 W., secs. 36;
- T. 4 S., R. 92 W., secs. 5, 6, 7, 8, 15, 17 through 22, 27 through W/2 34;
- T. 4 S., R. 93 W., secs 1 through 17, 19 through 36;
- T. 4 S., R. 94 W., secs 1, 3, 35, 36;
- T. 5 S., R. 92 W., secs NWNW 3, 4, 5, 6;
- T. 5 S., R. 93 W., secs All;
- T. 5 S., R. 94 W., secs All;
- T. 5 S., R. 95 W., secs 1, 2, 4, 11 through 14, 23 through 26, 35, 36;

Prohibited Acts:

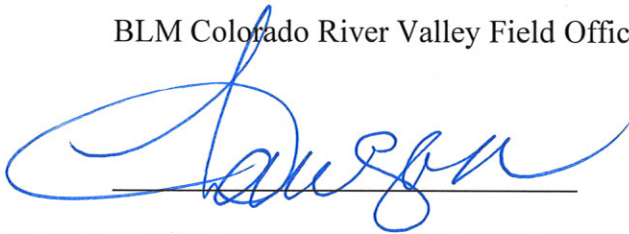
1. You must not enter or use BLM lands described in this order.
2. You must not use the roads or trails in the area described in this order.

Exemptions:

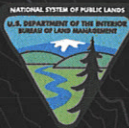
The following persons are exempt from this order: Federal, state, and local officers and employees in the performance of their official duties; members of organized rescue or fire-fighting forces in the performance of their official duties; and persons with permitted authorization from the BLM (i.e. oil and gas permittees, grazing permittees and right-of-way holders) through daily coordination with BLM and incident command operations. Penalties: Any person who violates the above rules and/or restriction may be tried before a United States Magistrate and fined no more than \$1,000, imprisoned for no more than 12 months, or both. Such violations may also be subject to the enhanced fines provided for by 18 U.S.C. 3571.

For more information:

BLM Colorado River Valley Field Office, (970)-876-9000



Elizebeth A. Dawson
Field Manager



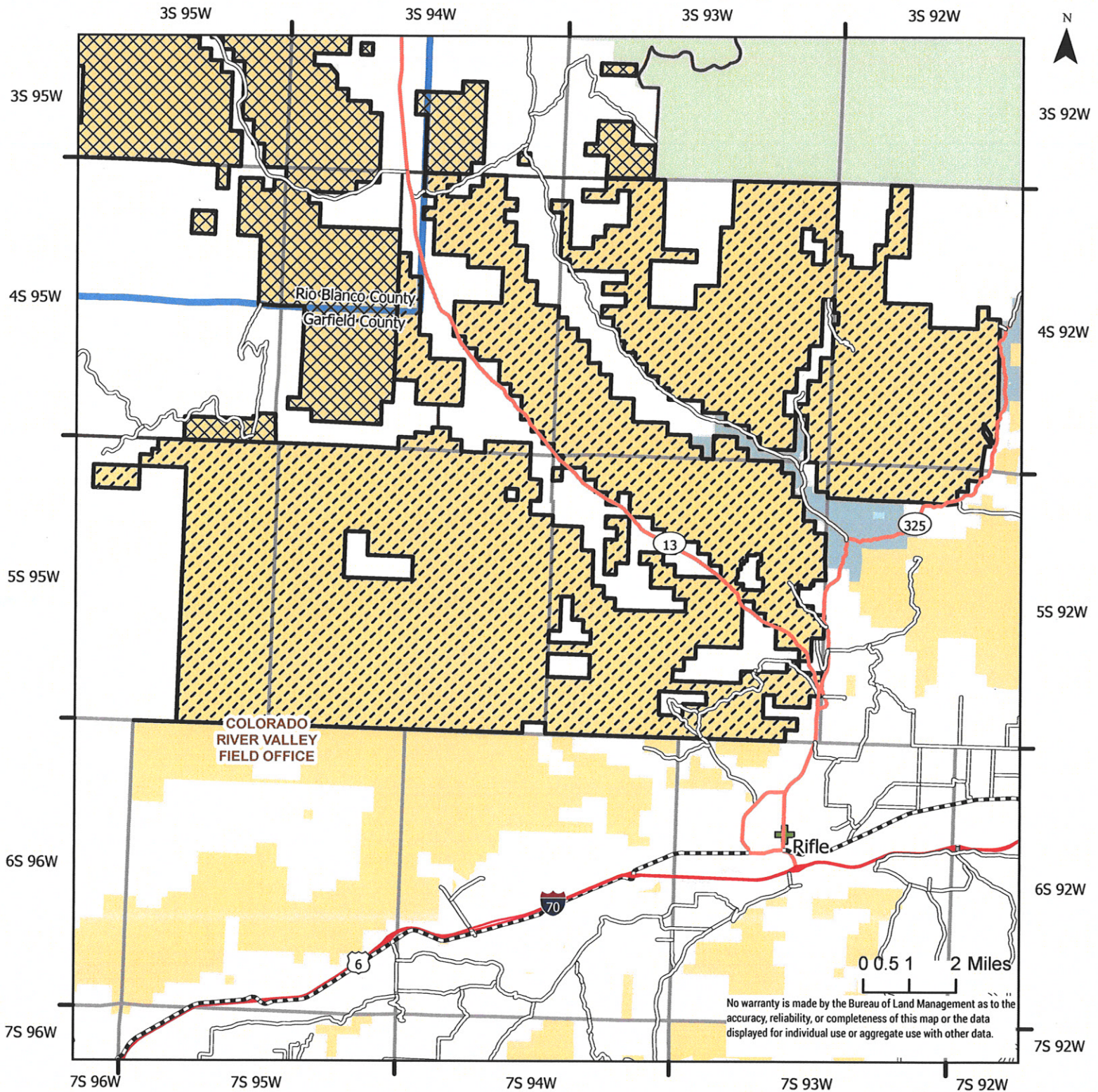
Colorado River Valley BLM Field Office Emergency Closure Areas

#COG02000-25-01

Bureau of Land Management
Colorado River Valley Field Office
2300 River Frontage Road
Silt, CO 81652

Colorado

8/11/2025



No warranty is made by the Bureau of Land Management as to the accuracy, reliability, or completeness of this map or the data displayed for individual use or aggregate use with other data.

- EM_Closure_Area_8_10_25_CRV_BLMlands
- EM_Closure_Area_8_10_25_WRFO_BLMlands
- CO City Point Locations
- BLM Field Office Area Boundaries
- County Boundaries
- Township & Range

- Non-BLM Routes**
- County Roads
 - Interstate
 - State Highway
 - US Highway

Surface Management Agency - Land Manager (No Outline)

- Bureau of Land Management
- State, County, City: Areas
- Private
- State
- US Forest Service